

# FOR LEASE

## PROSPECT SEVENTEEN PLAZA

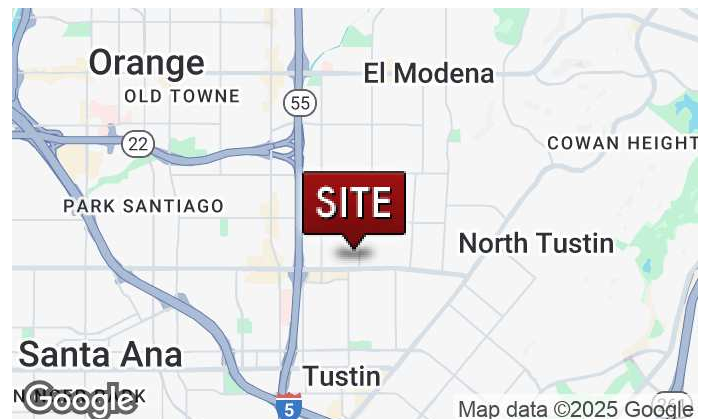
17821 E 17TH STREET | TUSTIN, CA

PROFESSIONAL OFFICE SPACE



### PROPERTY HIGHLIGHTS

- ~43,352 SF Two- Story Office Building with Premium Offices and a Beautiful Courtyard
- Convenient Access to the 55 and 5 freeways
- Minutes from Numerous Amenities including Restaurants, Banking, and Shopping
- Functional Office Layouts
- Ample Free Surface Parking
- Elevator served
- Located near the Corner of 17th Street and Prospect Avenue
- Shared (Free) conference room available
- Fiber Optic Capabilities by AT&T



CLICK FOR WEBSITE

#### MARSHAL VOGT

President  
714.564.7117  
mvogt@lee-associates.com  
CalDRE #01519213

#### JAIMESON HEARNE

Principal  
714.564.7146  
jhearne@lee-associates.com  
CalDRE #01925107



COMMERCIAL REAL ESTATE SERVICES

DRE # 01011260

1004 West Taft Avenue, Suite 150

Orange, CA 92865

<https://www.lee-associates.com/orange/>

All information contained herein has been provided by Lessor and/or third parties, but has not been independently verified by Lee & Associates or its agent(s). Lessee and interested parties should independently verify all information communicated by these sources.

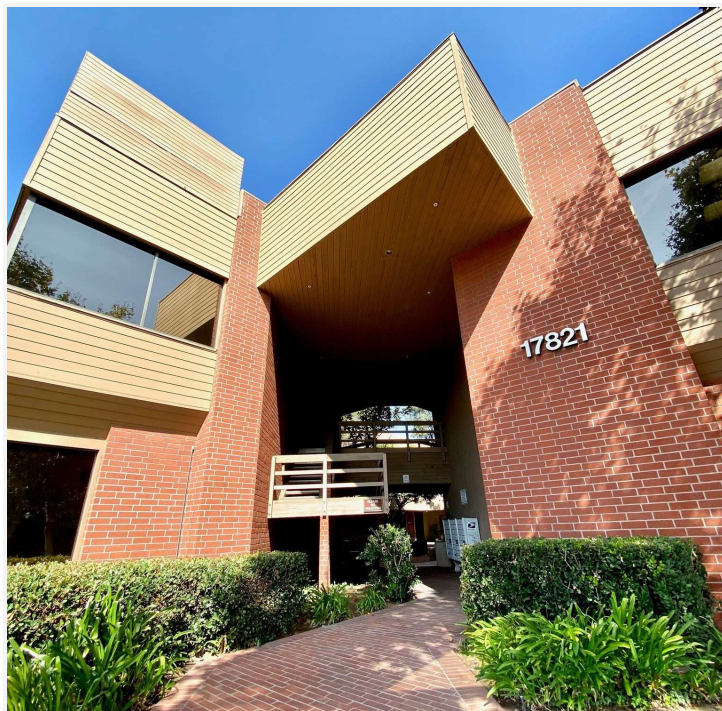


# PROSPECT SEVENTEEN PLAZA

17821 E 17TH STREET | TUSTIN, CA

# FOR LEASE

PROFESSIONAL OFFICE SPACE



CLICK FOR WEBSITE

## MARSHAL VOGT

President

714.564.7117

[mvogt@lee-associates.com](mailto:mvogt@lee-associates.com)

CalDRE #01519213

## JAIMESON HEARNE

Principal

714.564.7146

[jhearne@lee-associates.com](mailto:jhearne@lee-associates.com)

CalDRE #01925107



LEE &  
ASSOCIATES

COMMERCIAL REAL ESTATE SERVICES

DRE # 01011260

1004 West Taft Avenue, Suite 150

Orange, CA 92865

<https://www.lee-associates.com/orange/>

All information contained herein has been provided by Lessor and/or third parties, but has not been independently verified by Lee & Associates or its agent(s). Lessee and interested parties should independently verify all information communicated by these sources.

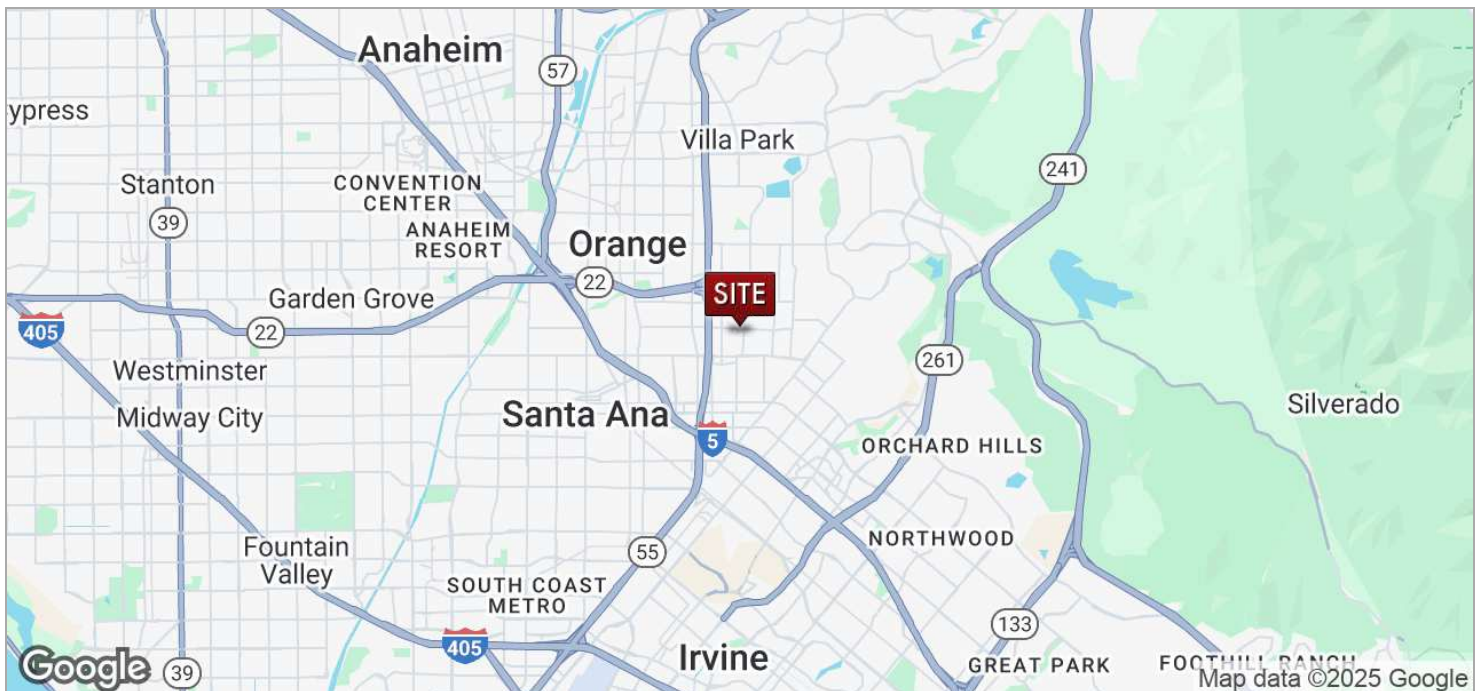


**FOR  
LEASE**

## PROSPECT SEVENTEEN PLAZA

17821 E 17TH STREET | TUSTIN, CA

PROFESSIONAL OFFICE SPACE



[CLICK FOR WEBSITE](#)

**MARSHAL VOGT**

President  
714.564.7117  
mvogt@lee-associates.com  
CalDRE #01519213

**JAIMESON HEARNE**

Principal  
714.564.7146  
jhearne@lee-associates.com  
CalDRE #01925107



COMMERCIAL REAL ESTATE SERVICES  
DRE # 01011260  
1004 West Taft Avenue, Suite 150  
Orange, CA 92865  
<https://www.lee-associates.com/orange/>

All information contained herein has been provided by Lessor and/or third parties, but has not been independently verified by Lee & Associates or its agent(s). Lessee and interested parties should independently verify all information communicated by these sources.

# FOR LEASE

## PROSPECT SEVENTEEN PLAZA

17821 E 17TH STREET, TUSTIN, CA

PROFESSIONAL OFFICE SPACE

<b>Lease Rate:</b>	\$2.25 SF/MONTH (FSG)	<b>Total Space</b>	622 - 2,739 SF
<b>Lease Type:</b>	FSG	<b>Lease Term:</b>	Negotiable

SPACE	SPACE USE	LEASE RATE	LEASE TYPE	SIZE (SF)
Suite 200	Office	\$2.25 SF/MONTH	FSG	2,739 SF
Suite 280	Office	\$2.25 SF/MONTH	FSG	622 SF
Suite 275	Office	\$2.25 SF/MONTH	FSG	741 SF

CLICK FOR WEBSITE

<b>MARSHAL VOGT</b> President 714.564.7117 mvogt@lee-associates.com CalDRE #01519213	<b>JAIMESON HEARNE</b> Principal 714.564.7146 jhearne@lee-associates.com CalDRE #01925107
--	---

**LEE &  
ASSOCIATES**

COMMERCIAL REAL ESTATE SERVICES  
DRE # 01011260  
1004 West Taft Avenue, Suite 150  
Orange, CA 92865  
<https://www.lee-associates.com/orange/>

All information contained herein has been provided by Lessor and/or third parties, but has not been independently verified by Lee & Associates or its agent(s). Lessee and interested parties should independently verify all information communicated by these sources.

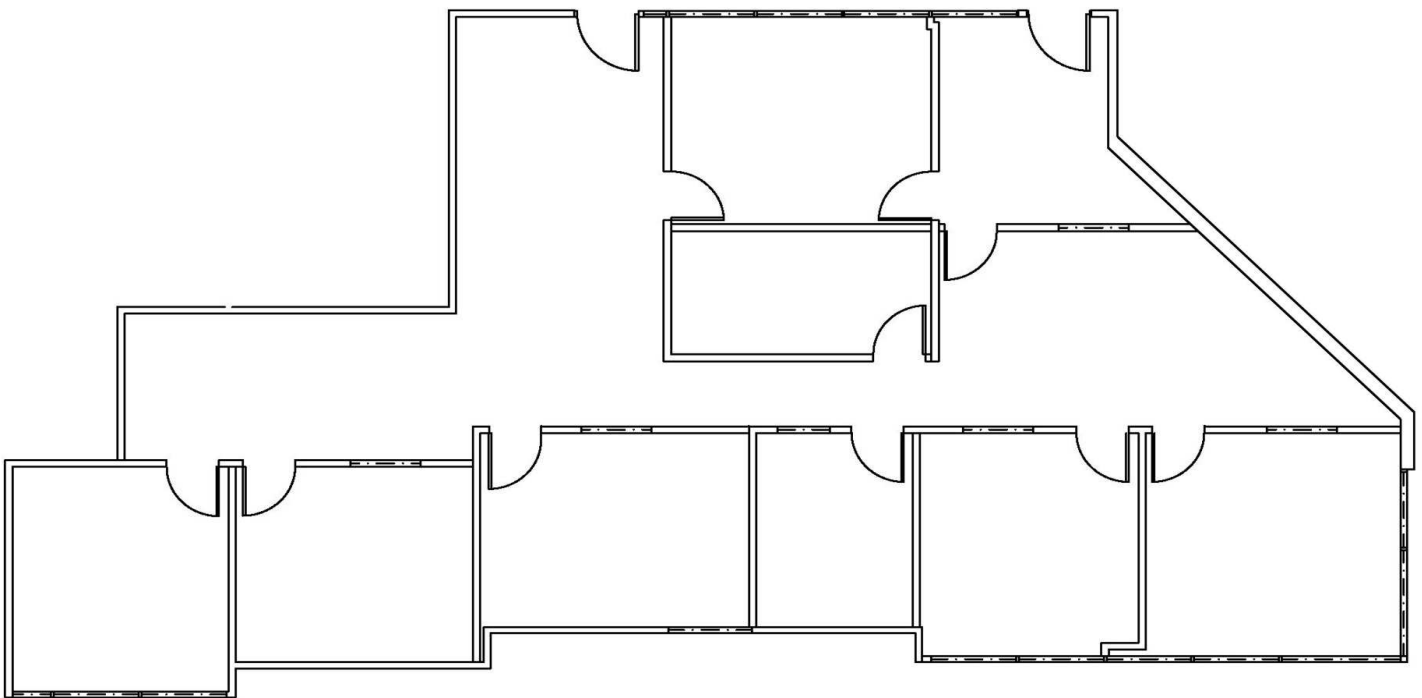
**FOR  
LEASE**

## PROSPECT SEVENTEEN PLAZA

17821 E 17TH STREET | TUSTIN, CA

PROFESSIONAL OFFICE SPACE

**PROSPECT SEVENTEEN PLAZA**  
17821 E. 17th Street, Tustin, CA 92780  
**Suite 200 - 2,739 SF**



[CLICK FOR WEBSITE](#)

**MARSHAL VOGT**

President  
714.564.7117  
mvogt@lee-associates.com  
CalDRE #01519213

**JAIMESON HEARNE**

Principal  
714.564.7146  
jhearne@lee-associates.com  
CalDRE #01925107



COMMERCIAL REAL ESTATE SERVICES

DRE # 01011260

1004 West Taft Avenue, Suite 150

Orange, CA 92865

<https://www.lee-associates.com/orange/>

All information contained herein has been provided by Lessor and/or third parties, but has not been independently verified by Lee & Associates or its agent(s). Lessee and interested parties should independently verify all information communicated by these sources.

**FOR  
LEASE**

## PROSPECT SEVENTEEN PLAZA

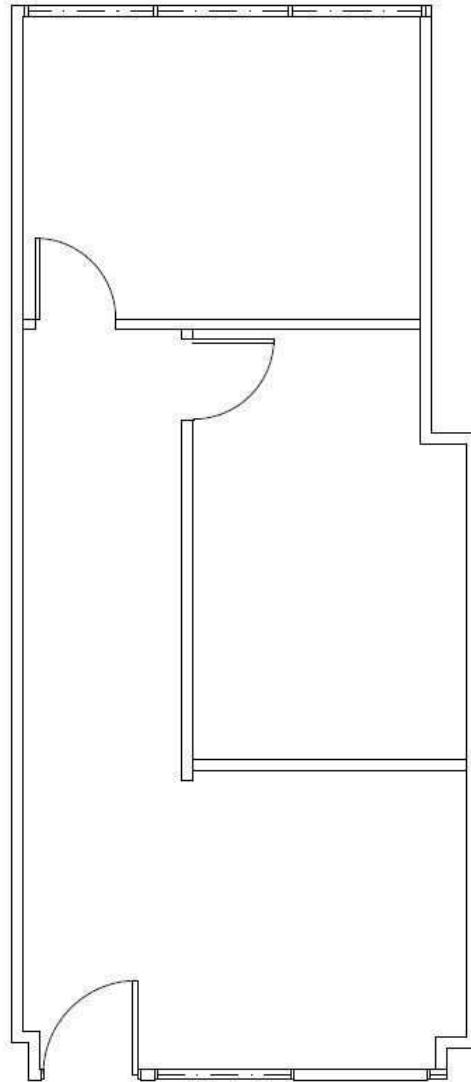
17821 E 17TH STREET | TUSTIN, CA

PROFESSIONAL OFFICE SPACE

### PROSPECT SEVENTEEN PLAZA

17821 E. 17th Street, Tustin, CA 92780

**Suite 275 - 741 SF**



[CLICK FOR WEBSITE](#)

#### MARSHAL VOGT

President

714.564.7117

[mvogt@lee-associates.com](mailto:mvogt@lee-associates.com)

CalDRE #01519213

#### JAIMESON HEARNE

Principal

714.564.7146

[jhearne@lee-associates.com](mailto:jhearne@lee-associates.com)

CalDRE #01925107



COMMERCIAL REAL ESTATE SERVICES

DRE # 01011260

1004 West Taft Avenue, Suite 150

Orange, CA 92865

<https://www.lee-associates.com/orange/>

All information contained herein has been provided by Lessor and/or third parties, but has not been independently verified by Lee & Associates or its agent(s). Lessee and interested parties should independently verify all information communicated by these sources.

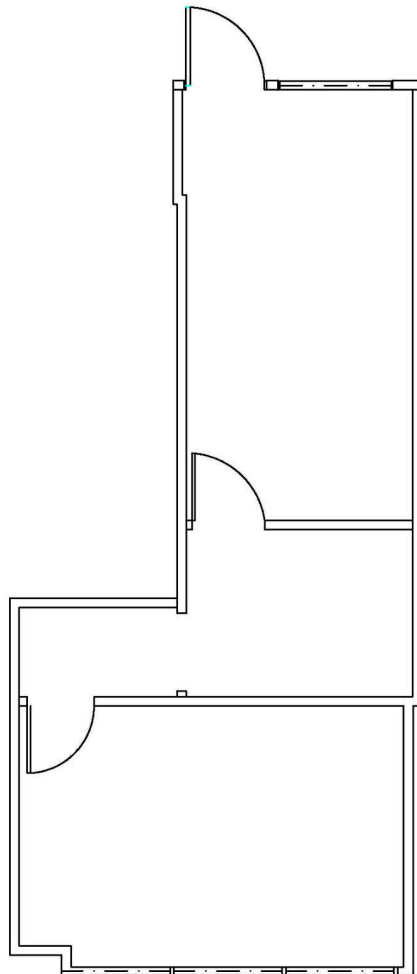
**FOR  
LEASE**

## PROSPECT SEVENTEEN PLAZA

17821 E 17TH STREET | TUSTIN, CA

PROFESSIONAL OFFICE SPACE

**PROSPECT SEVENTEEN PLAZA**  
17821 E. 17th Street, Tustin, CA 92780  
**Suite 280 - 622 SF**



[CLICK FOR WEBSITE](#)

**MARSHAL VOGT**

President  
714.564.7117

[mvogt@lee-associates.com](mailto:mvogt@lee-associates.com)  
CalDRE #01519213

**JAIMESON HEARNE**

Principal  
714.564.7146

[jhearne@lee-associates.com](mailto:jhearne@lee-associates.com)  
CalDRE #01925107



COMMERCIAL REAL ESTATE SERVICES

DRE # 01011260

1004 West Taft Avenue, Suite 150

Orange, CA 92865

<https://www.lee-associates.com/orange/>

All information contained herein has been provided by Lessor and/or third parties, but has not been independently verified by Lee & Associates or its agent(s). Lessee and interested parties should independently verify all information communicated by these sources.