

FOR LEASE



**MCFADDEN**  
PLAZA

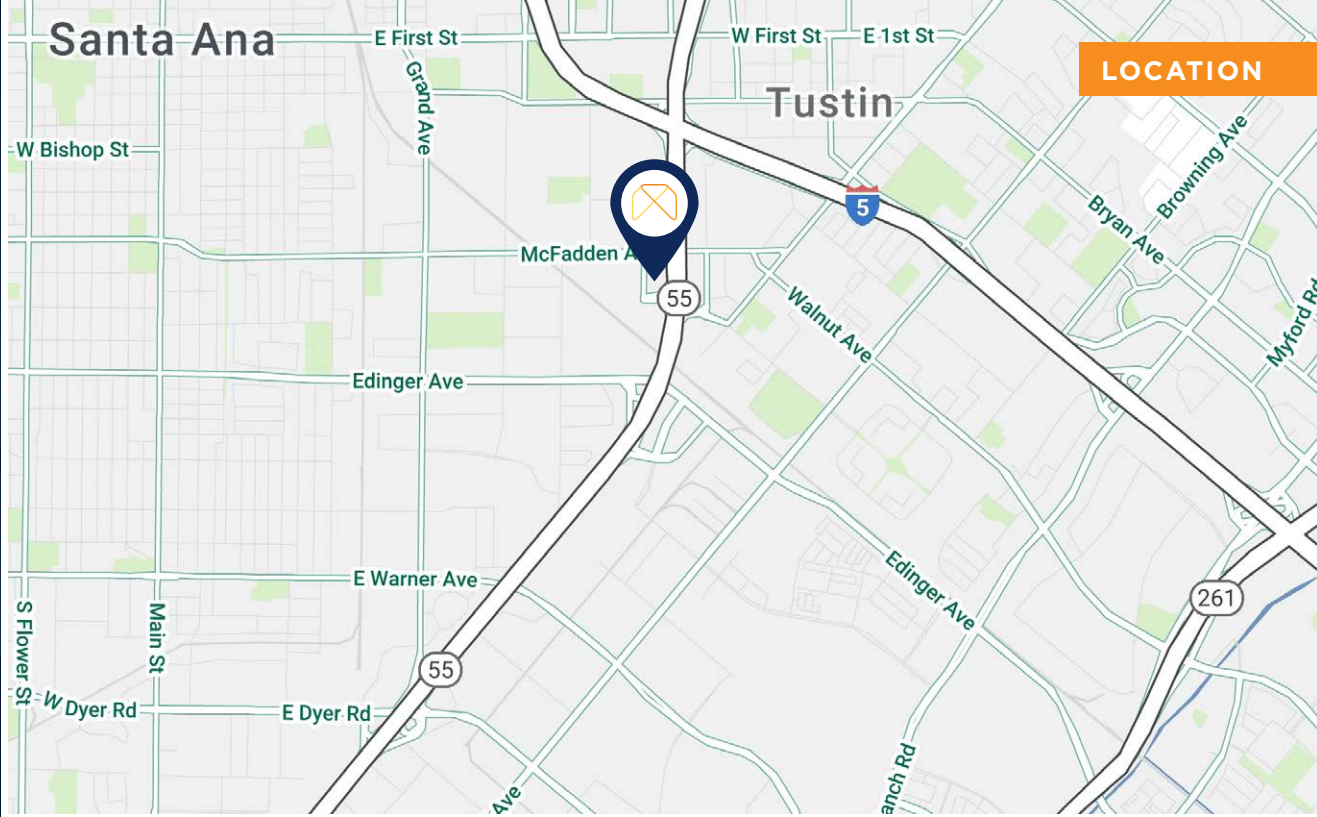


2000 E. McFadden Street | Santa Ana, CA 92705

**CBRE**

# BUILDING FEATURES

- + 2000 E McFadden - 30,040 SF Free Standing Building  
2nd FLOOR - 15,020 RSF Available  
(Divisible to 1,705 RSF)
- + 2002 E McFadden  
1st FLOOR - 4,448 RSF Available
- + Campus Environment
- + 4:1,000 parking and free gated parking
- + On-Site Property Management
- + Direct Access to 55 Freeway
- + Call to Show
- + Strategically located near John Wayne Airport with immediate access to the 5 and 55 freeways
- + Free and in-common parking, plus Tenant would also have access to 51 secured and gated parking stalls at no charge
- + Impressive food options just minutes away as well as affordable housing and apartments for employees





# FLOOR PLANS - 2000 E McFadden

Suite 200 6,990 RSF

Suite 210 1,745 RSF

Suite 220 2,270 RSF

Suite 230 2,310 RSF

Suite 240 2,310 RSF

4,015 RSF

Second Floor  
15,020 RSF

4,015 RSF

Second Floor

Suite 200  
6,990 SF

15,020 SF  
TOTAL FLOOR

Suite 210  
1,745 SF

Suite 220  
2,270 SF

Suite 230  
2,310 SF

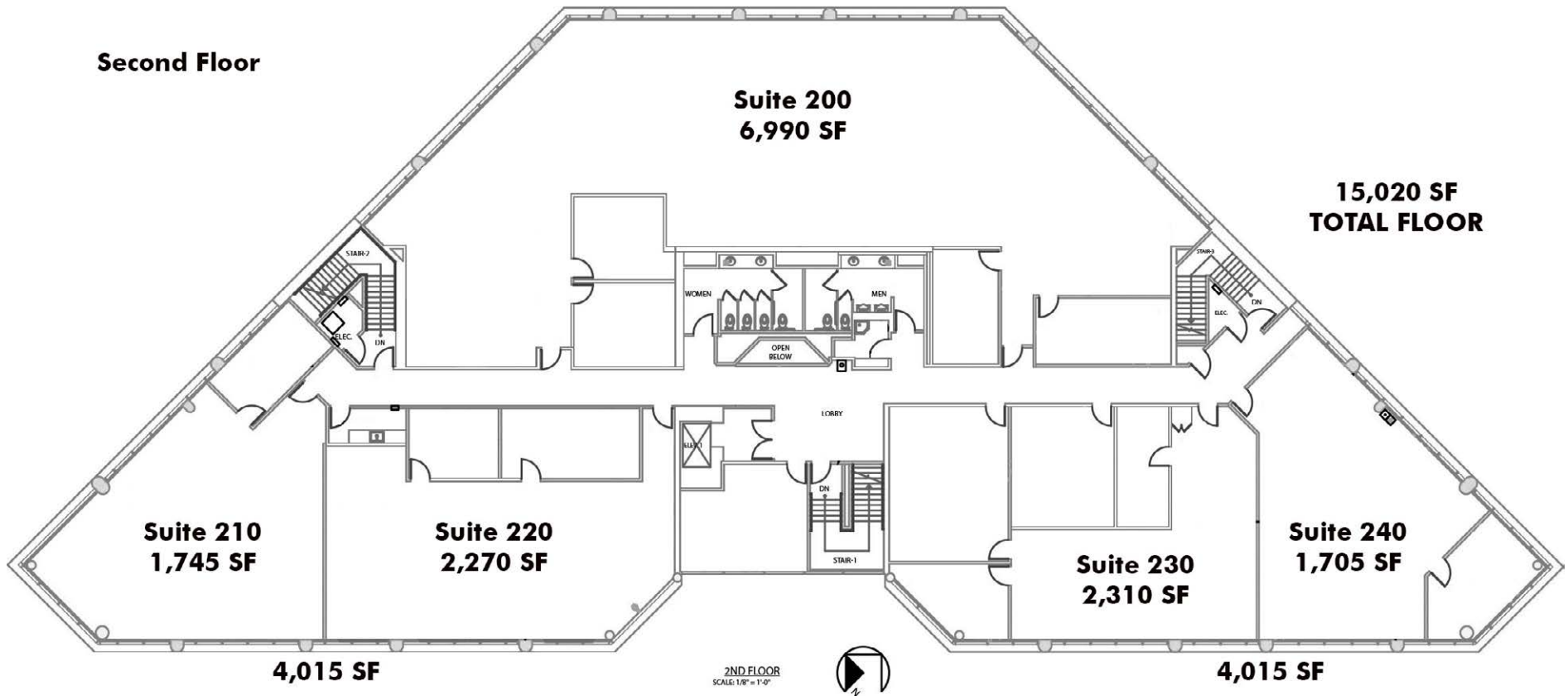
Suite 240  
1,705 SF

4,015 SF

2ND FLOOR  
SCALE: 1/8" = 1'-0"

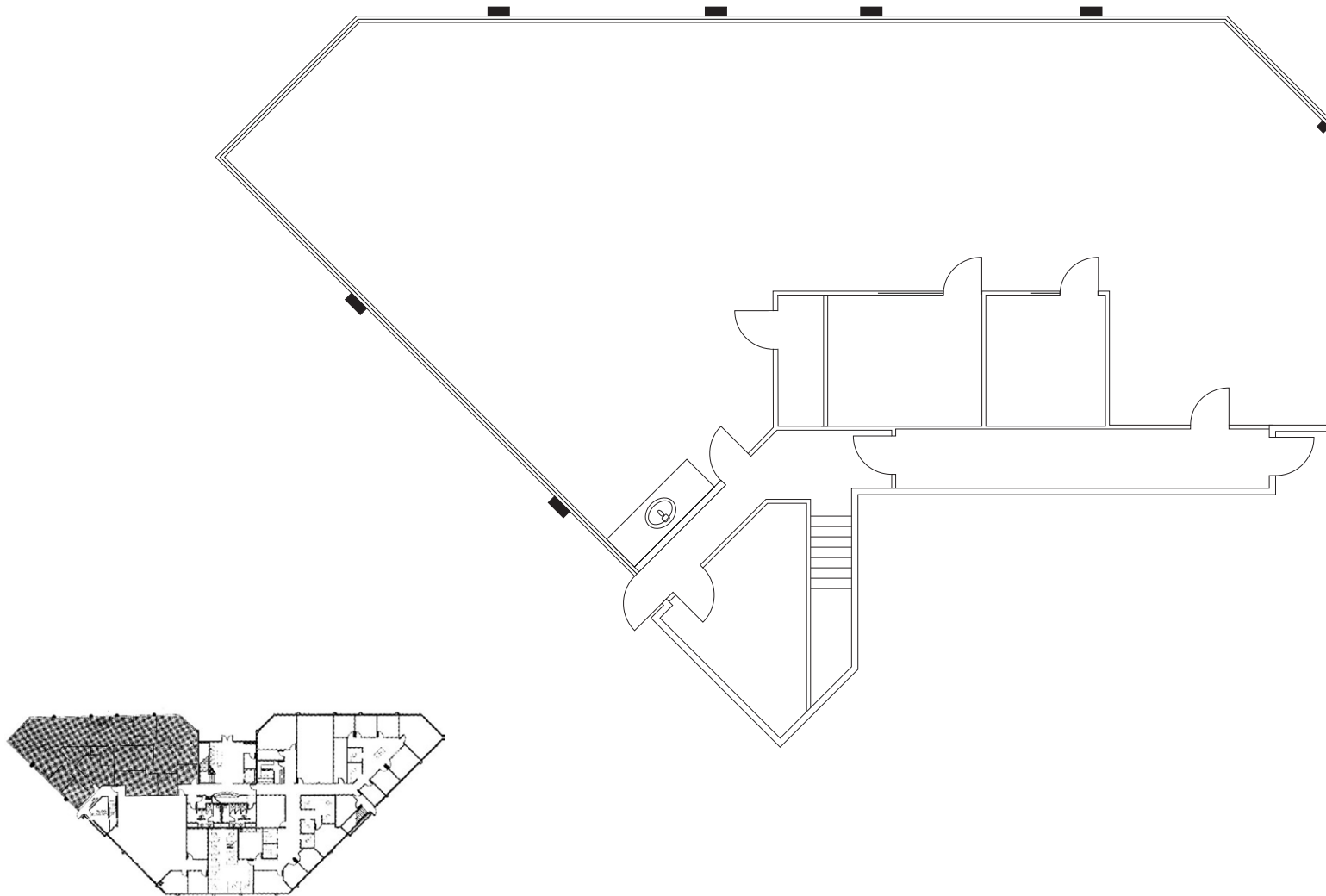


4,015 SF



# FLOOR PLANS - 2002 E McFadden

Suite 100 4,448 RSF



FOR LEASE



# MCFADDEN

P L A Z A

2000 & 2002 E. McFadden Street  
Santa Ana, CA 92705

**SIMON DILLON**

Lic. 01010564  
+1 949 725 8668  
simon.dillon@cbre.com

**REID WEAVER**

Lic. 01995422  
+1 949 725 8688  
reid.weaver@cbre.com

## CBRE

© 2023 CBRE, Inc. All rights reserved. This information has been obtained from sources believed reliable, but has not been verified for accuracy or completeness. You should conduct a careful, independent investigation of the property and verify all information. Any reliance on this information is solely at your own risk. CBRE and the CBRE logo are service marks of CBRE, Inc. All other marks displayed on this document are the property of their respective owners. Photos herein are the property of their respective owners. Use of these images without the express written consent of the owner is prohibited.