

CHINO CORPORATE CENTER



14726 RAMONA AVE, CHINO, CA 91710



LEE & ASSOCIATES

COMMERCIAL REAL ESTATE SERVICES

OFFICE SPACE FOR LEASE

CHINO CORPORATE CENTER AVAILABLE SUITES					
TOTAL SQUARE FEET ±58,573 RENTABLE SQUARE FEET					
Suite	Sq. Ft.	Lease Rate	Description	Video	Floor Plan
108	4,221 SF	\$2.35 PSF	Reception, 8 Private Offices, 2 Conference Rooms, Workstations, Kitchenette, Storage Closet, Bullpen, Available 30 Days Notice		

LEASE TYPE Full Service Gross
 RENT ADJUSTMENTS Three percent (3%) per year
 LEASE TERM One (1) to Five (5) years

PROPERTY HIGHLIGHTS

- » ±58,573 SF four-story high image, professional building for Class "A" Office Environment
- » Approved For Medical Use, with 5:1000 parking (Covered 95 - Surface 75)
- » Convenient access to the CA-142, 71 and 60 freeways.
- » Breathtaking outdoor space and executive suite service redefining the modern workplace.
- » State of the art building and amenities to attract the best companies and professionals in the area.
- » LEED Certified



COMMERCIAL REAL ESTATE SERVICES

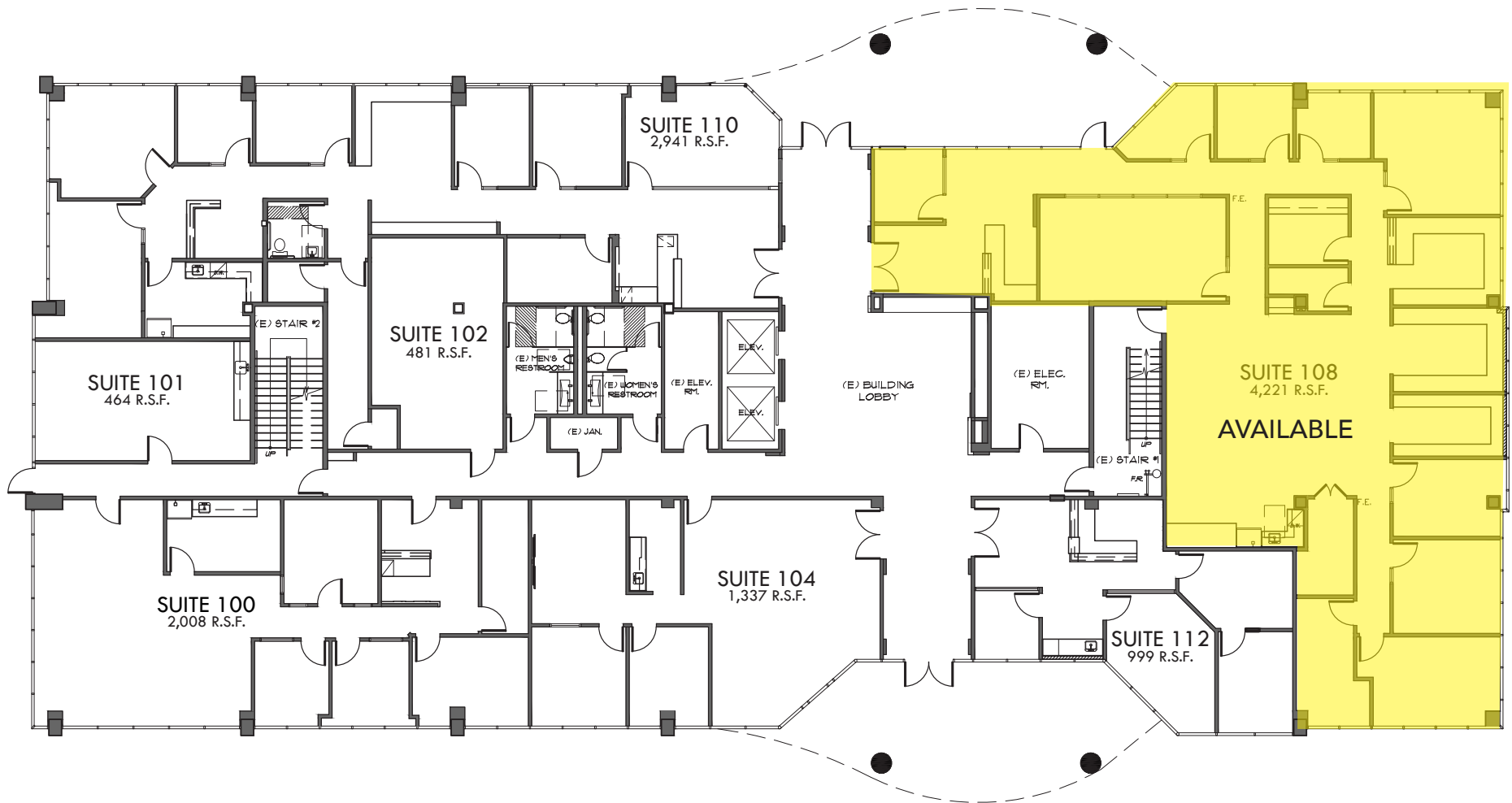
Andrew Peake, 951.276.3644, apeake@lee-associates.com, DRE #01398894
Joseph Pierik, 951.276.3685, jpierik@lee-associates.com, DRE #02144961
Mason Wilson, Associate, 951.276.3603, mwilson@lee-associates.com, DRE 02163918

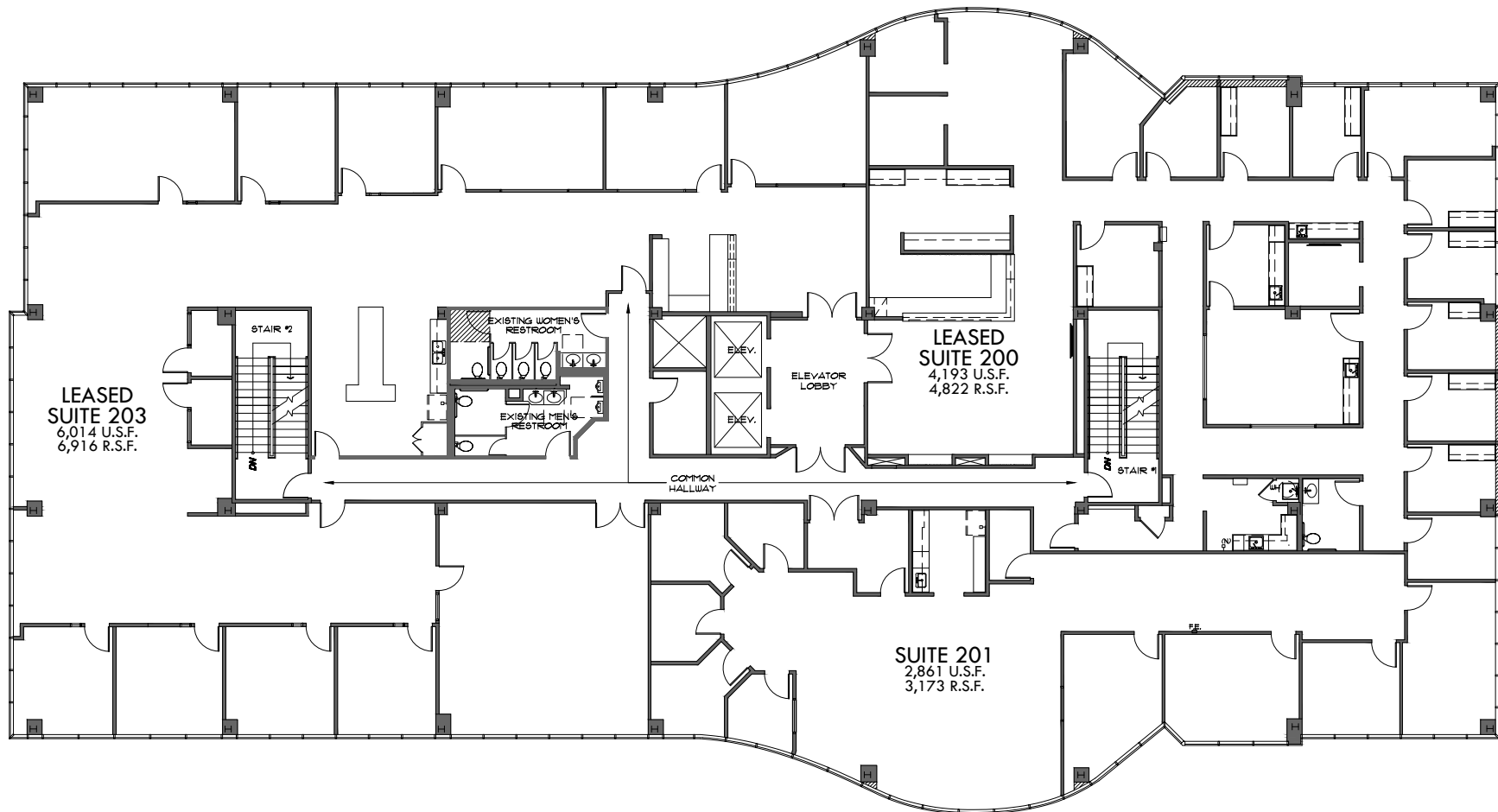


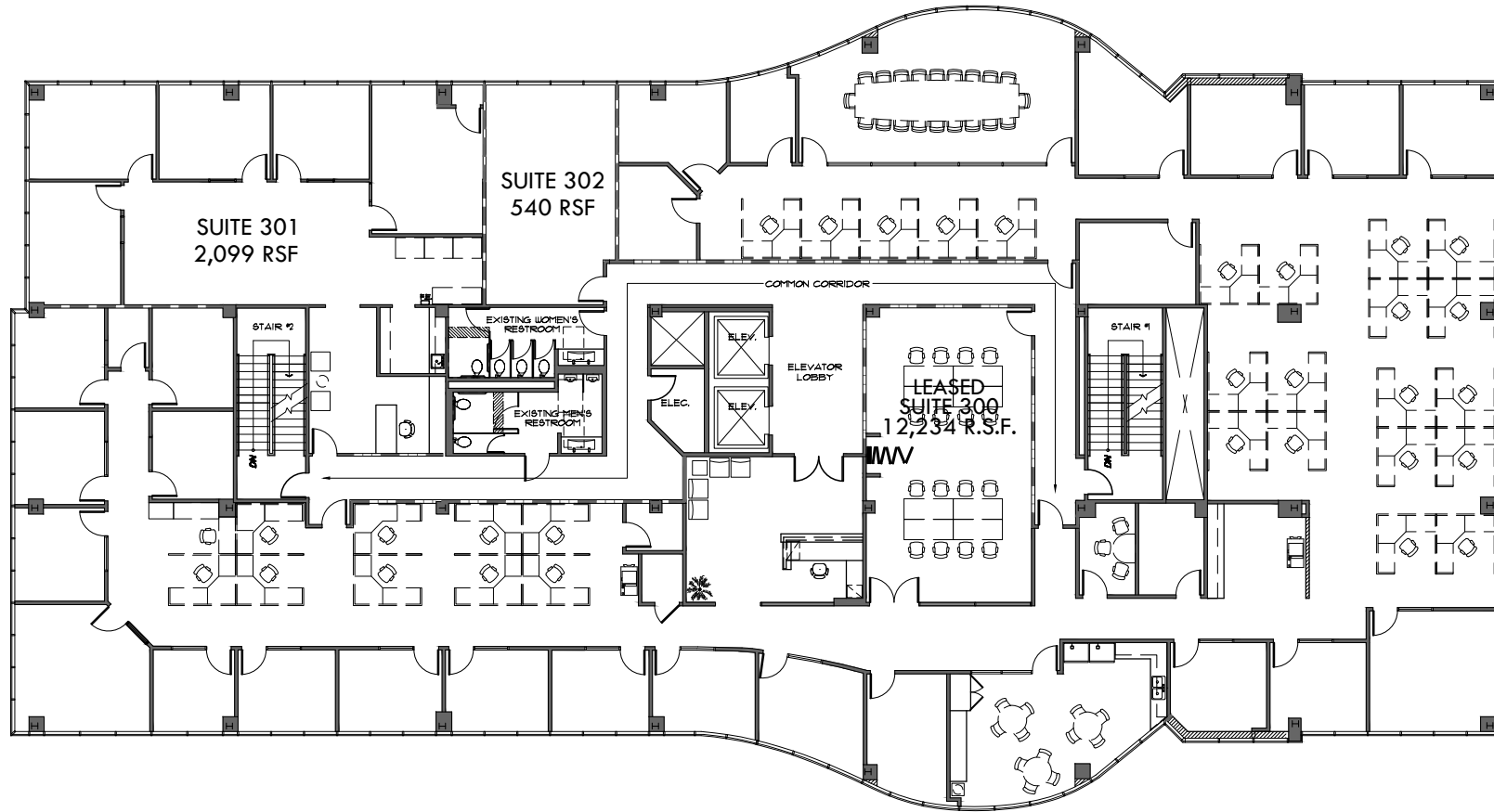
Chino is one of California's fastest growing cities. We are a business friendly community with unified community vision that values business growth, inclusion, safety and innovation. This vision is a part of a larger partnership with Chino residents, businesses, and community and economic development partners.

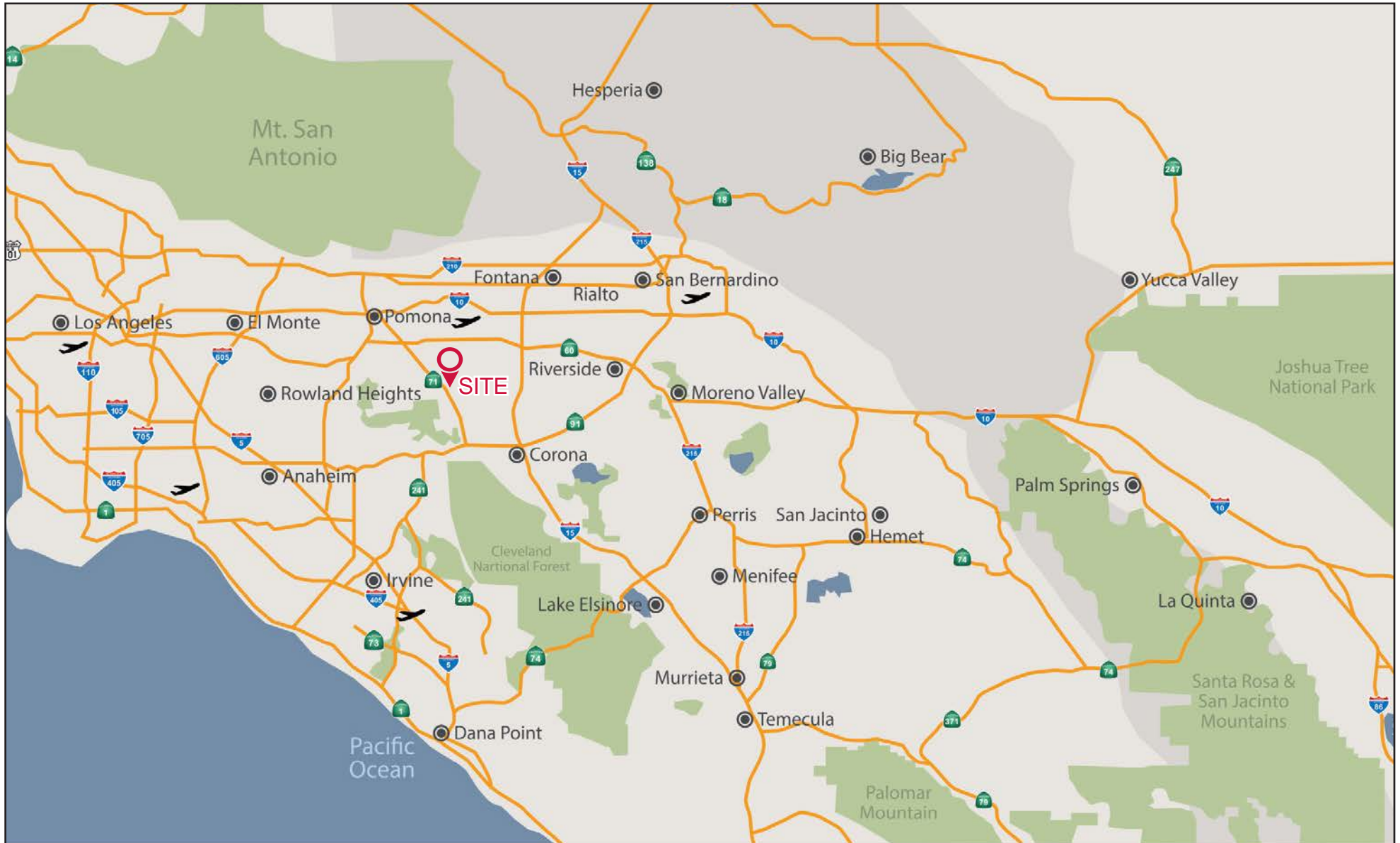












Andrew Peake, Senior Vice President, 951.276.3644, apeake@lee-associates.com, DRE 01398894

Joseph Pierik, Vice President, 951.276.3685, jpierik@lee-associates.com, DRE 02144961

Mason Wilson, Associate, 951.276.3603, mwilson@lee-associates.com, DRE 02163918

All information furnished regarding property for sale, rental or financing is from sources deemed reliable, but no warranty or representation is made to the accuracy thereof and same is submitted to errors, omissions, change of price, rental or other conditions prior to sale, lease or financing or withdrawal without notice. No liability of any kind is to be imposed on the broker herein. Corporate DRE 01048055

14726 RAMONA AVE
CHINO, CA 91710

AERIAL MAP



Andrew Peake, Senior Vice President, 951.276.3644, apeake@lee-associates.com, DRE 01398894

Joseph Pierik, Vice President, 951.276.3685, jpierik@lee-associates.com, DRE 02144961

Mason Wilson, Associate, 951.276.3603, mwilson@lee-associates.com, DRE 02163918

 **LEE &
ASSOCIATES**

COMMERCIAL REAL ESTATE SERVICES

All information furnished regarding property for sale, rental or financing is from sources deemed reliable, but no warranty or representation is made to the accuracy thereof and same is submitted to errors, omissions, change of price, rental or other conditions prior to sale, lease or financing or withdrawal without notice. No liability of any kind is to be imposed on the broker herein. Corporate DRE 01048055