



Rio Hondo Industrial Park

6635 EAST FLORENCE AVENUE, BELL GARDENS, CA 90201

FOR LEASE



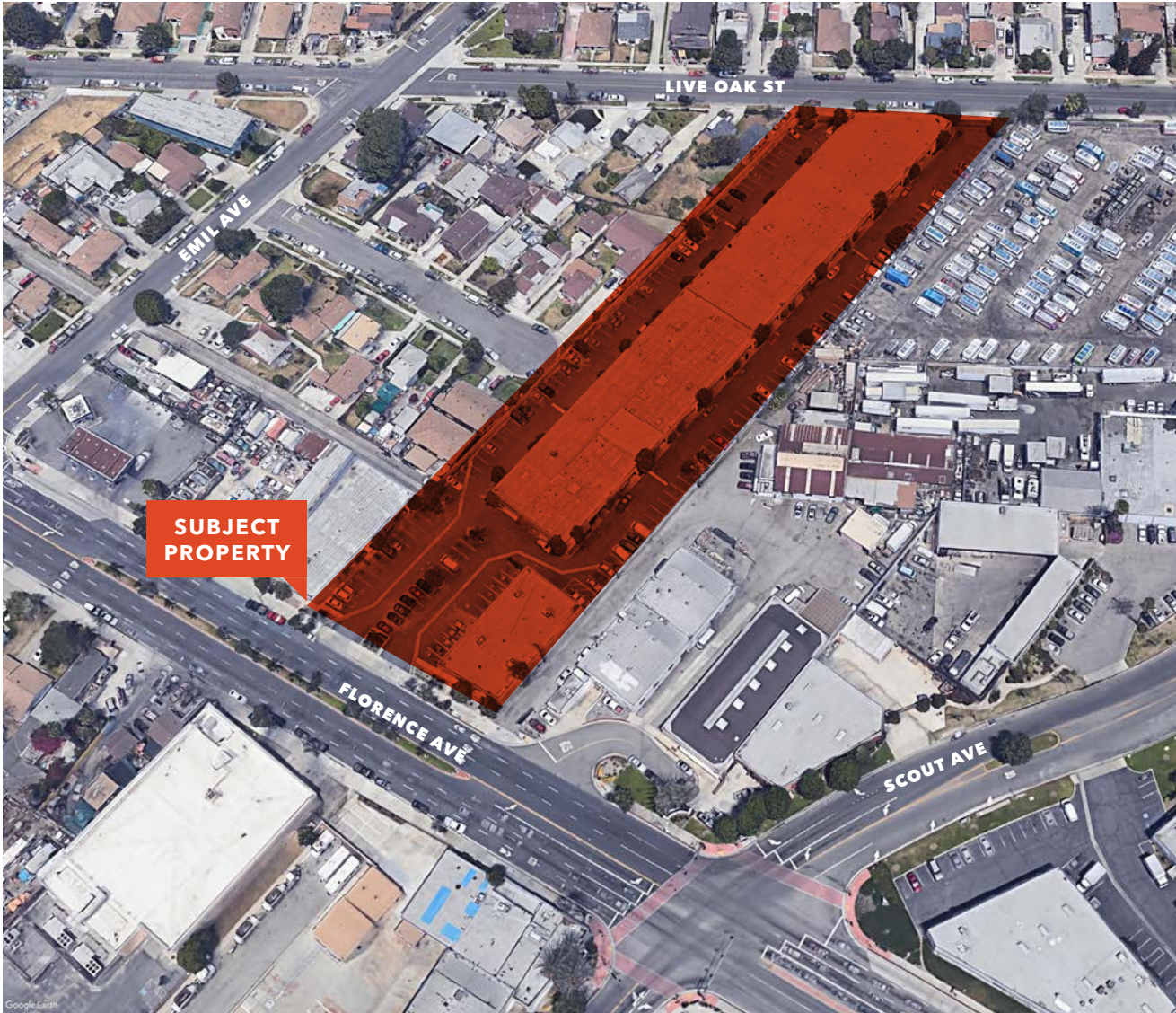
Professionally
maintained
business park
with small
industrial units

THOMAS A. HOLLAND, CCIM, CPM, SIOR
EVP, Shareholder
323.270.8456
tom.holland@kidder.com
LIC N° 0186709

FOR LEASE

Rio Hondo Industrial Park

6635 EAST FLORENCE AVENUE, BELL GARDENS, CA 90201



Property Highlights

±840 SF-1,500 SF available

\$1.00 PSF gross

COMMON AREA fees are \$0.12 PSF/month

EACH UNIT includes a small office and private restroom with ample car parking

14' clear height

ONE (1) ground level door (10'x12')

100 AMPS 208 volts, 3 phase, 4 wire

M1 zoning

THOMAS A. HOLLAND, CCIM, CPM, SIOR

EVP, Shareholder

323.270.8456

tom.holland@kidder.com

LIC N° 0186709

KIDDER.COM

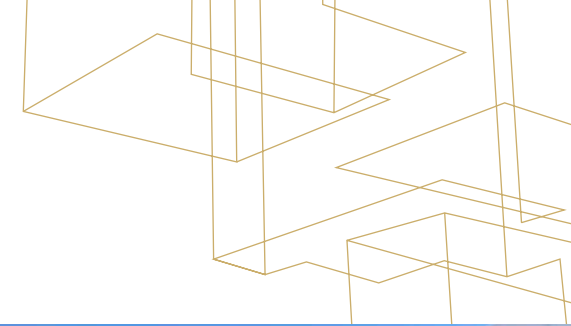
This information supplied herein is from sources we deem reliable. It is provided without any representation, warranty, or guarantee, expressed or implied as to its accuracy. Prospective Buyer or Tenant should conduct an independent investigation and verification of all matters deemed to be material, including, but not limited to, statements of income and expenses. Consult your attorney, accountant, or other professional advisor.



FOR LEASE

Rio Hondo Industrial Park

6635 EAST FLORENCE AVENUE, BELL GARDENS, CA 90201



THOMAS A. HOLLAND, CCIM, CPM, SIOR
EVP, Shareholder
323.270.8456
tom.holland@kidder.com
LIC N° 0186709

KIDDER.COM

This information supplied herein is from sources we deem reliable. It is provided without any representation, warranty, or guarantee, expressed or implied as to its accuracy. Prospective Buyer or Tenant should conduct an independent investigation and verification of all matters deemed to be material, including, but not limited to, statements of income and expenses. Consult your attorney, accountant, or other professional advisor.

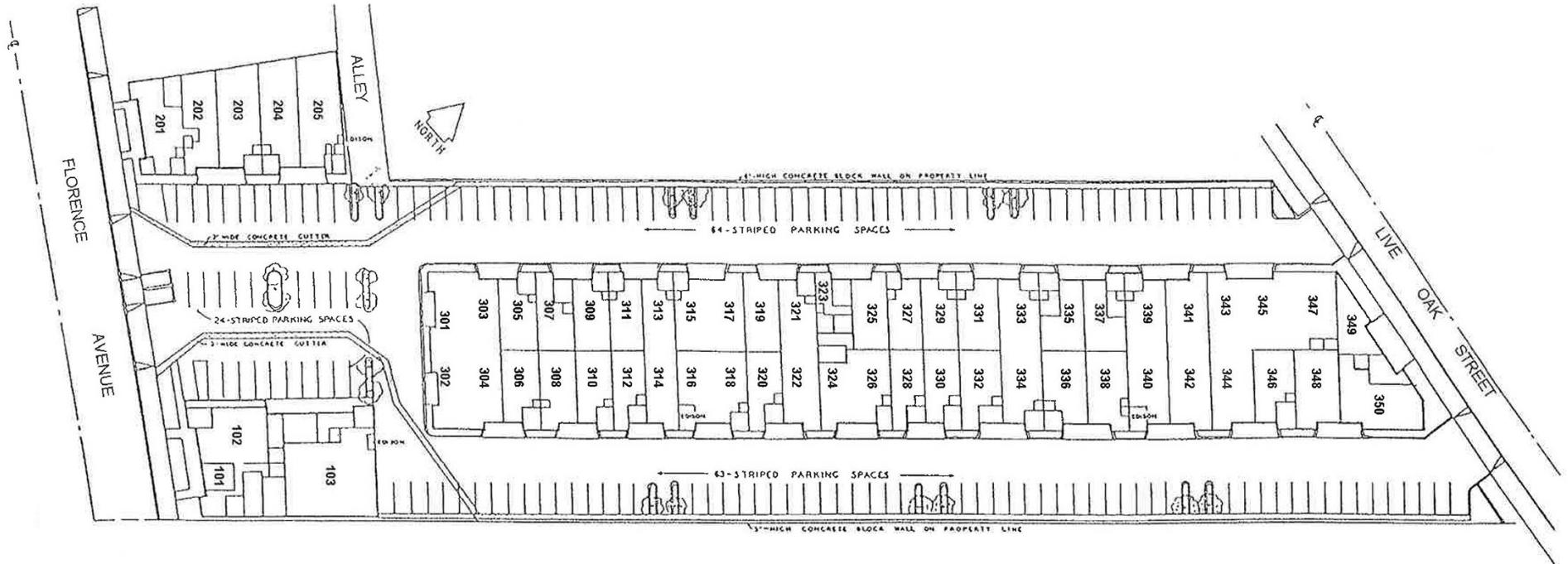


FOR LEASE

Rio Hondo Industrial Park

6635 EAST FLORENCE AVENUE, BELL GARDENS, CA 90201

Site Plan



AVAILABLE SUITES

Suite	SF	Rate (PSF)	CAM/MO.
319	840	\$1.00	\$95.00
TBD	1,680	\$1.00	\$190.00
201 & 202	2,500	\$1.00	\$300.00

KIDDER.COM

This information supplied herein is from sources we deem reliable. It is provided without any representation, warranty, or guarantee, expressed or implied as to its accuracy. Prospective Buyer or Tenant should conduct an independent investigation and verification of all matters deemed to be material, including, but not limited to, statements of income and expenses. Consult your attorney, accountant, or other professional advisor.

