

# FOR LEASE | ± 1,500 - 4,500 SF

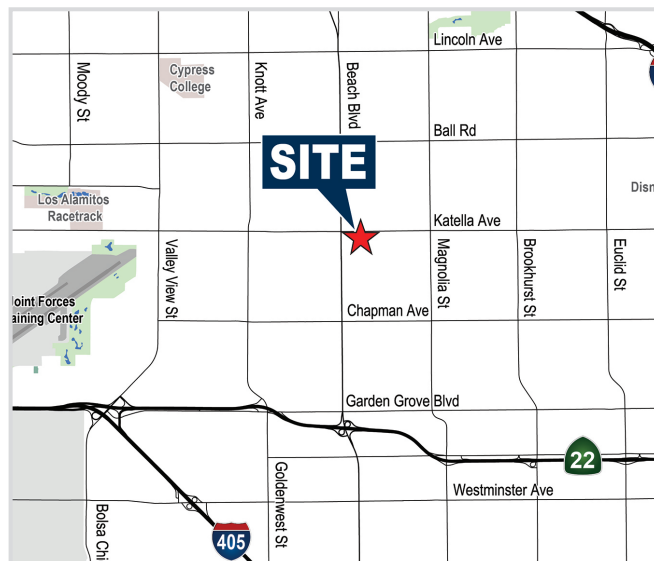
## High-Image Multi-Tenant Buildings

8200-8220 Katella Avenue, Stanton, CA



### PROPERTY FEATURES

- High Image Multi-Tenant Buildings
- Mix of Industrial, Office, and Retail Units
- On-Site Property Management & Security
- Spectrum High Speed Internet
- Excellent Access to the 22 & Beach Blvd.
- High Identity Location in Excellent Stanton Area (Beach Blvd., Katella Ave., are closest cross streets)
- Retail and Industrial Units Have Ground Level Roll-Up Doors & Private Restrooms
- BP Zoning (*Verify*)



**ERIC SMITH, SIOR**  
Senior Vice President  
714.935.2310  
esmith@voitco.com  
Lic. #01940591  
www.ericrandolphsmith.com



**DYLAN SHERSHENOVICH**  
Associate  
714.935.2312  
dshershenovich@voitco.com  
Lic. #02151453

**Voit**  
REAL ESTATE SERVICES

FOR LEASE | ± 1,500 - 4,500 SF

High-Image Multi-Tenant Buildings

8200-8220 Katella Avenue, Stanton, CA



**ERIC SMITH, SIOR**  
Senior Vice President  
714.935.2310  
esmith@voitco.com  
Lic. #01940591  
www.ericrandolphsmith.com



**DYLAN SHERSHENOVICH**  
Associate  
714.935.2312  
dshershenovich@voitco.com  
Lic. #02151453

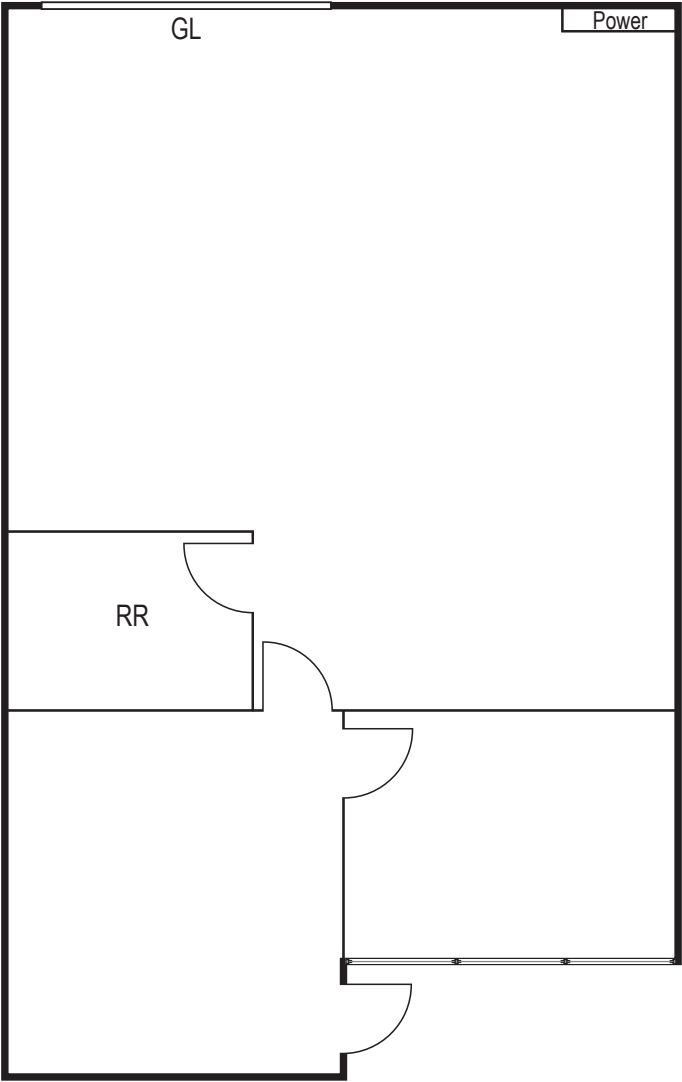
**Voit**  
REAL ESTATE SERVICES

FOR LEASE | ± 1,500 - 4,500 SF

High-Image Multi-Tenant Buildings

8200-8220 Katella Avenue, Stanton, CA

Suite D



INDUSTRIAL: 8210 KATELLA AVENUE					
Suite	Size SF	Office SF	Asking Rate/ SF	Availability	Comments
D	±1,500	TBD	\$1.65 PSF	August 1, 2025	Private restroom. 1 Ground level loading door.



**ERIC SMITH, SIOR**  
Senior Vice President  
714.935.2310  
esmith@voitco.com  
Lic. #01940591  
www.ericrandolphsmith.com



**DYLAN SHERSHENOVICH**  
Associate  
714.935.2312  
dshershenovich@voitco.com  
Lic. #02151453



FOR LEASE | ± 1,500 - 4,500 SF

High-Image Multi-Tenant Buildings

8200-8220 Katella Avenue, Stanton, CA

Suite E

FLOOR PLANS COMING SOON

INDUSTRIAL: 8210 KATELLA AVENUE					
Suite	Size SF	Office SF	Asking Rate/ SF	Availability	Comments
E	±1,500	TBD	\$1.65 PSF	August 1, 2025	Private restroom. 1 Ground level loading door.



**ERIC SMITH, SIOR**  
Senior Vice President  
714.935.2310  
esmith@voitco.com  
Lic. #01940591  
www.ericrandolphsmith.com



**DYLAN SHERSHENOVICH**  
Associate  
714.935.2312  
dshershenovich@voitco.com  
Lic. #02151453



FOR LEASE | ± 1,500 - 4,500 SF

High-Image Multi-Tenant Buildings

8200-8220 Katella Avenue, Stanton, CA

Suite F

FLOOR PLANS COMING SOON

INDUSTRIAL: 8210 KATELLA AVENUE					
Suite	Size SF	Office SF	Asking Rate/ SF	Availability	Comments
F	±1,500	TBD	\$1.65 PSF	August 1, 2025	Private restroom, 1 ground level loading door.



**ERIC SMITH, SIOR**  
Senior Vice President  
714.935.2310  
esmith@voitco.com  
Lic. #01940591  
www.ericrandolphsmith.com



**DYLAN SHERSHENOVICH**  
Associate  
714.935.2312  
dshershenovich@voitco.com  
Lic. #02151453

