

MacArthur Park

2901 - 2961 W. MACARTHUR BLVD | SANTA ANA

| Address | Sq. Ft. | Description | Rate/SF |
|----------------------------------|---------|---|-------------|
| 2901 W. MacArthur Suites 117/118 | ±3,694 | Reception, one window office, en-suite restroom, air conditioned warehouse with dinette and sink | \$1.85 NNN* |
| 2901 W. MacArthur Suite 203 | ±1,579 | 4 Offices and Open Area. | \$1.55 MG |
| 2961 W. MacArthur Suite 121 | ±1,854 | 2 Offices, in-suite restroom, warehouse. | \$1.85 NNN* |
| 2961 W. MacArthur Suite 133 | ±1,982 | Reception, one window office, en-suite restroom, air conditioned warehouse with kitchenette and sink. | \$1.85 NNN* |

*Estimated \$0.34 NNN Charges per Square Foot



Call to show. All suites are locked.

FOR MORE INFORMATION, PLEASE CONTACT:

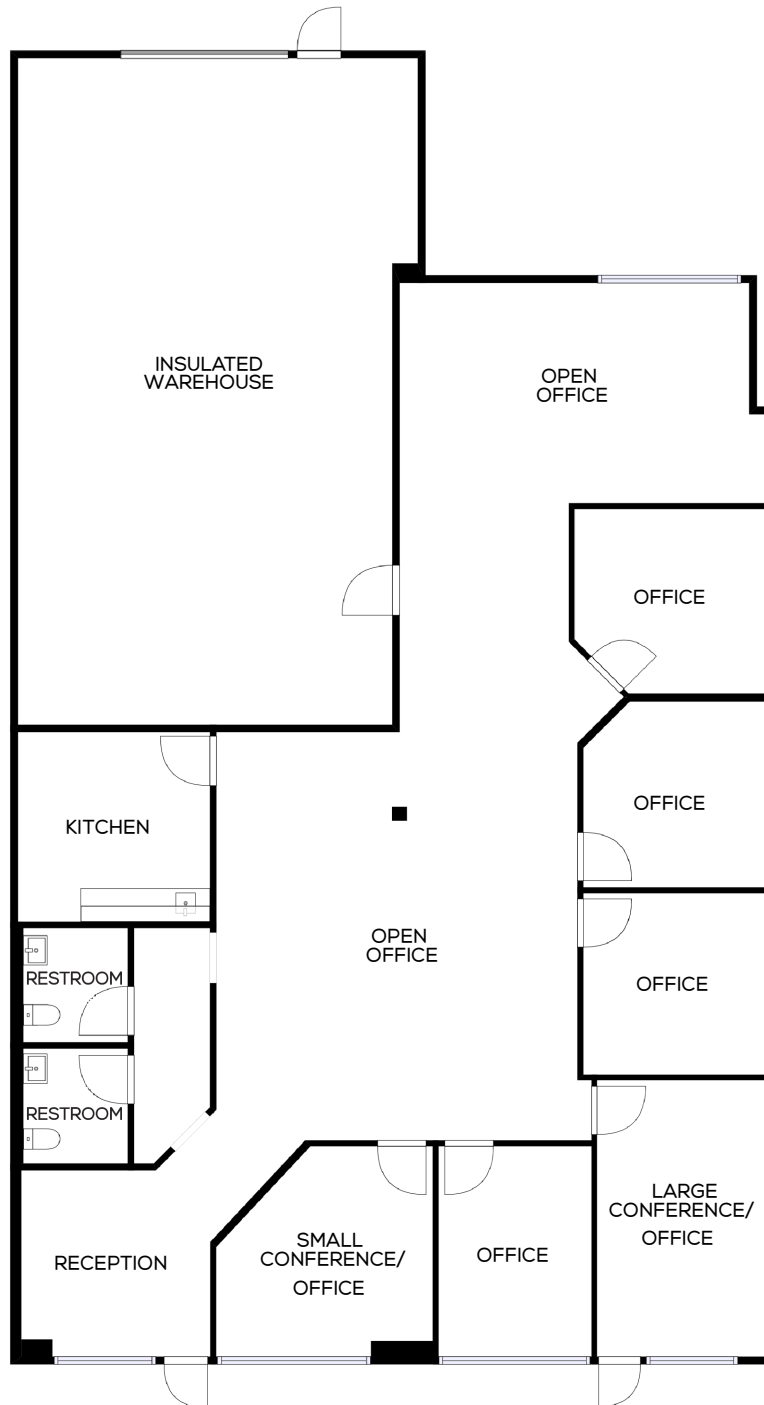
CARTER HARRINGTON
 949.724.4710
 charrington@lee-associates.com.com
 Lic. #01762924

LEE & ASSOCIATES
 COMMERCIAL REAL ESTATE SERVICES
 NEWPORT BEACH

MacArthur Park

2901 - 2961 W. MACARTHUR BLVD | SANTA ANA

BLDG 2901 • SUITES 117/118 • ±3,694 RSF



Call to show. All suites are locked.

FOR MORE INFORMATION, PLEASE CONTACT:

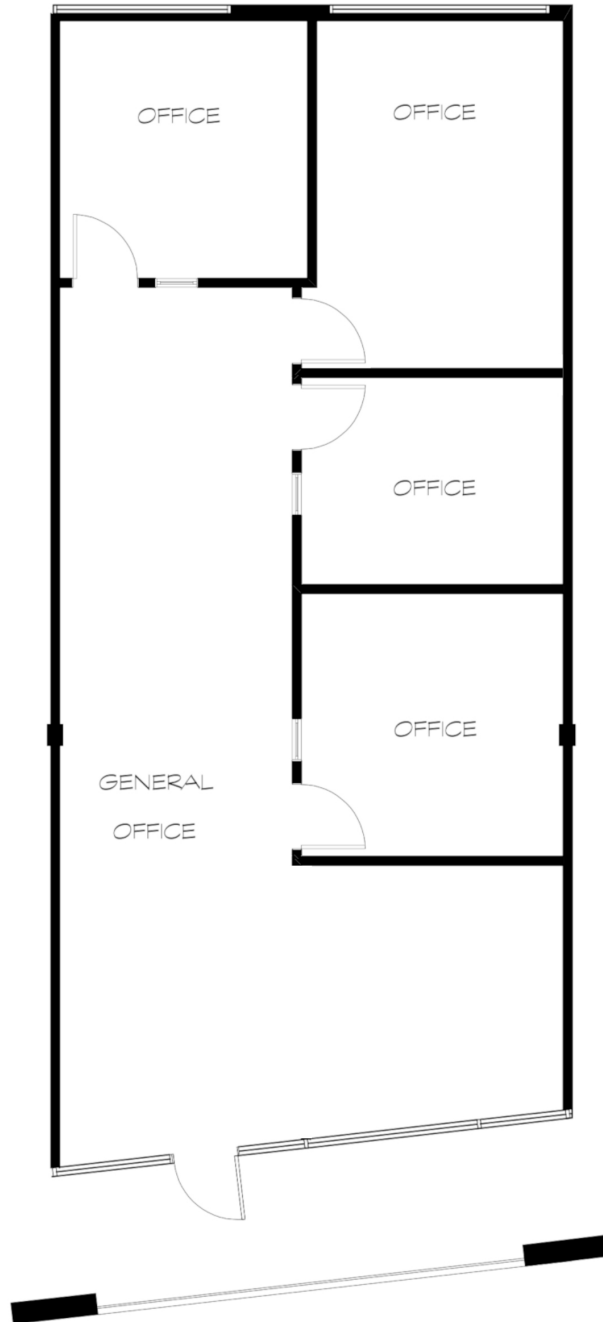
CARTER HARRINGTON
949.724.4710
charrington@lee-associates.com.com
Lic. #01762924

LEE & ASSOCIATES
COMMERCIAL REAL ESTATE SERVICES

MacArthur Park

2901 - 2961 W. MACARTHUR BLVD | SANTA ANA

BLDG 2901 • SUITE 203 • ±1,579 RSF



Call to show. All suites are locked.

FOR MORE INFORMATION, PLEASE CONTACT:

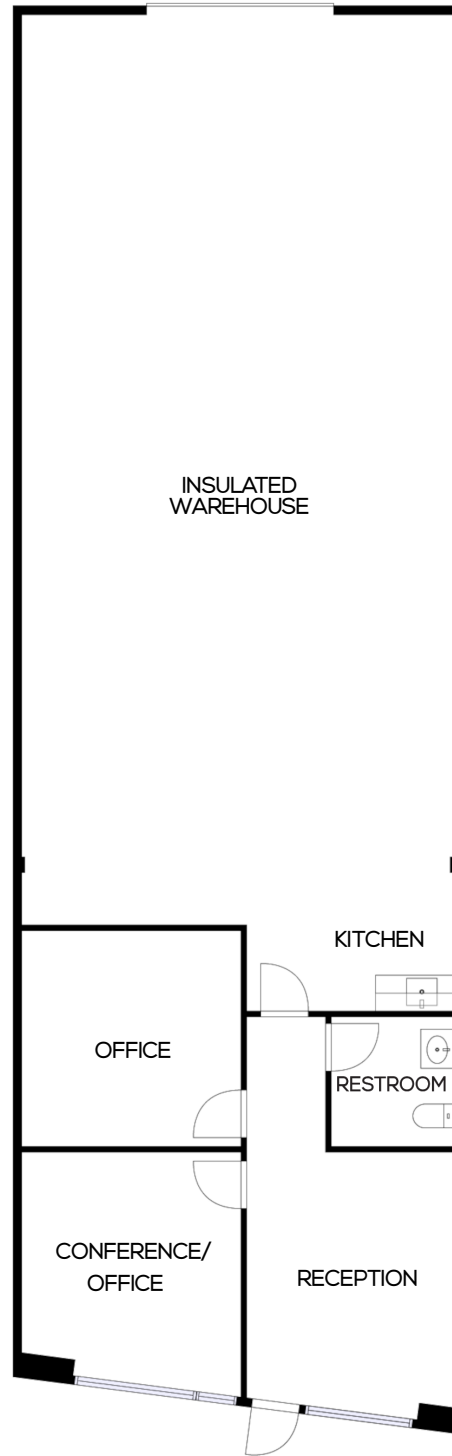
CARTER HARRINGTON
949.724.4710
charrington@lee-associates.com.com
Lic. #01762924

 **LEE &
ASSOCIATES**
COMMERCIAL REAL ESTATE SERVICES

MacArthur Park

2901 - 2961 W. MACARTHUR BLVD | SANTA ANA

BLDG 2961 • SUITE 121 • ±1,854 RSF



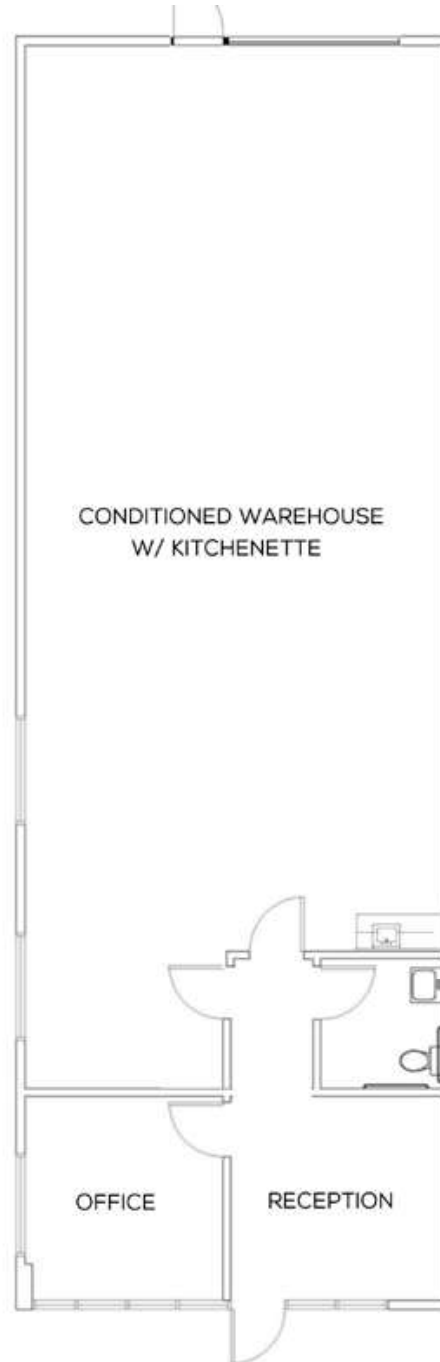
FOR MORE INFORMATION, PLEASE CONTACT:

CARTER HARRINGTON
949.724.4710
charrington@lee-associates.com.com
Lic. #01762924

MacArthur Park

2901 - 2961 W. MACARTHUR BLVD | SANTA ANA

BLDG 2961 • SUITE 133 • ±1,982 RSF



Call to show. All suites are locked.

FOR MORE INFORMATION, PLEASE CONTACT:

CARTER HARRINGTON
949.724.4710
charrington@lee-associates.com.com
Lic. #01762924

 **LEE &
ASSOCIATES**
COMMERCIAL REAL ESTATE SERVICES