

FOR LEASE

±740 - 1,480 SQ. FT. OFFICE SPACE

6000 Dale Street, Buena Park, CA 90638



PROPERTY FEATURES

- Frontage on Dale Street
- On Site Storage Facility Provides Tenants with Flexible Storage Options
- Easy Freeway Access to the **91** & **5**
- 24/7 Access to Space and HVAC
- Responsive Landlord
- Private Restrooms



STAN KWAK
SVP, Partner
714.935.2327
skwak@voitco.com
Lic. #01824776

ZAC KOLANDER
Associate
714.935.2301
zkolander@voitco.com
Lic. #02096759

Voit
REAL ESTATE SERVICES

2400 E. Katella Avenue, Suite 750
Anaheim, CA 92806
www.VoitCo.com

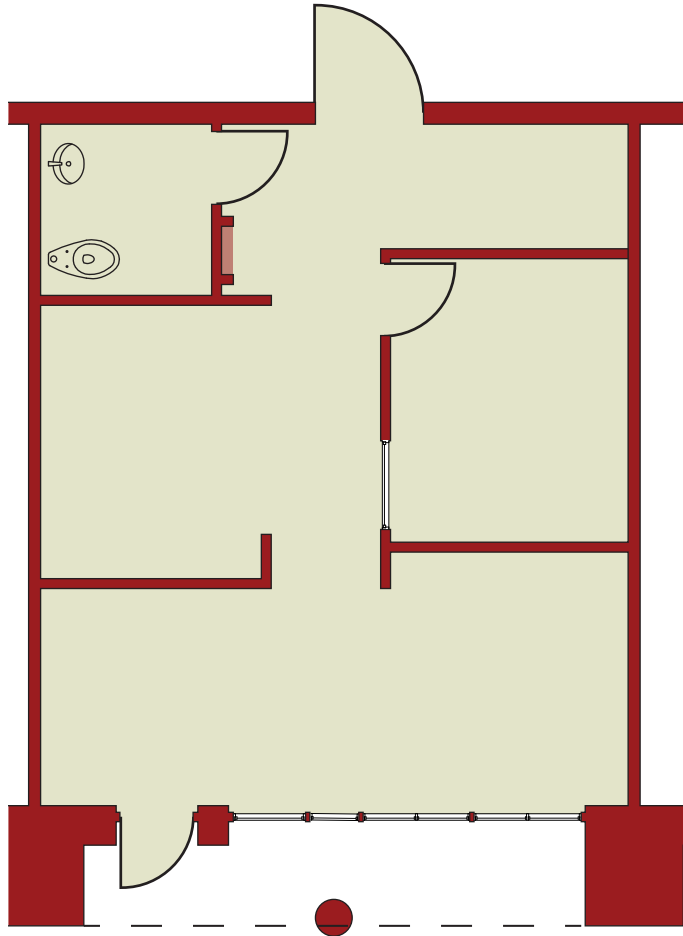
Licensed as a Real Estate Broker and Salesperson by the DRE. The information contained herein has been obtained from sources we deem reliable. While we have no reason to doubt its accuracy, we do not guarantee it. ©2019 Voit Real Estate Services, Inc. All Rights Reserved. Lic #01991785.

FOR LEASE

±740 - 1,480 SQ. FT. OFFICE SPACE

6000 Dale Street, Buena Park, CA 90638

SUITE 102



**Tenant pays for utilities and janitorial*

Address	Suite	Rentable SF	Asking Lease Rate	Availability & Comments
6000 Dale Street	102	±740	\$1.60 PSF	Available Now

STAN KWAK
SVP, Partner
714.935.2327
skwak@voitco.com
Lic. #01824776

ZAC KOLANDER
Associate
714.935.2301
zkolander@voitco.com
Lic. #02096759

Voit
REAL ESTATE SERVICES

2400 E. Katella Avenue, Suite 750
Anaheim, CA 92806
www.VoitCo.com

Licensed as a Real Estate Broker and Salesperson by the DRE. The information contained herein has been obtained from sources we deem reliable. While we have no reason to doubt its accuracy, we do not guarantee it. ©2019 Voit Real Estate Services, Inc. All Rights Reserved. Lic #01991785.