

Available  
Sub-Lease  
Office Space  
in  
Stone Haven  
Business Park

9480  
Utica Avenue  
Suite 611

FOR LEASING  
INFORMATION  
CONTACT:

Carol D. Plowman  
BRE License # 00849369  
909-373-2905

Danielle Parker  
BRE License # 01927503  
909-373-2906

3535 Inland Empire Blvd  
Ontario, CA 91764



Corporate ID# 00976995

# STONE HAVEN BUSINESS PARK

10600 - 10608 Trademark Parkway  
Rancho Cucamonga, CA 91730



## Great Business Park Environment:

- Multi-Tenant Office Park
- Building Signage Available
- Master Lease Expires 04/30/2028
- Up to 4:1,000 Parking on Select Units
- Easy Access to Interstate 10 and 15 Freeways
- Near LA-Ontario International Airport, Ontario Mills Mall, and Victoria Gardens



# STONE HAVEN BUSINESS PARK

Available  
Sub-Lease  
Office Space  
in  
Stone Haven  
Business Park

9480  
Utica Avenue  
Suite 611

FOR LEASING  
INFORMATION  
CONTACT:

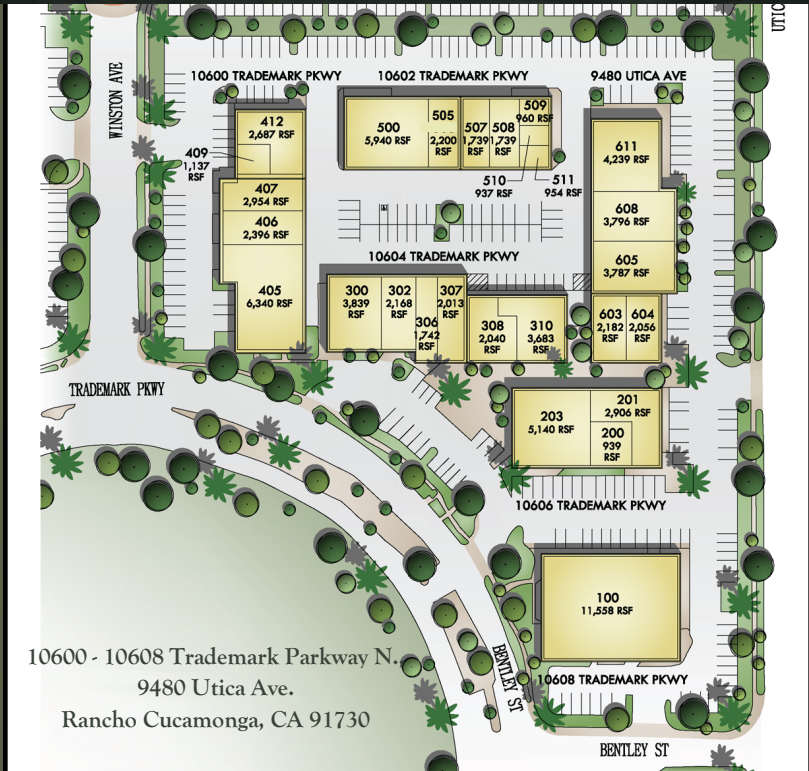


Corporate ID# 00976995

Carol D. Plowman  
BRE License # 00849369  
909-373-2905

Danielle Parker  
BRE License # 01927503  
909-373-2906

3535 Inland Empire Blvd  
Ontario, CA 91764



## AVAILABILITIES:

STREET ADDRESS	SUITE	±SF	RATE / SF	AVAILABILITY
9480 Utica Avenue	611	1,303	\$1.70	Available Now

Master Lease Expires: 04/30/2028

Available  
Sub-Lease  
Office Space

9480  
Utica Avenue  
Suite 611

FOR LEASING  
INFORMATION  
CONTACT:



Corporate ID# 00976995

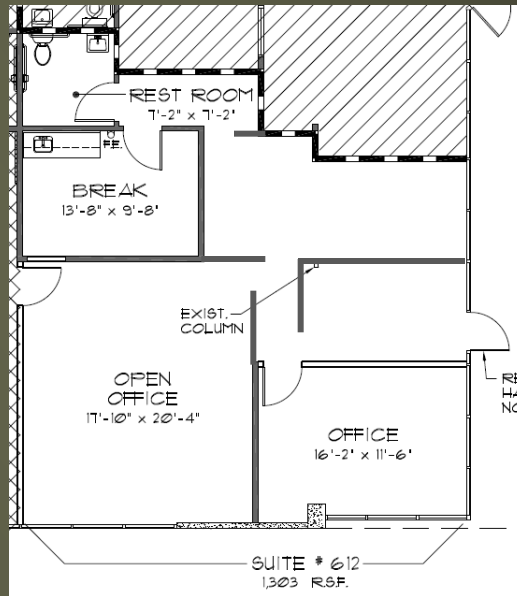
Carol D. Plowman  
BRE License # 00849369  
909-373-2905

Danielle Parker  
BRE License # 01927503  
909-373-2906

3535 Inland Empire Blvd  
Ontario, CA 91764



# STONE HAVEN BUSINESS PARK



Suite 611  
± 1,303 RSF