

# FOR LEASE

## ANAHEIM CORPORATE CENTER

5101 E LA PALMA AVENUE, ANAHEIM, CA 92807

23,579 SF



### OFFERING SUMMARY

**Property Name:** ANAHEIM CORPORATE CENTER  
**Available SF:** 3,800 SF

DEMOGRAPHICS	1 MILE	10 MILES	30 MILES
<b>Total Households</b>	2,793	367,032	2,859,614
<b>Total Population</b>	8,539	1,205,014	9,349,758
<b>Average HH Income</b>	\$97,705	\$95,035	\$84,217

SPACES	LEASE RATE	SIZE (SF)
<b>Suite 202</b>	\$1.85 SF/Yr	3,800

### PROPERTY DESCRIPTION

Ownership On Site  
Flexible Terms

### LOCATION DESCRIPTION

Excellent Access to 91, 55, and 57 Freeways  
Walking Distance to Retail and Restaurants

### PROPERTY HIGHLIGHTS

- Asking \$1.85 PSF Full Service Gross
- High-End Office Improvements
- Master Planned Business Park
- 4:1,000 Parking
- Ownership On Site
- Fully Sprinklered
- Walking Distance to Retail and Restaurants
- Excellent Access to 91, 55, and 57 Freeways

[CLICK FOR WEBSITE](#)

#### ERIK THOMPSON

Principal  
714.564.7151  
ethompson@lee-associates.com  
CalDRE #01458292

**LEE &  
ASSOCIATES**

COMMERCIAL REAL ESTATE SERVICES  
DRE # 01011260  
1004 West Taft Avenue, Suite 150  
Orange, CA 92865  
<https://www.lee-associates.com/orange/>

All information contained herein has been provided by Lessor and/or third parties, but has not been independently verified by Lee & Associates or its agent(s). Lessee and interested parties should independently verify all information communicated by these sources.

**FOR  
LEASE**

## ANAHEIM CORPORATE CENTER

5101 E LA PALMA AVENUE, ANAHEIM, CA 92807

23,579 SF



[CLICK FOR WEBSITE](#)

**ERIK THOMPSON**

Principal  
714.564.7151  
ethompson@lee-associates.com  
CalDRE #01458292

**LEE &  
ASSOCIATES**

COMMERCIAL REAL ESTATE SERVICES  
DRE # 01011260  
1004 West Taft Avenue, Suite 150  
Orange, CA 92865  
<https://www.lee-associates.com/orange/>

All information contained herein has been provided by Lessor and/or third parties, but has not been independently verified by Lee & Associates or its agent(s). Lessee and interested parties should independently verify all information communicated by these sources.

**FOR  
LEASE**

## ANAHEIM CORPORATE CENTER

5101 E LA PALMA AVENUE, ANAHEIM, CA 92807

23,579 SF



[CLICK FOR WEBSITE](#)

**ERIK THOMPSON**

Principal  
714.564.7151  
ethompson@lee-associates.com  
CalDRE #01458292

**LEE &  
ASSOCIATES**

COMMERCIAL REAL ESTATE SERVICES  
DRE # 01011260  
1004 West Taft Avenue, Suite 150  
Orange, CA 92865  
<https://www.lee-associates.com/orange/>

All information contained herein has been provided by Lessor and/or third parties, but has not been independently verified by Lee & Associates or its agent(s). Lessee and interested parties should independently verify all information communicated by these sources.

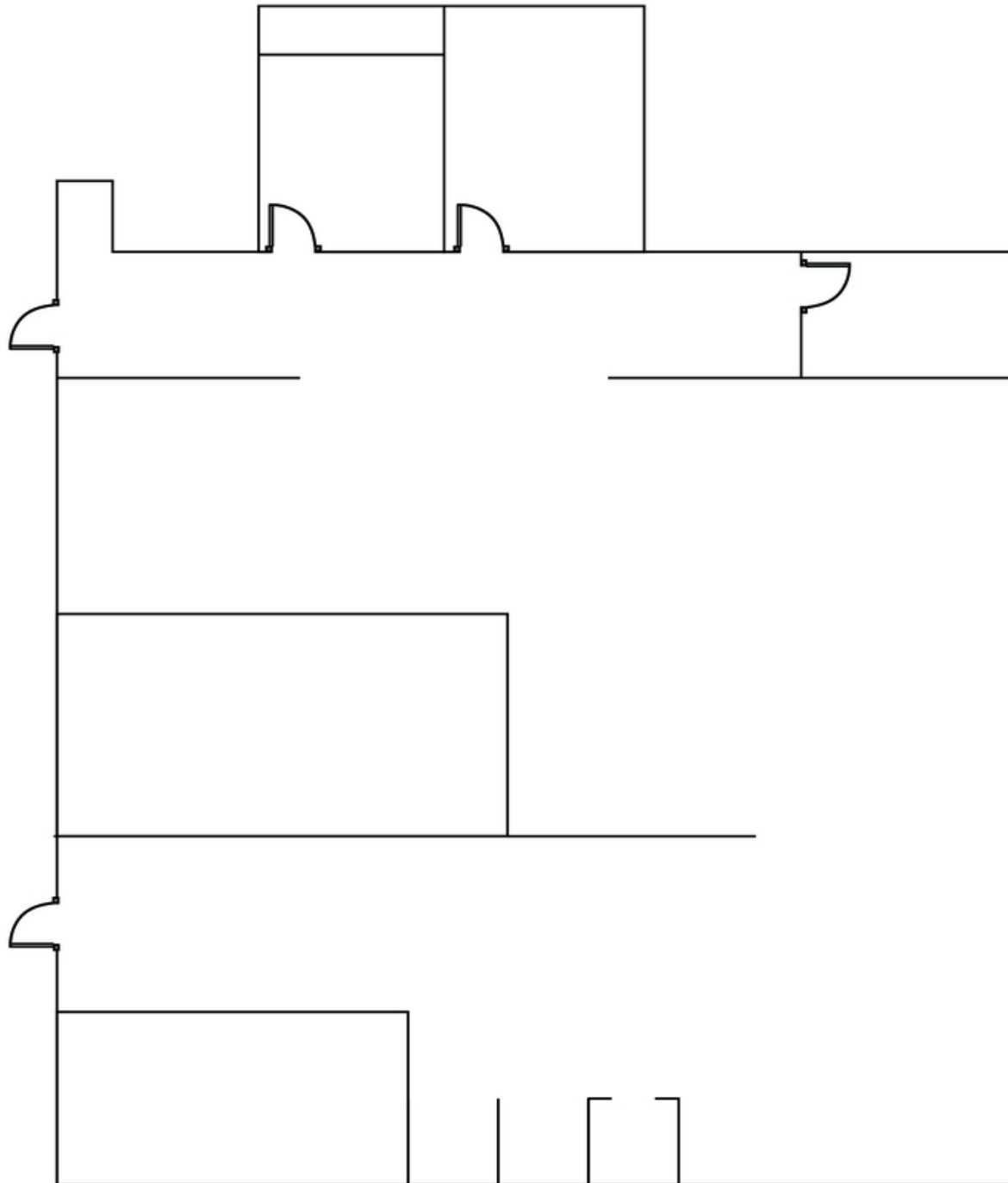
**FOR  
LEASE**

# ANAHEIM CORPORATE CENTER

5101 E LA PALMA AVENUE, ANAHEIM, CA 92807

23,579 SF

(Not to Scale)



Suite 202 | 3,800 SF

[CLICK FOR WEBSITE](#)

**ERIK THOMPSON**

Principal  
714.564.7151  
ethompson@lee-associates.com  
CalDRE #01458292



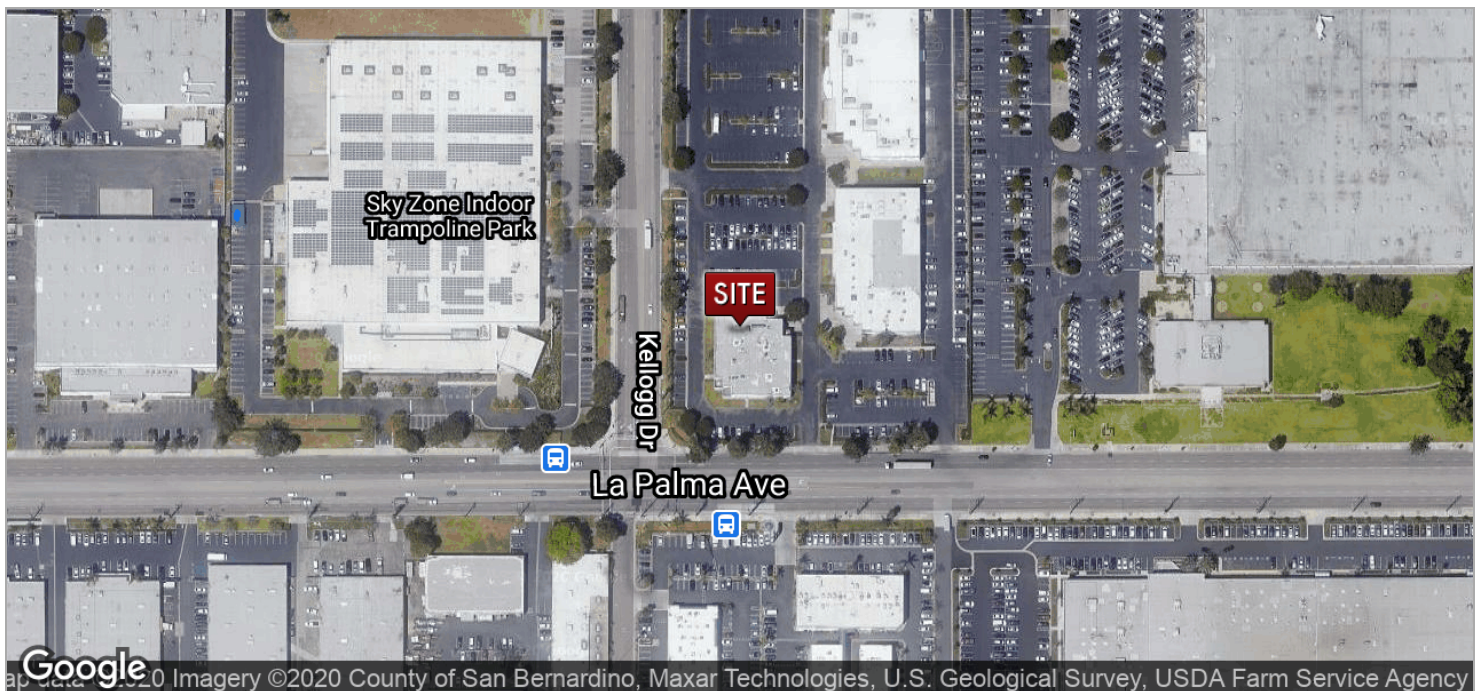
COMMERCIAL REAL ESTATE SERVICES  
DRE # 01011260  
1004 West Taft Avenue, Suite 150  
Orange, CA 92865  
<https://www.lee-associates.com/orange/>

**FOR  
LEASE**

# ANAHEIM CORPORATE CENTER

5101 E LA PALMA AVENUE, ANAHEIM, CA 92807

23,579 SF



[CLICK FOR WEBSITE](#)

**ERIK THOMPSON**

Principal  
714.564.7151  
ethompson@lee-associates.com  
CalDRE #01458292

**LEE &  
ASSOCIATES**

COMMERCIAL REAL ESTATE SERVICES  
DRE # 01011260  
1004 West Taft Avenue, Suite 150  
Orange, CA 92865  
<https://www.lee-associates.com/orange/>

All information contained herein has been provided by Lessor and/or third parties, but has not been independently verified by Lee & Associates or its agent(s). Lessee and interested parties should independently verify all information communicated by these sources.