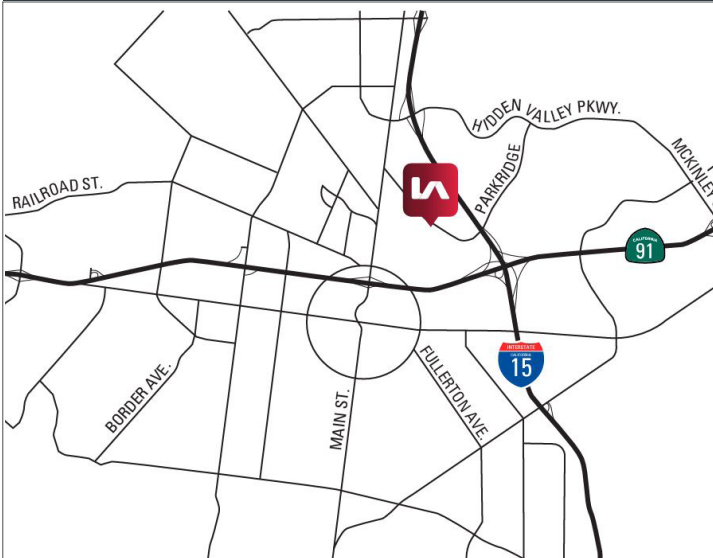




PARKRIDGE TECHNOLOGY CENTER

CORONA, CA

±815 - 4,404 SF
MULTI-TENANT INDUSTRIAL PARK



PROPERTY FEATURES

- » Part of a master planned project
- » Part of a larger four (4) building master planned project
- » Newly renovated
- » Great location with easy freeway access to both the 91 and 15 freeways
- » Walking distance to the Corona Metro-Link Station
- » Abundant retail amenities adjacent to the property

CHRIS COYTE
 ccoyte@lee-assoc.com
D 909.373.2935
 DRE # 01017328

JOHN MARTIN
 jmartin@lee-assoc.com
D 714.307.1250
 DRE # 01346629

LEE & ASSOCIATES - ONTARIO
 3535 Inland Empire Boulevard | Ontario, CA 91765
 (909) 989-7771 | lee-assoc.com
 Corporate ID: 00976995

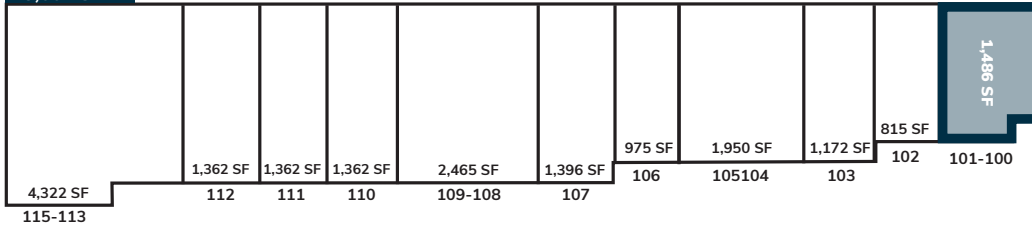


DISCLAIMER: The information contained herein has been obtained from the property owner or other third party and is provided to you without verification as to accuracy. We (Lee & Associates, its brokers, employees, agents, principals, officers, directors and affiliates) make no warranty or representation regarding the information, property, or transaction. You and your attorneys, advisors and consultants should conduct your own investigation of the property and transaction.

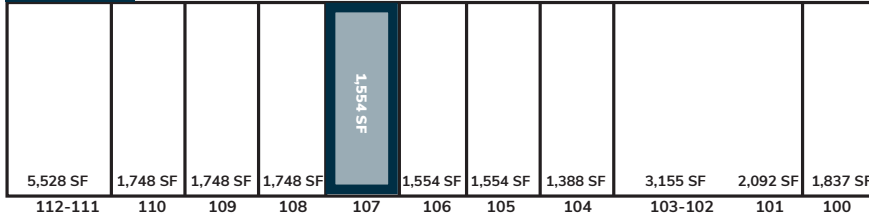
PARKRIDGE TECHNOLOGY CENTER

CORONA, CA

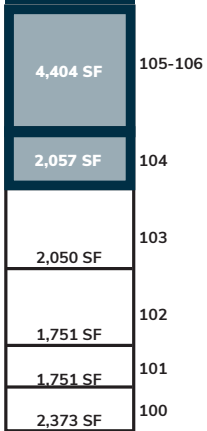
Bldg 650
18,667 SF



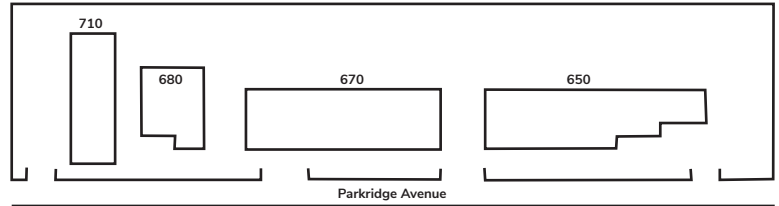
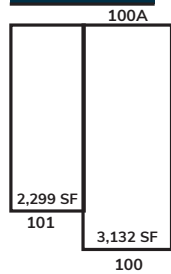
Bldg 670
21,906 SF



Bldg 710
14,388 SF



Bldg 680
5,431 SF



CURRENT AVAILABILITY

| ADDRESS | AVAILABLE SF | OFFICE SF | PRICE PSF | DATE AVAIL. |
|---------------------------------|--------------|-----------|-----------|-------------|
| 650 E. Parkridge, Suite 101-100 | 1,486 SF | 1,486 SF | \$1.65 | Now |
| 670 E. Parkridge, Suite 107 | 1,554 SF | 1,000 SF | \$1.65 | Now |
| 710 E. Parkridge, Suite 104 | 2,057 SF | 2,057 SF | \$1.65 | Now |
| 710 E. Parkridge, Suite 105-106 | 4,404 SF | 3,523 SF | \$1.65 | Now |

CHRIS COYTE
ccooyte@lee-assoc.com
D 909.373.2935
DRE # 01017328

JOHN MARTIN
jmartin@lee-assoc.com
D 714.307.1250
DRE # 01346629

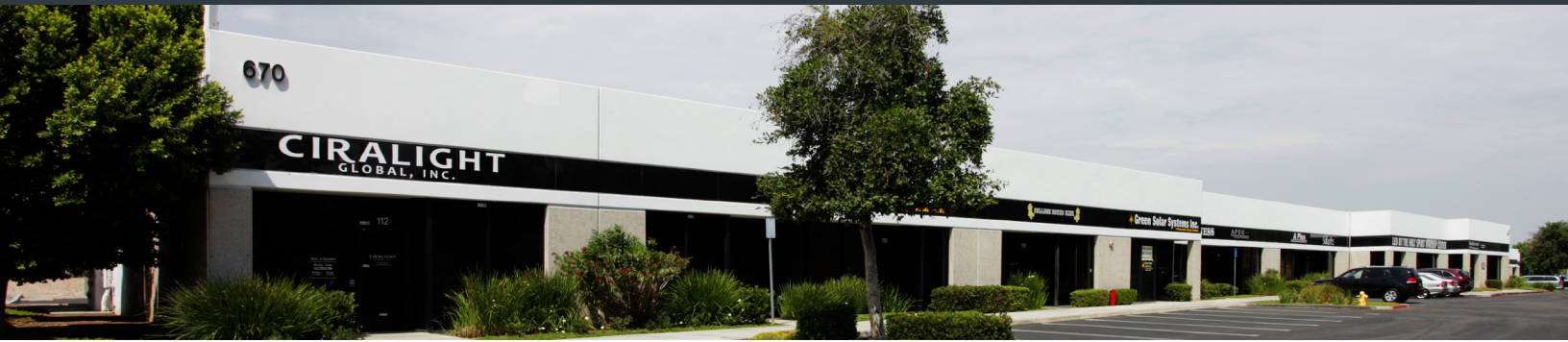
LEE & ASSOCIATES - ONTARIO
3535 Inland Empire Boulevard | Ontario, CA 91765
(909) 989-7771 | lee-assoc.com
Corporate ID: 00976995



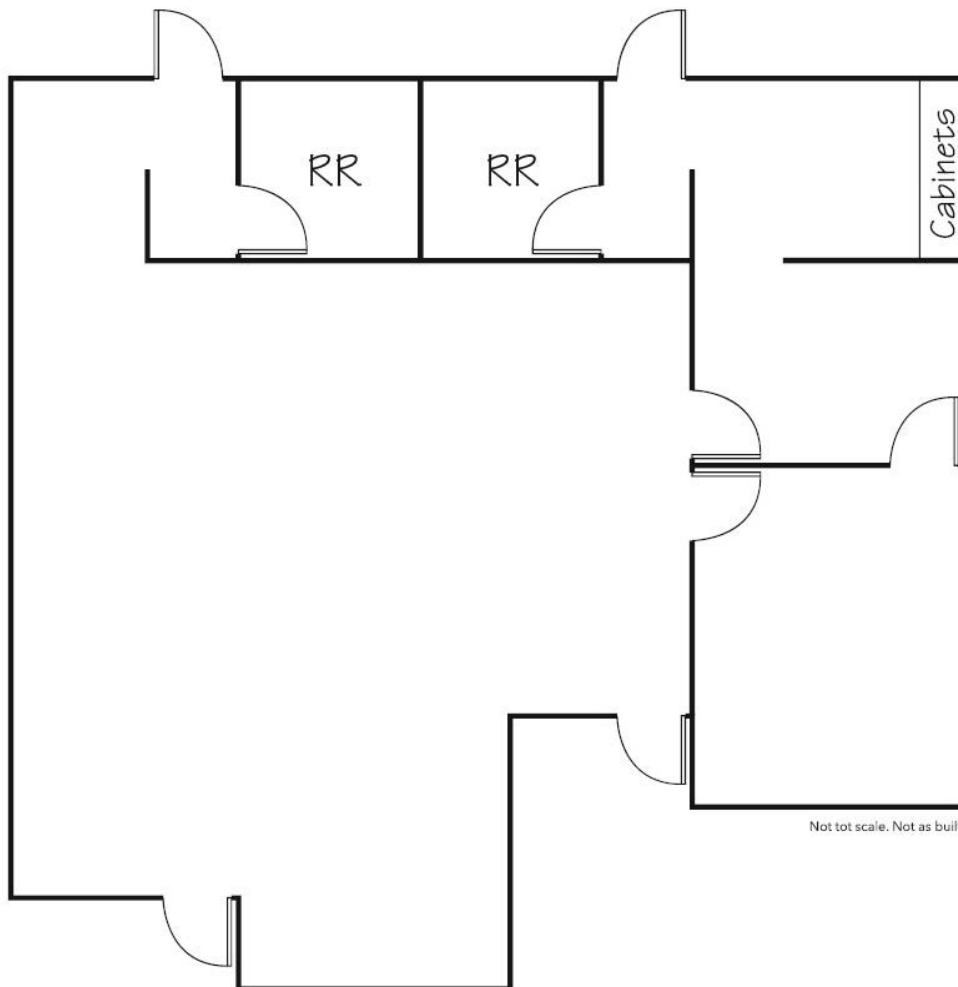
DISCLAIMER: The information contained herein has been obtained from the property owner or other third party and is provided to you without verification as to accuracy. We (Lee & Associates, its brokers, employees, agents, principals, officers, directors and affiliates) make no warranty or representation regarding the information, property, or transaction. You and your attorneys, advisors and consultants should conduct your own investigation of the property and transaction.

PARKRIDGE TECHNOLOGY CENTER

CORONA, CA



650 E. Parkridge, Suites 101-100



CHRIS COYTE
ccoyle@lee-assoc.com
D 909.373.2935
DRE # 01017328

JOHN MARTIN
jmartin@lee-assoc.com
D 714.307.1250
DRE # 01346629

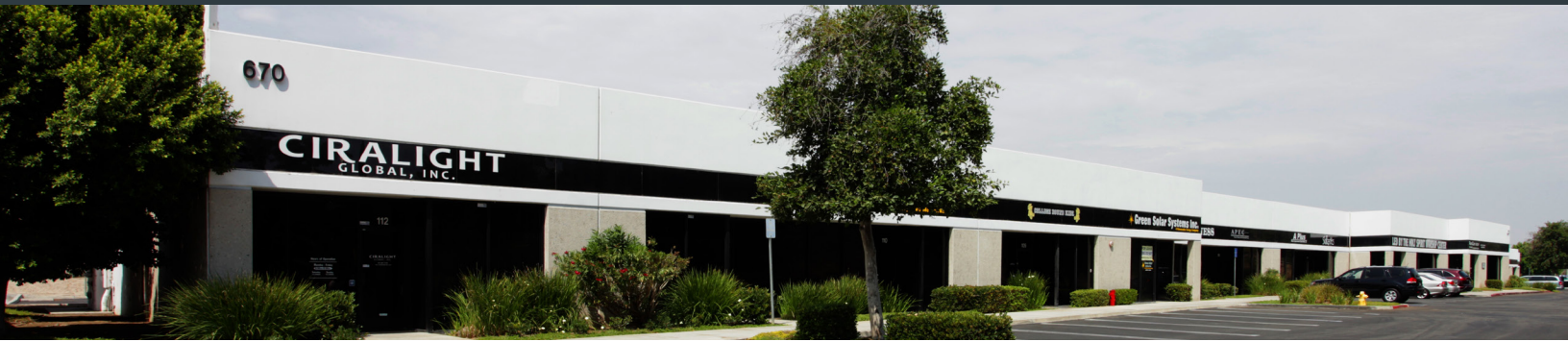
LEE & ASSOCIATES - ONTARIO
3535 Inland Empire Boulevard | Ontario, CA 91765
(909) 989-7771 | lee-assoc.com
Corporate ID: 00976995



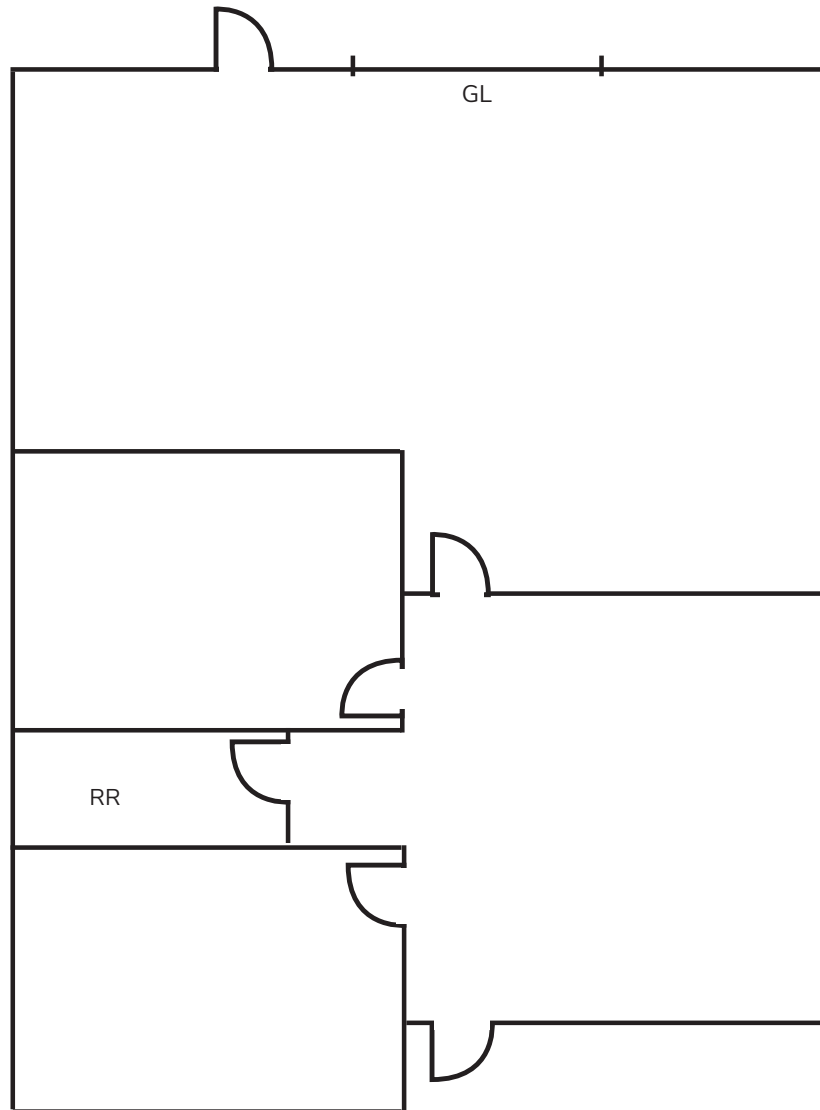
DISCLAIMER: The information contained herein has been obtained from the property owner or other third party and is provided to you without verification as to accuracy. We (Lee & Associates, its brokers, employees, agents, principals, officers, directors and affiliates) make no warranty or representation regarding the information, property, or transaction. You and your attorneys, advisors and consultants should conduct your own investigation of the property and transaction.

PARKRIDGE TECHNOLOGY CENTER

CORONA, CA



670 E. Parkridge, Suites 107



CHRIS COYTE
ccoyle@lee-assoc.com
D 909.373.2935
DRE # 01017328

JOHN MARTIN
jmartin@lee-assoc.com
D 714.307.1250
DRE # 01346629

LEE & ASSOCIATES - ONTARIO
3535 Inland Empire Boulevard | Ontario, CA 91765
(909) 989-7771 | lee-assoc.com
Corporate ID: 00976995



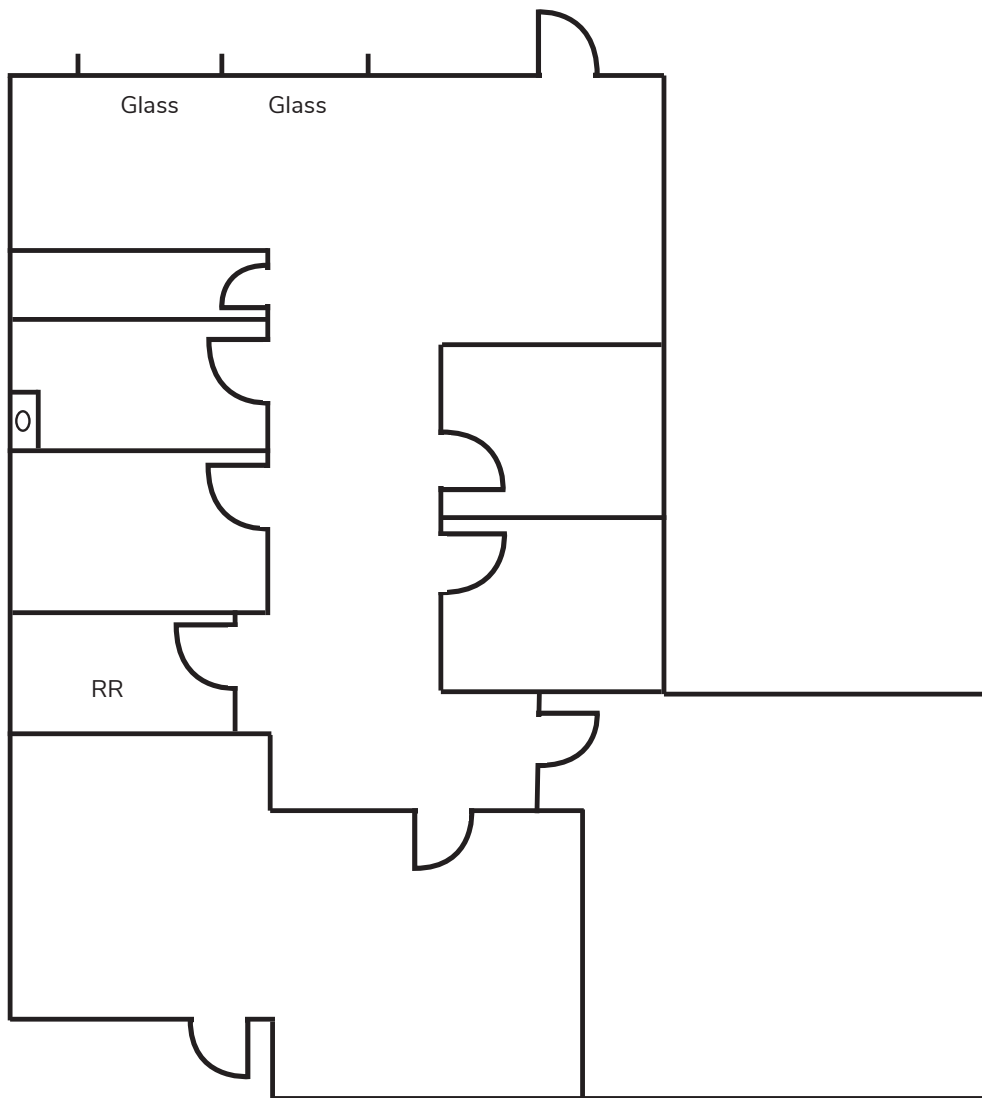
DISCLAIMER: The information contained herein has been obtained from the property owner or other third party and is provided to you without verification as to accuracy. We (Lee & Associates, its brokers, employees, agents, principals, officers, directors and affiliates) make no warranty or representation regarding the information, property, or transaction. You and your attorneys, advisors and consultants should conduct your own investigation of the property and transaction.

PARKRIDGE TECHNOLOGY CENTER

CORONA, CA



710 E. Parkridge, Suite 104



CHRIS COYTE
ccoyle@lee-assoc.com
D 909.373.2935
DRE # 01017328

JOHN MARTIN
jmartin@lee-assoc.com
D 714.307.1250
DRE # 01346629

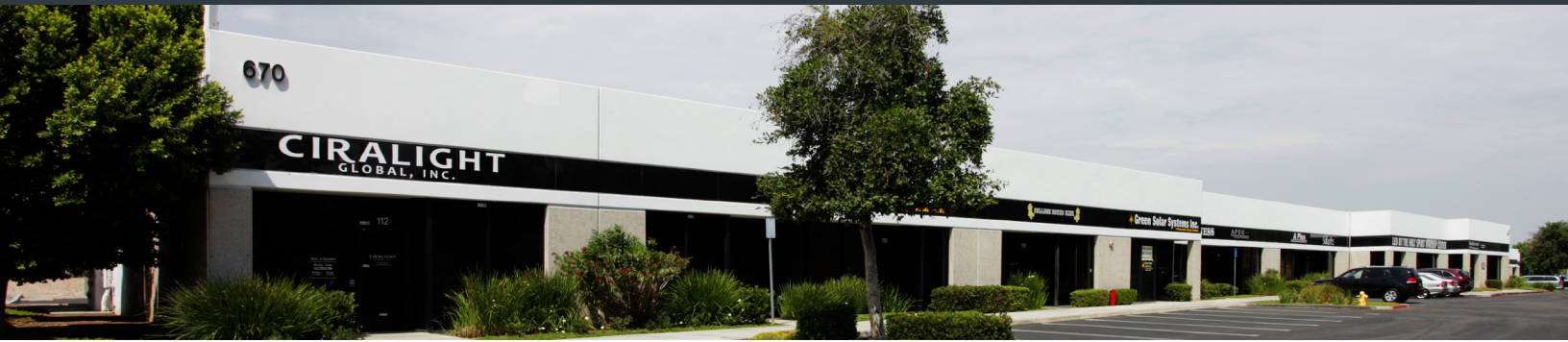
LEE & ASSOCIATES - ONTARIO
3535 Inland Empire Boulevard | Ontario, CA 91765
(909) 989-7771 | lee-assoc.com
Corporate ID: 00976995

LEE & ASSOCIATES
COMMERCIAL REAL ESTATE SERVICES

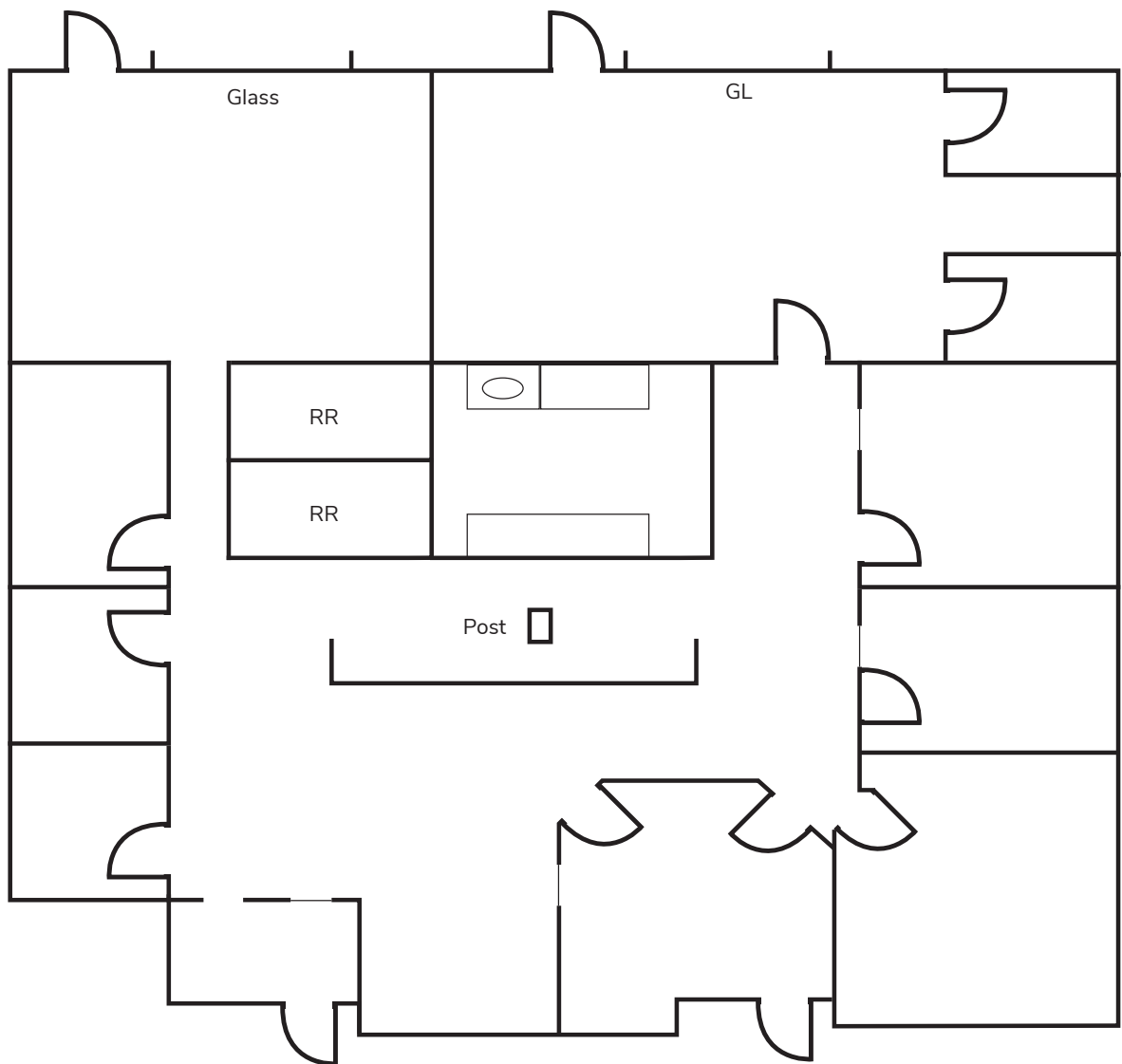
DISCLAIMER: The information contained herein has been obtained from the property owner or other third party and is provided to you without verification as to accuracy. We (Lee & Associates, its brokers, employees, agents, principals, officers, directors and affiliates) make no warranty or representation regarding the information, property, or transaction. You and your attorneys, advisors and consultants should conduct your own investigation of the property and transaction.

PARKRIDGE TECHNOLOGY CENTER

CORONA, CA



710 E. Parkridge, Suite 105-106



CHRIS COYTE
ccoyle@lee-assoc.com
D 909.373.2935
DRE # 01017328

JOHN MARTIN
jmartin@lee-assoc.com
D 714.307.1250
DRE # 01346629

LEE & ASSOCIATES - ONTARIO
3535 Inland Empire Boulevard | Ontario, CA 91765
(909) 989-7771 | lee-assoc.com
Corporate ID: 00976995



DISCLAIMER: The information contained herein has been obtained from the property owner or other third party and is provided to you without verification as to accuracy. We (Lee & Associates, its brokers, employees, agents, principals, officers, directors and affiliates) make no warranty or representation regarding the information, property, or transaction. You and your attorneys, advisors and consultants should conduct your own investigation of the property and transaction.