

# EXCHANGE PLACE

SAN BERNARDINO, CA

PROFESSIONAL OFFICE  
SPACE FOR LEASE



## PROPERTY FEATURES

- Professional Office Environment Located in Hospitality Lane Area
- Centrally Located to Riverside & San Bernardino Counties
- Immediate Occupancy Available
- 24 Hour Card Key Access
- Ample Free & Covered Parking
- Flexible Floor Plans

## MARKET DEMOGRAPHICS



Population  
**264,478**



Avg HH Income  
**\$90,075**



Employees  
**102,748**



E Hospitality Ln  
**23,383 CPD**



CONTACT:

**JOE PIERIK**

VICE PRESIDENT

DRE#: 02144961 // 951.276.3685

JPIERIK@LEERIVERSIDE.COM

**MASON WILSON**

ASSOCIATE

DRE#: 02163918 // 951.276.3603

MWILSON@LEERIVERSIDE.COM

**LES COPELIN**

SENIOR VICE PRESIDENT

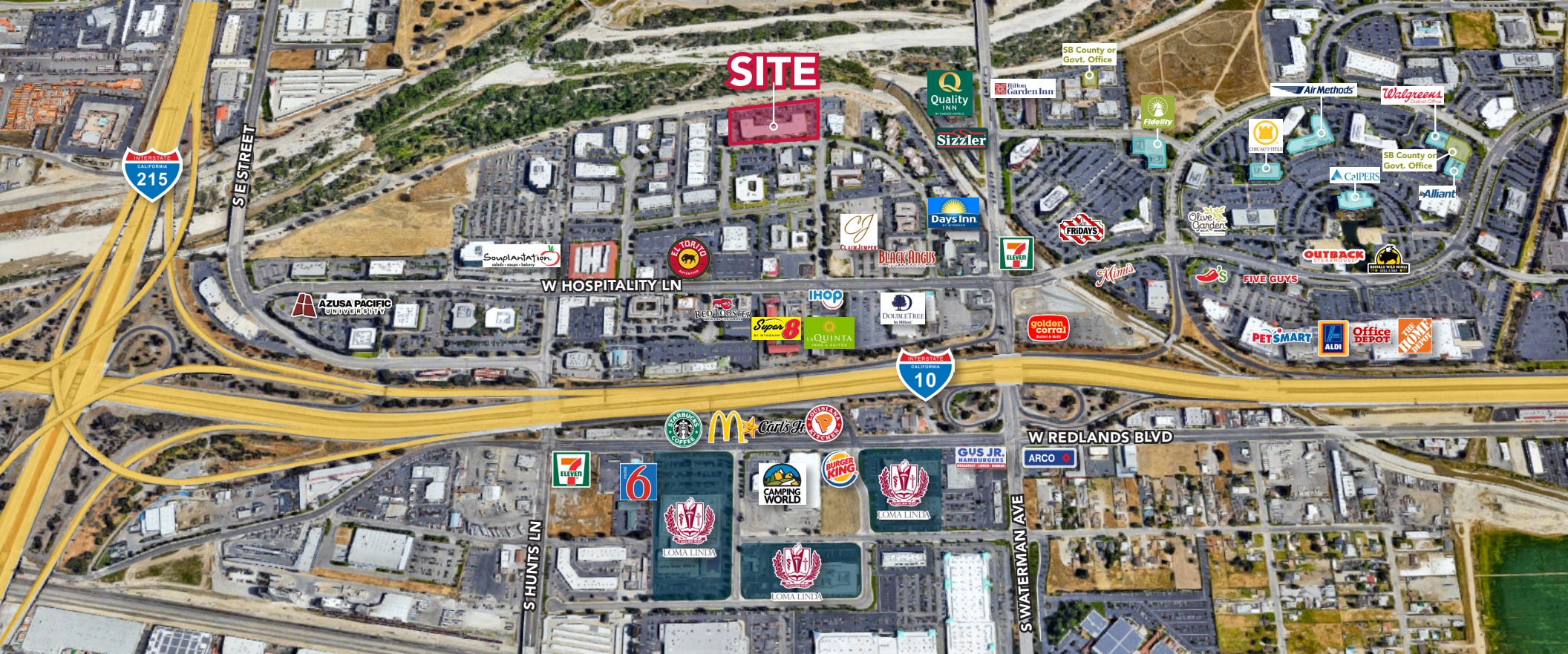
DRE#: 00995220 // 951.276.3629

LCOPELIN@LEERIVERSIDE.COM

1845 Business Center Dr, San Bernardino, CA

No warranty or representation has been made to the accuracy of the foregoing information. Terms of sale or lease and availability are subject to change or withdrawal without notice. Lee & Associates Commercial Real Estate Services, Inc. -Riverside, 3240 Mission Inn Avenue, Riverside, CA 92507, 951.276.3600, Corporate DRE#: 01048055 www.lee-associates.com





## AVAILABILITIES

SUITE	RSF	FEATURES	Rate	Video	Floor Plan
101	1,258	Small waiting area, 3 private offices, open work area	\$1.65 PSF		
111	6,343	Large waiting room, Reception and staffing areas, 7 large private offices, conference room (Suite is divisible)	\$1.65 PSF		
216	1,044	Large Open Area (Tenant Improvements Negotiable)	\$1.65 PSF		
220	1,386	Large Open Area, 1 Private Office, 1 Large Open Room, Storage Room, Phone/IT Closet	\$1.55 PSF		

CONTACT:



**JOE PIERIK**

VICE PRESIDENT

DRE#: 02144961 // 951.276.3685

JPIERIK@LEERIVERSIDE.COM

**MASON WILSON**

ASSOCIATE

DRE#: 02163918 // 951.276.3603

MWILSON@LEERIVERSIDE.COM

**LES COPELIN**

SENIOR VICE PRESIDENT

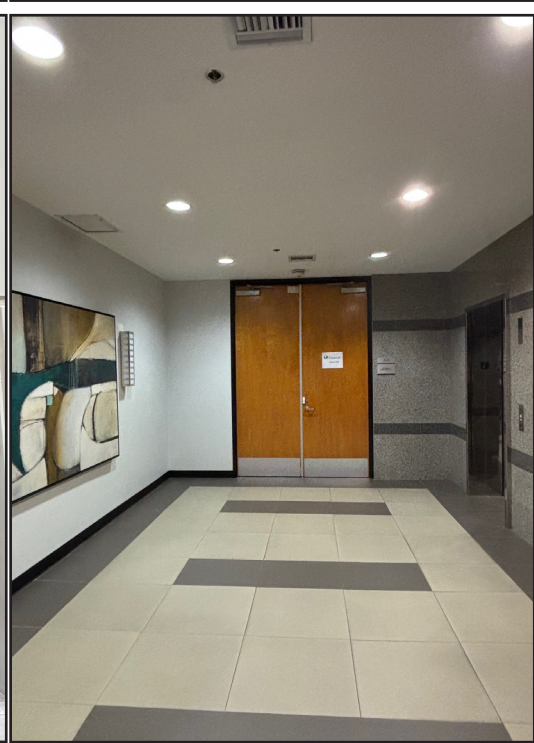
DRE#: 00995220 // 951.276.3629

LCOPELIN@LEERIVERSIDE.COM

1845 Business Center Dr, San Bernardino, CA

No warranty or representation has been made to the accuracy of the foregoing information. Terms of sale or lease and availability are subject to change or withdrawal without notice. Lee & Associates Commercial Real Estate Services, Inc. -Riverside. 3240 Mission Inn Avenue, Riverside, CA 92507, 951.276.3600, Corporate DRE#: 01048055 www.lee-associates.com





CONTACT:

**JOE PIERIK**

VICE PRESIDENT

DRE#: 02144961 // 951.276.3685

JPIERIK@LEERIVERSIDE.COM

**MASON WILSON**

ASSOCIATE

DRE#: 02163918 // 951.276.3603

MWILSON@LEERIVERSIDE.COM

**LES COPELIN**

SENIOR VICE PRESIDENT

DRE#: 00995220 // 951.276.3629

LCOPELIN@LEERIVERSIDE.COM

1845 Business Center Dr, San Bernardino, CA

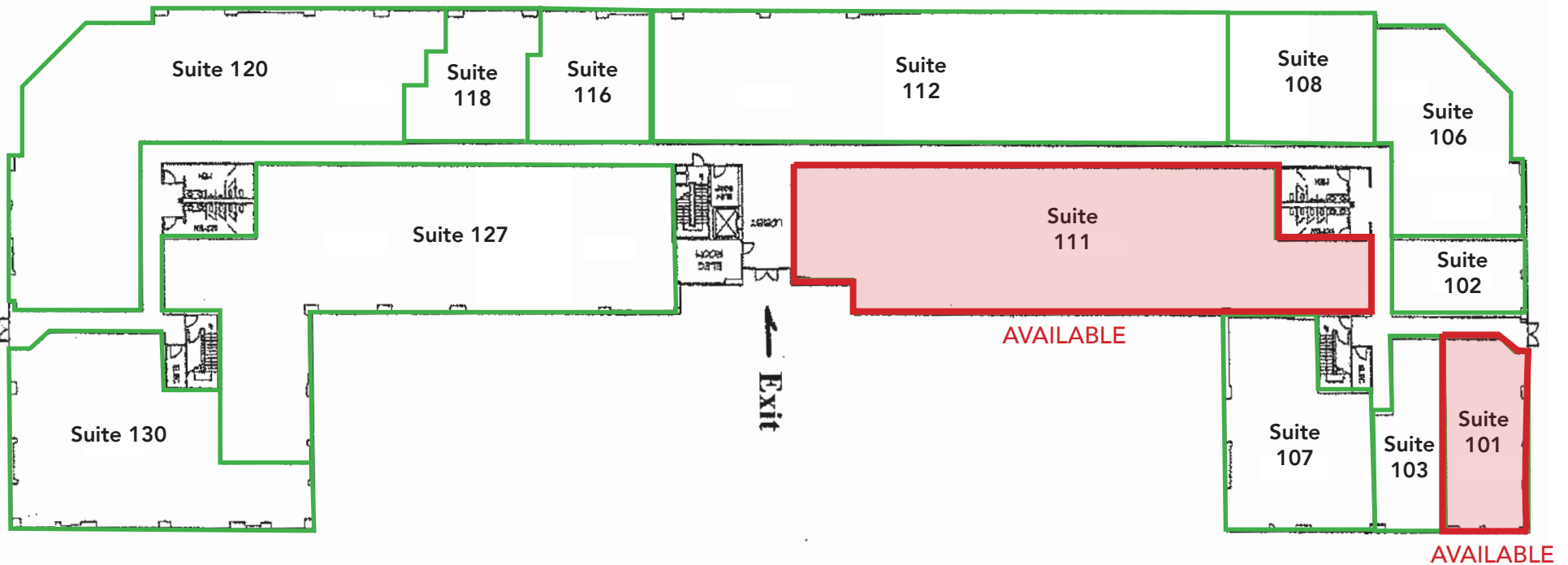


*No warranty or representation has been made to the accuracy of the foregoing information. Terms of sale or lease and availability are subject to change or withdrawal without notice. Lee & Associates Commercial Real Estate Services, Inc. -Riverside. 3240 Mission Inn Avenue, Riverside, CA 92507, 951.276.3600, Corporate DRE#: 01048055 www.lee-associates.com*



Exchange Place  
1845 Business Center Drive  
San Bernardino

First Floor



CONTACT:

**JOE PIERIK**

VICE PRESIDENT

DRE#: 02144961 // 951.276.3685

JPIERIK@LEERIVERSIDE.COM

**MASON WILSON**

ASSOCIATE

DRE#: 02163918 // 951.276.3603

MWILSON@LEERIVERSIDE.COM

**LES COPELIN**

SENIOR VICE PRESIDENT

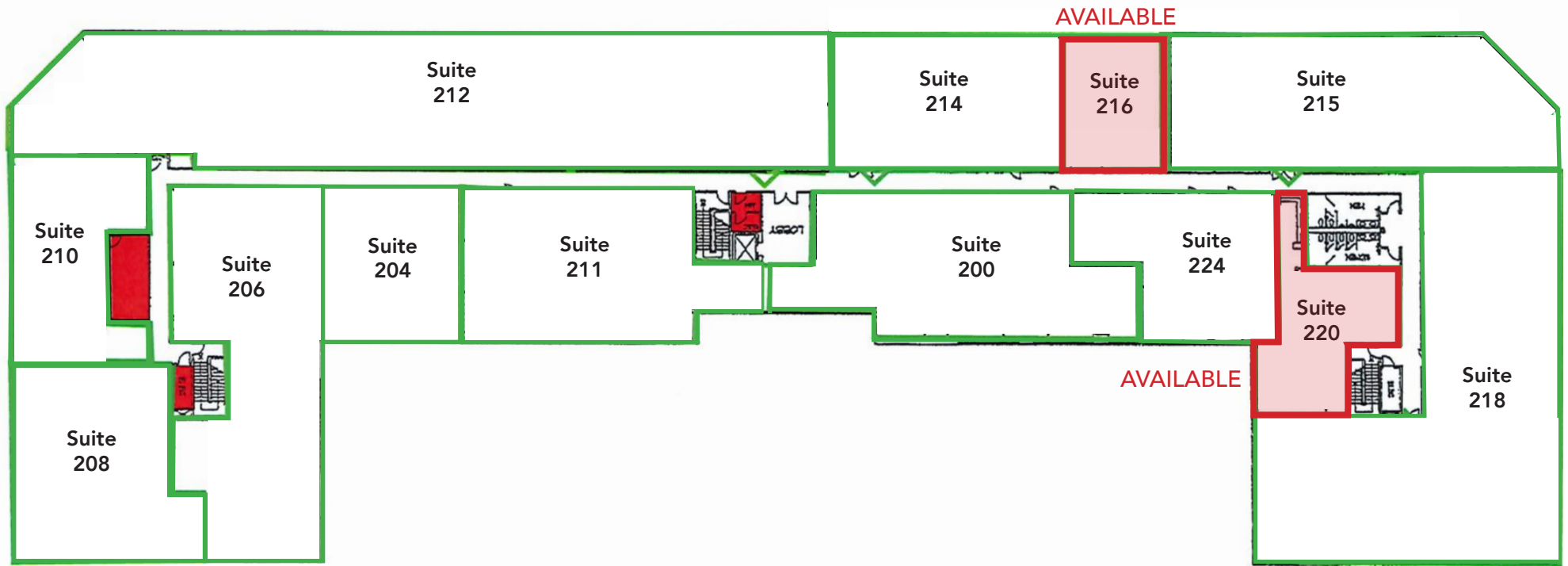
DRE#: 00995220 // 951.276.3629

LCOPELIN@LEERIVERSIDE.COM

1845 Business Center Dr, San Bernardino, CA

Exchange Place  
1845 Business Center Drive  
San Bernardino

Second Floor



CONTACT:

**JOE PIERIK**

VICE PRESIDENT

DRE#: 02144961 // 951.276.3685

JPIERIK@LEERIVERSIDE.COM

**MASON WILSON**

ASSOCIATE

DRE#: 02163918 // 951.276.3603

MWILSON@LEERIVERSIDE.COM

**LES COPELIN**

SENIOR VICE PRESIDENT

DRE#: 00995220 // 951.276.3629

LCOPELIN@LEERIVERSIDE.COM

1845 Business Center Dr, San Bernardino, CA

*No warranty or representation has been made to the accuracy of the foregoing information. Terms of sale or lease and availability are subject to change or withdrawal without notice. Lee & Associates Commercial Real Estate Services, Inc. -Riverside. 3240 Mission Inn Avenue, Riverside, CA 92507, 951.276.3600, Corporate DRE#: 01048055 www.lee-associates.com*