

3300
IRVINE

NEWPORT IRVINE CENTER
NEWPORT BEACH, CA



Exclusive Agents:

ANDREW ROBBEN
Managing Director
CA RE License #01372891
949.608.2073
arobben@ngkf.com

NAOMI RIZKOWSKY
Associate
CA RE License #01956011
949.608.2038
naomi.rizkowsky@ngkf.com

**Newmark
Knight Frank**

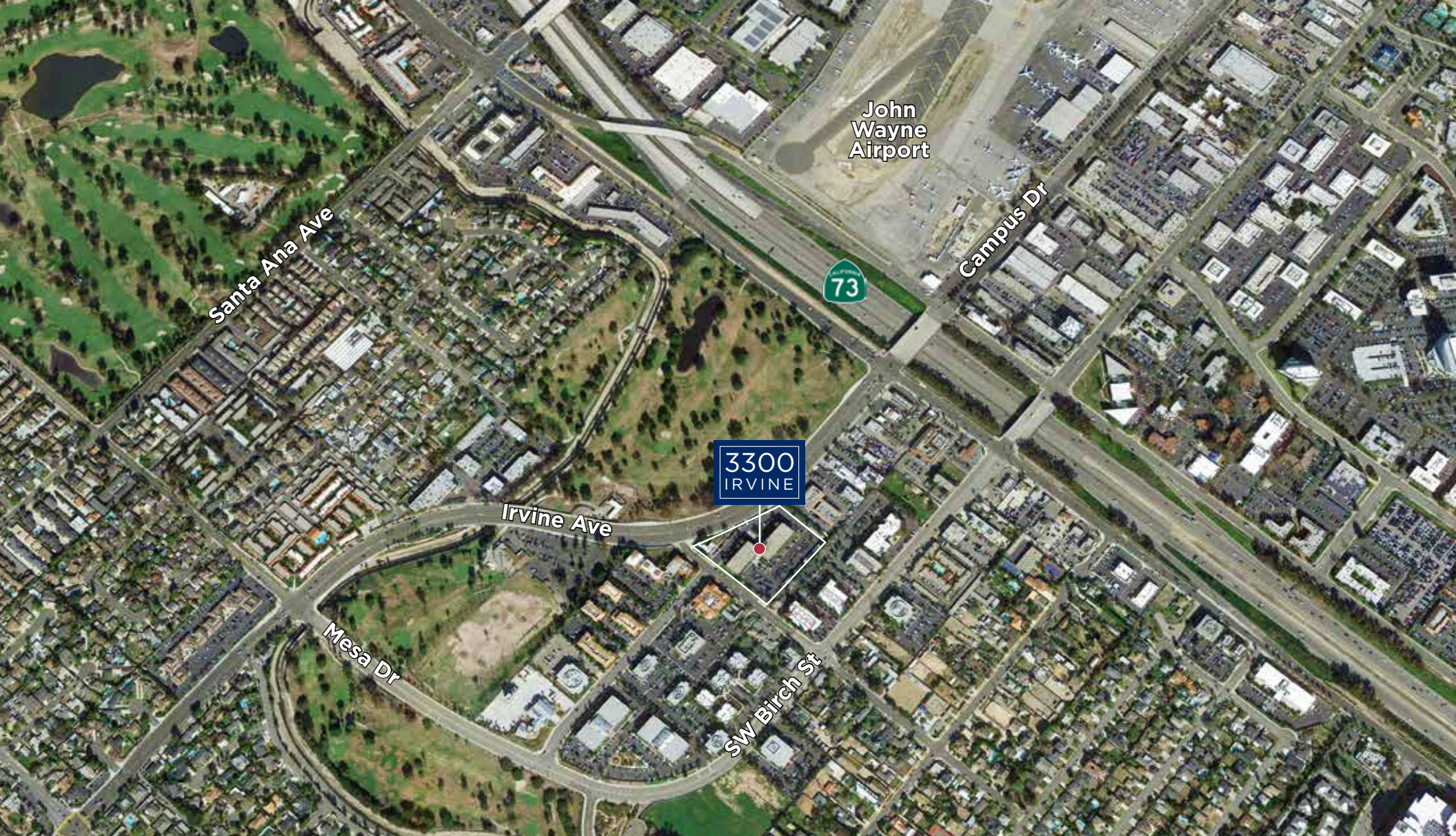
Corporate CA RE License #01355491





PROPERTY HIGHLIGHTS

- Strategically located in the heart of the Greater Airport Area of Orange County
- The building is close in proximity to hotels, banks and various retail amenities
- Convenient access to several major freeways, including the (73) toll road, San Diego (405) freeway, Costa Mesa (55) freeway and the Santa Ana (5) freeway
- The Property is close to John Wayne Airport, South Coast Plaza, Fashion Island and the University of California, Irvine
- 3-story office building comprised of approximately 76,834 SF
- Energy Star winner 2004
- Elevator served
- 4:1000 free surface parking; covered parking available
- Call to show



Exclusive Agents:

ANDREW ROBBERN
Managing Director
CA RE License #01372891
949.608.2073
arobben@ngkf.com

NAOMI RIZKOWSKY
Associate
CA RE License #01956011
949.608.2038
naomi.rizkowsky@ngkf.com

**Newmark
Knight Frank**

Corporate CA RE License #01355491



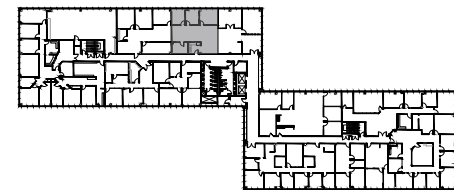
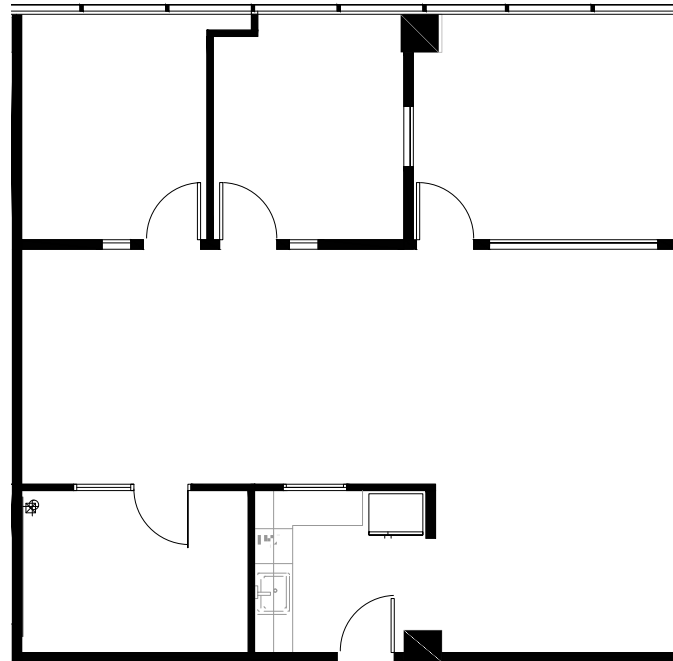
Procuring broker shall only be entitled to a commission, calculated in accordance with the rates approved by our principal only if such procuring broker executes a brokerage agreement acceptable to us and our principal and the conditions as set forth in the brokerage agreement are fully and unconditionally satisfied. Although all information furnished regarding property for sale, rental, or financing is from sources deemed reliable, such information has not been verified and no express representation is made nor is any to be implied as to the accuracy thereof and it is submitted subject to errors, omissions, change of price, rental or other conditions, prior sale, lease or financing, or withdrawal without notice and to any special conditions imposed by our principal.



NEWPORT IRVINE CENTER
NEWPORT BEACH, CA

Suite 200 | Floor 2

- 1,429 RSF
- Available: 12/1/17



Exclusive Agents:

ANDREW ROBBEN
Managing Director
CA RE License #01372891
949.608.2073
arobben@ngkf.com

NAOMI RIZKOWSKY
Associate
CA RE License #01956011
949.608.2038
naomi.rizkowsky@ngkf.com

**Newmark
Knight Frank**

Corporate CA RE License #01355491

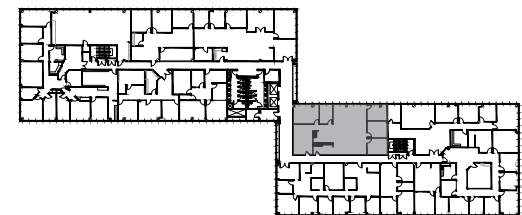
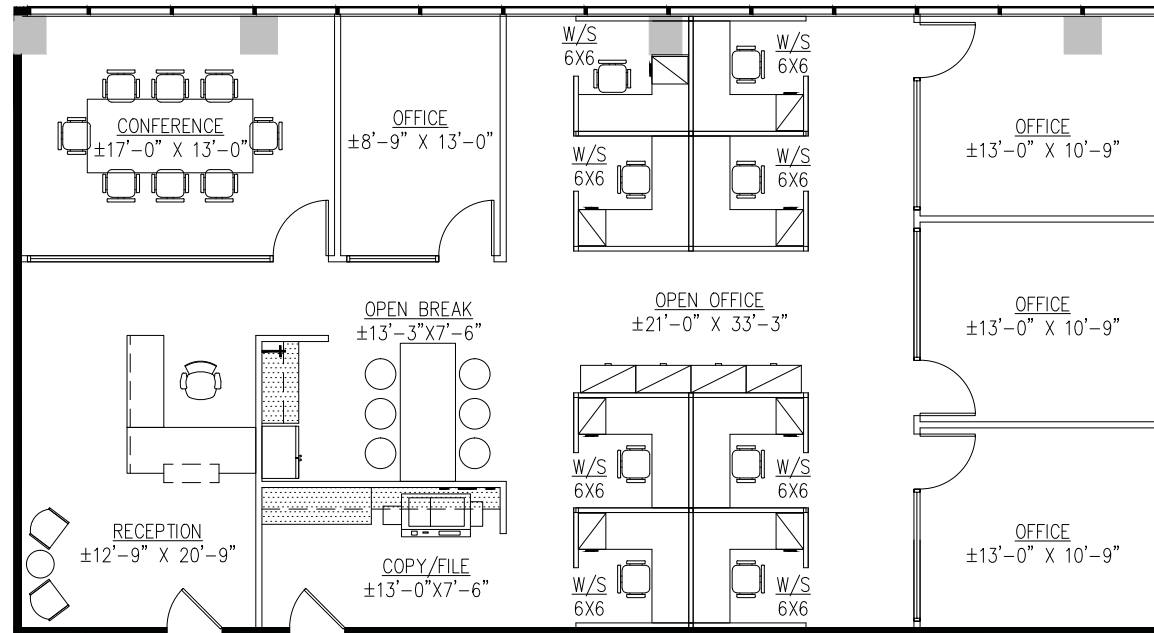


3300 IRVINE

NEWPORT IRVINE CENTER NEWPORT BEACH, CA

Suite 245 | Floor 2

- 2,539 RSF
- Available: Now
- Spec Suite



Exclusive Agents:

ANDREW ROBBEN

Managing Director
CA RE License #01372891
949.608.2073
arobben@ngkf.com

NAOMI RIZKOWSKY

Associate
CA RE License #01956011
949.608.2038
naomi.rizkowsky@ngkf.com

**Newmark
Knight Frank**

Corporate CA RE License #01355491

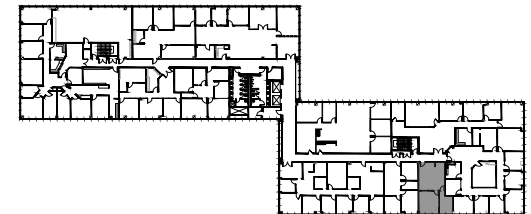
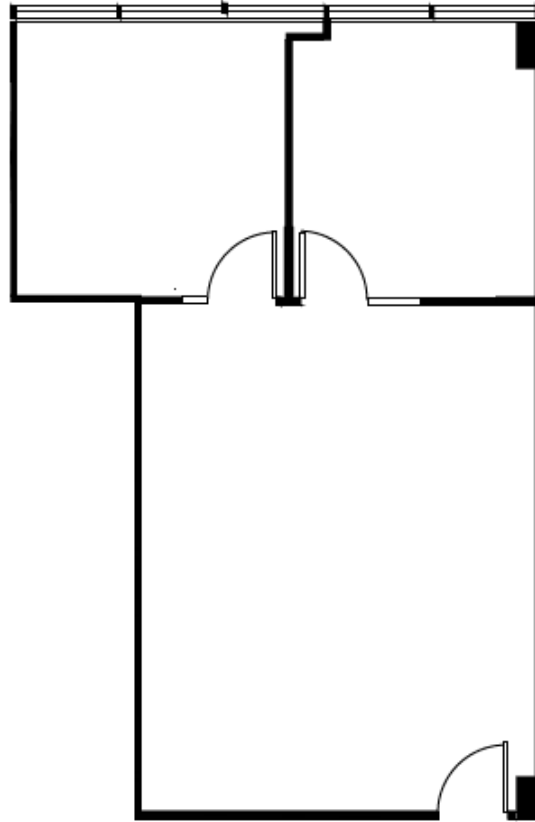




NEWPORT IRVINE CENTER
NEWPORT BEACH, CA

Suite 265 | Floor 2

- 803 RSF
- Available: 11/1/17
- “As-Built”



Exclusive Agents:

ANDREW ROBBEN
Managing Director
CA RE License #01372891
949.608.2073
arobben@ngkf.com

NAOMI RIZKOWSKY
Associate
CA RE License #01956011
949.608.2038
naomi.rizkowsky@ngkf.com

**Newmark
Knight Frank**

Corporate CA RE License #01355491

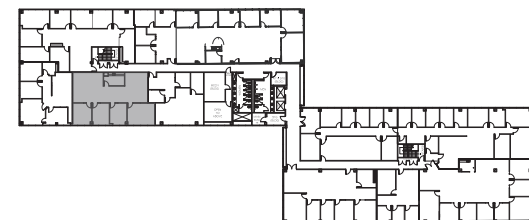
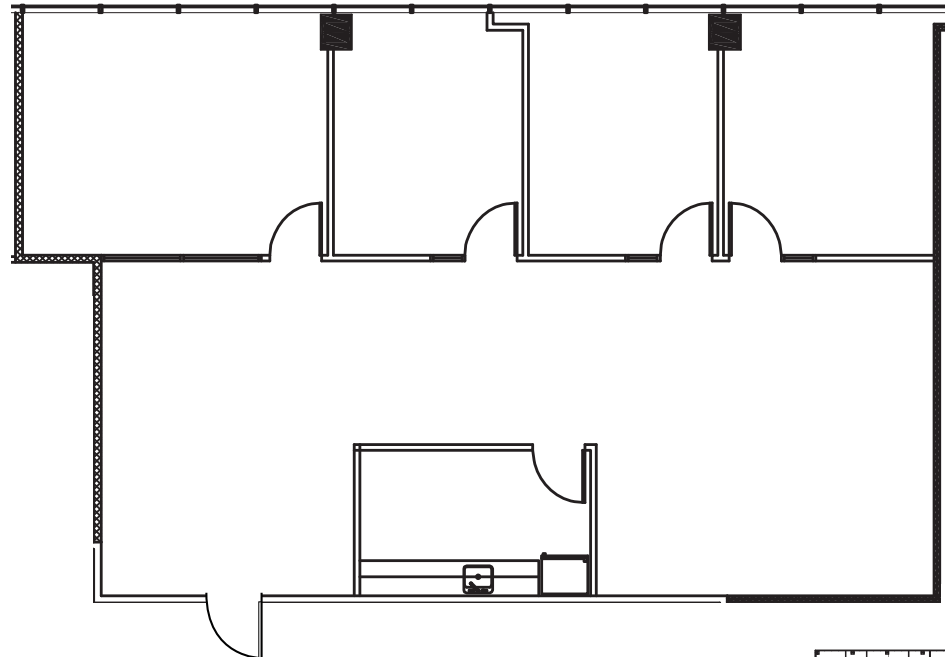


**3300
IRVINE**

NEWPORT IRVINE CENTER
NEWPORT BEACH, CA

Suite 310 | Floor 3

- 2,079 RSF
- Available: 60 Days
- "As-Built"



Exclusive Agents:

ANDREW ROBBEN

Managing Director
CA RE License #01372891
949.608.2073
arobben@ngkf.com

NAOMI RIZKOWSKY

Associate
CA RE License #01956011
949.608.2038
naomi.rizkowsky@ngkf.com

**Newmark
Knight Frank**

Corporate CA RE License #01355491

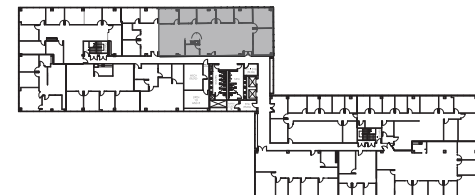
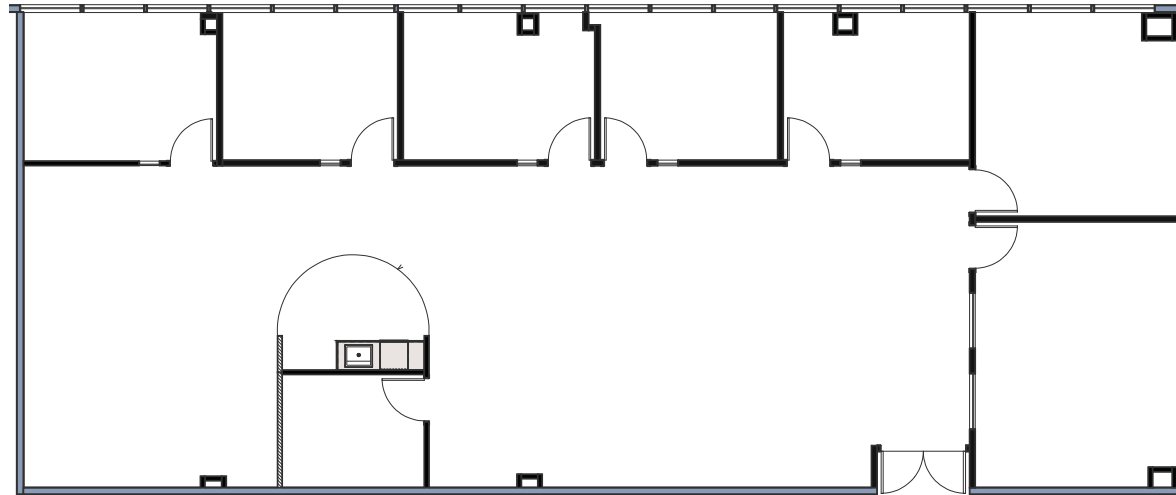


**3300
IRVINE**

NEWPORT IRVINE CENTER
NEWPORT BEACH, CA

Suite 370 | Floor 3

- 3,422 RSF
- Available: Now
- Spec Suite



Exclusive Agents:

ANDREW ROBBEN
Managing Director
CA RE License #01372891
949.608.2073
arobben@ngkf.com

NAOMI RIZKOWSKY
Associate
CA RE License #01956011
949.608.2038
naomi.rizkowsky@ngkf.com

**Newmark
Knight Frank**

Corporate CA RE License #01355491

