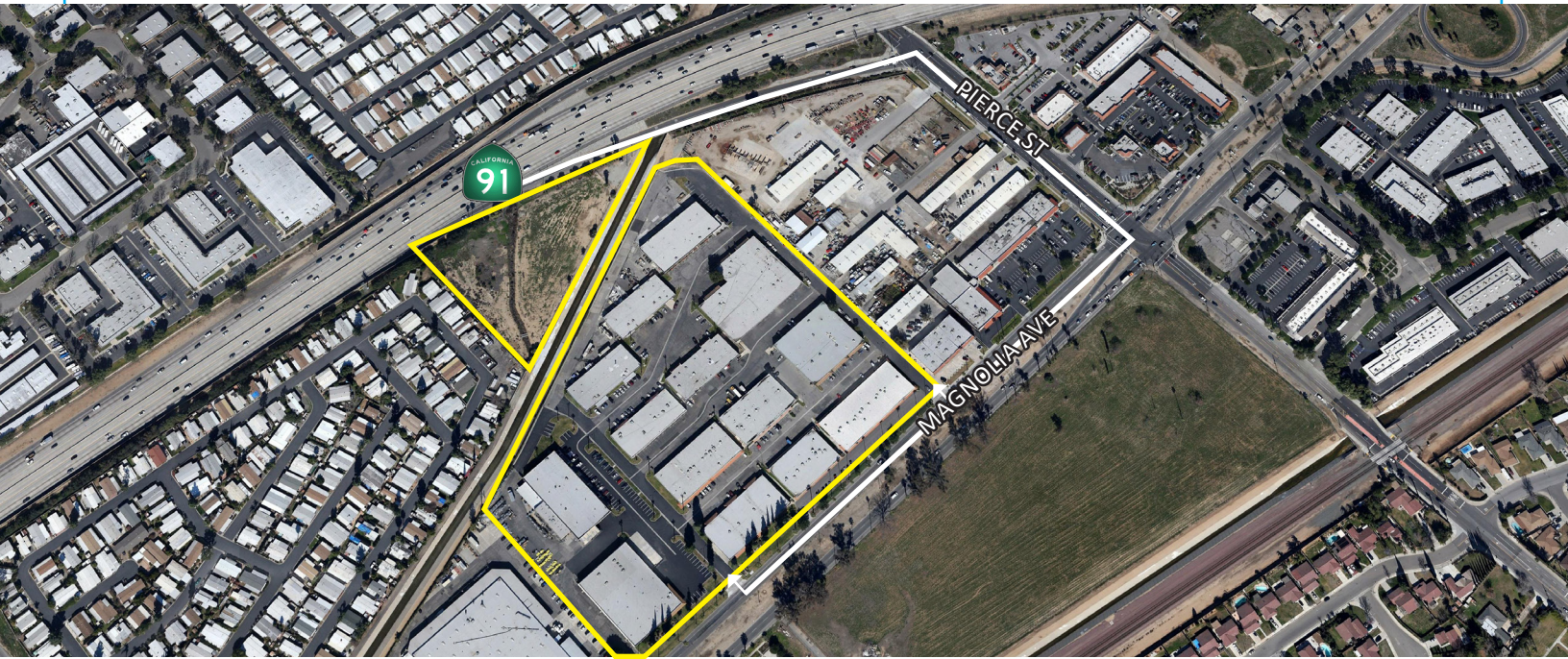


# MAGNOLIA CIRCLE INDUSTRIAL PARK

AVAILABLE  $\pm 2,109$  SF -  $\pm 5,581$  SF



12155 MAGNOLIA AVENUE | RIVERSIDE, CA 92503

## FEATURES


- Multi-Tenant Industrial and Office Business Park
- Small Industrial Units Ranging from 1,113 SF - 11,546 SF
- Freestanding Buildings Ranging from 21,403 SF - 30,421 SF
- Some Buildings have Private Yards
- On the Corona/Riverside Border with Riverside Public Utilities
- Abundant Parking and Wide Drive Aisles for Truck Access
- Excellent Freeway Access
- Between Pierce St/Riverwalk and McKinley



# MAGNOLIA CIRCLE INDUSTRIAL PARK

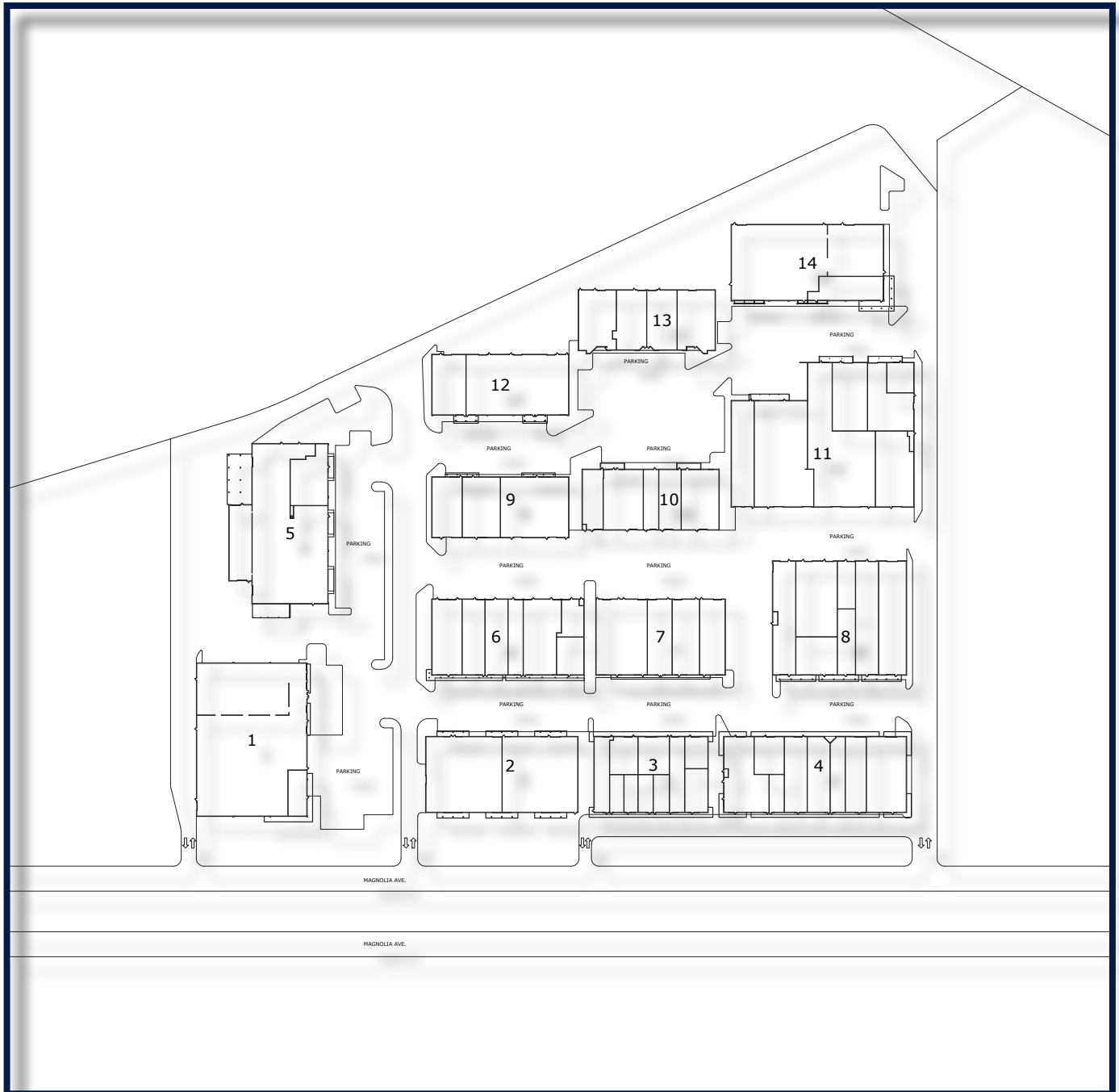
12155 MAGNOLIA AVENUE | RIVERSIDE, CA 92503  
 AVAILABILITIES

## INDUSTRIAL

BLDG-SUITE	SQ. FT.	RATE-CAM	COMMENTS	Video	Floor Plan
Building 4-F*	2,221 SF	\$1.25/SF + \$0.07	Available, 1 GL Door		
Building 9- C	3,314 SF	\$1.25/SF + \$0.07	Available with 30 Days Notice		
Building 4-E*	3,360 SF	\$1.25/SF + \$0.07	Available		
Building 7-D	3,780 SF	\$1.35/SF + \$0.07	1 GL Door, Available May 1, 2025		

\* CAN BE COMBINED FOR 5,581 SF

# MAGNOLIA CIRCLE INDUSTRIAL PARK



# MAGNOLIA CIRCLE INDUSTRIAL PARK



## Location

