

AVAILABILITY

2100-2110 E. MCFADDEN AVE. | SANTA ANA | CA | 92705

Address	Suite	Total Size ¹	Asking Rate Mod. Gross Per Sq. Ft.	Monthly Rent	Comments
2100 E. McFadden Ave.	A	±2,432	\$1.50 PSF Mod. Gross	\$3,648.00	Frontage space. Reception, large private offices, 2 restrooms and large warehouse with ground level loading door. No Auto please.

****There is an additional Common Area Maintenance (CAM) Fee of \$75.00 per month.***

¹Approximate total and office square footage

HAYDEN SOCCI, SIOR, CCIM

Senior Vice President | Partner

(714) 935-2379

hsocci@voitco.com

License #01705038

Voit

REAL ESTATE SERVICES

2400 E. Katella Ave., Suite 750

Anaheim, CA 92806

714.978.7880 • 714.978.9431 Fax

www.VoitCo.com

FOR LEASE

AVAILABILITY

2100-2110 E. MCFADDEN AVE. | SANTA ANA | CA | 92705



PROPERTY FEATURES

- Business Park Environment
- Units Range From 1,248 - 5,720 Sq. Ft.
- McFadden Avenue Street Frontage
- Multiple Sizes & Configurations
- Ground Level Loading Door(s)
- ±14' Warehouse Clearance
- Designated Parking
- Excellent Access to the 55, 5, and 405 Freeways



HAYDEN SOCCI, SIOR, CCIM

Senior Vice President | Partner

(714) 935-2379

hsocci@voitco.com

License #01705038

Voit

REAL ESTATE SERVICES

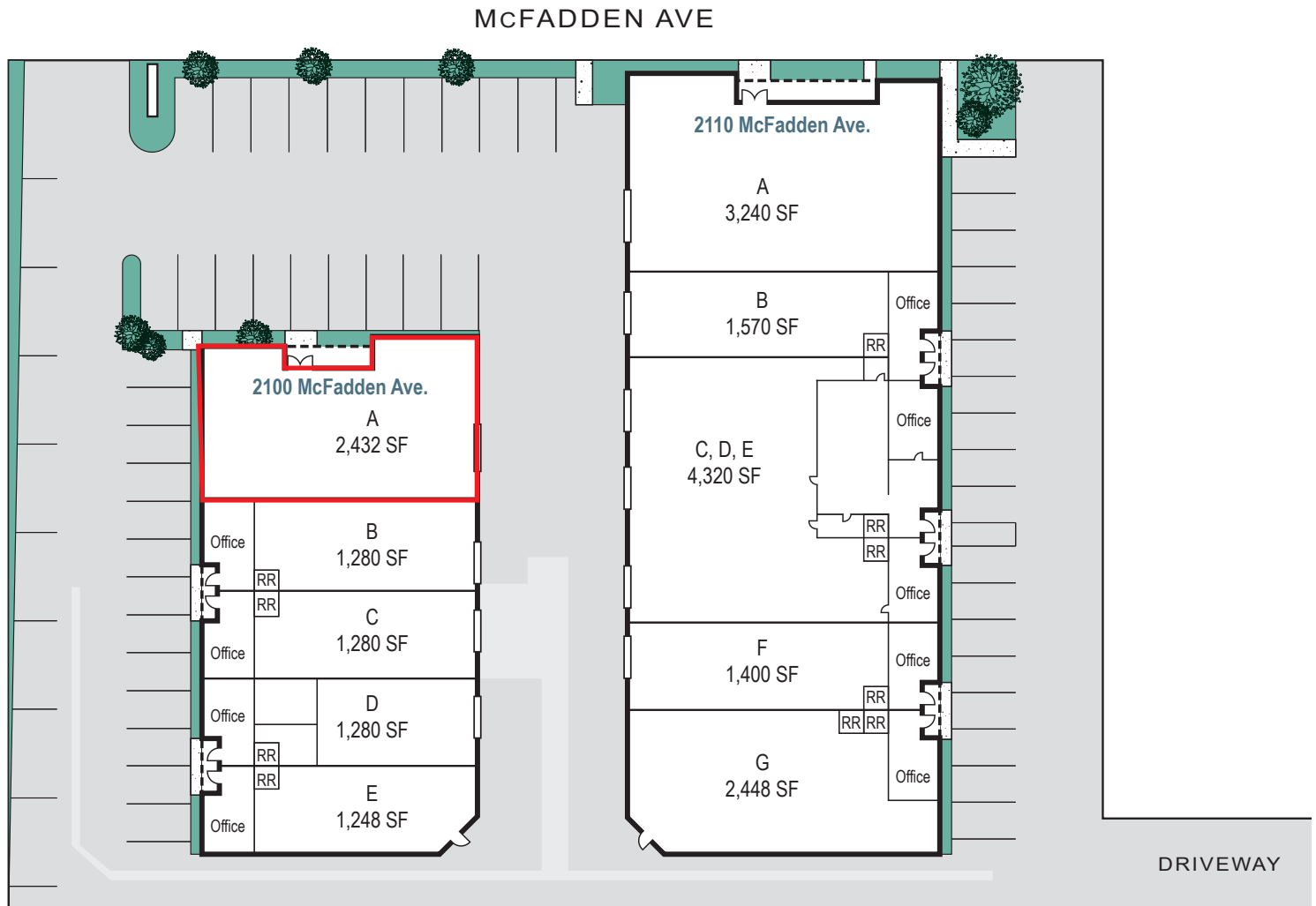
2400 E. Katella Ave., Suite 750
Anaheim, CA 92806
714.978.7880 • 714.978.9431 Fax
www.VoitCo.com

FOR LEASE

AVAILABILITY

2100-2110 E. MCFADDEN AVE. | SANTA ANA | CA | 92705

SITE PLAN



HAYDEN SOCCI, SIOR, CCIM

Senior Vice President | Partner

(714) 935-2379

hsocci@voitco.com

License #01705038

Voit

REAL ESTATE SERVICES

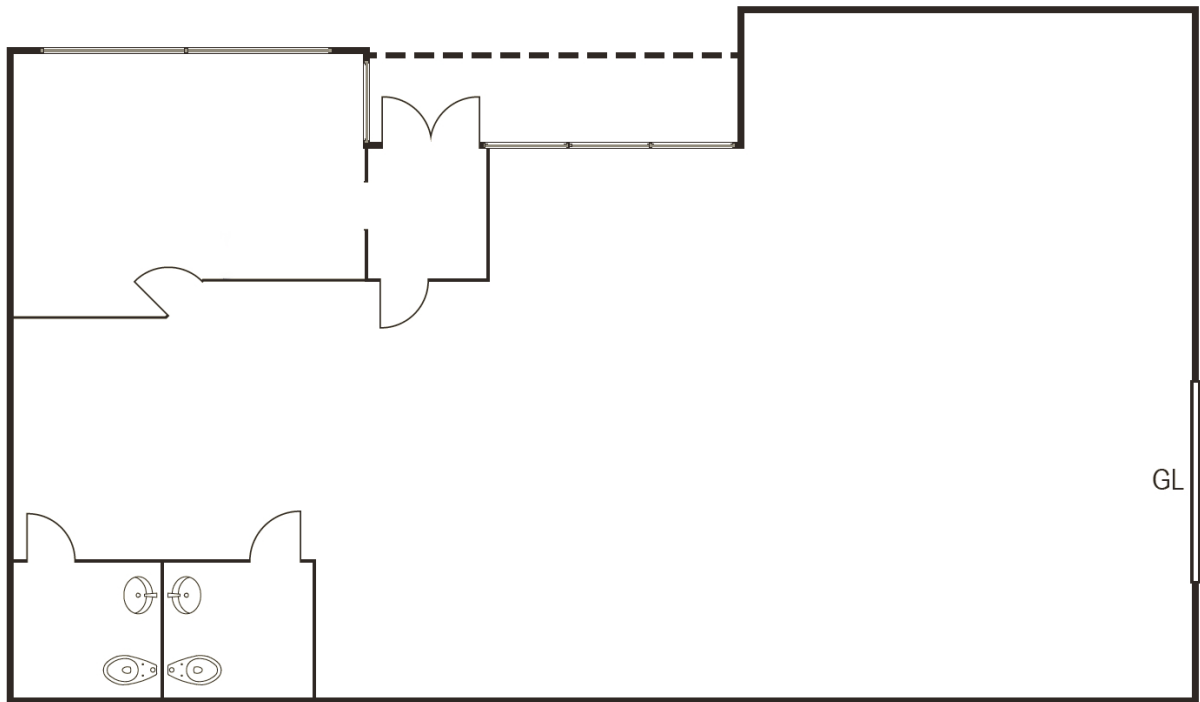
2400 E. Katella Ave., Suite 750
Anaheim, CA 92806
714.978.7880 • 714.978.9431 Fax
www.VoitCo.com

FOR LEASE

AVAILABILITY

2100-2110 E. MCFADDEN AVE. | SANTA ANA | CA | 92705

FLOOR PLAN - 2100 E. McFadden Ave., Suite A



*Please note floor plan is approximate and not to scale.

HAYDEN SOCCI, SIOR, CCIM

Senior Vice President | Partner

(714) 935-2379

hsocci@voitco.com

License #01705038

Voit

REAL ESTATE SERVICES

2400 E. Katella Ave., Suite 750
Anaheim, CA 92806
714.978.7880 • 714.978.9431 Fax
www.VoitCo.com