

THE 300 - BANK OF AMERICA TOWER



300 S. Harbor Blvd. | Anaheim

Newly Renovated Building

Creative/Office For Lease

300HARBOR.COM



Creative and General Office Suites Available

Building Summary

- Currently a 10-story, 121,825 office building with a rare opportunity for a build-to-suit 11th floor!!
- Standard parking available at a ratio of 4/1,000 sf (potential to expand)
- On-site management and 24/7 security
- Features high speed internet connections over fiber networks
- Numerous walkable amenities including restaurants, banking and hotels; Center Street Promenade/ Anaheim Packing House, and much more!
- Easy Access to the 5, 91, and 57 Freeways; Disneyland within minutes.



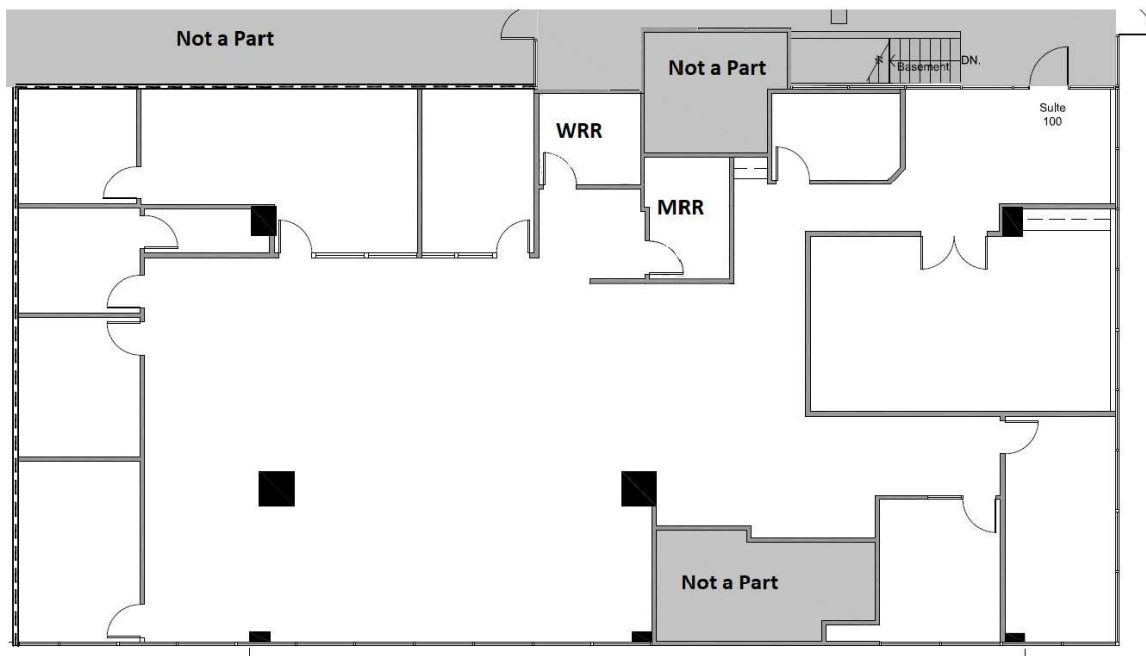
Property Overview

The 300 - BANK OF AMERICA TOWER of Anaheim is a 10-story 121,825 square foot corporate office building which offers excellent views of the historic downtown Anaheim area, Disneyland, and surrounding cities. With immediate access to the 5, 91, and 57 Freeways, The 300 is surrounded by numerous amenities including Disneyland, Downtown Anaheim, Anaheim Marketplace, and the Anaheim Packing District (Packing House).

The building offers a spectrum of creative office and general office suites and layouts to suit your businesses' needs. Additionally, The 300 offers a once in a lifetime build-to-suit 11th story with 360 views and an extensive glass line.

THE 300 - BANK OF AMERICA TOWER

Floor Plan- Suite 100
+/- 5,463 SQFT



Exclusive Agents

MARSHAL VOGT

Principal
714.564.7117
mvogt@lee-associates.com
CalDRE #01519213

JONMARK FABIANO

Principal
714.564.7167
jfabiano@lee-associates.com
CalDRE #1250488

JAIMESON HEARNE

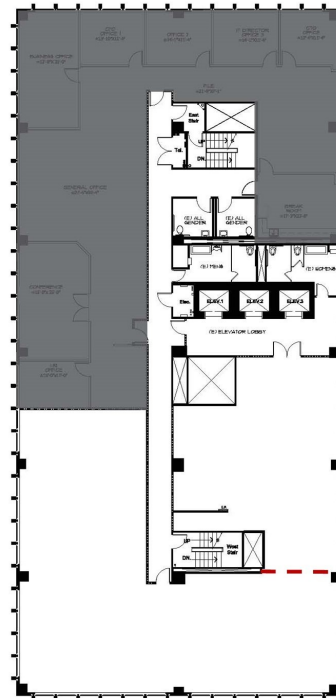
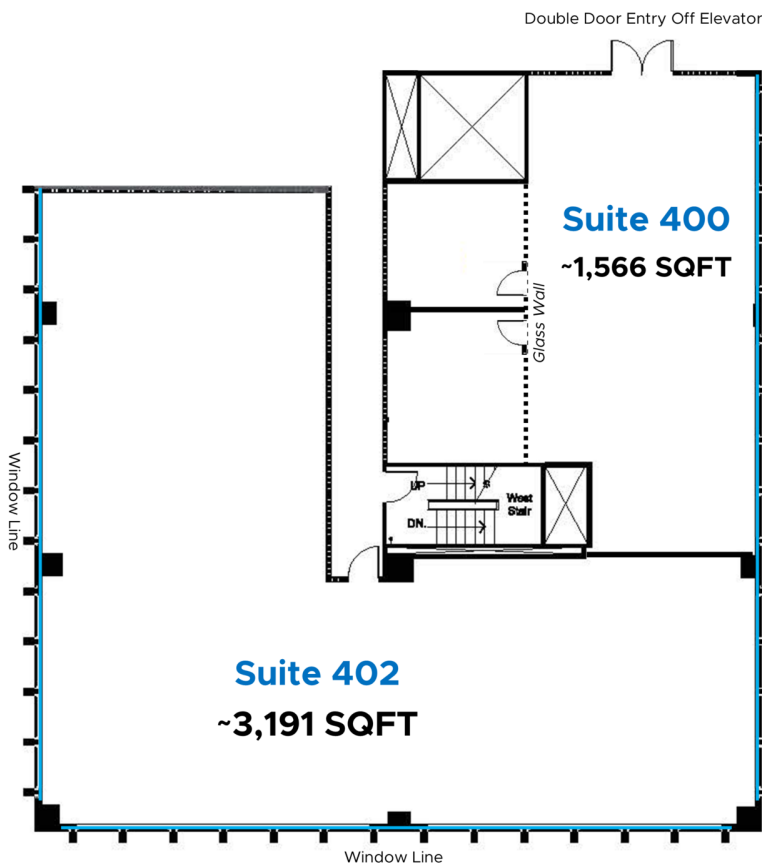
Principal
714.564.7146
jhearne@lee-associates.com
CalDRE #01925107



THE 300 - BANK OF AMERICA TOWER

Floor Plan- Suite 400/410

~1,566 / ~3,191 SQFT (Contiguous)



Exclusive Agents

MARSHAL VOGT

Principal
714.564.7117
mvogt@lee-associates.com
CalDRE #01519213

JONMARK FABIANO

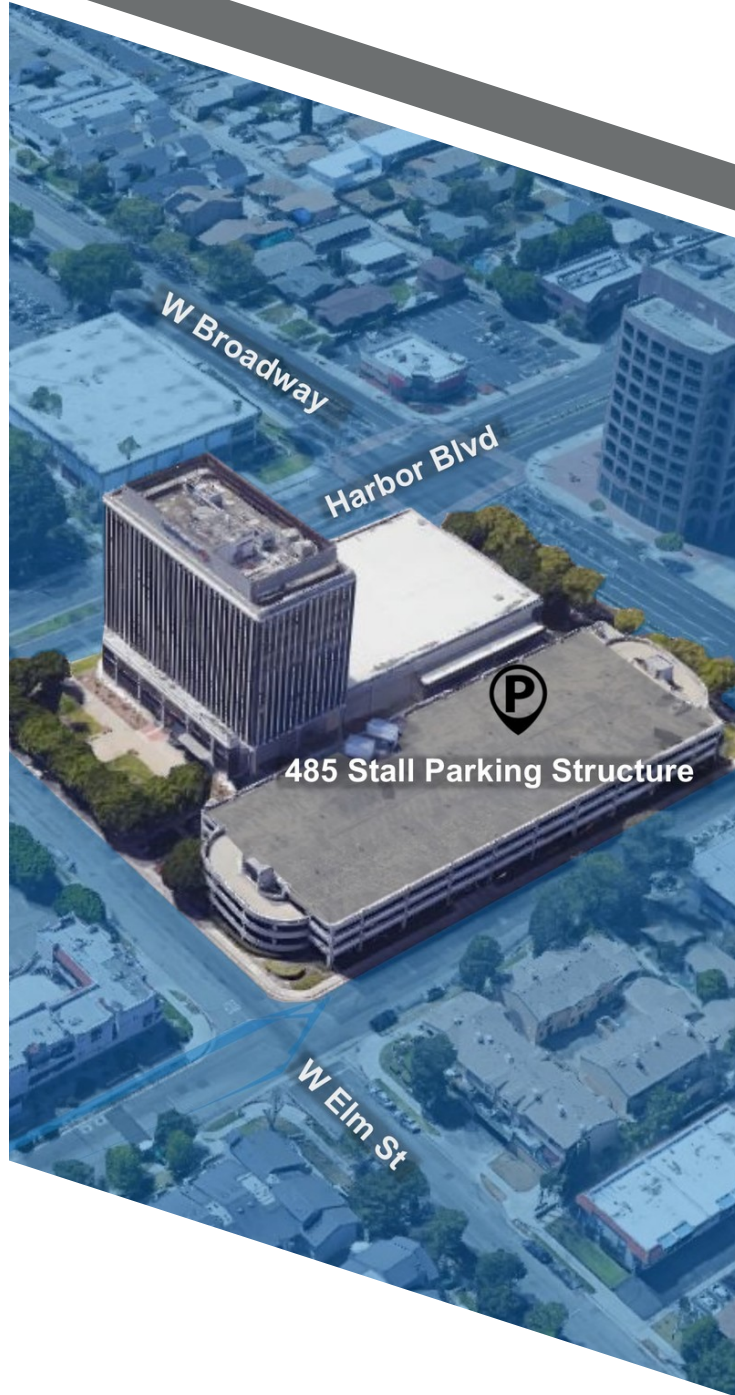
Principal
714.564.7167
jfabiano@lee-associates.com
CalDRE #1250488

JAIMESON HEARNE

Principal
714.564.7146
jhearne@lee-associates.com
CalDRE #01925107



THE 300 - BANK OF AMERICA TOWER



Exclusive Agents

MARSHAL VOGT

Principal
714.564.7117
mvogt@lee-associates.com
CalDRE #01519213

JONMARK FABIANO

Principal
714.564.7167
jfabiano@lee-associates.com
CalDRE #1250488

JAIMESON HEARNE

Principal
714.564.7146
jhearne@lee-associates.com
CalDRE #01925107

