

# 2211 MICHELSON

Irvine, CA



*Elegant, efficient and Californian, this 12-story jewel box office building is sheathed in architectural white metal panels and high-performance silver vision glass, expressing sophistication on the skyline.*



HOME

OVERVIEW

AVAILABILITIES

LOCATION

FLOOR PLANS

SITE PLAN

AREA AMENITIES

2211MICHELSON.COM

**Bob Thagard**  
Executive Managing Director  
O +1 949 372 4909  
C +1 949 422 2799  
bob.thagard@cushwake.com  
LIC #00891244

**Ali Hawthorne**  
Senior Associate  
O +1 949 372 4890  
C +1 949 292 9696  
alexandra.hawthorne@cushwake.com  
LIC #01905414



Cushman & Wakefield Copyright 2017. The information contained herein was lawfully obtained from sources we consider reliable. Cushman & Wakefield is not responsible and expressly disclaims all liability, for errors, omissions, prior sales, withdrawal from the market or change in price. Seller (or Lessor, as the case may be) and broker make no representation as to the environmental condition of the property and recommend Purchaser's (or Lessee's) independent investigation.

[www.cushmanwakefield.com](http://www.cushmanwakefield.com)



Main Atrium Lobby

## Property Highlights

- State-of-the-art building systems
- Optimal bay depths
- LEED certified and awarded an Energy Star label for its operating efficiency
- Column-free lease space
- Efficient, rectangular floor plates
- Innovating wastewater and irrigation technologies
- Adjacent six-level parking structure

## Building Features

- Stone lobby interior finishes consist of white marble, back painted glass and a red travertine stone feature wall
- Five-foot mullion spacing
- Nine-foot ceiling height
- Full length mahogany doors
- National-caliber architecture and spectacular view
- Adjacent to recently renovated retail center, TRADE, which features a variety of restaurants and amenities.
- Located two blocks east of John Wayne Airport with immediate access to the 405, 55 and the 73 Freeways
- Pedestrian access to nearby hotel, restaurants and fitness amenities

**Bob Thagard**  
Executive Managing Director  
O +1 949 372 4909  
C +1 949 422 2799  
bob.thagard@cushwake.com  
LIC #00891244

**Ali Hawthorne**  
Senior Associate  
O +1 949 372 4890  
C +1 949 292 9696  
alexandra.hawthorne@cushwake.com  
LIC #01905414



## OFFICE SPACE AVAILABILITY (Update 10/25/17)

SUITE	SIZE (RSF)	SPACE DETAILS
150	2,517	Prominent ground floor location, double door entry, reception, 2 interior offices and open area for workstations, ideal for banking use.
500	10,661	Double door entry off elevator lobby, prominent reception area, 15 perimeter offices, 2 interior offices, conference room, kitchen, pantry, lounge area, copy/file room, and open area for workstations.
650	6,130	Double door entry off elevator lobby, reception, 7 perimeter offices, conference room, break room, storage room, and open area for workstations. Contiguous with suite 660 - 8,228 SF.
660	2,158	Double door entry, reception, 3 perimeter offices, break room, and open area for workstations. Contiguous with suite 650 - 8,228 SF.
840	4,968	Double door entry, reception, 1 perimeter office, 4 interior offices, kitchen, 2 conference rooms, server room, copy/file room and open area for workstations.
1160	1,925	<b>Move in ready Spec Suite.</b> Reception, 3 perimeter offices, conference room, kitchen, and open area for workstations. Call to show.

**Bob Thagard**  
 Executive Managing Director  
 O +1 949 372 4909  
 C +1 949 422 2799  
 bob.thagard@cushwake.com  
 LIC #00891244

**Ali Hawthorne**  
 Senior Associate  
 O +1 949 372 4890  
 C +1 949 292 9696  
 alexandra.hawthorne@cushwake.com  
 LIC #01905414

# 2211 MICHELSON

Irvine, CA



HOME / OVERVIEW / AVAILABILITIES / **LOCATION** / FLOOR PLANS / SITE PLAN / AREA AMENITIES / 2211MICHELSON.COM

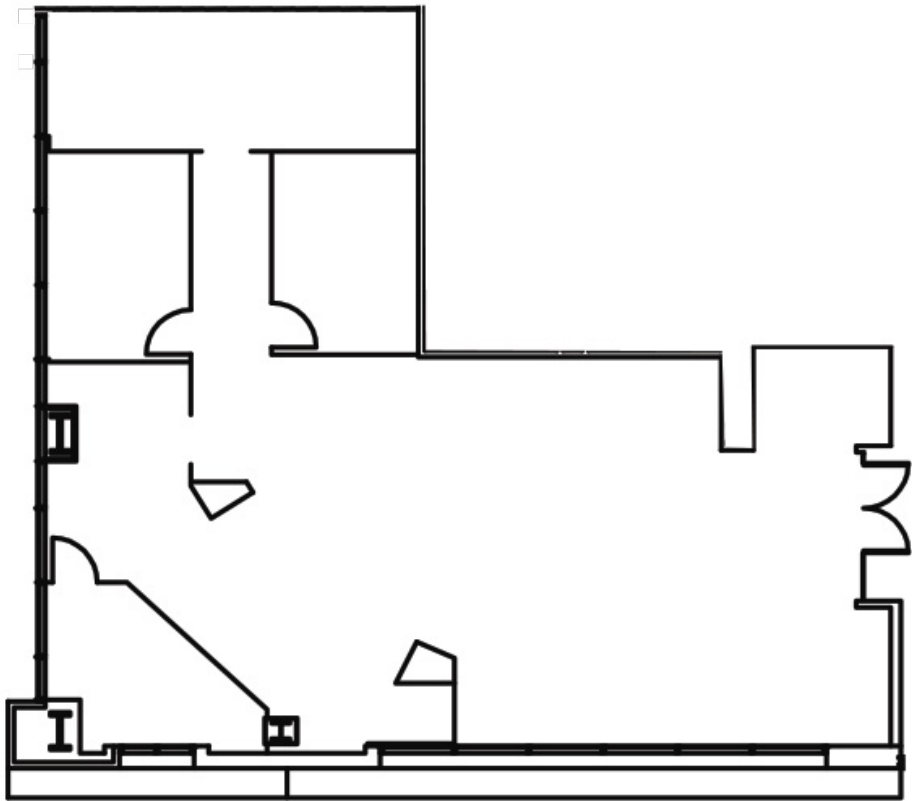


**Bob Thagard**  
Executive Managing Director  
O +1 949 372 4909  
C +1 949 422 2799  
bob.thagard@cushwake.com  
LIC #00891244

**Ali Hawthorne**  
Senior Associate  
O +1 949 372 4890  
C +1 949 292 9696  
alexandra.hawthorne@cushwake.com  
LIC #01905414

Cushman & Wakefield Copyright 2017. The information contained herein was lawfully obtained from sources we consider reliable. Cushman & Wakefield is not responsible and expressly disclaims all liability, for errors, omissions, prior sales, withdrawal from the market or change in price. Seller (or Lessor, as the case may be) and broker make no representation as to the environmental condition of the property and recommend Purchaser's (or Lessee's) independent investigation. environmental condition of the property and recommend Purchaser's (or Lessee's) independent investigation.

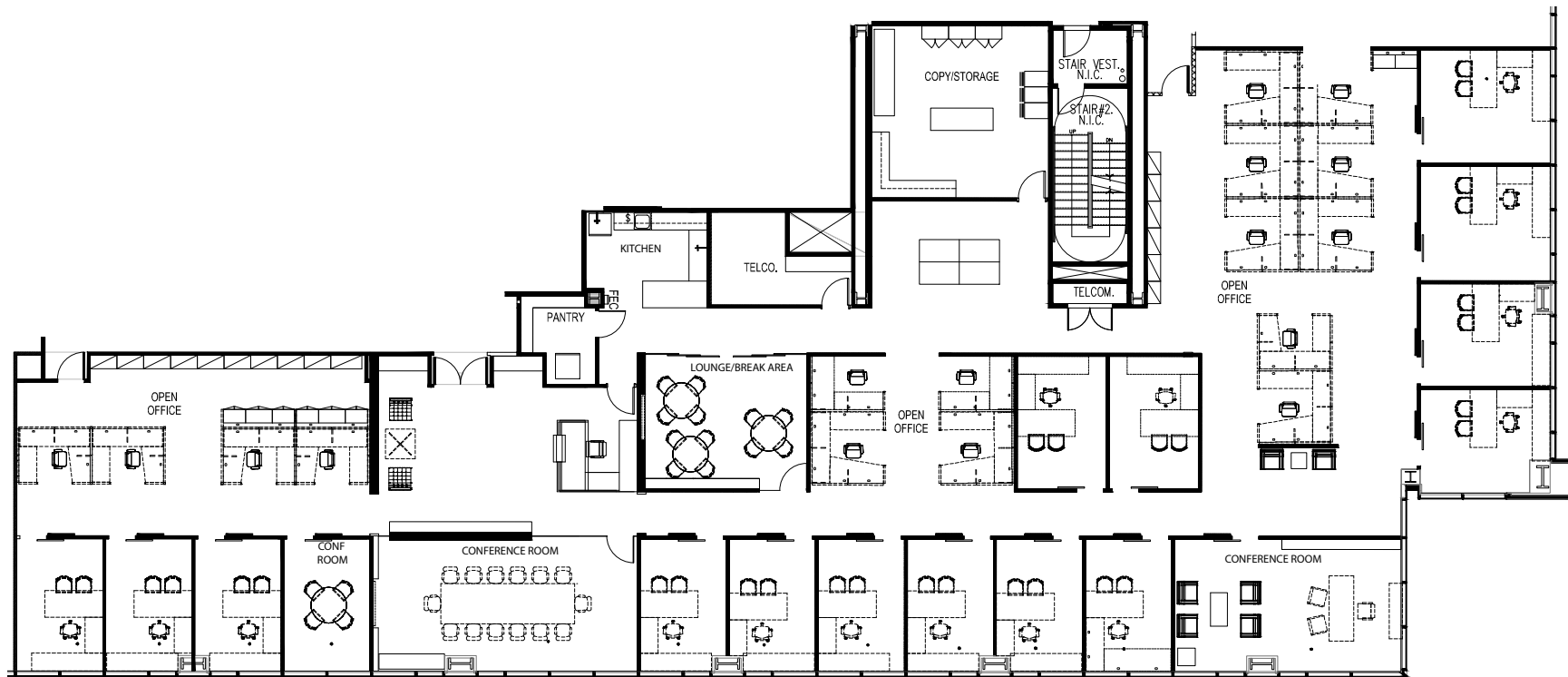
SUITE	SIZE (RSF)	DESCRIPTION
150	2,517	Prominent ground floor location, double door entry, reception, 2 interior offices, and open area



**Bob Thagard**  
Executive Managing Director  
O +1 949 372 4909  
C +1 949 422 2799  
bob.thagard@cushwake.com  
LIC #00891244

**Ali Hawthorne**  
Senior Associate  
O +1 949 372 4890  
C +1 949 292 9696  
alexandra.hawthorne@cushwake.com  
LIC #01905414

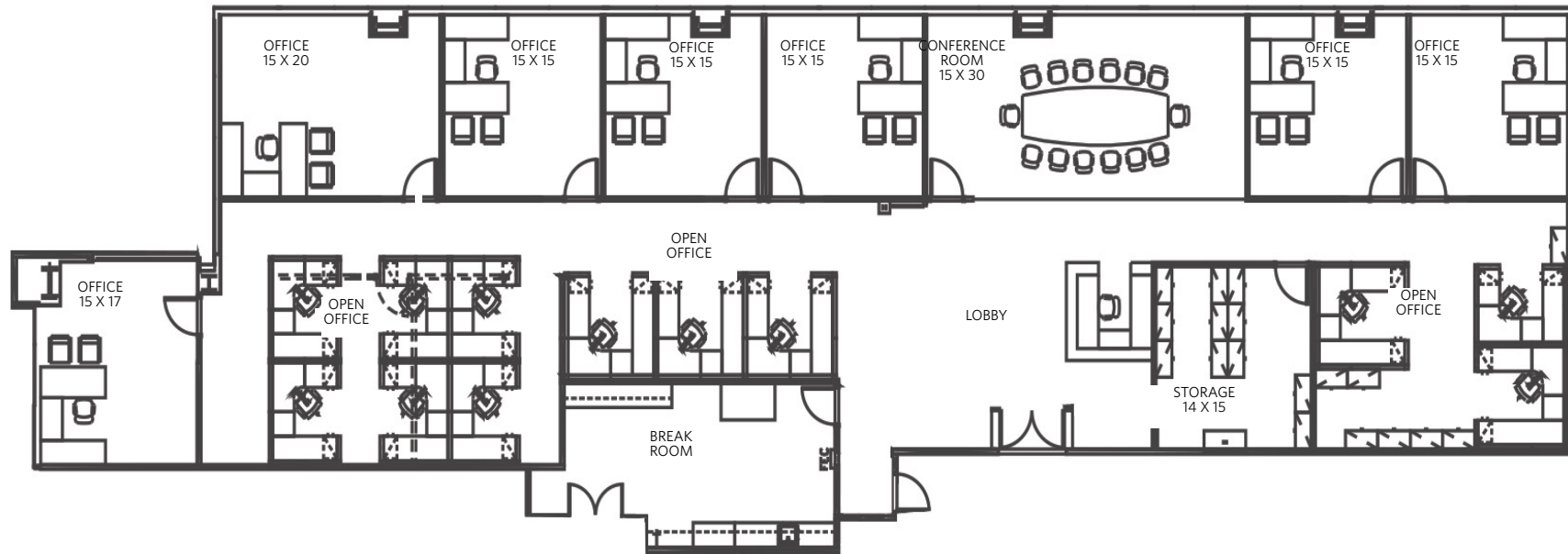
SUITE	SIZE (RSF)	DESCRIPTION
500	10,661	Double door entry off elevator lobby, prominent reception area, 15 perimeter offices, 2 interior offices, conference room, kitchen, pantry, lounge area, copy/file room, and open area for workstations.



**Bob Thagard**  
 Executive Managing Director  
 O +1 949 372 4909  
 C +1 949 422 2799  
 bob.thagard@cushwake.com  
 LIC #00891244

**Ali Hawthorne**  
 Senior Associate  
 O +1 949 372 4890  
 C +1 949 292 9696  
 alexandra.hawthorne@cushwake.com  
 LIC #01905414

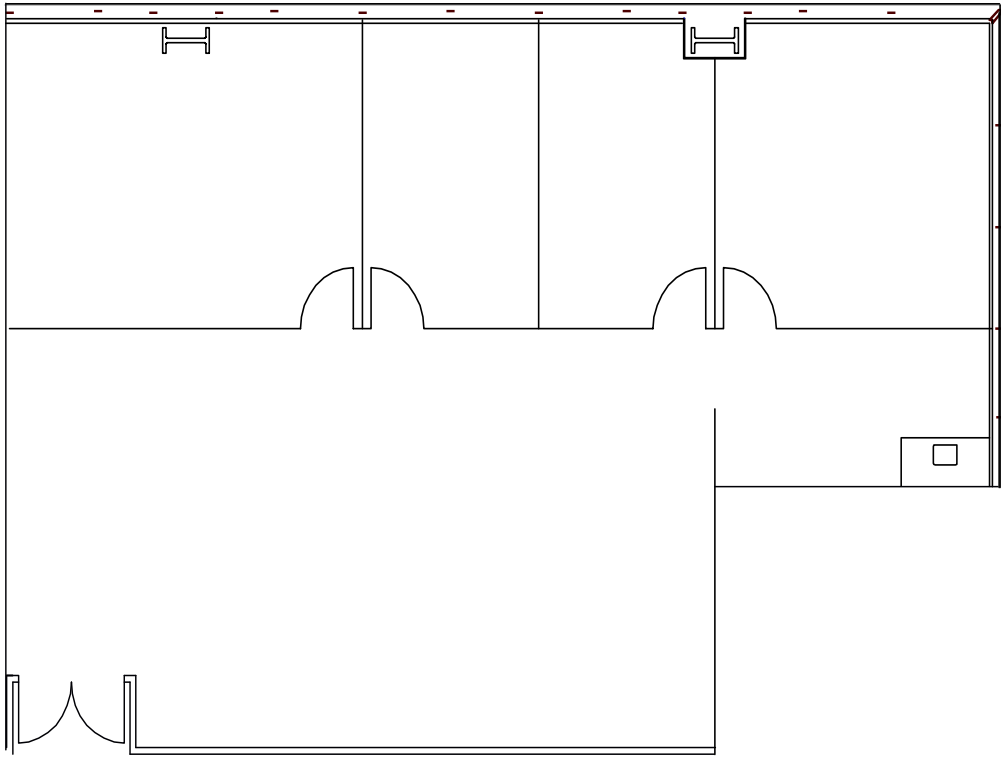
SUITE	SIZE (RSF)	DESCRIPTION
650	6,130	Double door entry off elevator lobby, reception, 7 perimeter offices, conference room, break room, storage room, and open area for workstations. Contiguous with suite 660 - 8,228 SF.



**Bob Thagard**  
 Executive Managing Director  
 O +1 949 372 4909  
 C +1 949 422 2799  
 bob.thagard@cushwake.com  
 LIC #00891244

**Ali Hawthorne**  
 Senior Associate  
 O +1 949 372 4890  
 C +1 949 292 9696  
 alexandra.hawthorne@cushwake.com  
 LIC #01905414

SUITE	SIZE (RSF)	DESCRIPTION
660	2,158	Double door entry, reception, 3 perimeter offices, break room, and open area for workstations. Contiguous with suite 650 - 8,228 SF.

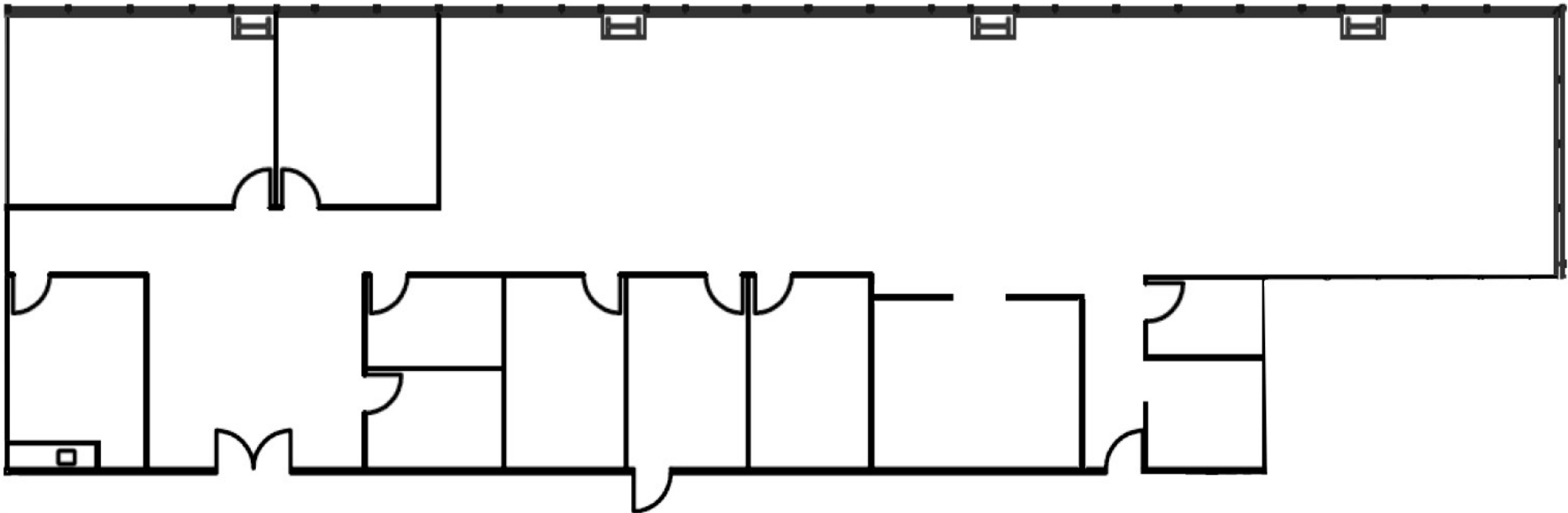


**Bob Thagard**  
Executive Managing Director  
O +1 949 372 4909  
C +1 949 422 2799  
bob.thagard@cushwake.com  
LIC #00891244

**Ali Hawthorne**  
Senior Associate  
O +1 949 372 4890  
C +1 949 292 9696  
alexandra.hawthorne@cushwake.com  
LIC #01905414



SUITE	SIZE (RSF)	DESCRIPTION
840	4,968	Double door entry, reception, 1 perimeter office, 4 interior offices, kitchen, 2 conference rooms, server room, copy/file room and open area for workstations.



**Bob Thagard**  
Executive Managing Director  
O +1 949 372 4909  
C +1 949 422 2799  
bob.thagard@cushwake.com  
LIC #00891244

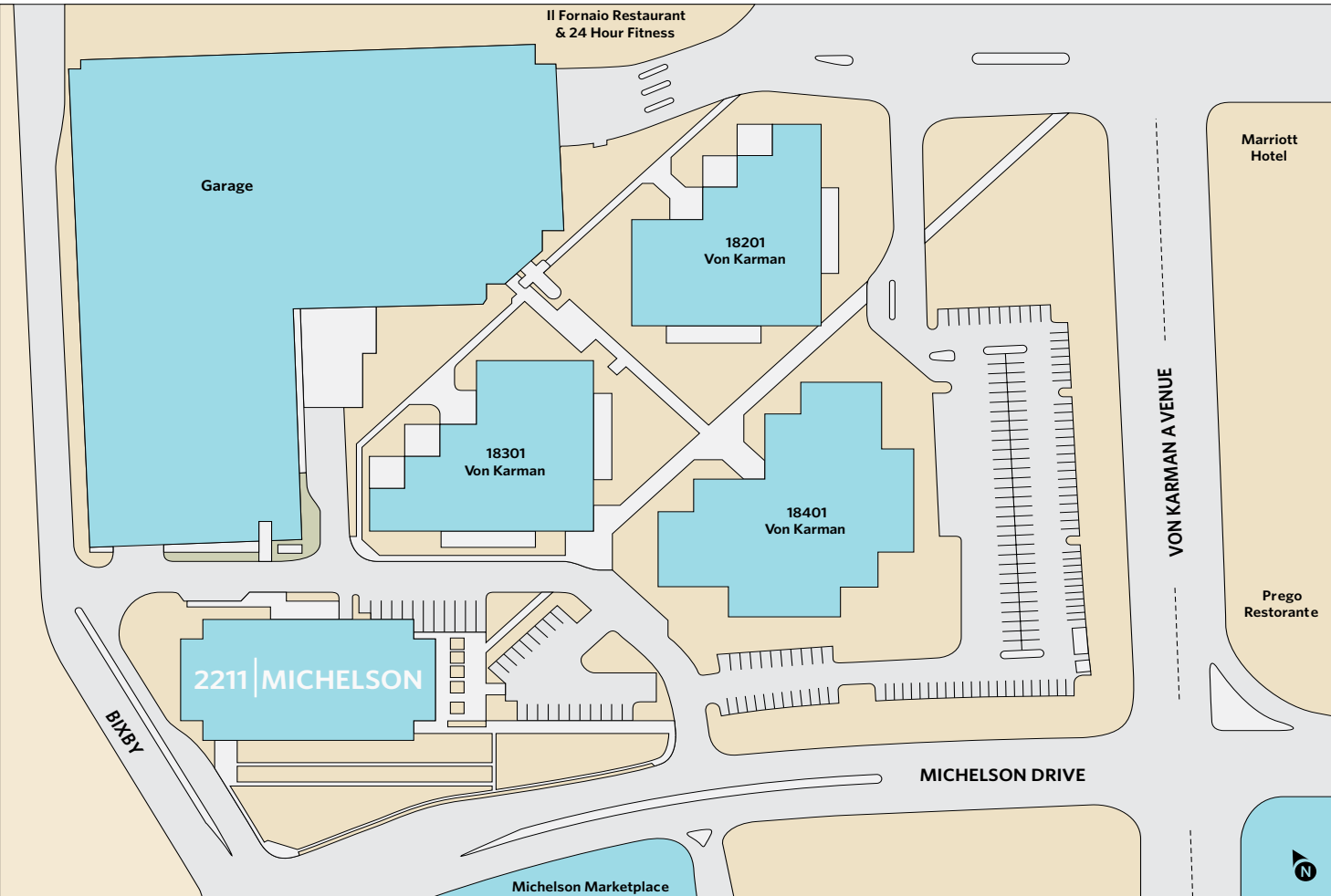
**Ali Hawthorne**  
Senior Associate  
O +1 949 372 4890  
C +1 949 292 9696  
alexandra.hawthorne@cushwake.com  
LIC #01905414

SUITE	SIZE (RSF)	DESCRIPTION
1160	1,925	<b>Move in ready Spec Suite.</b> Reception, 3 perimeter offices, conference room, kitchen and open area for workstations. Call to show.



**Bob Thagard**  
 Executive Managing Director  
 O +1 949 372 4909  
 C +1 949 422 2799  
 bob.thagard@cushwake.com  
 LIC #00891244

**Ali Hawthorne**  
 Senior Associate  
 O +1 949 372 4890  
 C +1 949 292 9696  
 alexandra.hawthorne@cushwake.com  
 LIC #01905414



**Bob Thagard**  
Executive Managing Director  
O +1 949 372 4909  
C +1 949 422 2799  
bob.thagard@cushwake.com  
LIC #00891244

**Ali Hawthorne**  
Senior Associate  
O +1 949 372 4890  
C +1 949 292 9696  
alexandra.hawthorne@cushwake.com  
LIC #01905414

# 2211 MICHELSON Irvine, CA



HOME / OVERVIEW / AVAILABILITIES / LOCATION / FLOOR PLANS / SITE PLAN / AREA AMENITIES / 2211MICHELSON.COM



24 HOUR FITNESS



IL FORNAIO



JOHN WAYNE AIRPORT



SOUTH COAST PLAZA



TRADE FOOD HALL & RETAIL CENTER



FASHION ISLAND

Bob Thagard  
Executive Managing Director  
O +1 949 372 4909  
C +1 949 422 2799  
bob.thagard@cushwake.com  
LIC #00891244

Ali Hawthorne  
Senior Associate  
O +1 949 372 4890  
C +1 949 292 9696  
alexandra.hawthorne@cushwake.com  
LIC #01905414

Cushman & Wakefield Copyright 2017. The information contained herein was lawfully obtained from sources we consider reliable. Cushman & Wakefield is not responsible and expressly disclaims all liability, for errors, omissions, prior sales, withdrawal from the market or change in price. Seller (or Lessor, as the case may be) and broker make no representation as to the environmental condition of the property and recommend Purchaser's (or Lessee's) independent investigation.

www.cushmanwakefield.com