

# FOR LEASE

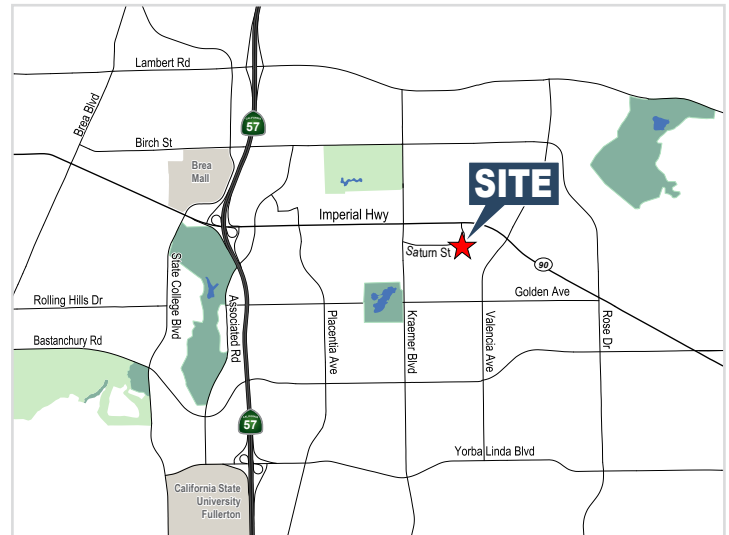
## COUNTRY CLUB INDUSTRIAL PARK

2950-2980 Saturn Street, Brea, CA



### PROPERTY DETAILS

- No CAM Charges (Landlord Pays for Water and Trash)
- Fully Fire Sprinklered Units
- ±16' Warehouse Clearance
- Ground Level Loading in all Units
- Abundant Surface Free Parking
- Professionally Managed Business Park
- Close Proximity to Brea Regional Mall, 2 Retail Power Centers, 7 Hotels and 45 Restaurants



For More Information or to Schedule a Tour Please Contact:



**JASON DIROCCO**

714.935.2305

JDiRocco@voitco.com

Lic. #01842301

## Voit

REAL ESTATE SERVICES

2400 E. Katella Avenue, Suite 750, Anaheim, CA 92805 | 714.978-7880 • 714.978.9431 Fax

[www.VoitCo.com](http://www.VoitCo.com)



# FOR LEASE

## COUNTRY CLUB INDUSTRIAL PARK

2950-2980 Saturn Street, Brea, CA



### AVAILABILITIES

Address	Suite	Unit SF	Office SF	Warehouse SF	GL	Price	Comments
2960 Saturn Street	G	± 1,300	± 312	± 988	1	\$1.75	1 Office, 1 Restroom

**\*NO CAM FEES**

For More Information or to Schedule a Tour Please Contact:



**JASON DIROCCO**  
714.935.2305  
JDiRocco@voitco.com  
Lic. #01842301

**Voit**  
REAL ESTATE SERVICES