

FOR LEASE

1161 N. Cosby Way, Anaheim, CA 92806

Address	Suite	Total Size ¹	Asking Rate	Monthly Rent	Comments
1161 Cosby Way Anaheim	J	1,080 Sq. Ft.	\$1.10 Mod. Gross	\$1,188.00	Private office, restroom and warehouse with ground level loading door.

¹Approximate total and office square footage

Hayden Socci, CCIM

Senior Vice President | Partner

714.935.2379

hsocci@voitco.com

Lic #01705038

Voit

REAL ESTATE SERVICES

2400 E. Katella Ave., Ste. 750, Anaheim, CA 92806 • 714.978.7880 • 714.276-0664 Fax • Lic #01661785 | www.voitco.com

The information contained herein has been obtained from sources we deem reliable. While we have no reason to doubt its accuracy, we do not guarantee it. ©2020 Voit Real Estate Services, Inc. All Rights Reserved. Real People. Real Solutions.™ is a trademark of Voit Real Estate Services.

FOR LEASE

1161 N. Cosby Way, Anaheim, CA 92806

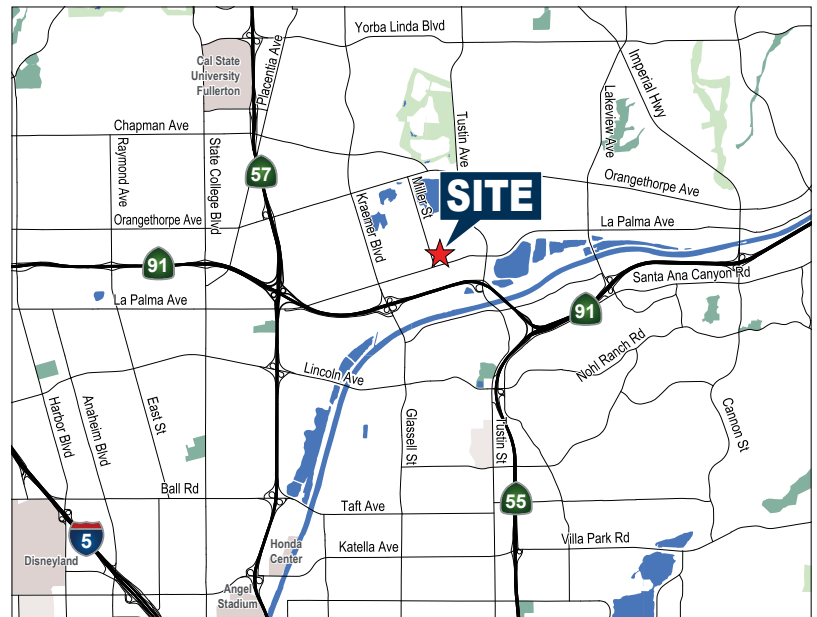
Voit

REAL ESTATE SERVICES



FEATURES

- $\pm 1,080$ Square Foot Units
- Ground Level Loading Door(s)
- 16' Warehouse Clearance
- Excellent Anaheim Location
- Great Freeway Access
- Shop Restroom
- No CAM (Common Area Maintenance) Fee's
- Excellent Access to the 91, 57, & 55 Freeways



For more information, please contact:

Hayden Socci, CCIM

Senior Vice President | Partner

714.935.2379

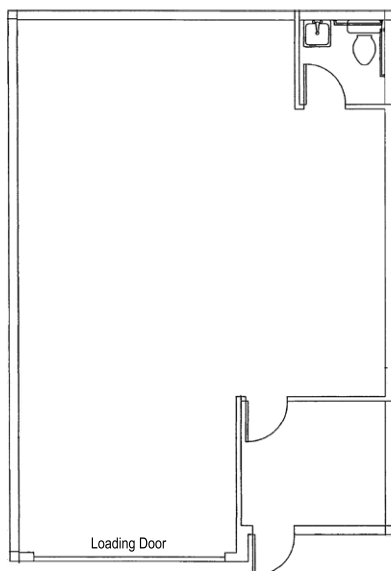
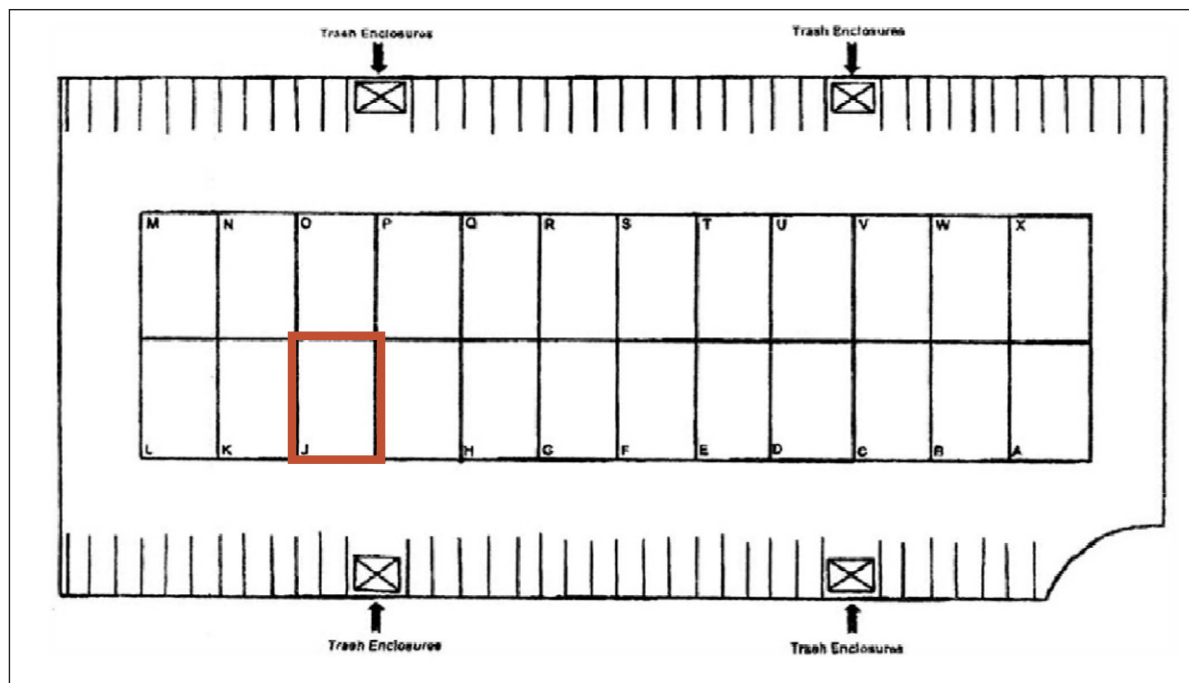
hsocci@voitco.com

Lic #01705038

FOR LEASE

1161 N. Cosby Way, Anaheim, CA 92806

Suite J - 1,080 Sq. Ft.



Please note floor plan not to scale.

Hayden Socci, CCIM

Senior Vice President | Partner

714.935.2379

hsocci@voitco.com

Lic #01705038

Voit

REAL ESTATE SERVICES

2400 E. Katella Ave., Ste. 750, Anaheim, CA 92806 • 714.978.7880 • 714.276-0664 Fax • Lic #01991785 | www.voitco.com

The information contained herein has been obtained from sources we deem reliable. While we have no reason to doubt its accuracy, we do not guarantee it. ©2020 Voit Real Estate Services, Inc. All Rights Reserved. Real People. Real Solutions.™ is a trademark of Voit Real Estate Services.