

AVAILABLE FOR LEASE

LAKE FOREST PROFESSIONAL BUILDING
23161 LAKE CENTER DRIVE • LAKE FOREST

YOUR NAME HERE!!

**ONE TIME
PROMOTIONAL RATE
OF \$1.95 FSG!**

**WE WANT THE
NEXT DEAL!!**

 **LEE &
ASSOCIATES**
COMMERCIAL REAL ESTATE SERVICE

ERIC DARNELL
Senior Vice President
CalDRE 01888743
949.790.3157
edarnell@leeirvine.com

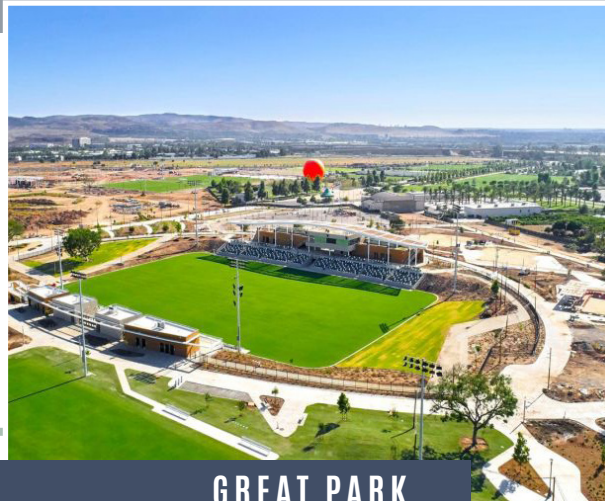
JAKE FISCHBECK
Associate
CalDRE 02090693
949.790.3118
jfischbeck@leeirvine.com

PROPERTY OVERVIEW



PROPERTY HIGHLIGHTS

- High Image Office Building with Ample Parking
- Immediate Access to the 5, 405 & 133 Freeways
- Very Close Proximity to Irvine Spectrum Center
- Building Top 5 Freeway Signage Available
- Event Sized Common Area Kitchen/Break Room
- Recently Renovated in 2018
- Elevator Served
- Suite 200: Fully Furnished
- Lease Rate: \$2.25 FSG



GREAT PARK



LAKE FOREST GATEWAY

EXTERIOR PHOTOS



FORMAL LOBBY



FREEWAY FRONTAGE



EASY FWY ACCESS



INTERIOR PHOTOS



FORMAL LOBBY



AVAILABLE NOW



COMMON TRAINING CENTER



COMMON KITCHEN

INTERIOR PHOTOS



RECEPTION AREA



CONFERENCE ROOM

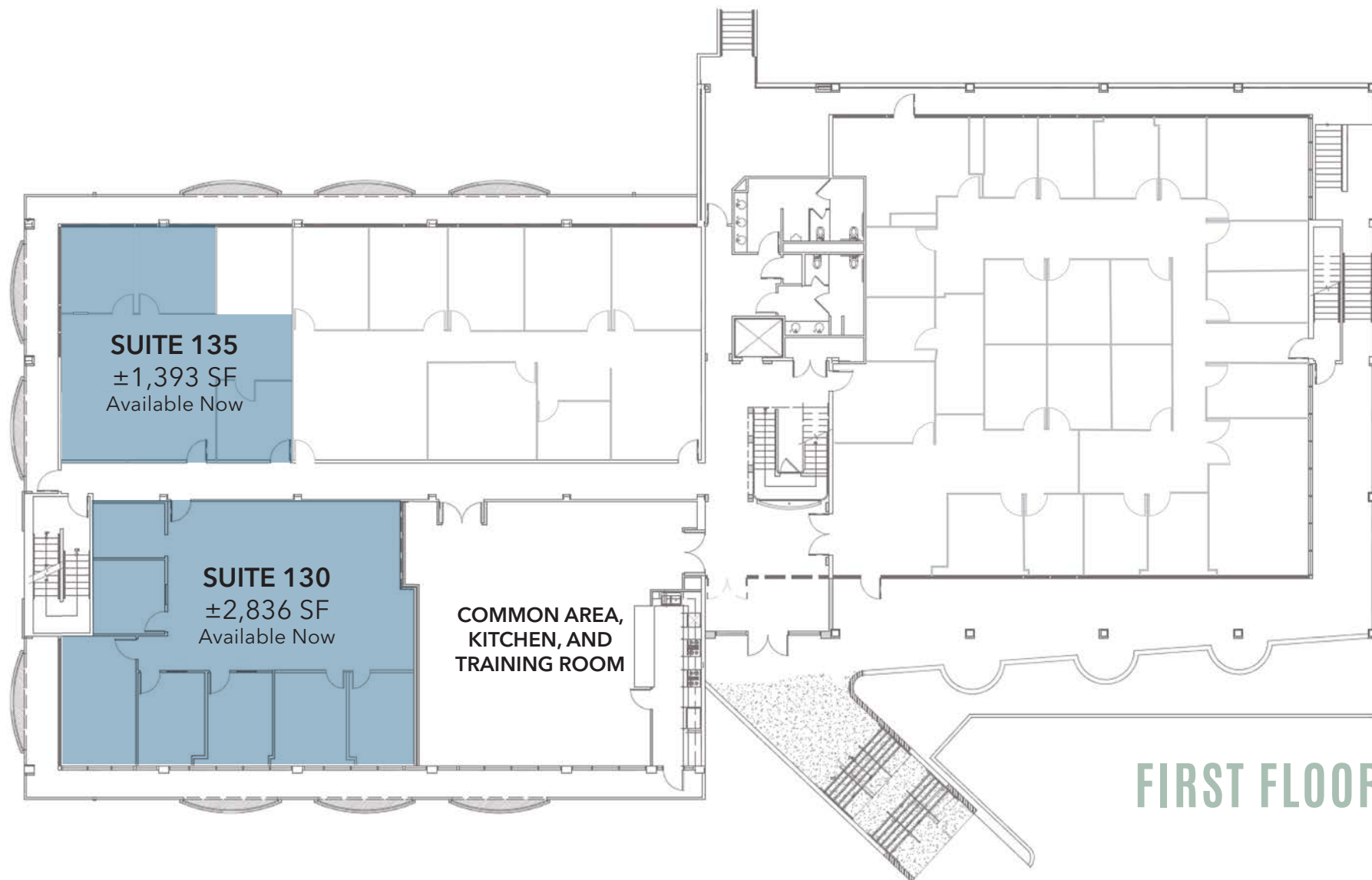


PRIVATE OFFICE

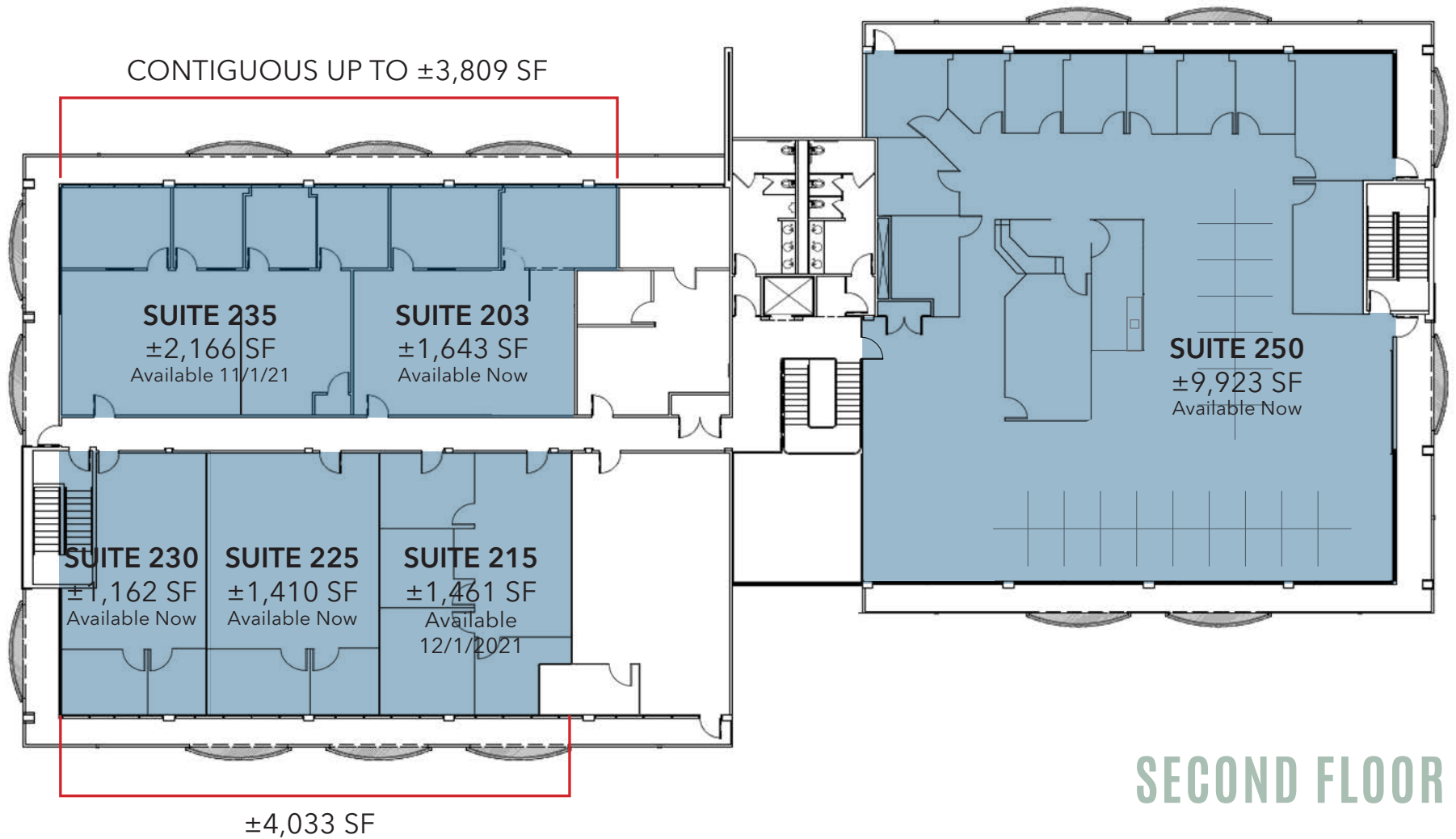


CUBICLES

FLOORPLAN



FLOORPLAN



SECOND FLOOR