

# FOOTHILL PLAZA

## AVAILABILITY

27422 & 27442 PORTOLA PARKWAY | FOOTHILL RANCH | CALIFORNIA

ADDRESS	RSF	COMMENTS
27422 PORTOLA PARKWAY, SUITE 200	19,294	AVAILABLE NOW. BEAUTIFUL VIEWS OF THE FOOTHILLS. HIGH END LOBBY AND RECEPTION AREA WITH IMPRESSIVE BOARD ROOM, PERIMETER OFFICES THROUGHOUT, KITCHEN AREAS AND OPEN AREA FOR WORKSTATIONS.
27422 PORTOLA PARKWAY, SUITE 300/320*	13,205	DOUBLE DOOR ENTRY, PRIVATE OFFICES, LARGE OPEN AREA FOR WORKSTATIONS, LARGE INTERIOR WORKROOM WITH VCT FLOORING, CONFERENCE ROOMS, KITCHEN AND IT/STORAGE ROOM.
27422 PORTOLA PARKWAY, SUITE 330/340*	8,377	PRIVATE OFFICES, LARGE OPEN AREA FOR WORKSTATIONS, KITCHEN AND IT/STORAGE ROOM.
27442 PORTOLA PARKWAY, SUITE 300	27,681	AVAILABLE NOW. FULLY FURNISHED AND READY FOR IMMEDIATE OCCUPANCY.
27442 PORTOLA PARKWAY, SUITE 175	1,784	AVAILABLE NOW. TWO PRIVATE OFFICES ON THE WINDOW LINE, KITCHEN/BREAK ROOM AND LARGE OPEN AREA FOR WORKSTATIONS.

\*27422 SUITES 300-340: 21,582 SF

### EXCLUSIVE AGENTS:

#### GREGG HALY

+1 949 725 8632

gregg.haly@cbre.com

Lic. 00937913

#### ALLISON KELLY

+1 949 725 8474

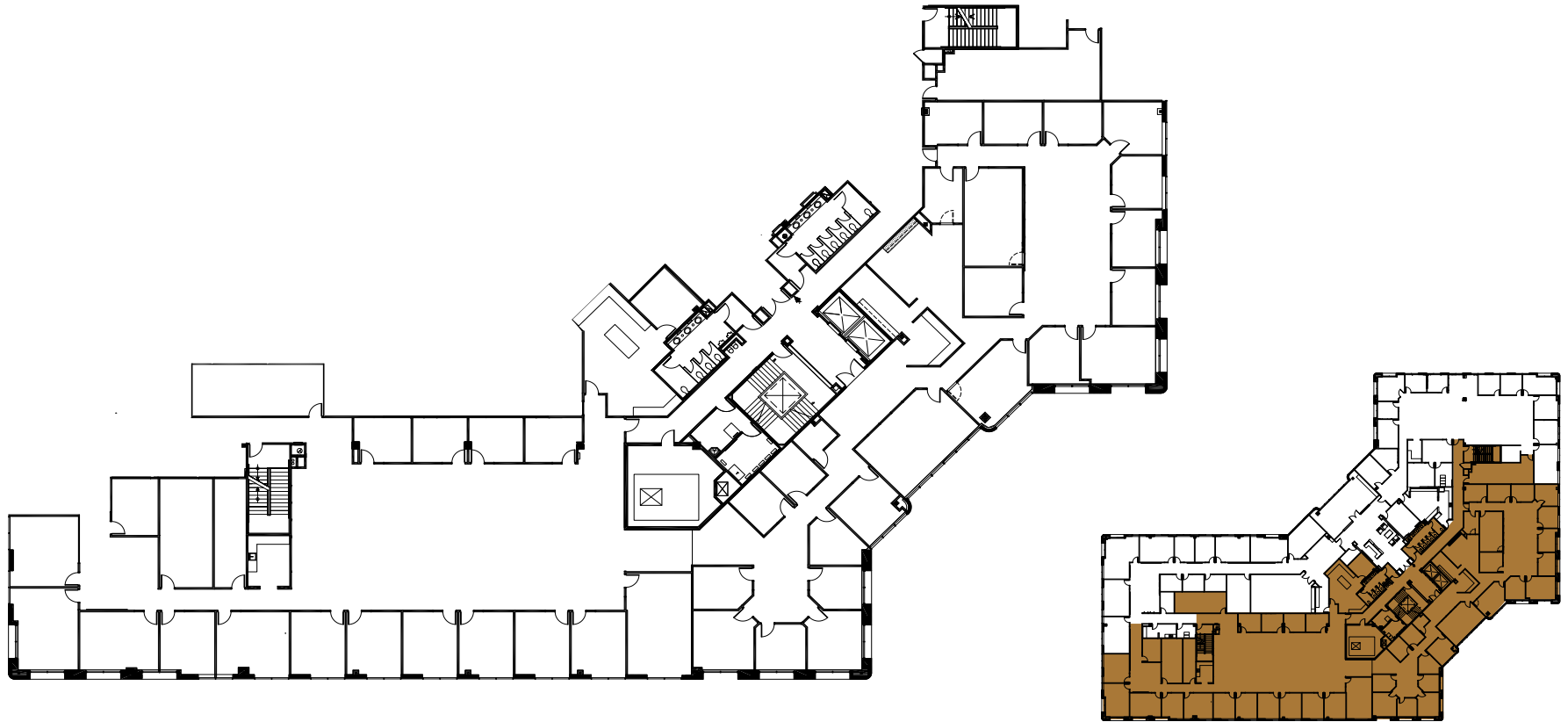
allison.kelly@cbre.com

Lic. 01417664

**CBRE**

© 2025 CBRE, Inc. All rights reserved. This information has been obtained from reliable sources but has not been verified for accuracy or completeness. CBRE, Inc. makes no guarantee, representation, or warranty and accepts no responsibility or liability for the accuracy, completeness, or reliability of the information contained herein. You should conduct a careful, independent investigation of the property and verify all information. Any reliance on this information is solely at your own risk. CBRE and the CBRE logo are service marks of CBRE, Inc. All other marks displayed on this document are the property of their respective owners, and the use of such marks does not imply any affiliation with or endorsement of CBRE. Photos herein are the property of their respective owners. Use of these images without the express written consent of the owner is prohibited.

27422 PORTOLA PARKWAY, SUITE 200  
19,294 SF



EXCLUSIVE AGENTS:

**GREGG HALY**

+1 949 725 8632

gregg.haly@cbre.com

Lic. 00937913

**ALLISON KELLY**

+1 949 725 8474

allison.kelly@cbre.com

Lic. 01417664

**CBRE**

© 2025 CBRE, Inc. All rights reserved. This information has been obtained from reliable sources but has not been verified for accuracy or completeness. CBRE, Inc. makes no guarantee, representation, or warranty and accepts no responsibility or liability for the accuracy, completeness, or reliability of the information contained herein. You should conduct a careful, independent investigation of the property and verify all information. Any reliance on this information is solely at your own risk. CBRE and the CBRE logo are service marks of CBRE, Inc. All other marks displayed on this document are the property of their respective owners, and the use of such marks does not imply any affiliation with or endorsement of CBRE. Photos herein are the property of their respective owners. Use of these images without the express written consent of the owner is prohibited.

27422 PORTOLA PARKWAY, SUITES 300  
13,205 SF



EXCLUSIVE AGENTS:

**GREGG HALY**

+1 949 725 8632

gregg.haly@cbre.com

Lic. 00937913

**ALLISON KELLY**

+1 949 725 8474

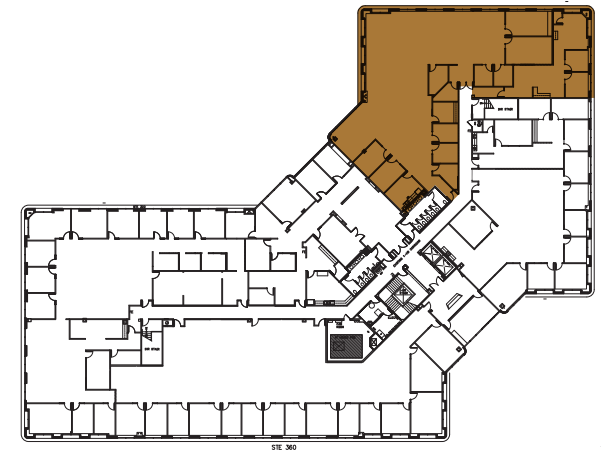
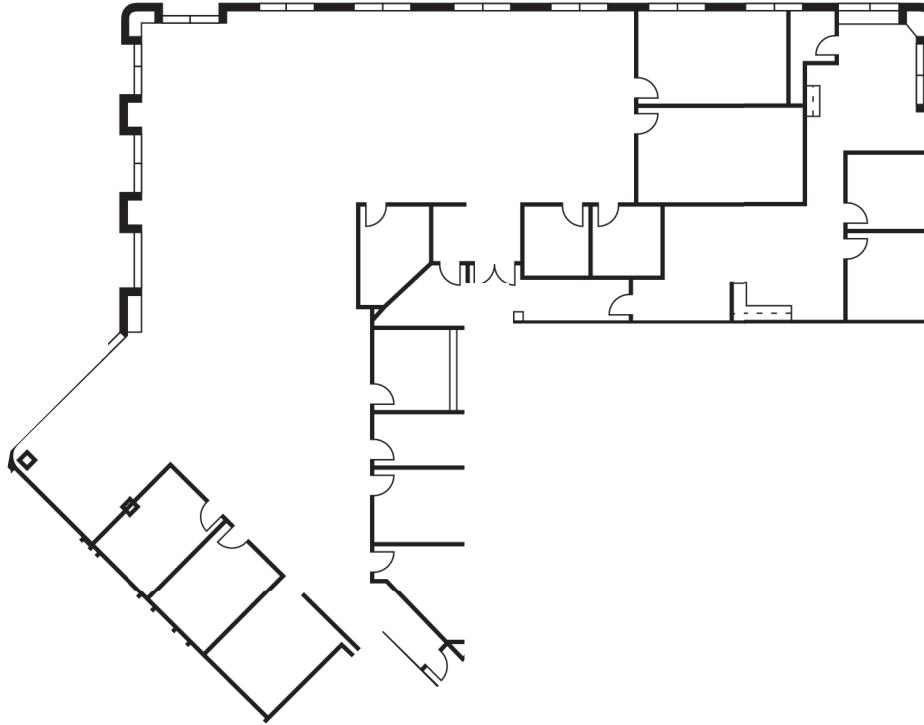
allison.kelly@cbre.com

Lic. 01417664

**CBRE**

© 2025 CBRE, Inc. All rights reserved. This information has been obtained from reliable sources but has not been verified for accuracy or completeness. CBRE, Inc. makes no guarantee, representation, or warranty and accepts no responsibility or liability for the accuracy, completeness, or reliability of the information contained herein. You should conduct a careful, independent investigation of the property and verify all information. Any reliance on this information is solely at your own risk. CBRE and the CBRE logo are service marks of CBRE, Inc. All other marks displayed on this document are the property of their respective owners, and the use of such marks does not imply any affiliation with or endorsement of CBRE. Photos herein are the property of their respective owners. Use of these images without the express written consent of the owner is prohibited.

27422 PORTOLA PARKWAY, SUITES 330 & 340  
8,377 SF



EXCLUSIVE AGENTS:

**GREGG HALY**

+1 949 725 8632

gregg.haly@cbre.com

Lic. 00937913

**ALLISON KELLY**

+1 949 725 8474

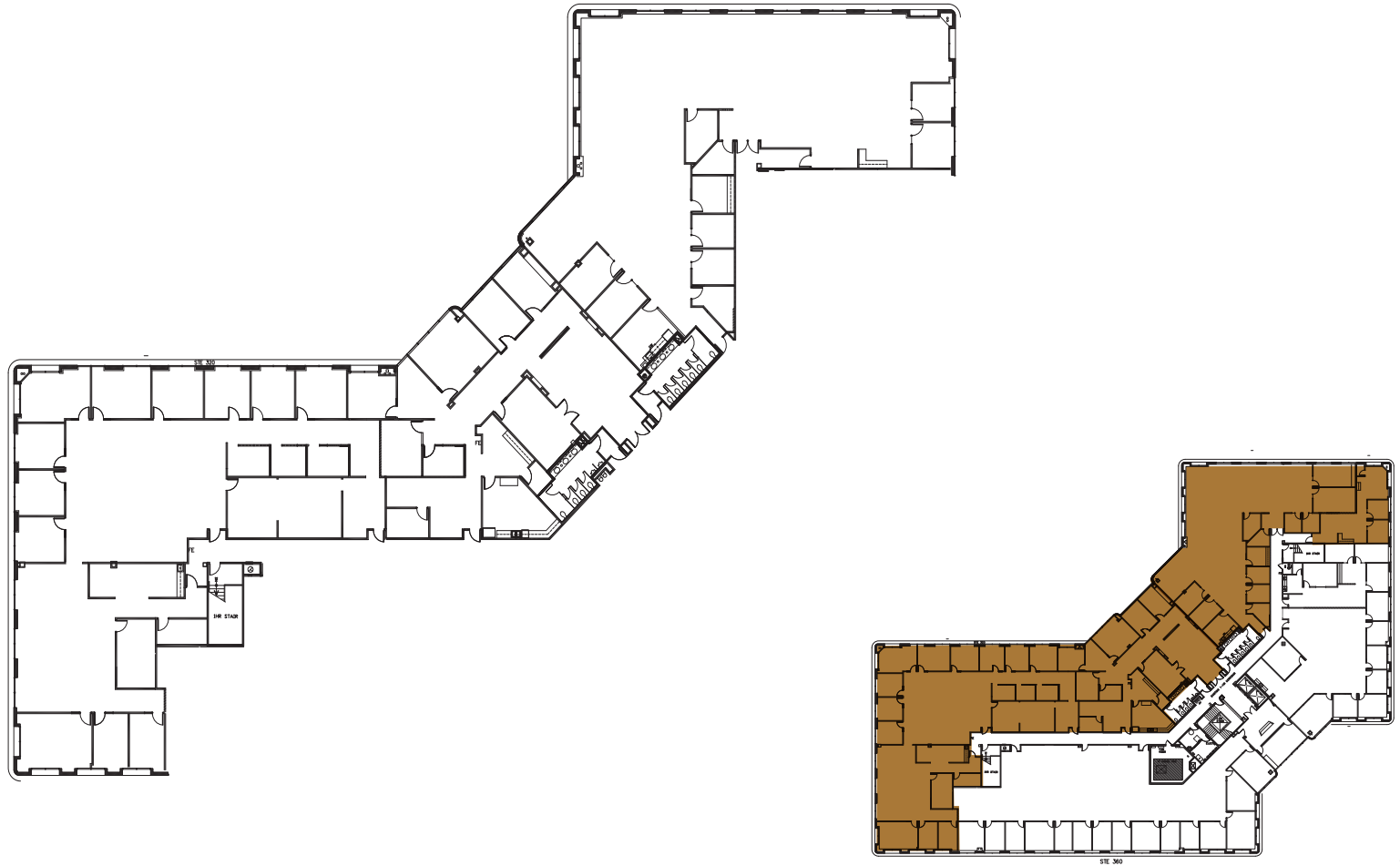
allison.kelly@cbre.com

Lic. 01417664

**CBRE**

© 2025 CBRE, Inc. All rights reserved. This information has been obtained from reliable sources but has not been verified for accuracy or completeness. CBRE, Inc. makes no guarantee, representation, or warranty and accepts no responsibility or liability for the accuracy, completeness, or reliability of the information contained herein. You should conduct a careful, independent investigation of the property and verify all information. Any reliance on this information is solely at your own risk. CBRE and the CBRE logo are service marks of CBRE, Inc. All other marks displayed on this document are the property of their respective owners, and the use of such marks does not imply any affiliation with or endorsement of CBRE. Photos herein are the property of their respective owners. Use of these images without the express written consent of the owner is prohibited.

27422 PORTOLA PARKWAY, SUITES 300-340  
21,582 SF



#### EXCLUSIVE AGENTS:

##### GREGG HALY

+1 949 725 8632

gregg.haly@cbre.com

Lic. 00937913

##### ALLISON KELLY

+1 949 725 8474

allison.kelly@cbre.com

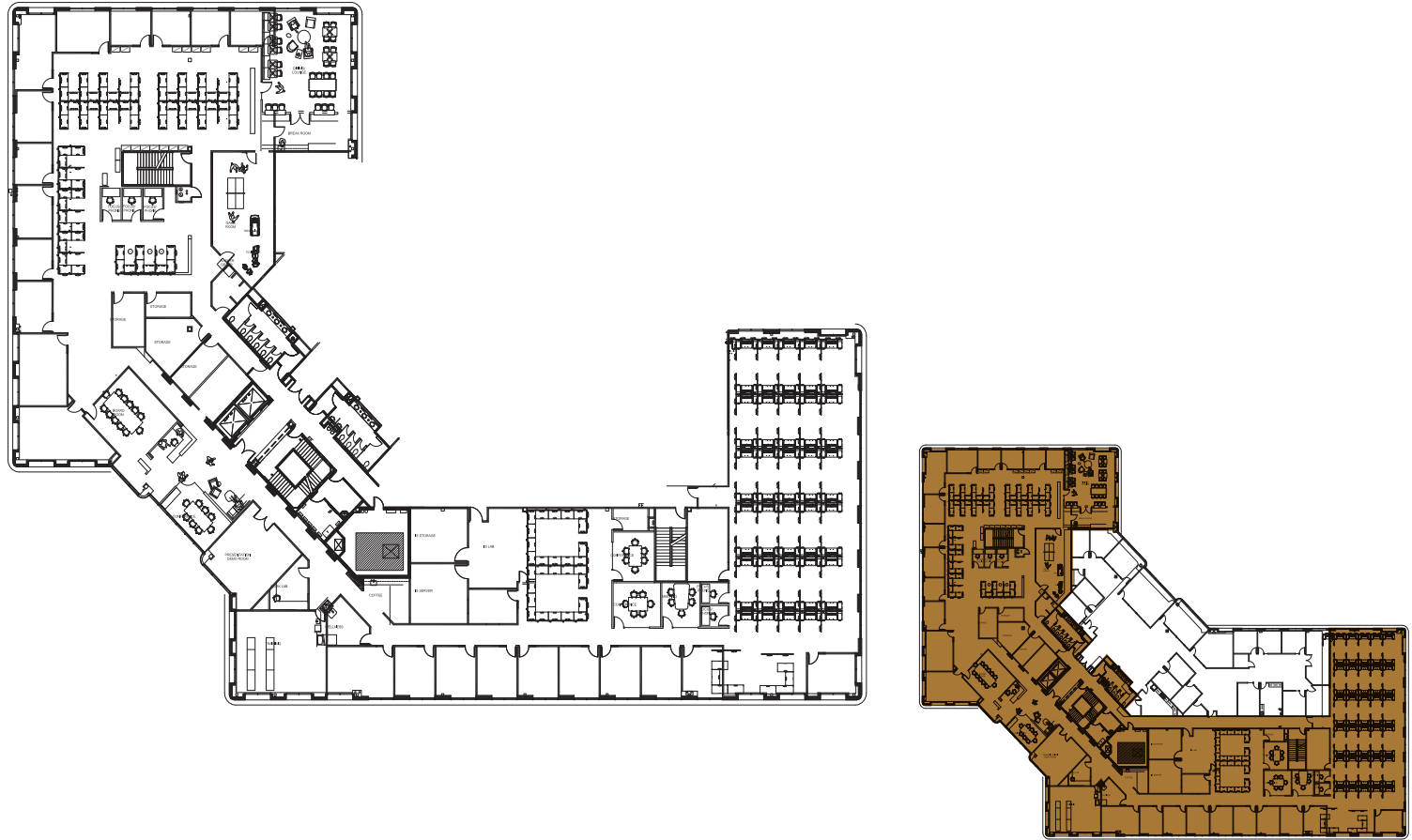
Lic. 01417664

# CBRE

© 2025 CBRE, Inc. All rights reserved. This information has been obtained from reliable sources but has not been verified for accuracy or completeness. CBRE, Inc. makes no guarantee, representation, or warranty and accepts no responsibility or liability for the accuracy, completeness, or reliability of the information contained herein. You should conduct a careful, independent investigation of the property and verify all information. Any reliance on this information is solely at your own risk. CBRE and the CBRE logo are service marks of CBRE, Inc. All other marks displayed on this document are the property of their respective owners, and the use of such marks does not imply any affiliation with or endorsement of CBRE. Photos herein are the property of their respective owners. Use of these images without the express written consent of the owner is prohibited.



27442 PORTOLA PARKWAY, SUITE 300  
27,681 SF



EXCLUSIVE AGENTS:

**GREGG HALY**

+1 949 725 8632

gregg.haly@cbre.com

Lic. 00937913

**ALLISON KELLY**

+1 949 725 8474

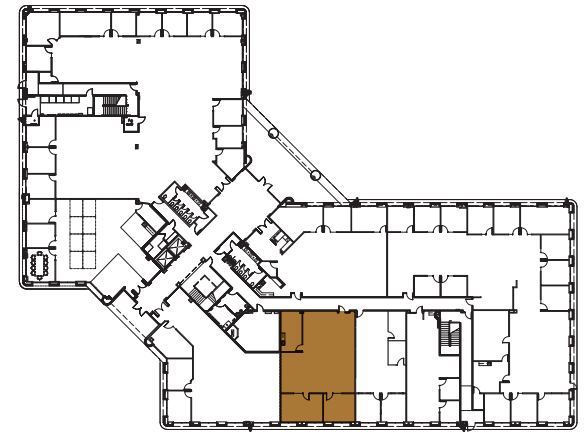
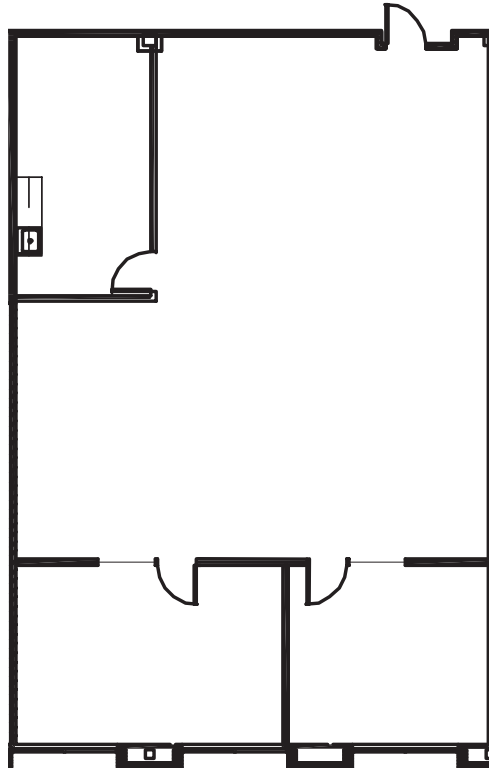
allison.kelly@cbre.com

Lic. 01417664

**CBRE**

© 2025 CBRE, Inc. All rights reserved. This information has been obtained from reliable sources but has not been verified for accuracy or completeness. CBRE, Inc. makes no guarantee, representation, or warranty and accepts no responsibility or liability for the accuracy, completeness, or reliability of the information contained herein. You should conduct a careful, independent investigation of the property and verify all information. Any reliance on this information is solely at your own risk. CBRE and the CBRE logo are service marks of CBRE, Inc. All other marks displayed on this document are the property of their respective owners, and the use of such marks does not imply any affiliation with or endorsement of CBRE. Photos herein are the property of their respective owners. Use of these images without the express written consent of the owner is prohibited.

27442 PORTOLA PARKWAY, SUITE 175  
1,784 SF



#### EXCLUSIVE AGENTS:

##### GREGG HALY

+1 949 725 8632

gregg.haly@cbre.com

Lic. 00937913

##### ALLISON KELLY

+1 949 725 8474

allison.kelly@cbre.com

Lic. 01417664

**CBRE**

© 2025 CBRE, Inc. All rights reserved. This information has been obtained from reliable sources but has not been verified for accuracy or completeness. CBRE, Inc. makes no guarantee, representation, or warranty and accepts no responsibility or liability for the accuracy, completeness, or reliability of the information contained herein. You should conduct a careful, independent investigation of the property and verify all information. Any reliance on this information is solely at your own risk. CBRE and the CBRE logo are service marks of CBRE, Inc. All other marks displayed on this document are the property of their respective owners, and the use of such marks does not imply any affiliation with or endorsement of CBRE. Photos herein are the property of their respective owners. Use of these images without the express written consent of the owner is prohibited.