

1401 N TUSTIN AVE

SANTA ANA, CA



LEE & ASSOCIATES

ERIC DARNELL

Senior Vice President
CalDRE: 01888743
949.790.3157
edarnell@leeirvine.com

MIA PHAM

Senior Vice President
CalDRE: 01875144
949.790.3129
mpham@leeirvine.com

PROPERTY DETAILS



FEATURES

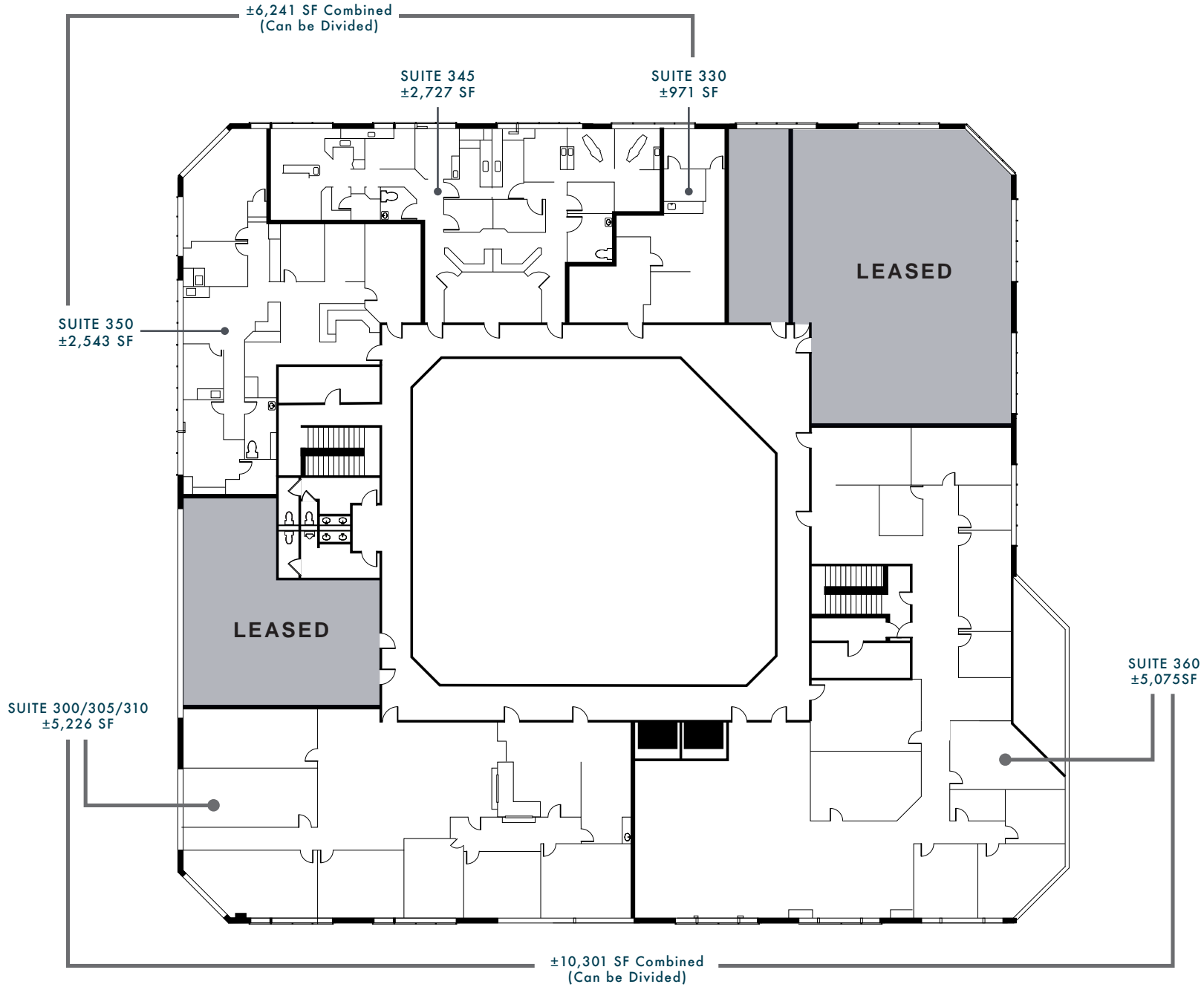
- Medical and office suites available
- 3-story medical/office building
- Easy access and convenient parking
- Free surface parking (reserved parking available upon request)
- Professionally managed
- Ideally suited for therapists, law firms, doctors and accountants
- Centrally located near restaurants, banks and major freeways

* Asking Rate: \$2.10 FSG Office
\$3.25 FSG Medical

AVAILABILITY

Suite 330	Medical	971	Waiting area, reception, 2 offices, 1 exam room and open area
Suite 345	Medical	2,727	Built out dental office - available 12/1/2022
Suite 350	Office	2,543	Reception and waiting area, 5 exam rooms, doctor office
Suite 360	Medical	5,075	Previous Physical Therapy space. Open area and private offices.
Suite 300/305/310	Office/Medical	5,226	Current lab space
Suite 300/305/310/360	Office/Medical	10,301	Divisible - See attached plan
Suite 330/345/350	Medical	6,241	Divisible - See attached plan

FLOOR PLANS



3RD FLOOR

±971 - ±10,301 SF AVAILABLE