

FVSD PLAZA



10055 Slater Ave | Fountain Valley
Office Building
For Lease

Professional Office Space For Lease

Building Summary

- Two-story, elevator served secured entry, office building
- Subterranean and surface parking available; 4/1,000 parking ratio
- Close proximity to the San Diego (405) freeway with easy access to all areas of Orange County and Long Beach via the Garden Grove (22), Costa Mesa (55) and Santa Ana (5) freeways
- Within walking distance of various dining, banking and retail amenities
- ATM on-site
- Contact us for additional details or to schedule a tour



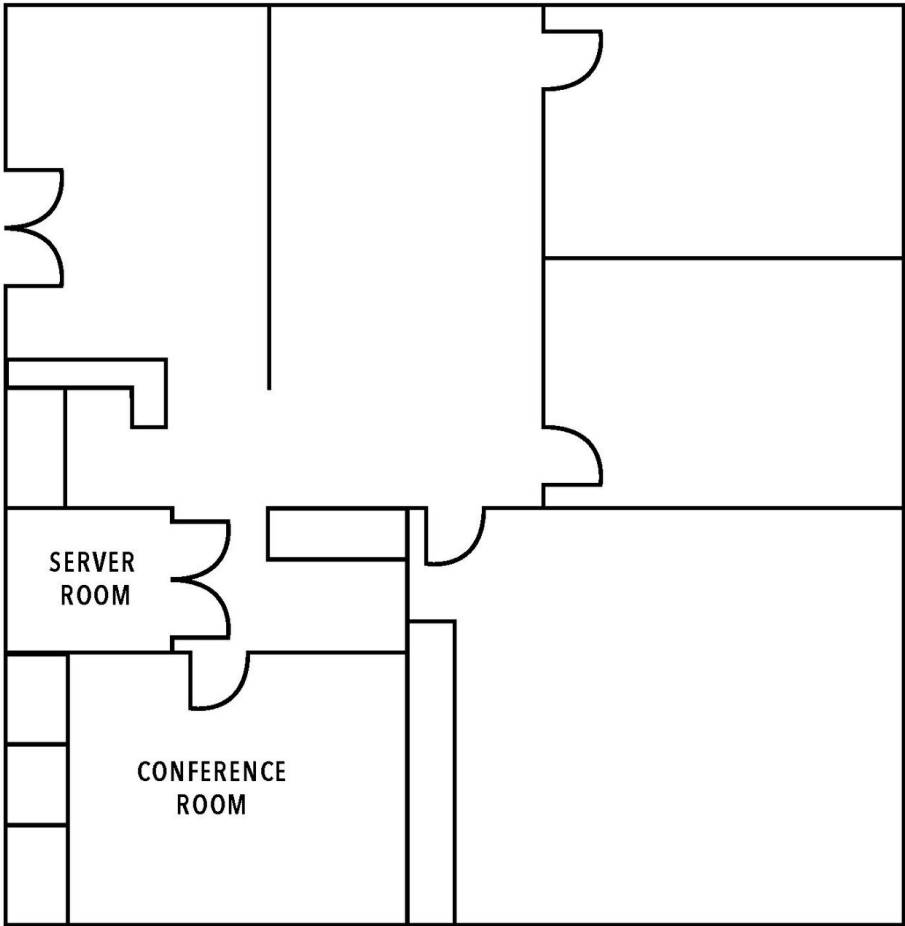
Property Overview

Exclusively listed by the Office Advisory Group of Lee & Associates, Fountain Valley School District Plaza is a two-story commercial office building located at 10055 Slater Ave. The building offers a professional office environment with nearby dining, banking, and retail amenities. The property is in close proximity to the San Diego (405) freeway with easy access to all areas of Orange County and Long Beach via the Garden Grove (22), Costa Mesa (55) and Santa Ana (5) freeways.

FVSD PLAZA

Floor Plan

Suite 231 +/-1,907 SQFT



Exclusive Agents

MARSHAL VOGT

President
714.564.7117
mvogt@lee-associates.com
CalDRE #01519213

JAIMESON HEARNE

Principal
714.564.7146
jhearne@lee-associates.com
CalDRE #01925107



All information contained herein has been provided by Lessor and/or third parties, but has not been independently verified by Lee & Associates or its agent(s). Lessee and interested parties should independently verify all information communicated by these sources.

FVSD PLAZA



Exclusive Agents

MARSHAL VOGT

President
714.564.7117
mvogt@lee-associates.com
CalDRE #01519213

JAIMESON HEARNE

Principal
714.564.7146
jhearne@lee-associates.com
CalDRE #01925107

