

UNITS FOR LEASE

YORBA LINDA COMMERCE CENTER

3700 - 3960 Prospect Ave, Yorba Linda, CA 92886



EXCLUSIVELY LISTED BY:



Gary Martinez, CCIM, SIOR
(714) 905-9383
gary@ashwillassociates.com
DRE Lic #01318932

Ashwill
Associates
COMMERCIAL REAL ESTATE

PROPERTY FEATURES

Move-In Ready Spaces

Clean, updated units that are ready for your business to move in and get started.

Flexible Layouts

Spaces can be used for office, storage, or a combination of both to fit your needs.

Easy Loading Access

Roll-up doors make it simple to bring in equipment, materials, or inventory.

On-Site Management

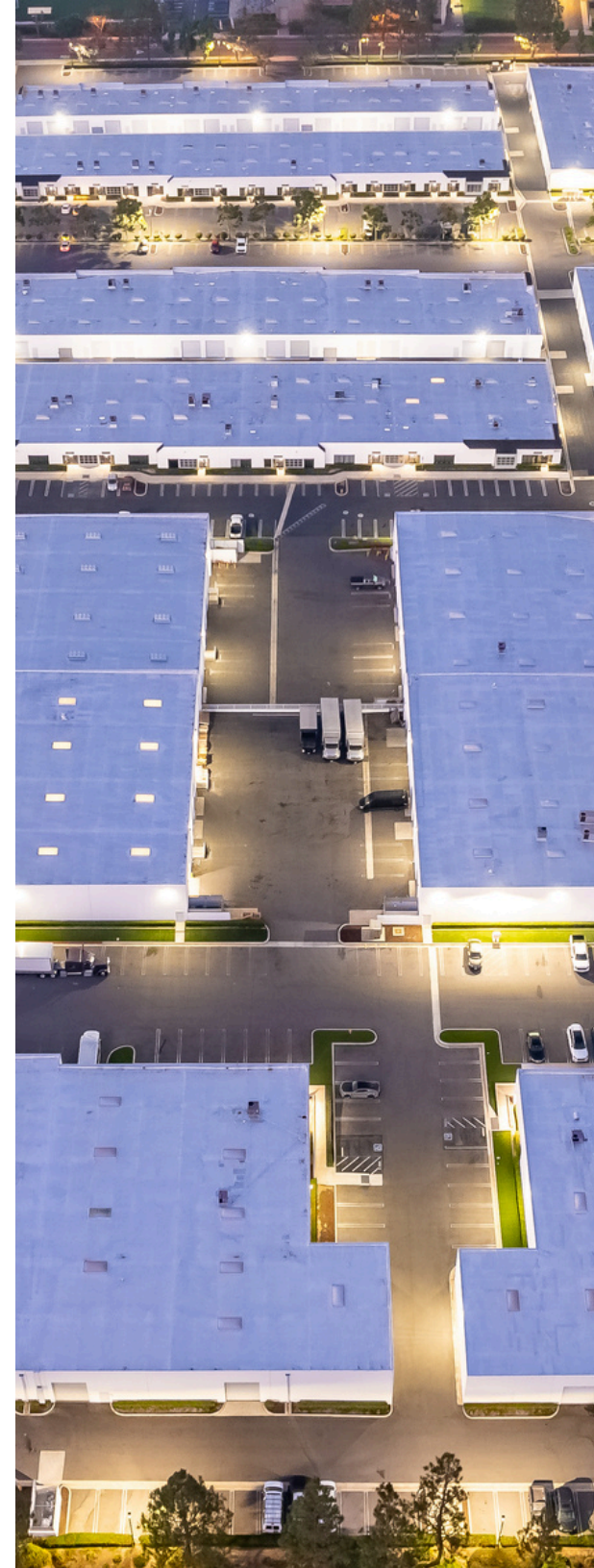
Professional management is available to help keep things running smoothly.

Ample Parking

Plenty of parking for you, your employees, and your customers.

Room to Grow

Multiple unit sizes and configurations to support your business as it expands.





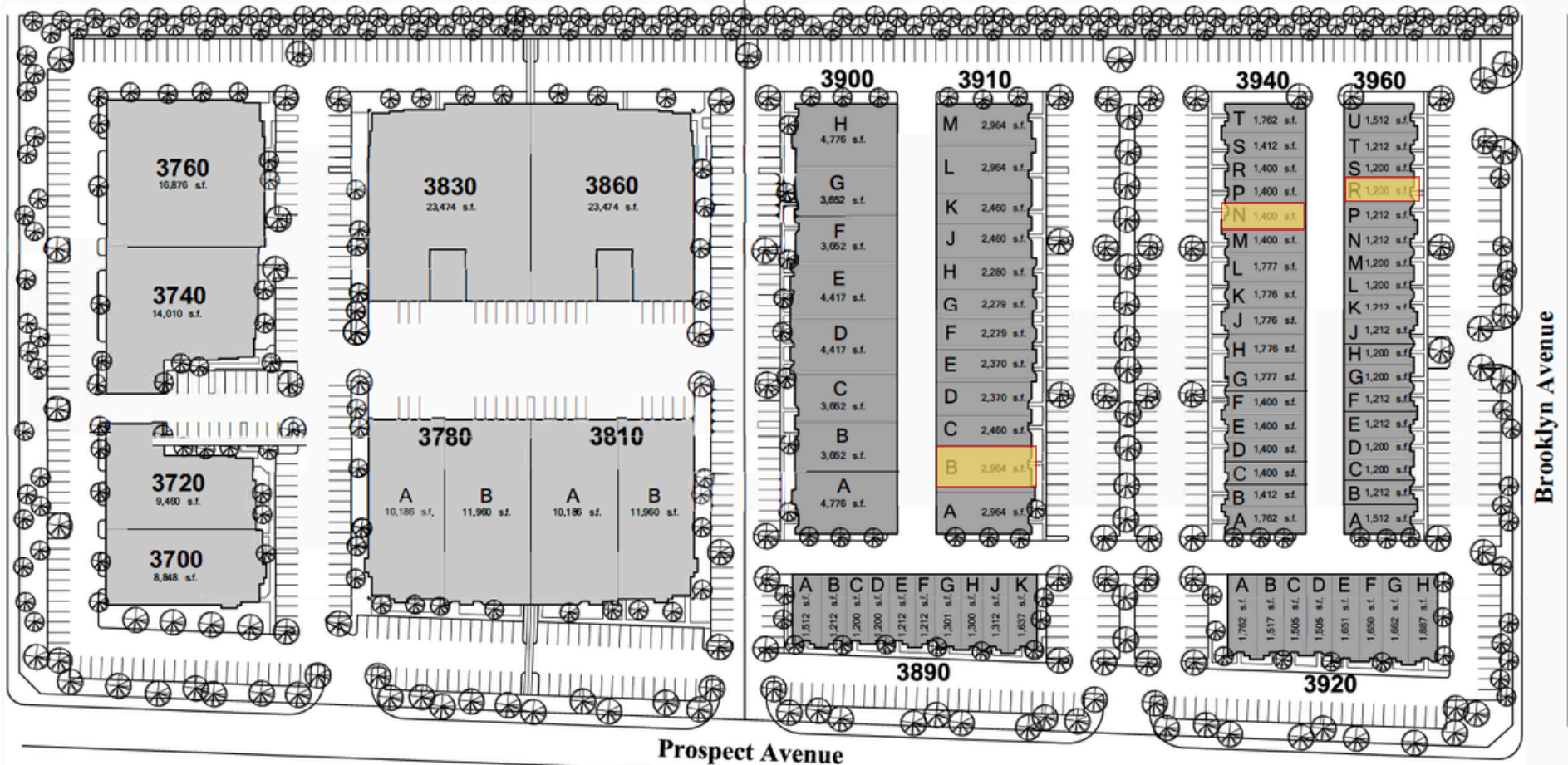
EXCLUSIVELY LISTED BY:



Gary Martinez, CCIM, SIOR
(714) 905-9383
gary@ashwillassociates.com
DRE Lic #01318932

Ashwill
Associates
COMMERCIAL REAL ESTATE

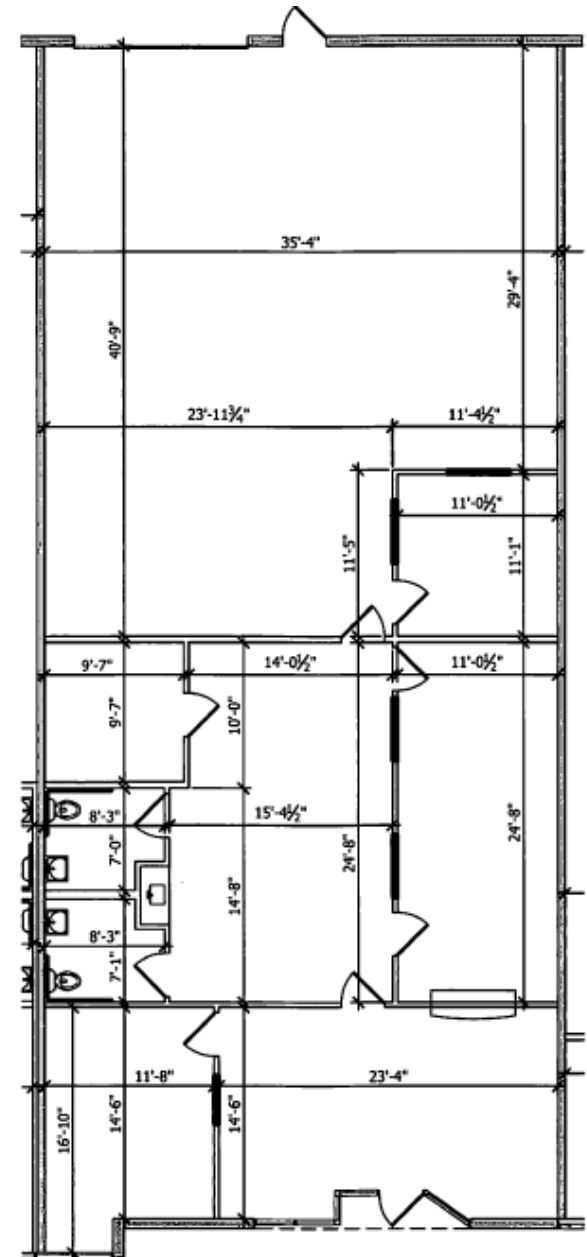
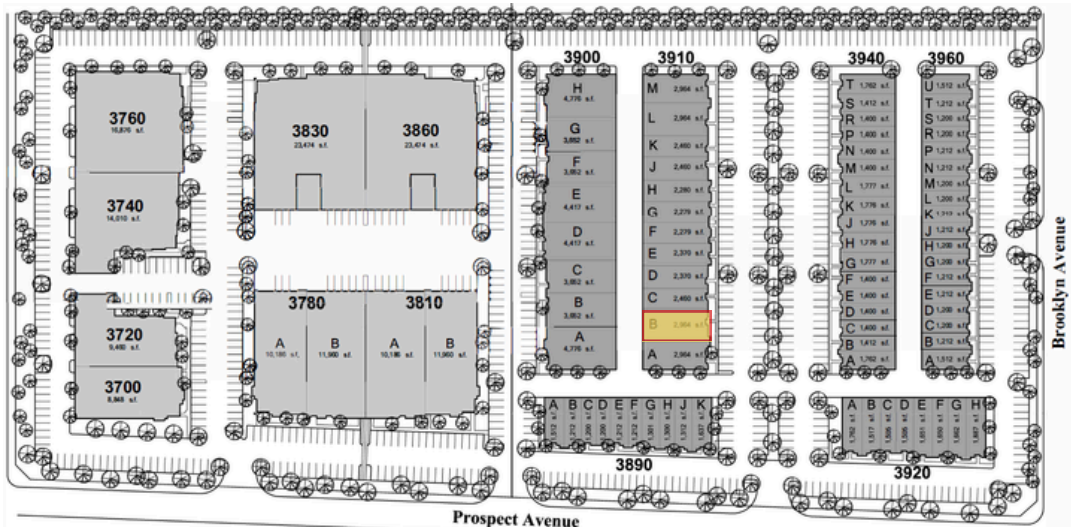
Suites	Total SF	Warehouse	Office	GL	Space Type
3920-B	2,964	1,455	322	1	Warehouse
3940-N	1,413	671	742	1	Warehouse
3960-R	1,200	934	266	1	Warehouse



SUITE 3910-B

± 2,964 Total SF

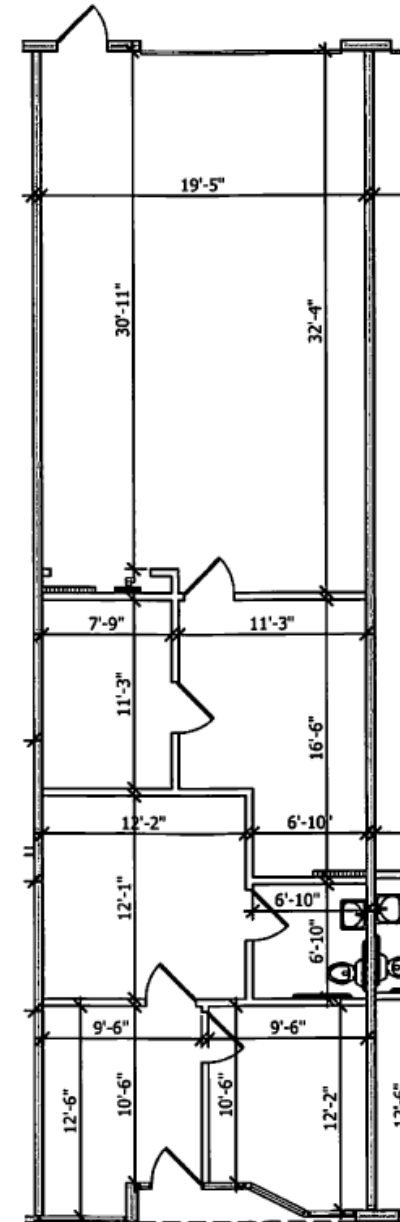
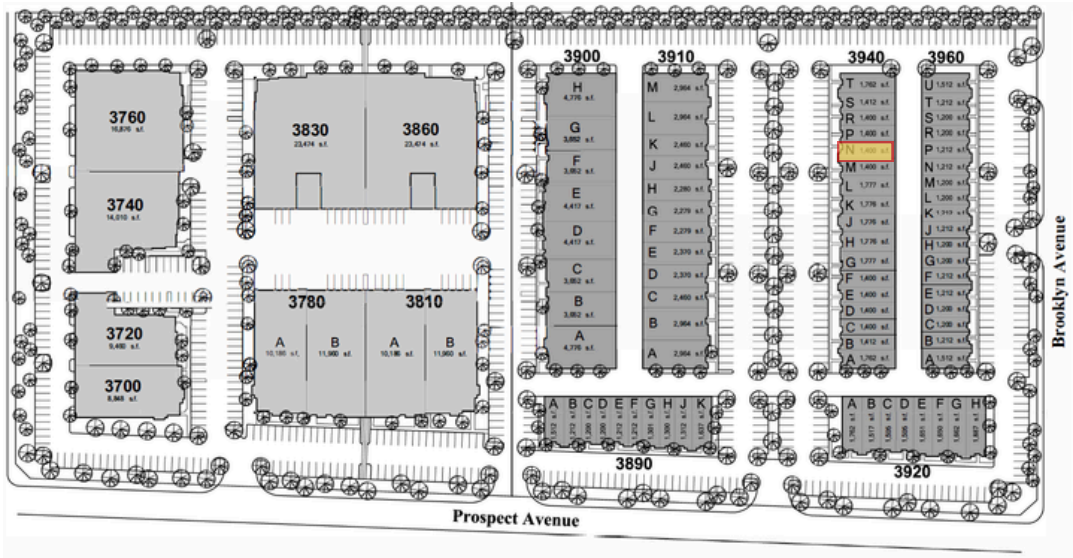
± 1,590 Office SF



*Floor Plans Not to Scale

SUITE 3940-N

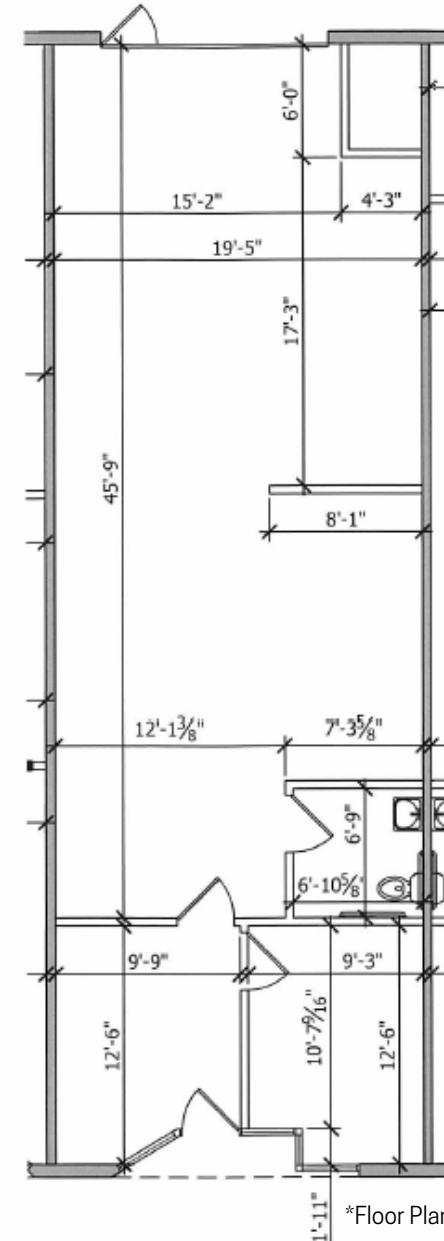
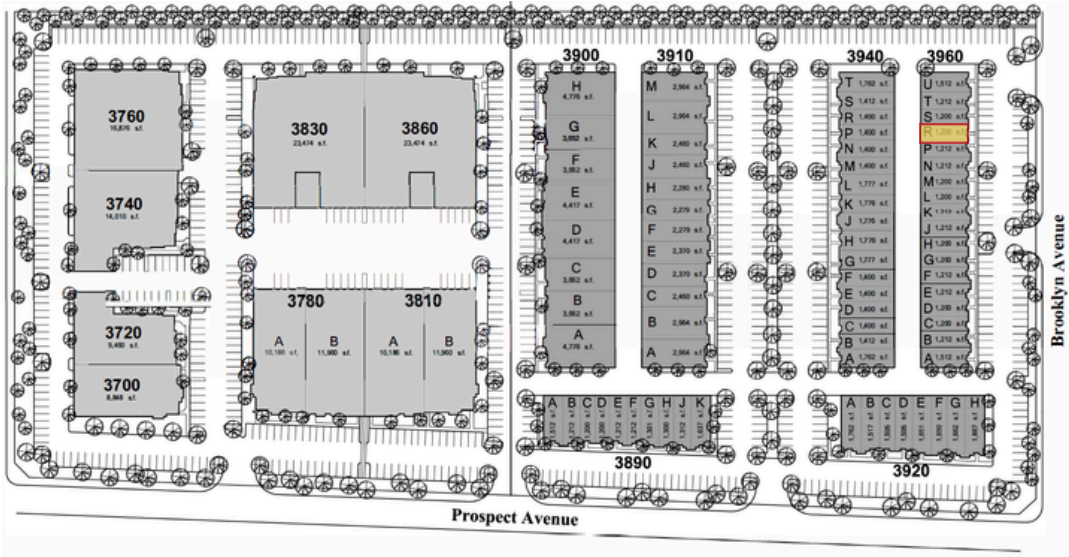
± 1,413 Total SF
± 742 Office SF



*Floor Plans Not to Scale

SUITE 3960-R

- ± 1,200 Total SF
- ± 266 Office SF

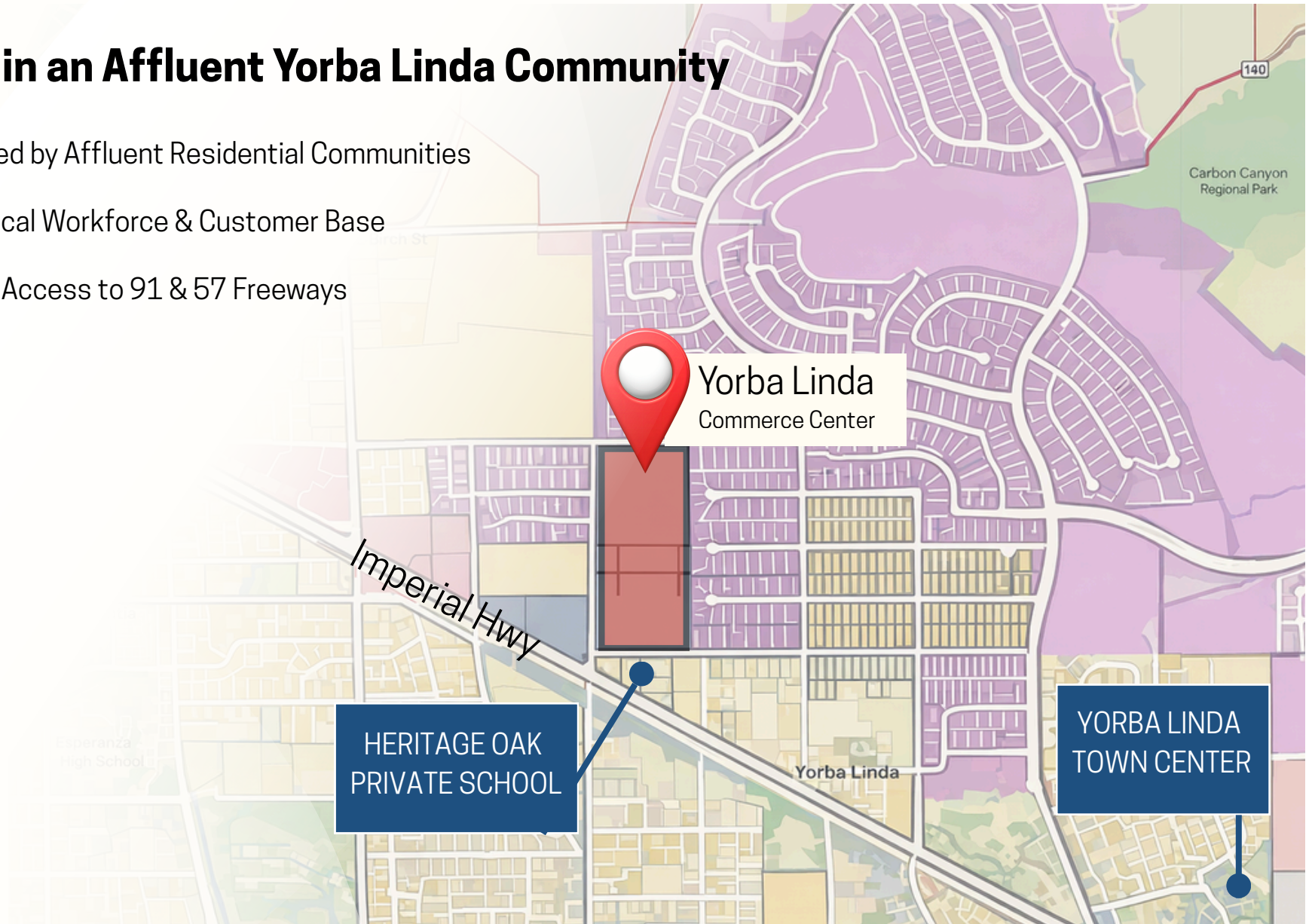


*Floor Plans Not to Scale



Located in an Affluent Yorba Linda Community

- ✓ Surrounded by Affluent Residential Communities
- ✓ Strong Local Workforce & Customer Base
- ✓ Excellent Access to 91 & 57 Freeways



UNITS FOR LEASE

YORBA LINDA COMMERCE CENTER

3700 - 3960 Prospect Ave, Yorba Linda, CA 92886



Ashwill
Associates
COMMERCIAL REAL ESTATE

Disclaimer: All information contained herein is deemed reliable but not guaranteed. Prospective tenants should independently verify all measurements, features, and zoning regulations. Availability, pricing, and terms are subject to change without notice. This is a marketing brochure and not a legally binding offer.

Contact Us Today to Schedule a Tour



Gary Martinez, CCIM, SIOR
(714) 905-9383
gary@ashwillassociates.com
DRE Lic #01318932