



# FOR LEASE

### Contact us:

#### Zac Kolander

Associate Vice President  
License No. 02096759  
(949)724-5531 | (714) 715-1140  
Zac.Kolander@colliers.com

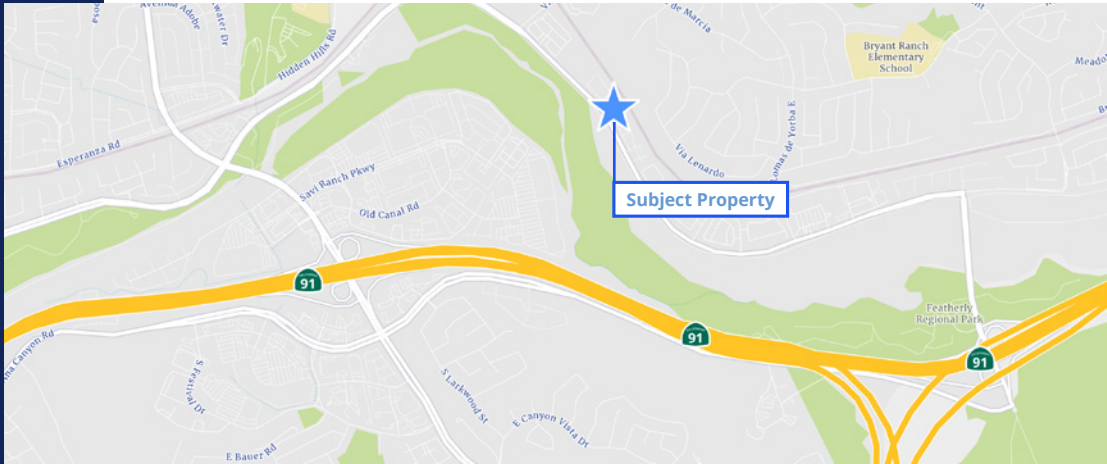
# Yorba Linda Business Park

23001-23101 E La Palma Ave, Yorba Linda, CA

### Property Features

- Frontage on La Palma Avenue
- High Image Business Park
- Office and Industrial/Flex Spaces Available
- No CAM Charges or Base Year Pass-throughs
- Stable Local Ownership

*\*Property Owner Particular About Use Talk to Broker Before Touring*



**Colliers**  
3 Park Plaza Suite 1200  
Irvine, CA 92614 | USA  
www.colliers.com

Copyright © 2026 Colliers. Information herein has been obtained from sources deemed reliable, however its accuracy cannot be guaranteed. User must conduct due diligence and verification.

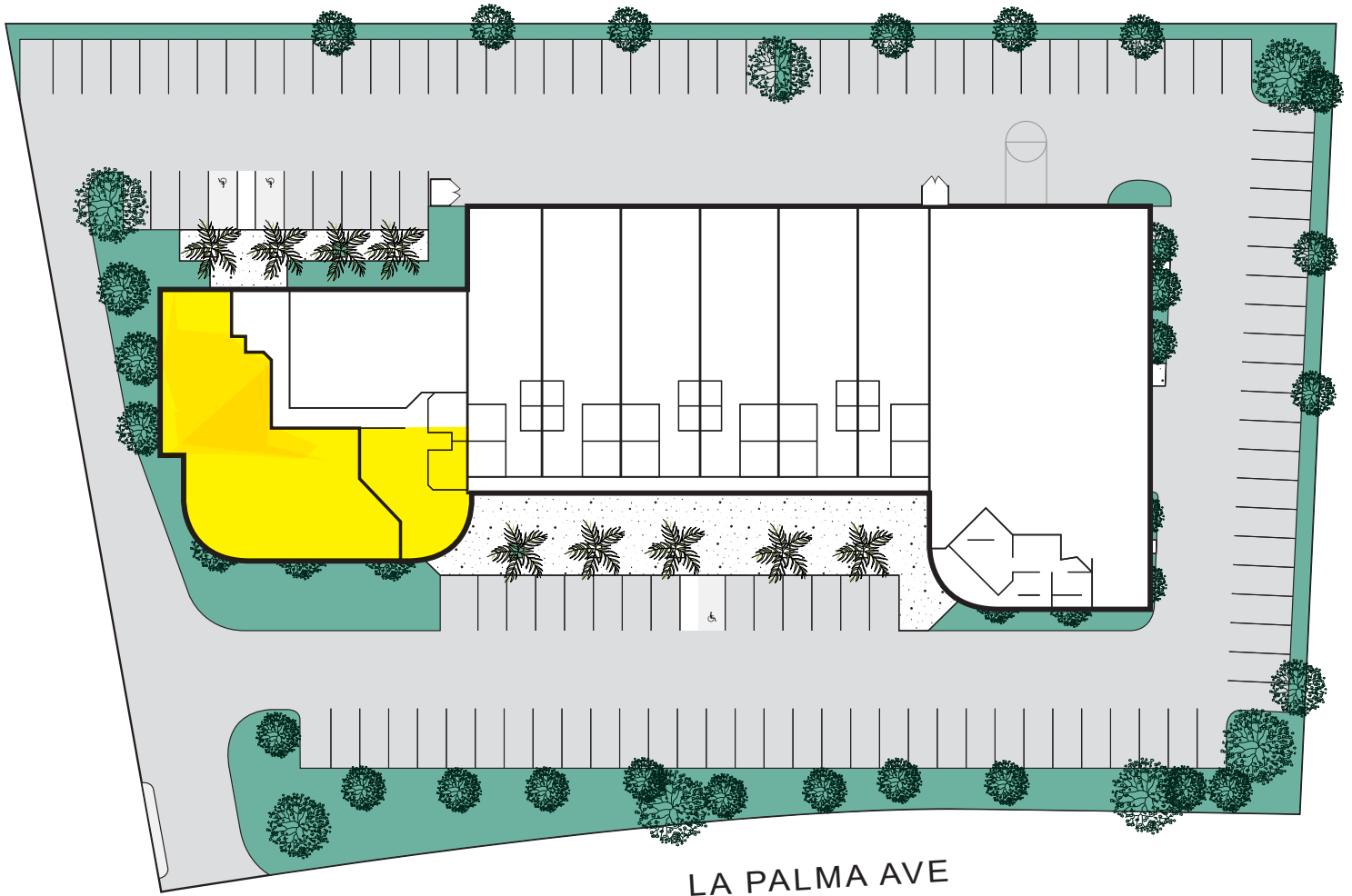
Accelerating success.

# Yorba Linda Business Park

23001-23101 E La Palma Ave, Yorba Linda, CA

## Site Plan

### SITE PLAN



Suite	Rentable SF	Lease Rate PSF	Availability & Comments
210 - Office	±1,530	\$1.65 FSG*	4 Private Offices, Bullpen Area, Kitchenette
23041- Industrial	±2,136	\$1.50 G	Reception, 4 Private Offices, Kitchenette, 2 Restrooms, Warehouse

*\*Includes Water, Electric & Janitorial*

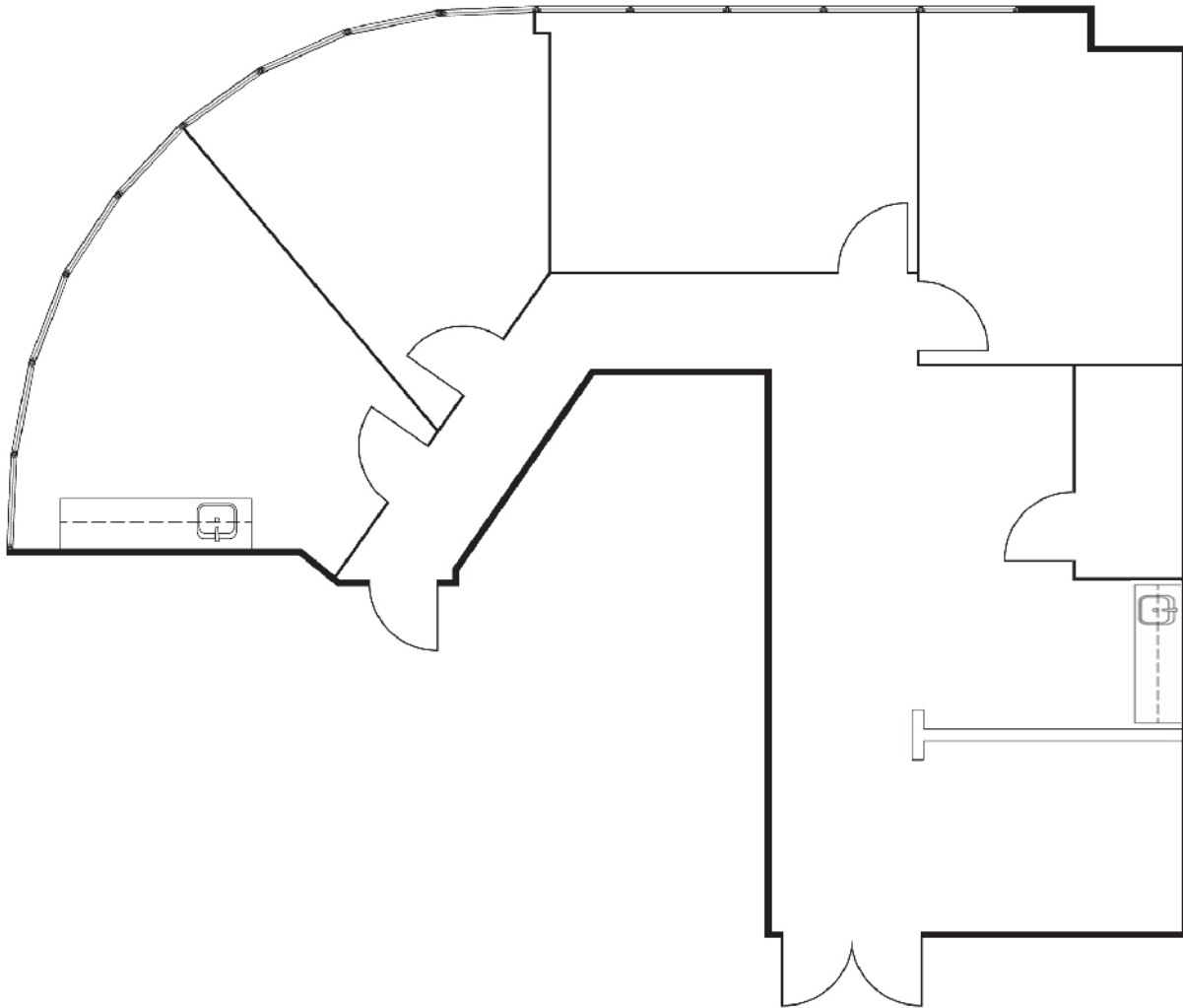
# Yorba Linda Business Park

23001-23101 E La Palma Ave, Yorba Linda, CA

## Floor Plan

### Suite 210 - Office

± 1,530 SF RBA



#### Zac Kolander

Associate Vice President

License No. 02096759

(949) 724-5531 | (714) 715-1140

Zac.Kolander@colliers.com



#### Colliers

3 Park Plaza Suite 1200  
Irvine, CA 92614 | USA  
[www.colliers.com](http://www.colliers.com)