

17780

FITCH, IRVINE



FOR LEASE

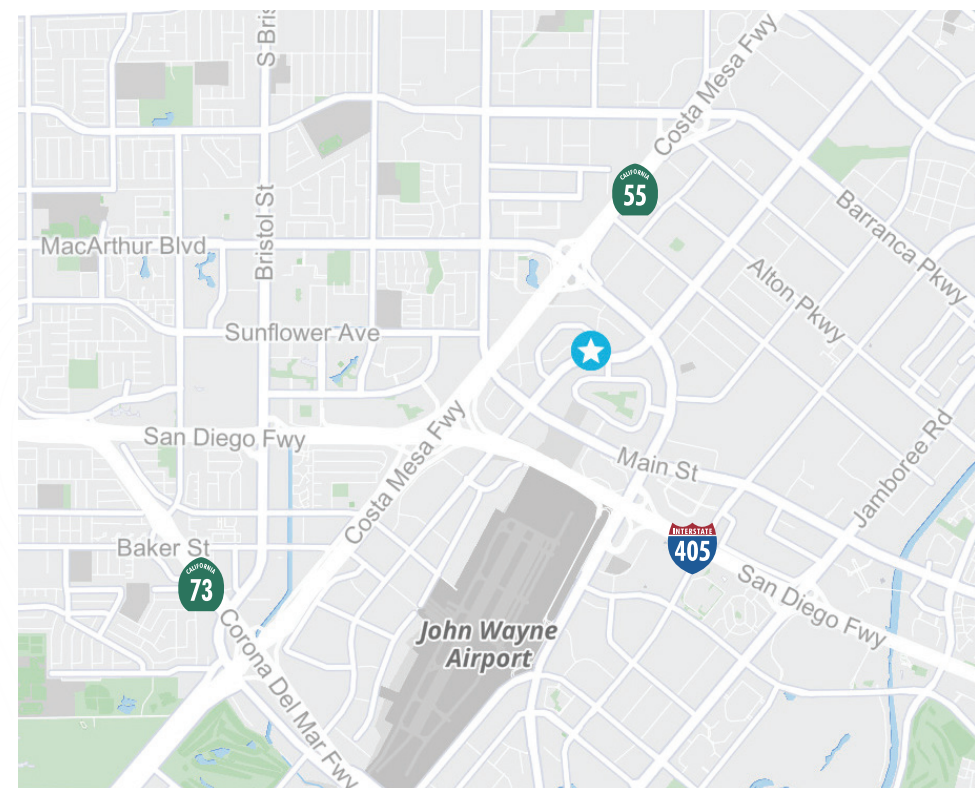
±2,308-12,500 SF of 2nd Floor Office Space





property overview/highlights

- › Suite 210 - ±6,583 SF of Office Space
- › Suite 215 - ±2,308 SF of Office Space
- › Suite 220 - ±3,609 SF of Office Space
- › Suites are contiguous and combinable for a total of ±12,500 SF
- › Available Immediately
- › POL ±50,025 SF Freestanding Two-Story Office Building over Covered Parking
- › Elevator Served
- › 3.2:1,000 SF Covered & Surface Parking
- › Minutes to John Wayne Airport & Several Major Freeways including the Costa Mesa (55), San Diego (405) & Corona Del Mar (73)



floor plan

Suite 210

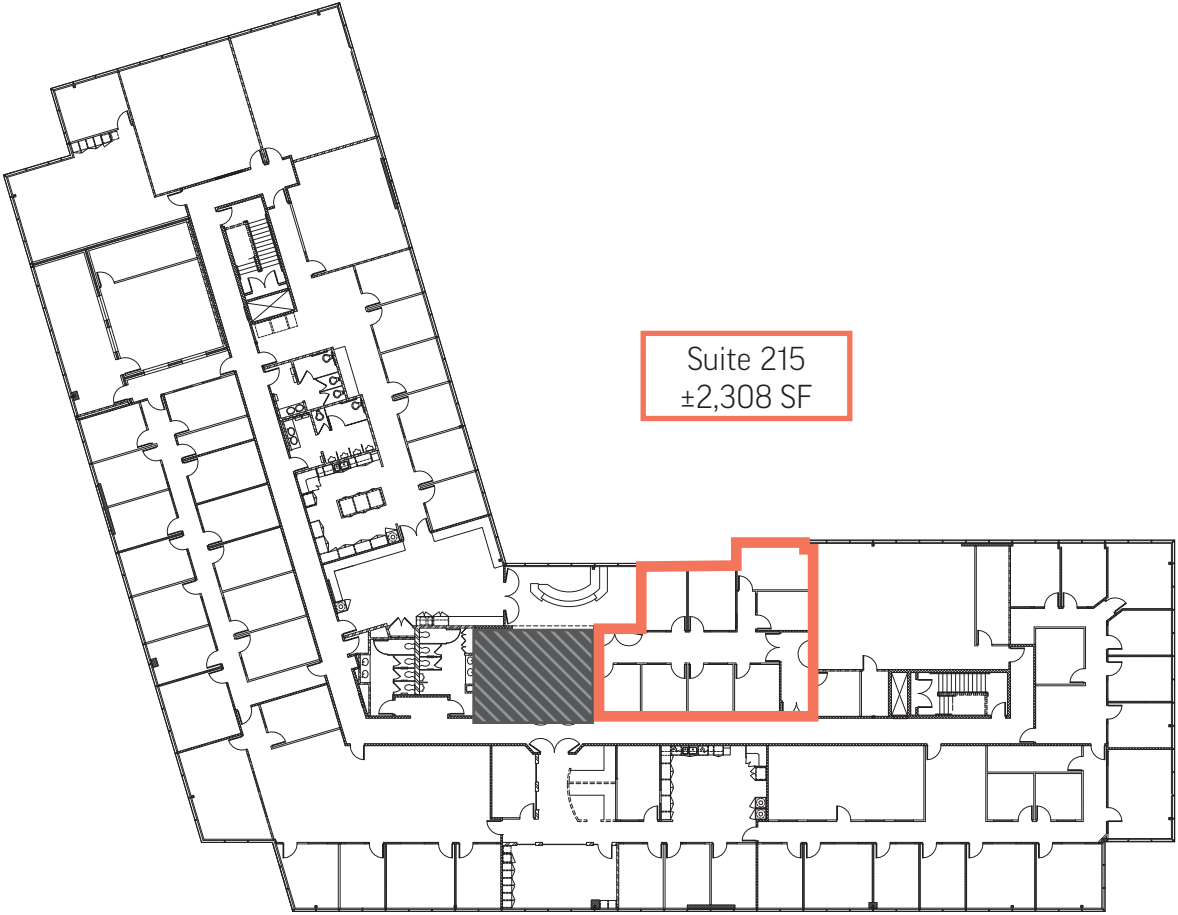


Suite 210
±6,583 SF



floor plan

Suite 215

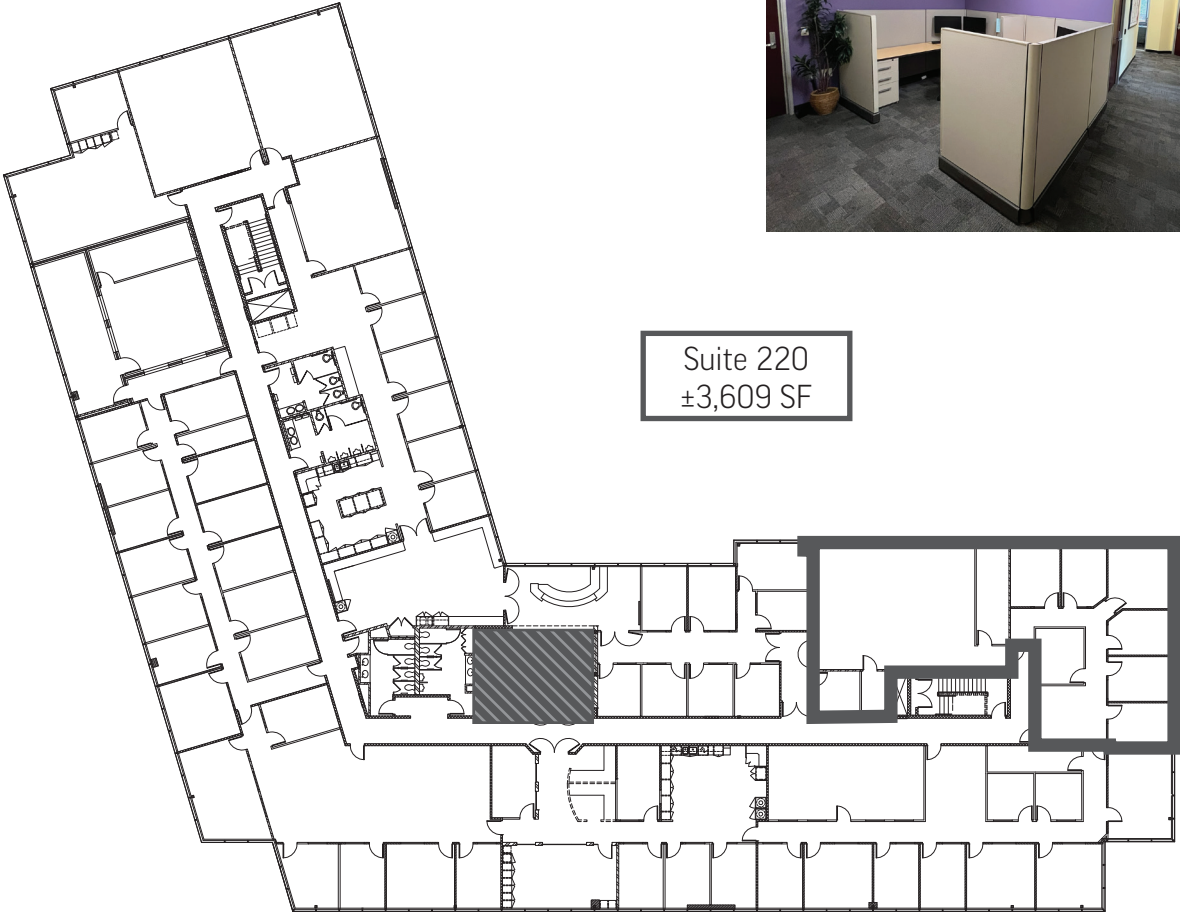


Suite 215
±2,308 SF



floor plan

Suite 220



17780

FITCH, IRVINE



Ross Bourne
T+1 949 725 8537
ross.bourne@cbre.com
Lic. 01436669

Joe Czech
T+1 949 725 8529
joe.czech@cbre.com
Lic. 02159112



© 2026 CBRE, Inc. All rights reserved. This information has been obtained from sources believed reliable, but has not been verified for accuracy or completeness. You should conduct a careful, independent investigation of the property and verify all information. Any reliance on this information is solely at your own risk. CBRE and the CBRE logo are service marks of CBRE, Inc. All other marks displayed on this document are the property of their respective owners, and the use of such logos does not imply any affiliation with or endorsement of CBRE. Photos herein are the property of their respective owners. Use of these images without the express written consent of the owner is prohibited.