

# FOR LEASE

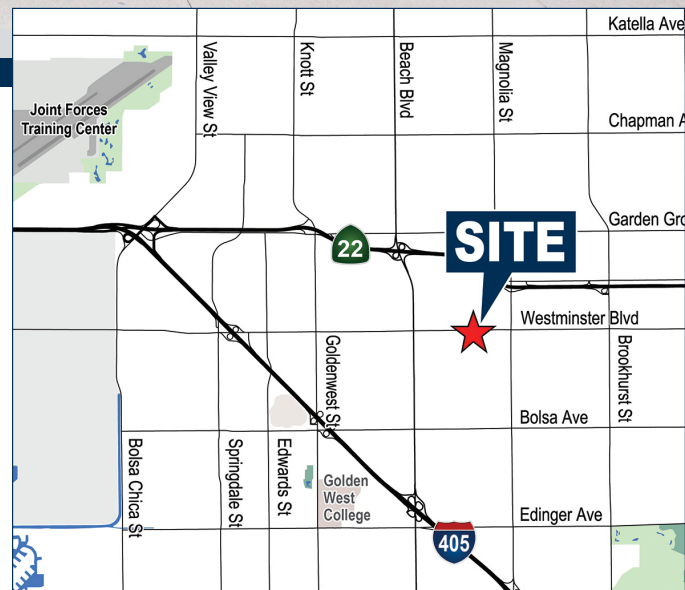
# AVAILABLE OFFICE UNITS

8732 WESTMINSTER BLVD | WESTMINSTER, CA



## PROPERTY FEATURES

- Opens to lush and serene courtyard
- Westminister Blvd. frontage
- Ideal executive office - GET OUT OF THE HOUSE
- Frontier Fios High Speed Internet
- Central Air
- Full Service lease, well priced
- Ideal for law, insurance, real estate, healthcare



## Voit

REAL ESTATE SERVICES

2400 E. Katella Avenue, Suite 750  
Anaheim, CA 92806  
License #01991785 [www.voitco.com](http://www.voitco.com)

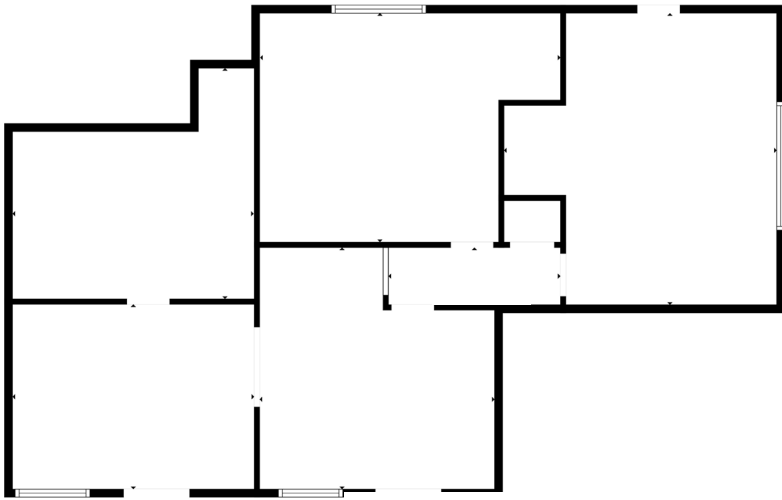
Exclusively Offered By:



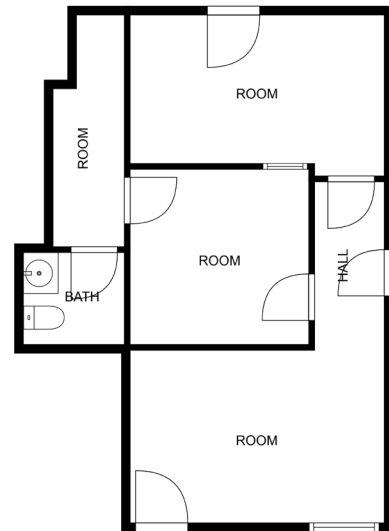
**ERIC SMITH**  
Sr. Vice President | Partner  
(714) 935-2310  
[ESmith@voitco.com](mailto:ESmith@voitco.com)  
Lic. #01940591

# 8732 WESTMINSTER BLVD | WESTMINSTER, CA

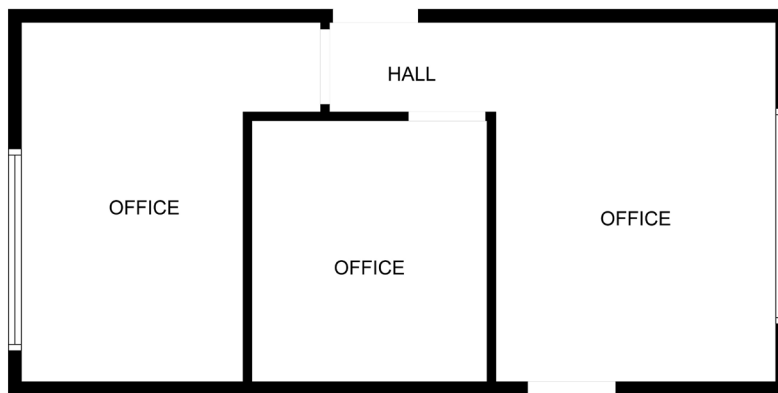
**UNIT #1**



**UNIT #5**



**UNIT #8**



## 8732 WESTMINSTER BLVD

Suite	Size SF	Rate	Availability	Comments
1	± 1,238	\$2,750/month	Immediately	Natural Lighting, HVAC, Ideal for small office
5	±500	\$1,250/month	Immediately	Natural Lighting, HVAC, Ideal for small office, private rest room
8	±425	\$950/month	Immediately	Can be combined with #5, ideal for small office, HVAC, walls can be demo'd, recently renovated
5&8 Combined	±925	\$1,850/ month	Immediately	Ideal for small office, private bathroom, recently renovated, HVAC

# Voit

REAL ESTATE SERVICES

2400 E. Katella Avenue, Suite 750

Anaheim, CA 92806

License #01991785 www.voitco.com

Exclusively Offered By:



**ERIC SMITH**

Sr. Vice President | Partner

**(714) 935-2310**

ESmith@voitco.com

Lic. #01940591