

ONTARIO PACIFIC BUSINESS CENTER

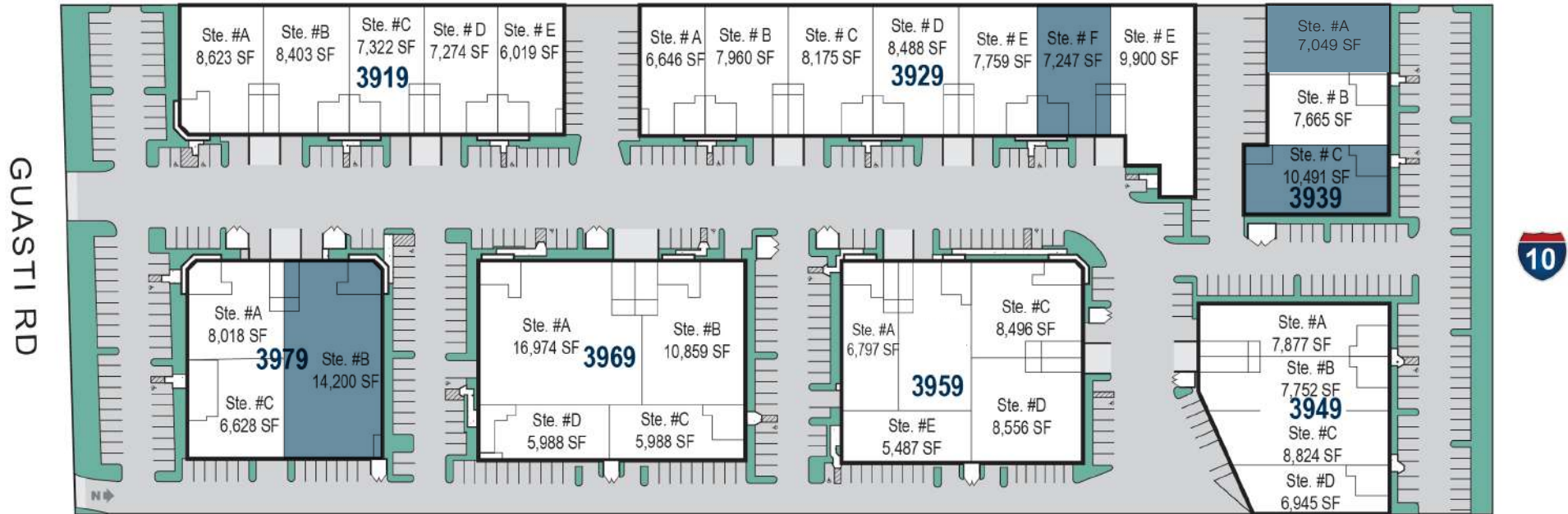
3919-3979 E GUASTI ROAD • ONTARIO, CA



ONTARIO PACIFIC BUSINESS CENTER

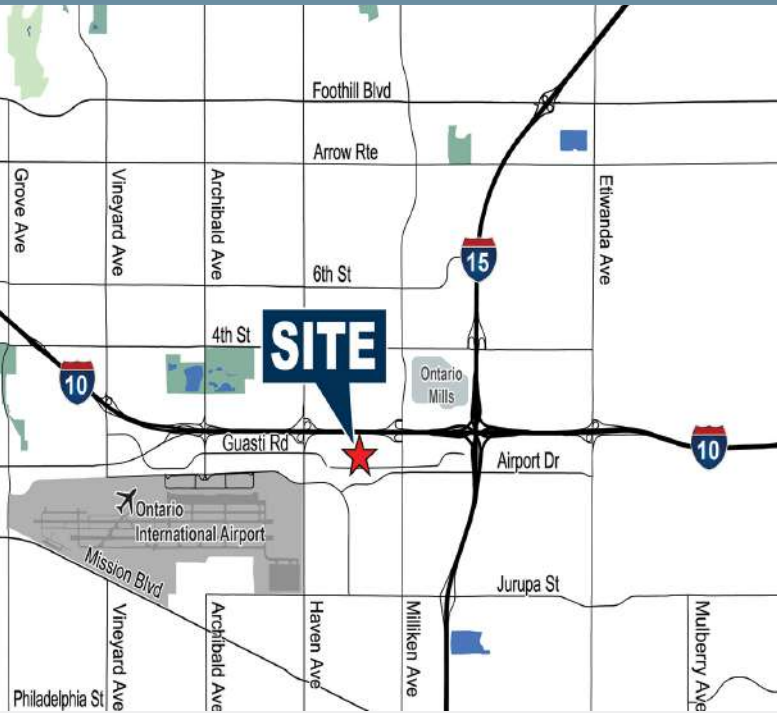
3919-3979 E GUASTI ROAD • ONTARIO, CA

CURRENT AVAILABILITIES



Address	Unit	Total Size SF	Office SF	Lease Rate PSF / NNN	Comments
3929 E Guasti Rd	F	±7,247	±843	\$1.40 / \$0.26	1 DH / 1 GL
3939 E Guasti Rd	A	±7,049	±1,132	\$1.30 / \$0.26	1 GL
3939 E Guasti Rd	C	±10,491	±3,639	\$0.66 / \$0.26	Teaser Rate: Yr 1-\$0.60 PSF Yr 2- \$1.20 PSF Yr 3 - \$1.25 PSF
3979 E Guasti Rd	B	±14,200	±1,185	\$1.40 / \$0.26	1 DH / 1 GL

ONTARIO PACIFIC BUSINESS CENTER



Situated along the I-10 freeway, the Ontario Pacific Business Center offers excellent visibility and accessibility in a 254,861 square-foot business park. This professionally managed, high-image property provides leasing options ranging from 5,400 to 17,000 square feet, with each unit including office space and mezzanine space for light storage all included within the square footage of each unit.

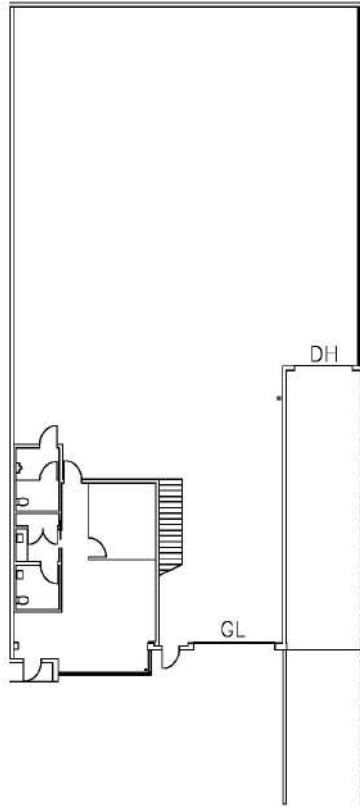
The business park is ideally located near Ontario International Airport, with convenient access to the Pomona (60), San Bernardino (I-10), and Ontario (I-15) freeways. Unit's feature a clear height of 22 feet (verification needed), along with dock-high and ground-level loading options. Ample surface parking is available, and the entire park is fire sprinklered. Zoned for General Industrial use by the City of Ontario, this property is perfectly suited for a variety of business operations.



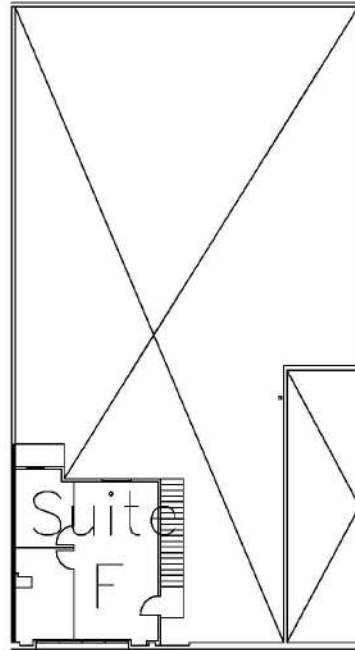
ONTARIO PACIFIC BUSINESS CENTER

3929 E GUAISTI ROAD, UNIT F • ONTARIO, CA

FIRST FLOOR



SECOND FLOOR

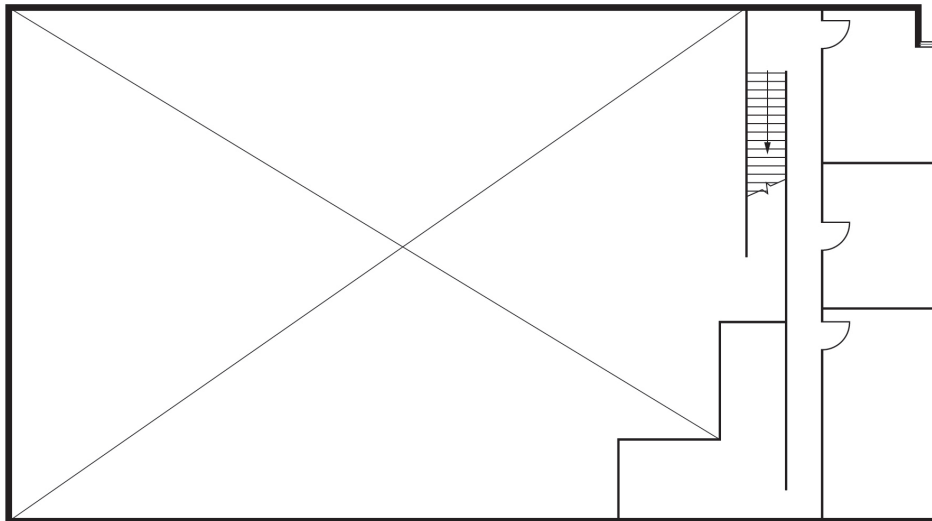
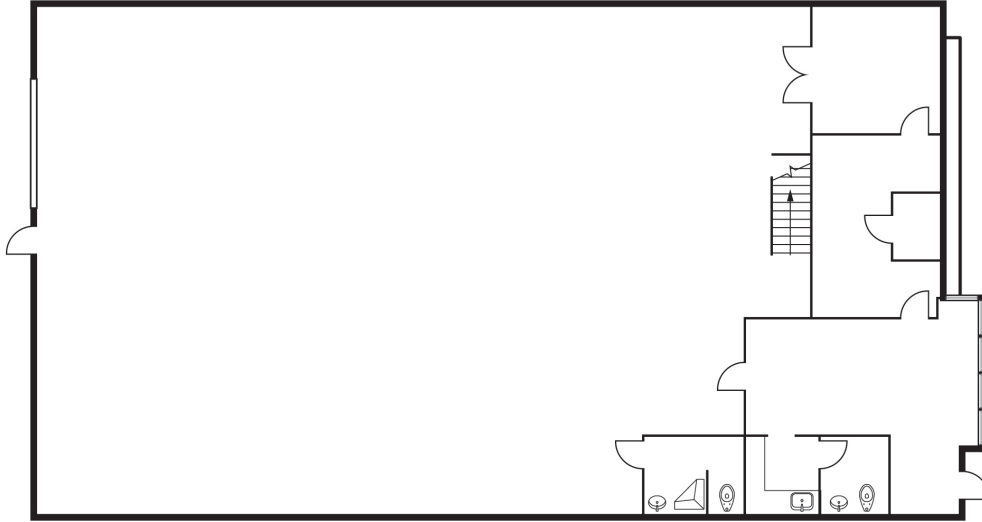


PROPERTY HIGHLIGHTS

- ±7,247 SF Industrial warehouse
- ±843 SF Office
- 22' Minimum clear height
- 1 Ground level door
- Fire sprinklered

ONTARIO PACIFIC BUSINESS CENTER

3939 E GUASTI ROAD, UNIT A • ONTARIO, CA

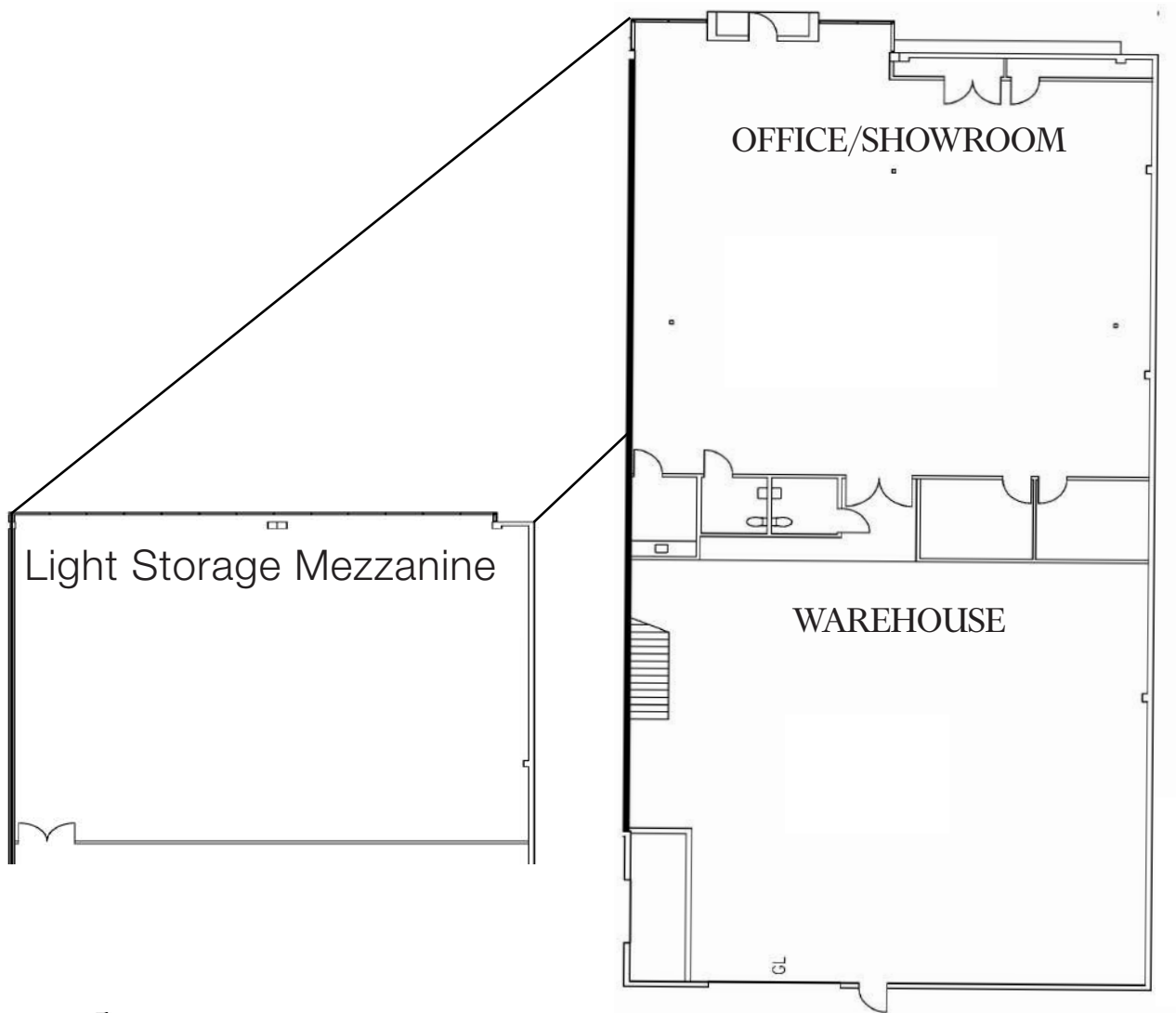


PROPERTY HIGHLIGHTS

- ±7,049 SF Industrial/Showroom unit
- ±1,132 SF Office
- ±1,291 SF of Light Storage Mezzanine
- 22' Minimum clear height
- 1 Ground level door
- Fire sprinklered

ONTARIO PACIFIC BUSINESS CENTER

3939 E GUASTI ROAD, UNIT C • ONTARIO, CA



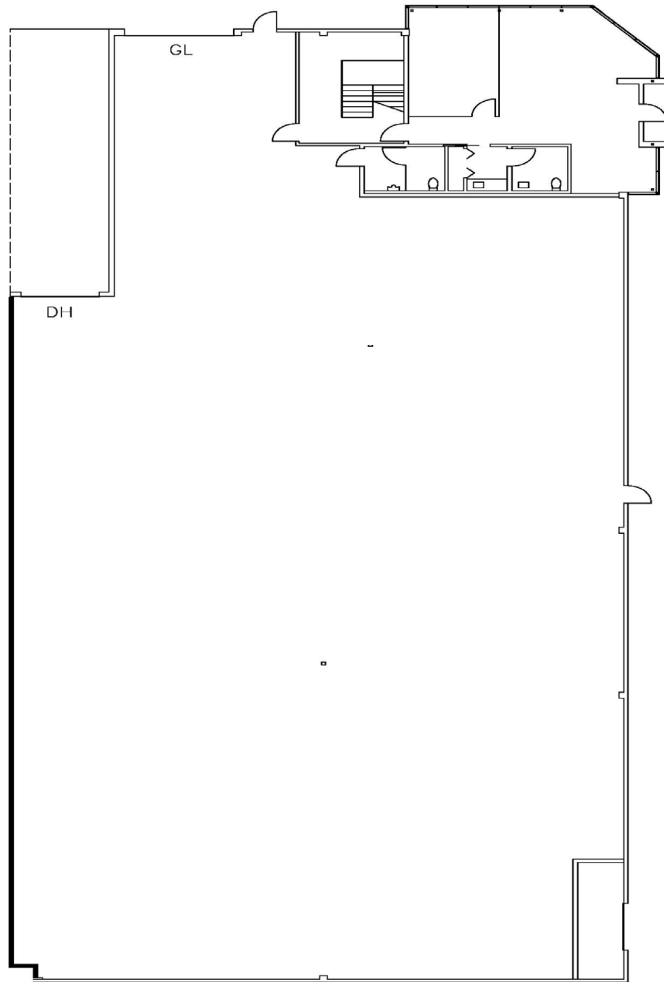
PROPERTY HIGHLIGHTS

- ±10,491 SF Industrial/Showroom unit
- ±3,639 SF of 1st floor office/showroom
- ±3,810 SF of Light Storage Mezzanine
- 22' Minimum clear height
- 1 Ground level door
- Fire sprinklered
- Freeway Frontage

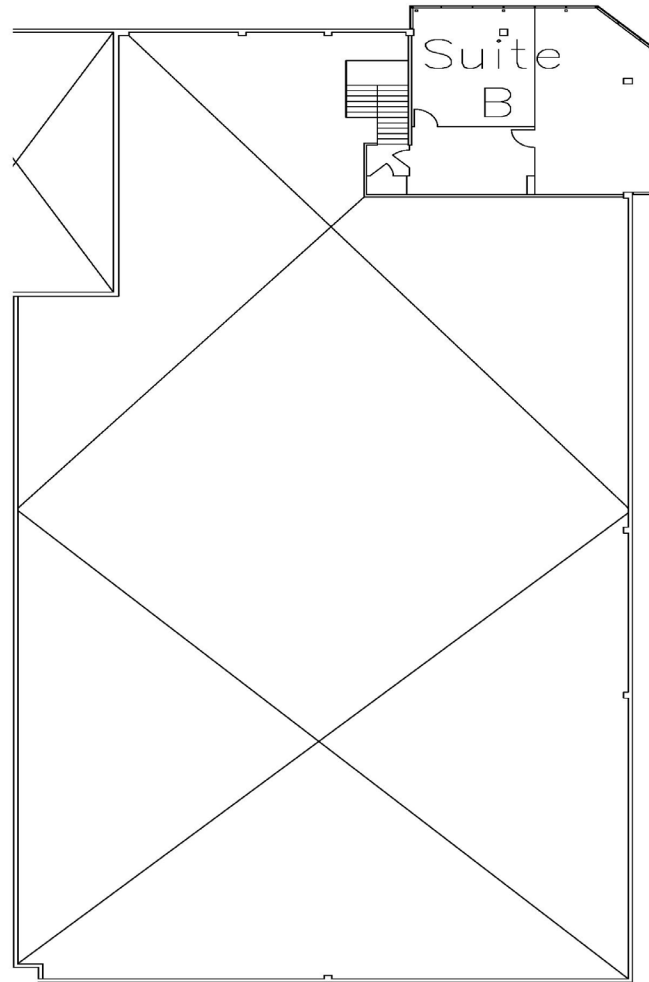
ONTARIO PACIFIC BUSINESS CENTER

3979 E GUASTI ROAD, UNIT B • ONTARIO, CA

FIRST FLOOR



SECOND FLOOR



PROPERTY HIGHLIGHTS

- ±14,200 SF Industrial warehouse
- ±1,394 SF Office
- ±1,185 SF of 2nd Story Office
- 22' Minimum clear height
- 1 Dock high door
- 1 Ground level door
- Fire sprinklered

ONTARIO PACIFIC BUSINESS CENTER



1 Miles
to 10 Freeway



2 Miles
to Interstate 15

5 Miles
to 60 Freeway

2 Miles
to Ontario International Airport

43 Miles
to John Wayne Airport

58 Miles
to LAX Airport

59 Miles
to the Ports of
Los Angeles &
Long Beach

RYAN MOORE, SIOR
Senior Vice President, Partner
rmoore@voitco.com
909.545.8011
Lic. #01821438

RYAN SHATTUCK
Associate
rshattuck@voitco.com
909.545.8013
Lic. #02228315

TIGER ORTIZ
Associate
tortiz@voitco.com
909.545.8015
Lic. #02246620

Voit
REAL ESTATE SERVICES

2400 E. Katella Avenue, Suite 750
Anaheim, CA 92806

714.978.7880 | 714.978.9431 Fax
Lic #01991785 | www.voitco.com

Licensed as Real Estate Salespersons by the DRE. The information contained herein has been obtained from sources we deem reliable. While we have no reason to doubt its accuracy, we do not guarantee it. ©2019 Voit Real Estate Services, Inc. All Rights Reserved. Lic. #01991785