

VALLEY VIEW COMMERCE CENTER

AVAILABILITY

14515 - 14565 VALLEY VIEW AVENUE
SANTA FE SPRINGS, CA 90670

1,480 - 5,075 SQUARE FEET

ADDRESS	SUITE	TOTAL SIZE SQ. FT.	OFFICE SIZE SQ. FT.	ASKING RATE PSF	MONTHLY BASE RENT	COMMENTS
14535 Valley View Avenue	J	1,740	±559	\$1.68	\$2,923	Reception, warehouse, restroom and GL door. Available 6/1/2026.
14555 Valley View Avenue	J	1,870	±376	\$1.50	\$2,805	Warehouse, office, restroom, and GL door.
14545 Valley View Avenue	C	2,045	±484	\$1.58	\$3,231	Warehouse, office, restroom, and GL door.
14515 Valley View Avenue	N	2,045	±699	\$1.58	\$3,231	Frontage warehouse, office, restroom, and GL door.
14515 Valley View Avenue	J	2,175	±1,295	\$1.50	\$3,263	Frontage suite, office, restrooms, and GL door.
14545 Valley View Avenue	A/B	5,075	±2,200	\$1.50	\$7,613	Warehouse, office, restrooms, and GL door.

There is an additional monthly CAM fee (Common Area Maintenance) of approximately \$0.12 per square foot, subject to change.

VALLEY VIEW COMMERCE CENTER

14515 - 14565 VALLEY VIEW STREET
SANTA FE SPRINGS, CA 90670

919 - 4,062
SQUARE FEET

NEW OWNERSHIP



FOR LEASE WAREHOUSE, OFFICE & RETAIL

FOR ADDITIONAL INFORMATION:

HAYDEN SOCCI
Senior Vice President | Partner
714.935.2379
hsocci@voitco.com
Lic #01705038

Voit
REAL ESTATE SERVICES

2400 E. Katella Avenue, Suite 750, Anaheim, CA 92806 • 714.978.7880 • 714.978.9431 Fax • www.VoitCo.com

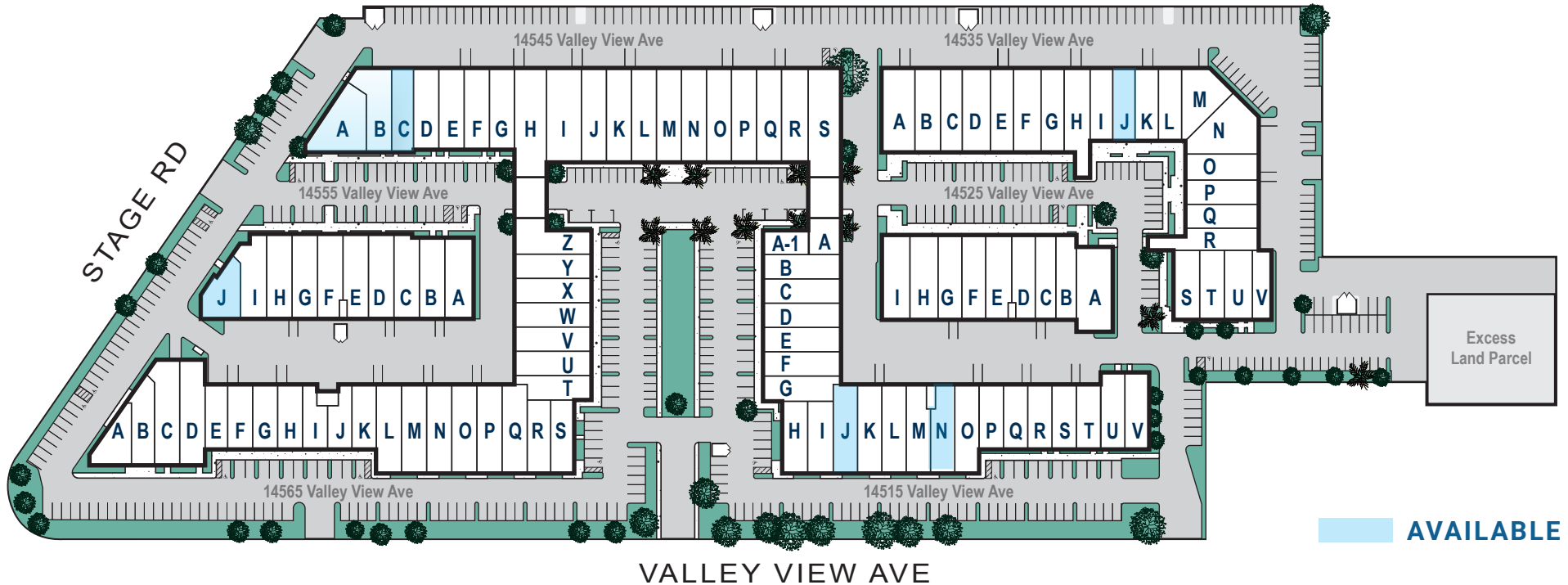
The information contained herein has been obtained from sources we deem reliable. While we have no reason to doubt its accuracy, we do not guarantee it. Licensed as Real Estate Salespersons by the DRE. ©2025 Voit Real Estate Services, Inc. All Rights Reserved. License #01991785.

VALLEY VIEW COMMERCE CENTER

SITE PLAN

14515 - 14565 VALLEY VIEW AVENUE
SANTA FE SPRINGS, CA 90670

919 - 4,062 SQUARE FEET



 AVAILABLE



Pride of Ownership Asset
Professionally Managed
Business Park




±223,295 SF Office,
Industrial & Retail Suites
(Units can be combined to
accommodate a variety of
sizes.)



Major Avenue
Frontage and
Identity



 **Excellent Access**
to Freeways



2.52 / 1,000
Parking
Ratio



Ground Level
Loading

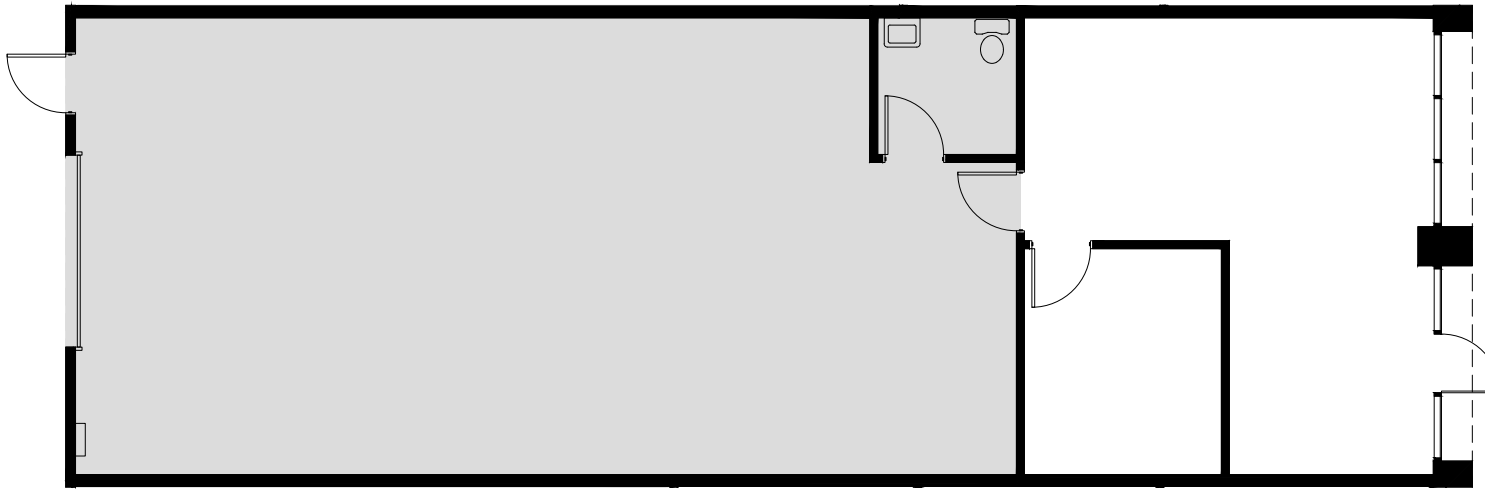


Functional Site Loading
and Circulation



Fire Sprinklers

14535 VALLEY VIEW AVENUE, SUITE J



±1,740 SQ. FT.

±559 SQ. FT.

16'
MIN.

** Floor plan is approximate and may not be to scale.*

UNIT FEATURES:



- » ±1,740 Sq. Ft. Industrial Suite
- » ±559 Sq. Ft. of Office
- » One (1) Restroom
- » One (1) Ground Level Loading Door
- » 16' of Minimum Warehouse Clearance
- » 2.52 / 1,000 Parking Ratio
- » Fire Sprinklers

FIRE SPRINKLERS



1 GL

HAYDEN SOCCI, SIOR, CCIM

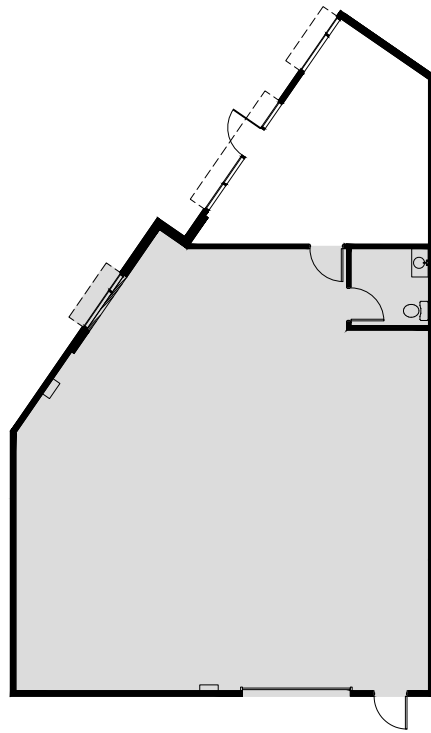
Senior Vice President | Partner
714.935.2379
hsocci@voitco.com
Lic #01705038

Voit
REAL ESTATE SERVICES

2400 E. Katella Avenue, Suite 750
Anaheim, CA 92806
www.voitco.com

The information contained herein is believed to be accurate but is not warranted as to its accuracy and may change or be updated without notice. Seller or landlord makes no representation as to the environmental condition of the property and recommends purchaser's or tenant's independent investigation. Licensed as a Real Estate Broker and Salesperson by the DRE. ©2026 Voit Real Estate Services, Inc. All Rights Reserved. Lic. #01991785

14555 VALLEY VIEW AVENUE, SUITE J



* Floor plan is approximate and may not be to scale.

UNIT FEATURES:



- » ±1,870 Sq. Ft. Industrial Suite
- » ±376 Sq. Ft. of Office
- » One (1) Restroom
- » One (1) Ground Level Loading Door
- » 16' of Minimum Warehouse Clearance
- » 2.52 / 1,000 Parking Ratio
- » Fire Sprinklers


±1,870 SQ. FT.


±376 SQ. FT.


16'
MIN.


FIRE SPRINKLERS


1 GL

HAYDEN SOCCI, SIOR, CCIM

Senior Vice President | Partner
714.935.2379
hsocci@voitco.com
Lic #01705038

Voit
REAL ESTATE SERVICES

2400 E. Katella Avenue, Suite 750
Anaheim, CA 92806
www.voitco.com

The information contained herein is believed to be accurate but is not warranted as to its accuracy and may change or be updated without notice. Seller or landlord makes no representation as to the environmental condition of the property and recommends purchaser's or tenant's independent investigation. Licensed as a Real Estate Broker and Salesperson by the DRE. ©2026 Voit Real Estate Services, Inc. All Rights Reserved. Lic. #01991785

14545 VALLEY VIEW AVENUE, SUITE C




±2,045 SQ. FT.


±484 SQ. FT.


16'
MIN.

* Floor plan is approximate and may not be to scale.

UNIT FEATURES:



- » ±2,045 Total Sq. Ft.
- » ±484 Sq. Ft. of Office
- » One (1) Restroom
- » One (1) Ground Level Loading Door
- » 2.52 / 1,000 Parking Ratio
- » Fire Sprinklers


FIRE SPRINKLERS


1 GL

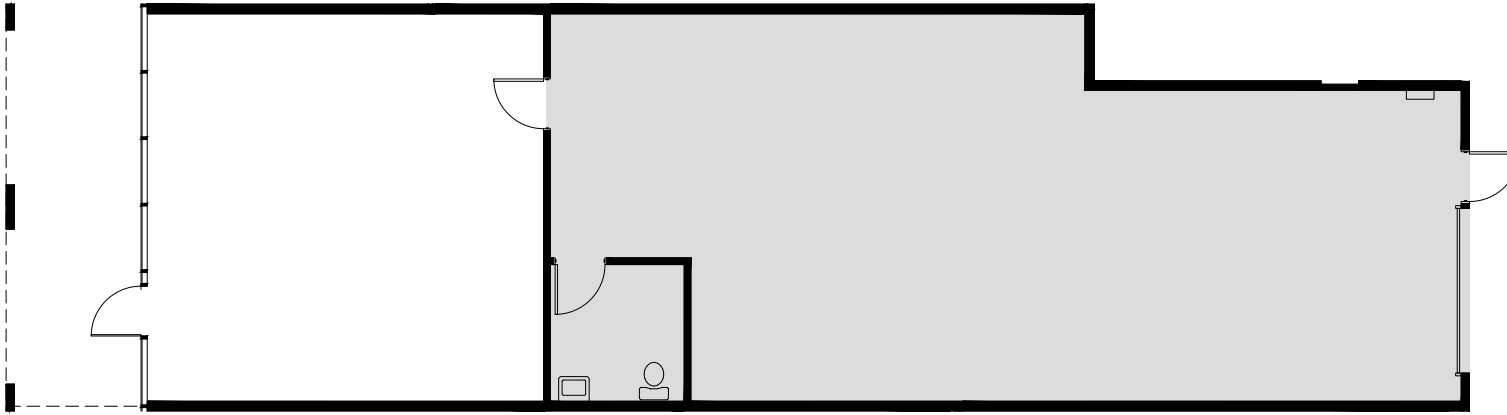
HAYDEN SOCCI, SIOR, CCIM
Senior Vice President | Partner
714.935.2379
hsocci@voitco.com
Lic #01705038

Voit
REAL ESTATE SERVICES

2400 E. Katella Avenue, Suite 750
Anaheim, CA 92806
www.voitco.com

The information contained herein is believed to be accurate but is not warranted as to its accuracy and may change or be updated without notice. Seller or landlord makes no representation as to the environmental condition of the property and recommends purchaser's or tenant's independent investigation. Licensed as a Real Estate Broker and Salesperson by the DRE. ©2026 Voit Real Estate Services, Inc. All Rights Reserved. Lic. #01991785

14515 VALLEY VIEW AVENUE, SUITE N



±2,045 SQ. FT.

±699 SQ. FT.

12'
MIN.

* Floor plan is approximate and may not be to scale.

UNIT FEATURES:



- » ±2,045 Total Sq. Ft.
- » ±699 Sq. Ft. of Office
- » Frontage Warehouse
- » One (1) Restroom
- » One (1) Ground Level Loading Door
- » 2.52 / 1,000 Parking Ratio
- » Fire Sprinklers

FIRE SPRINKLERS



1 GL

HAYDEN SOCCI, SIOR, CCIM

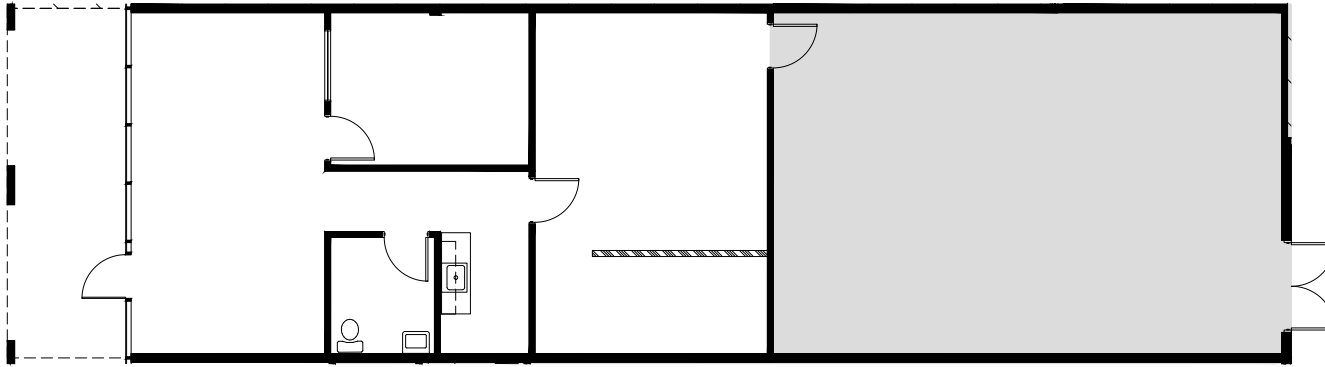
Senior Vice President | Partner
714.935.2379
hsocci@voitco.com
Lic #01705038

Voit
REAL ESTATE SERVICES


2400 E. Katella Avenue, Suite 750
Anaheim, CA 92806
www.voitco.com

The information contained herein is believed to be accurate but is not warranted as to its accuracy and may change or be updated without notice. Seller or landlord makes no representation as to the environmental condition of the property and recommends purchaser's or tenant's independent investigation. Licensed as a Real Estate Broker and Salesperson by the DRE. ©2026 Voit Real Estate Services, Inc. All Rights Reserved. Lic. #01991785

14515 VALLEY VIEW AVENUE, SUITE J




±2,175 SQ. FT.


±1,295 SQ. FT.


12'
MIN.

* Floor plan is approximate and may not be to scale.

UNIT FEATURES:



- » ±2,175 Sq. Ft. Industrial Suite
- » ±1,295 Sq. Ft. of Office
- » One (1) Restroom
- » One (1) Ground Level Loading Door
- » Coffee Bar
- » 2.52 / 1,000 Parking Ratio
- » Fire Sprinklers


FIRE SPRINKLERS



1 GL

HAYDEN SOCCI, SIOR, CCIM

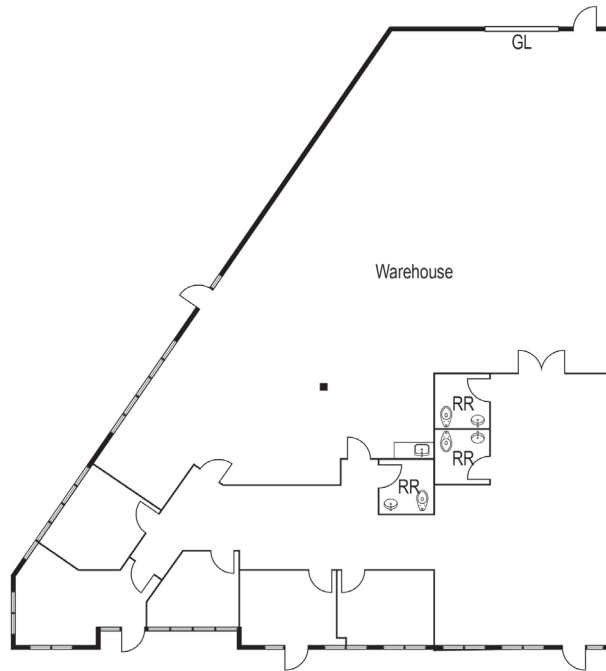
Senior Vice President | Partner
714.935.2379
hsocci@voitco.com
Lic #01705038

Voit
REAL ESTATE SERVICES

2400 E. Katella Avenue, Suite 750
Anaheim, CA 92806
www.voitco.com

The information contained herein is believed to be accurate but is not warranted as to its accuracy and may change or be updated without notice. Seller or landlord makes no representation as to the environmental condition of the property and recommends purchaser's or tenant's independent investigation. Licensed as a Real Estate Broker and Salesperson by the DRE. ©2026 Voit Real Estate Services, Inc. All Rights Reserved. Lic. #01991785

14545 VALLEY VIEW AVENUE, SUITE A/B



* Floor plan is approximate and may not be to scale.

UNIT FEATURES:



- » ±5,075 Sq. Ft. Industrial Suite
- » ±2,200 Sq. Ft. of Office
- » Restrooms
- » One (1) Ground Level Loading Door
- » 2.52 / 1,000 Parking Ratio
- » Fire Sprinklers



±5,075 SQ. FT.



±2,200 SQ. FT.



16'
MIN.



FIRE SPRINKLERS



1 GL

HAYDEN SOCCI, SIOR, CCIM

Senior Vice President | Partner
714.935.2379
hsocci@voitco.com
Lic #01705038

Voit
REAL ESTATE SERVICES

2400 E. Katella Avenue, Suite 750
Anaheim, CA 92806
www.voitco.com

The information contained herein is believed to be accurate but is not warranted as to its accuracy and may change or be updated without notice. Seller or landlord makes no representation as to the environmental condition of the property and recommends purchaser's or tenant's independent investigation. Licensed as a Real Estate Broker and Salesperson by the DRE. ©2026 Voit Real Estate Services, Inc. All Rights Reserved. Lic. #01991785



PROPERTY PHOTOS

