

IRVINE HUGHES



FOR LEASE

For more information, please contact:

TED ROMMEL

Senior Vice President

License #00830845

949.790.3117

trommel@leeirvine.com

 **LEE &
ASSOCIATES**

COMMERCIAL REAL ESTATE SERVICES

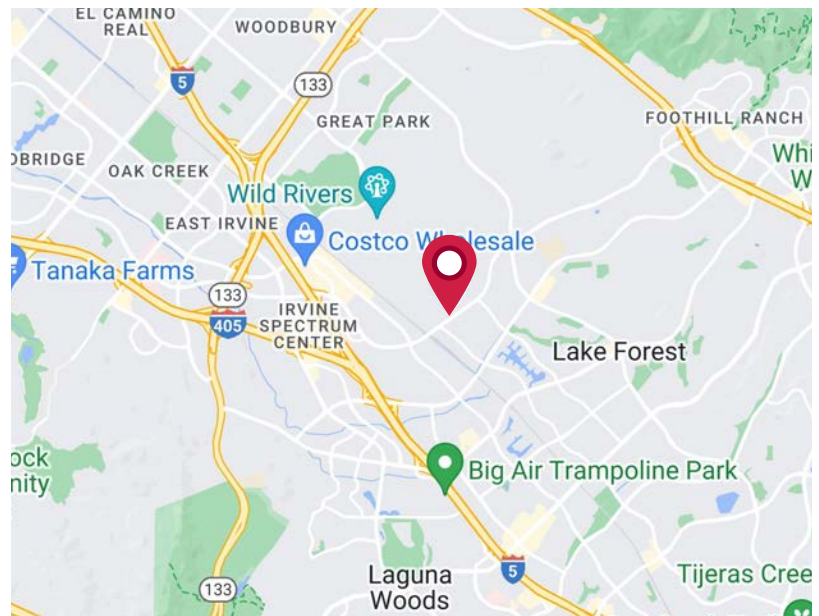
IRVINE HUGHES



PROPERTY DESCRIPTION

- Ground level flex/warehouse and 2nd floor office space
- Free on-site parking
- Fiber optic served
- Office and flex suites available
- Professional, business park environment
- Private balconies
- Suite specific signage
- Excellent freeway access
- Prime location in Irvine Spectrum

LOCATION OVERVIEW



TED ROMMEL

Senior Vice President
License #00830845
949.790.3117
trommel@leeirvine.com

10, 12, 14, 16 HUGHES, IRVINE, CALIFORNIA

GROUND FLOOR FLEX/WAREHOUSE SPACES

SUITE	TOTAL SF	% OFFICE SPACE	LEASE RATE	COMMENTS
10 Hughes, Building A				
A-104	±1,690	50%	\$1.80 NNN	Available Now
A-107	±1,820	30%	\$1.80 NNN	Available Now
14 Hughes, Building B				
B-102	±2,326	30%	\$1.80 NNN	Available Now
B-102/103	±3,284	30%	\$1.80 NNN	Available Now
16 Hughes, Building C				
C-102	±1,560	30%	\$1.80 NNN	Available Now
C-106	±2,340	80%	\$1.80 NNN	Available 6/1/2025

Current Net Expenses For Ground Floor \$0.38 Per Square Foot

SECOND FLOOR WALK-UP OFFICE SPACES

SUITE	TOTAL SF	% OFFICE SPACE	LEASE RATE	COMMENTS
10 Hughes, Building A				
*A-200	±1,820	100%	\$1.35 NNN	Available Now
*A-206	±1,697	100%	\$1.35 NNN	Available Now
*A-207	±1,700	100%	\$1.35 NNN	Available Now
*A-206/207	±3,397	100%	\$1.35 NNN	Available Now
14 Hughes, Building B				
*B-201	±1,690	100%	\$1.15 NNN	Available Now
*B-206	±1,250	100%	\$1.35 NNN	Available Now

Current Net Expenses For Second Floor Office Spaces \$0.38 Per Square Foot

**Possible 3 Months Free With a Two Year Lease on all Second Floor Office Spaces*

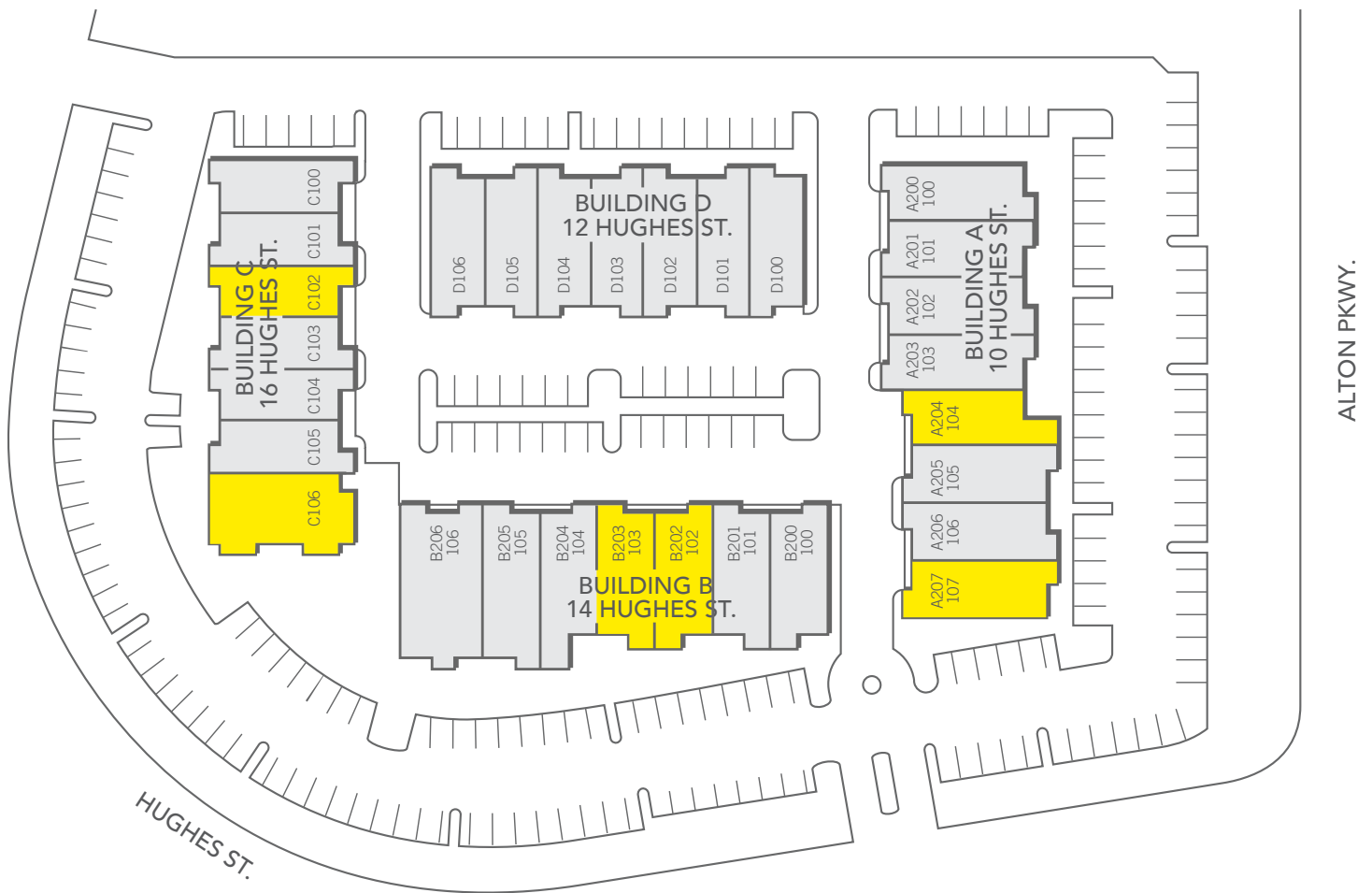
**\$1.00 Per Square Foot Broker Bonus on All Second Floor Office Spaces*

For more information, please contact:

TED ROMMEL
Senior Vice President
License #00830845
949.790.3117
trommel@leeirvine.com



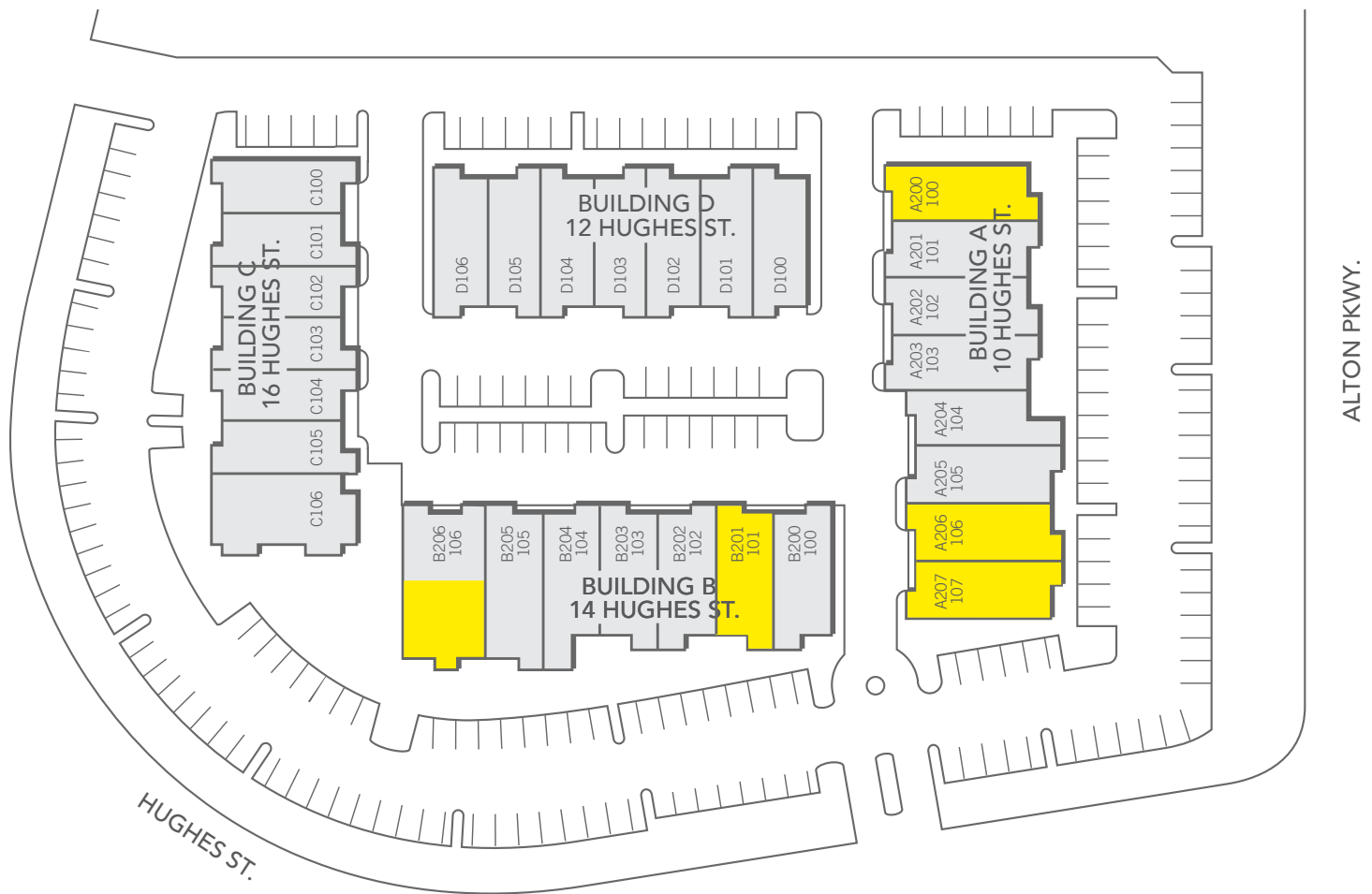
PROPERTY SITE PLAN GROUND FLOOR



For more information, please contact:

TED ROMMEL
Senior Vice President
License #00830845
949.790.3117
trommel@leeirvine.com

PROPERTY SITE PLAN SECOND FLOOR



For more information, please contact:

TED ROMMEL
Senior Vice President
License #00830845
949.790.3117
trommel@leeirvine.com

10 HUGHES, IRVINE

FIRST FLOOR

BUILDING A



For more information, please contact:

TED ROMMEL
Senior Vice President
License #00830845
949.790.3117
trommel@leeirvine.com

12 HUGHES, IRVINE

FIRST FLOOR

BUILDING D

D106

D105

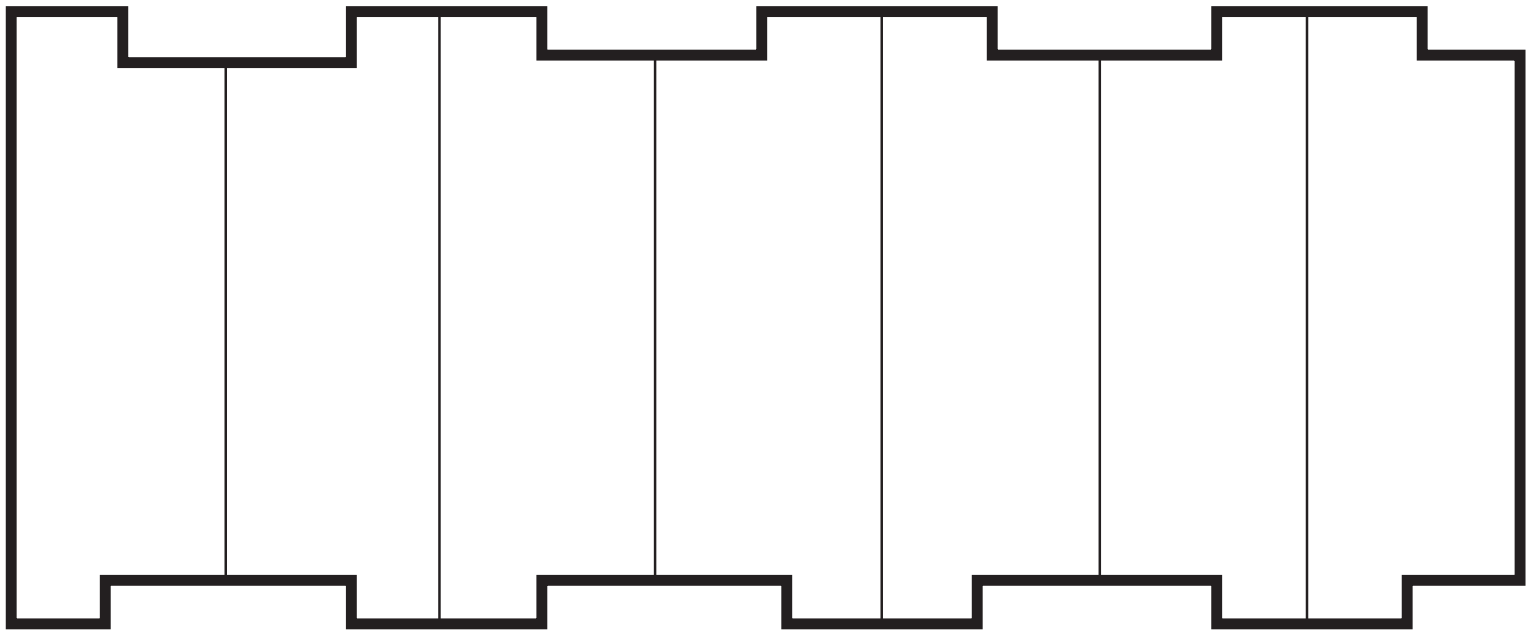
D104

D103

D102

D101

D100



For more information, please contact:

TED ROMMEL

Senior Vice President

License #00830845

949.790.3117

trommel@leeirvine.com



COMMERCIAL REAL ESTATE SERVICES

14 HUGHES, IRVINE

FIRST FLOOR

BUILDING B



For more information, please contact:

TED ROMMEL
Senior Vice President
License #00830845
949.790.3117
trommel@leeirvine.com

16 HUGHES, IRVINE

FIRST FLOOR

BUILDING C



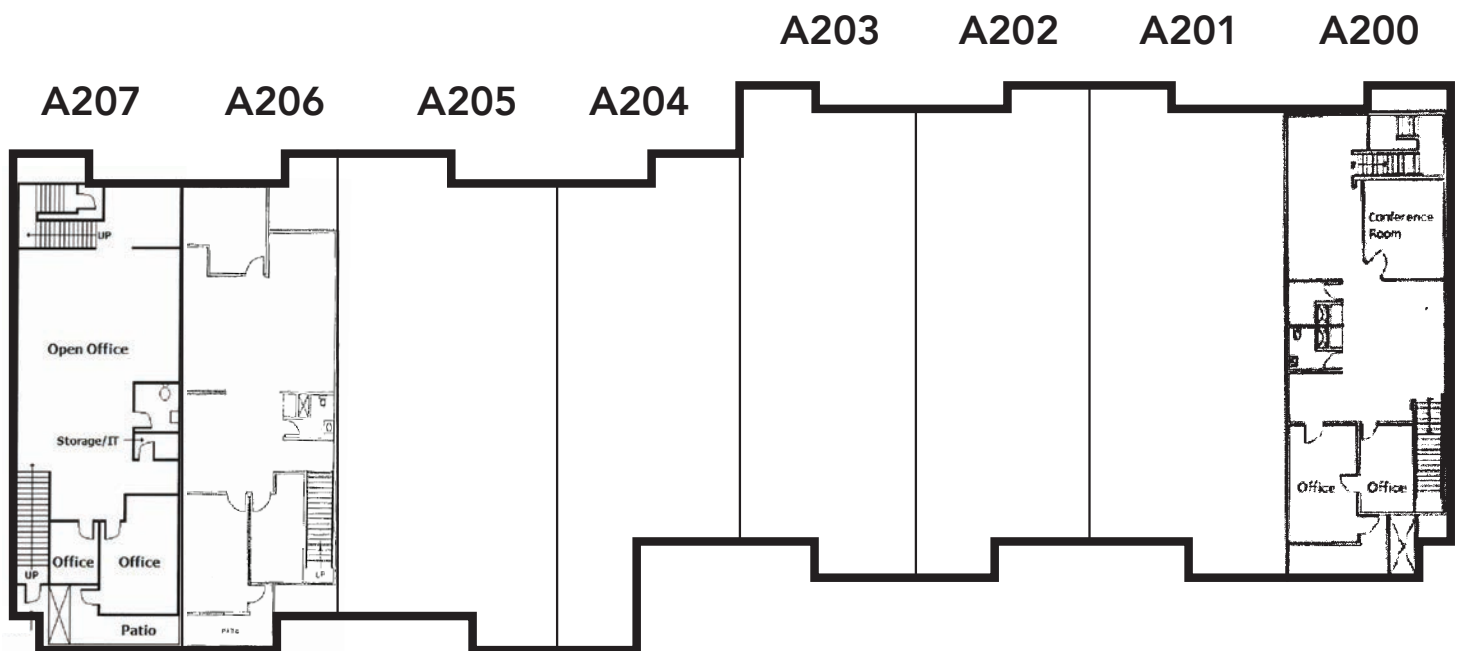
For more information, please contact:

TED ROMMEL
Senior Vice President
License #00830845
949.790.3117
trommel@leeirvine.com

10 HUGHES, IRVINE

SECOND FLOOR

BUILDING A



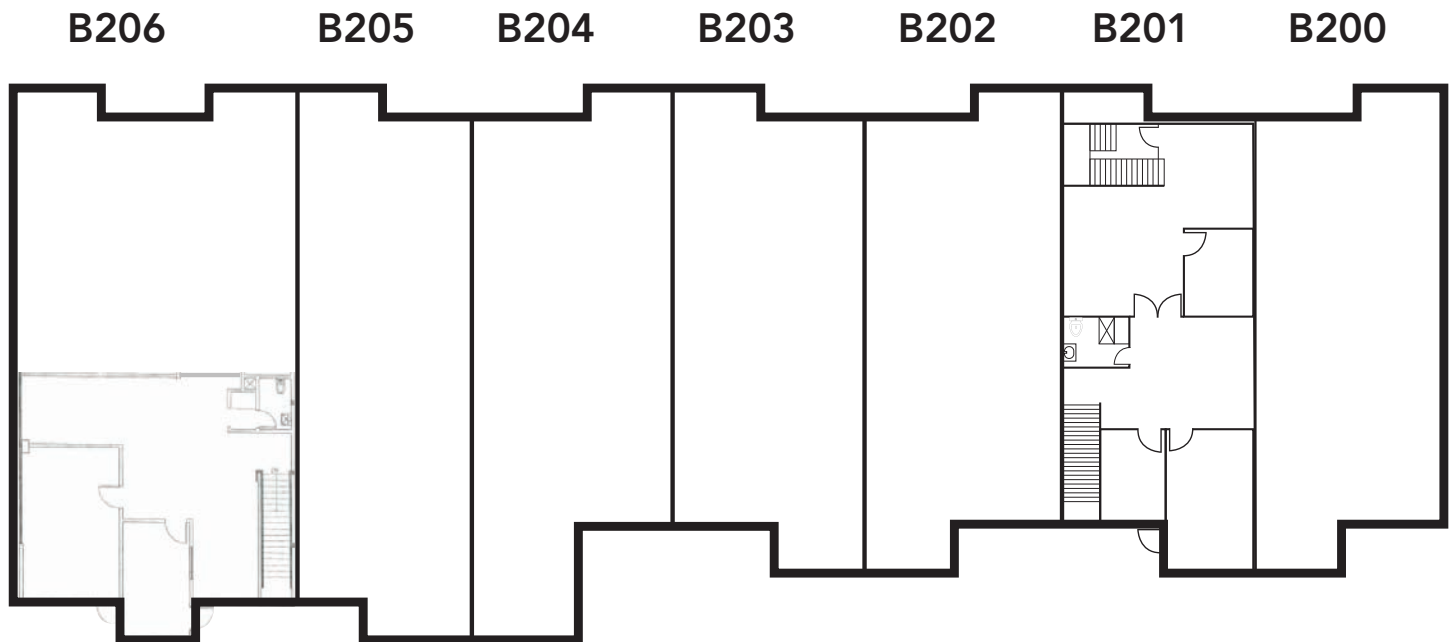
For more information, please contact:

TED ROMMEL
Senior Vice President
License #00830845
949.790.3117
trommel@leeirvine.com

14 HUGHES, IRVINE

SECOND FLOOR

BUILDING B



For more information, please contact:

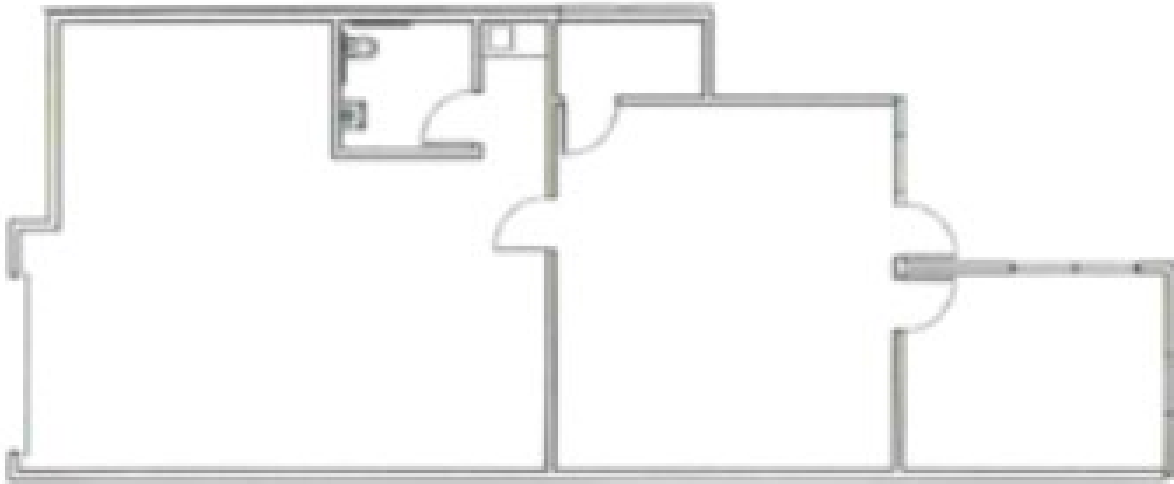
TED ROMMEL
Senior Vice President
License #00830845
949.790.3117
trommel@leeirvine.com

10 HUGHES, IRVINE

BUILDING A

SUITE A-104

1,690 SF



For more information, please contact:

TED ROMMEL

Senior Vice President

License #00830845

949.790.3117

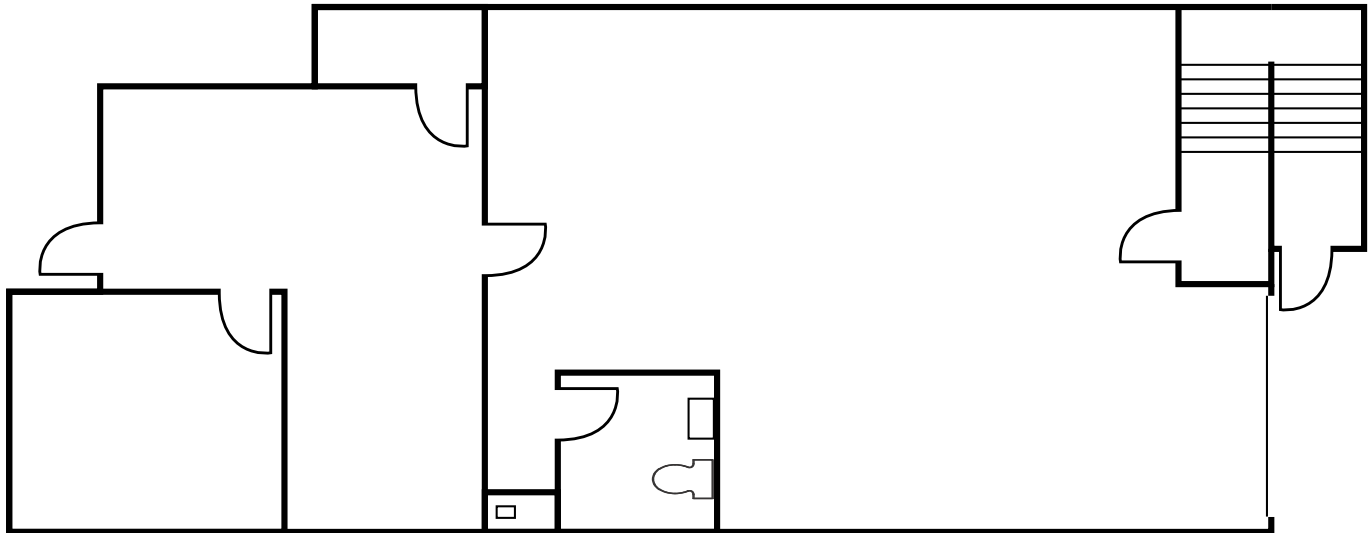
trommel@leeirvine.com

10 HUGHES, IRVINE

BUILDING A

SUITE A-107

1,820 SF



For more information, please contact:

TED ROMMEL

Senior Vice President

License #00830845

949.790.3117

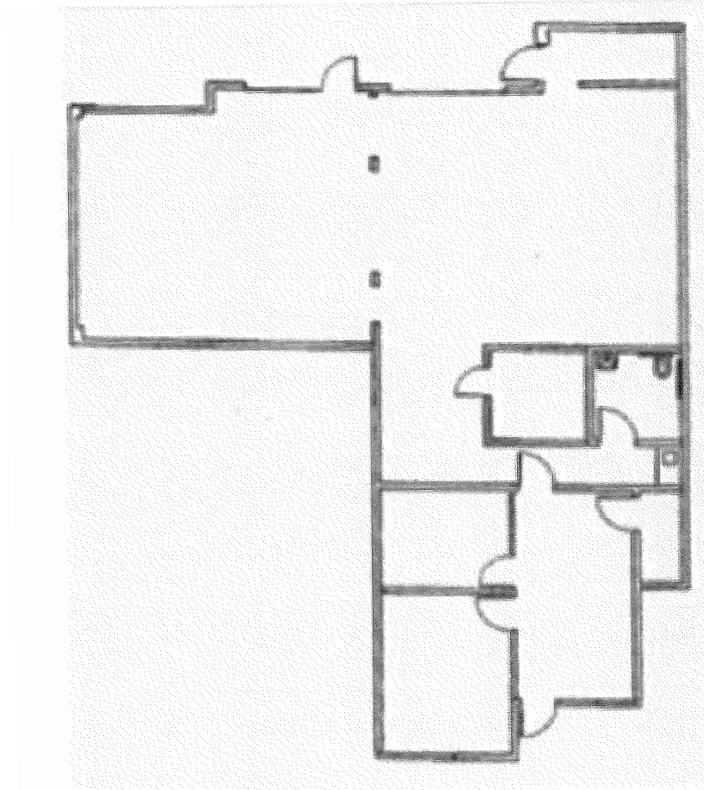
trommel@leeirvine.com

 **LEE &
ASSOCIATES**

COMMERCIAL REAL ESTATE SERVICES

14 HUGHES, IRVINE

BUILDING B
SUITE B-102
2,326 SF



For more information, please contact:

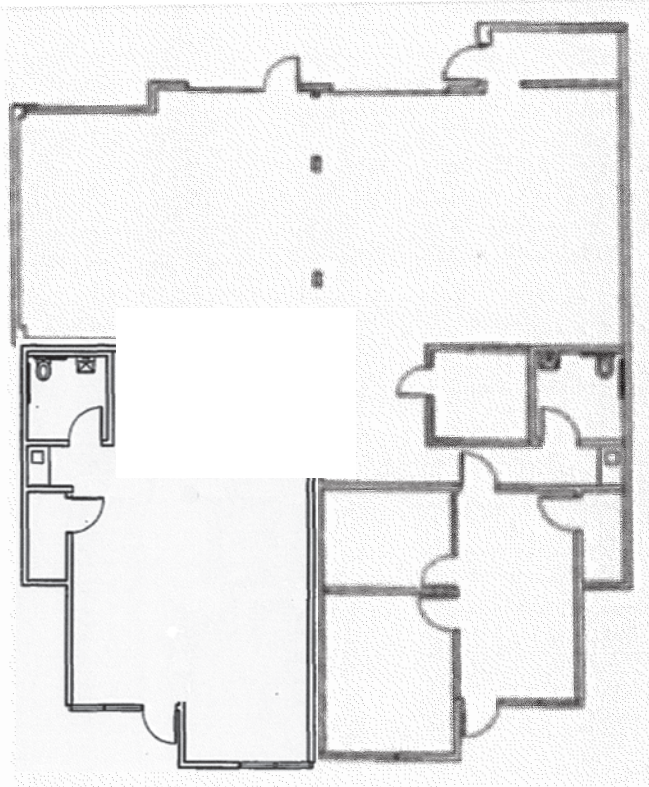
TED ROMMEL
Senior Vice President
License #00830845
949.790.3117
trommel@leeirvine.com

14 HUGHES, IRVINE

BUILDING B

SUITE B-102/103

3,284 SF



For more information, please contact:

TED ROMMEL

Senior Vice President

License #00830845

949.790.3117

trommel@leeirvine.com

 **LEE &
ASSOCIATES**

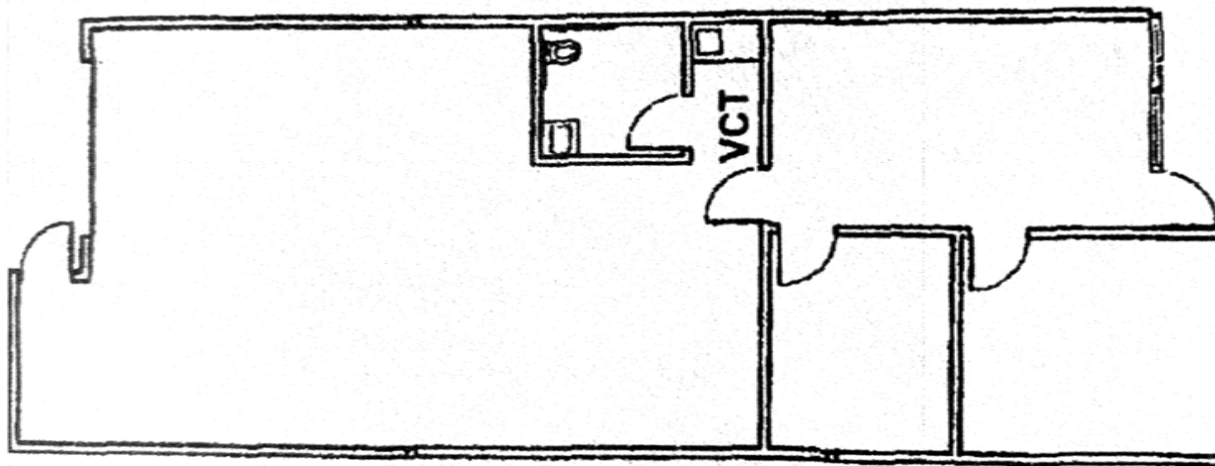
COMMERCIAL REAL ESTATE SERVICES

16 HUGHES, IRVINE

BUILDING C

SUITE C-102

1,560 SF



For more information, please contact:

TED ROMMEL

Senior Vice President

License #00830845

949.790.3117

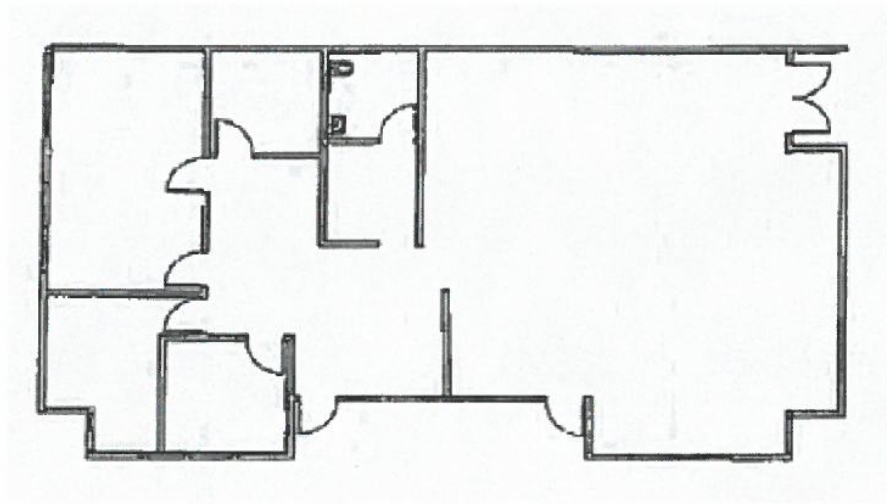
trommel@leeirvine.com

16 HUGHES, IRVINE

BUILDING C

SUITE C-106

2,340 SF



For more information, please contact:

TED ROMMEL

Senior Vice President

License #00830845

949.790.3117

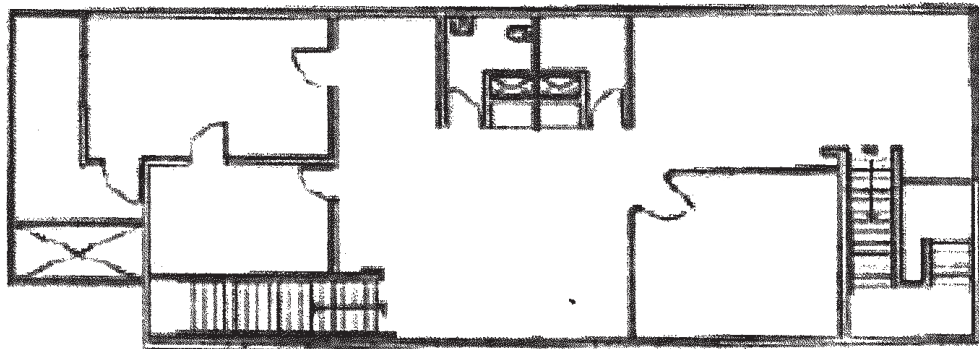
trommel@leeirvine.com

10 HUGHES, IRVINE

BUILDING A

SUITE A-200

1,820 SF



For more information, please contact:

TED ROMMEL

Senior Vice President

License #00830845

949.790.3117

trommel@leeirvine.com

 **LEE &
ASSOCIATES**

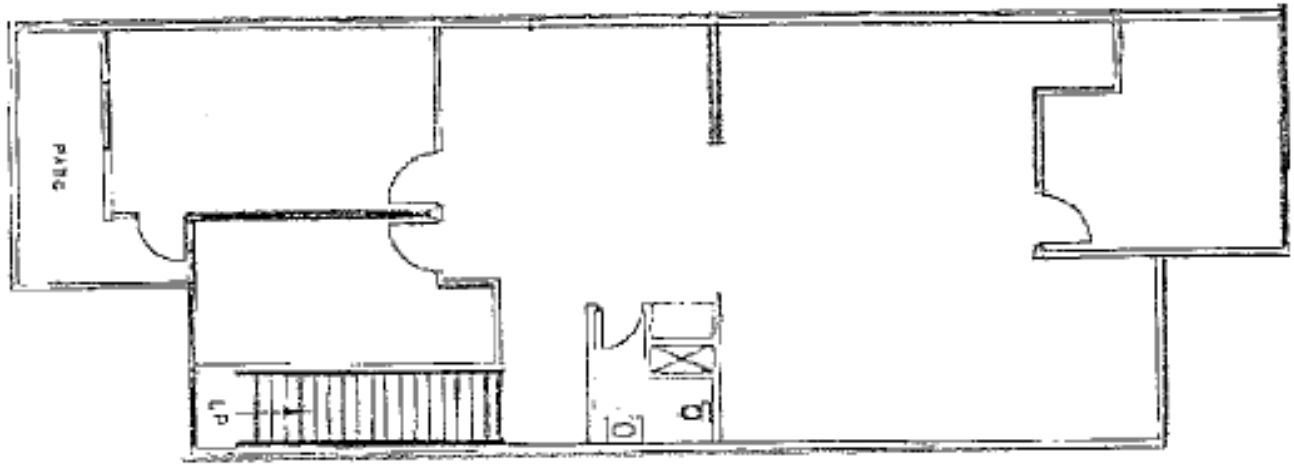
COMMERCIAL REAL ESTATE SERVICES

10 HUGHES, IRVINE

BUILDING A

SUITE A-206

1,697 SF



For more information, please contact:

TED ROMMEL

Senior Vice President

License #00830845

949.790.3117

trommel@leeirvine.com

 **LEE &
ASSOCIATES**

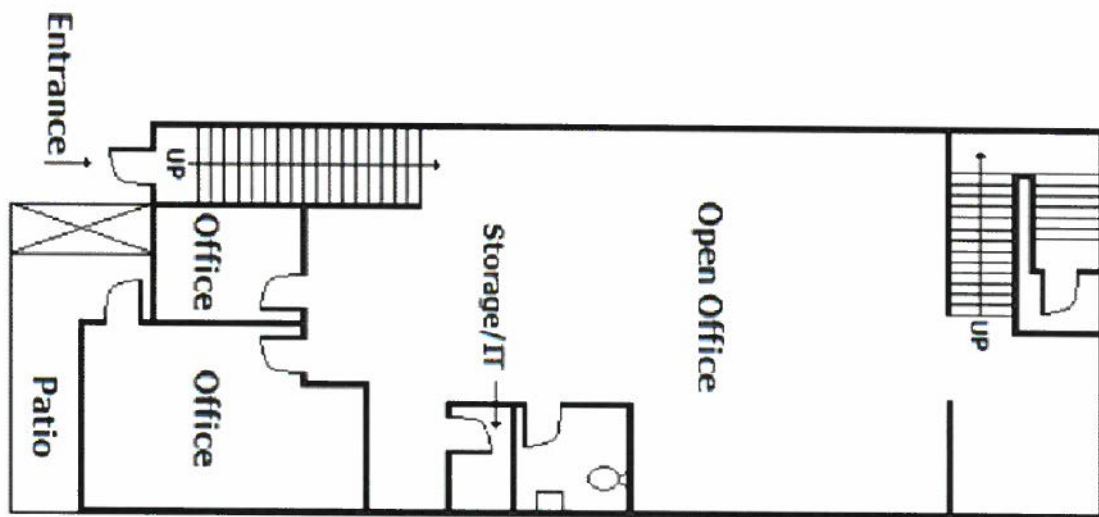
COMMERCIAL REAL ESTATE SERVICES

10 HUGHES, IRVINE

BUILDING A

SUITE A-207

1,700 SF



For more information, please contact:

TED ROMMEL

Senior Vice President

License #00830845

949.790.3117

trommel@leeirvine.com



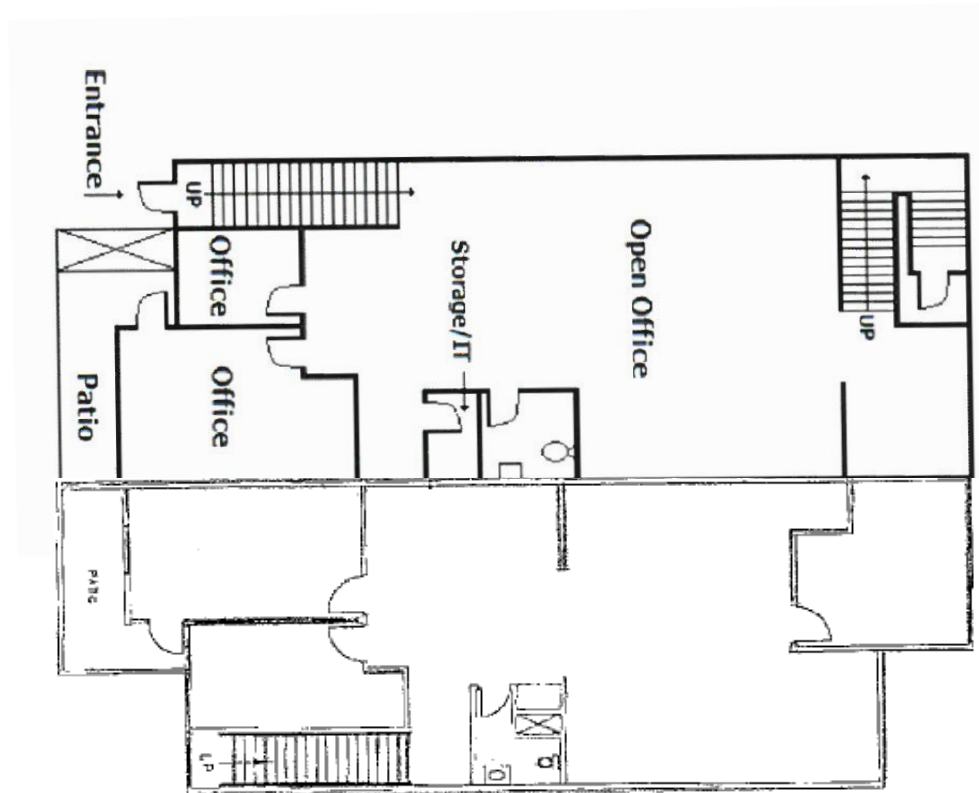
COMMERCIAL REAL ESTATE SERVICES

10 HUGHES, IRVINE

BUILDING A

SUITE A-206/207

3,397 SF



For more information, please contact:

TED ROMMEL

Senior Vice President

License #00830845

949.790.3117

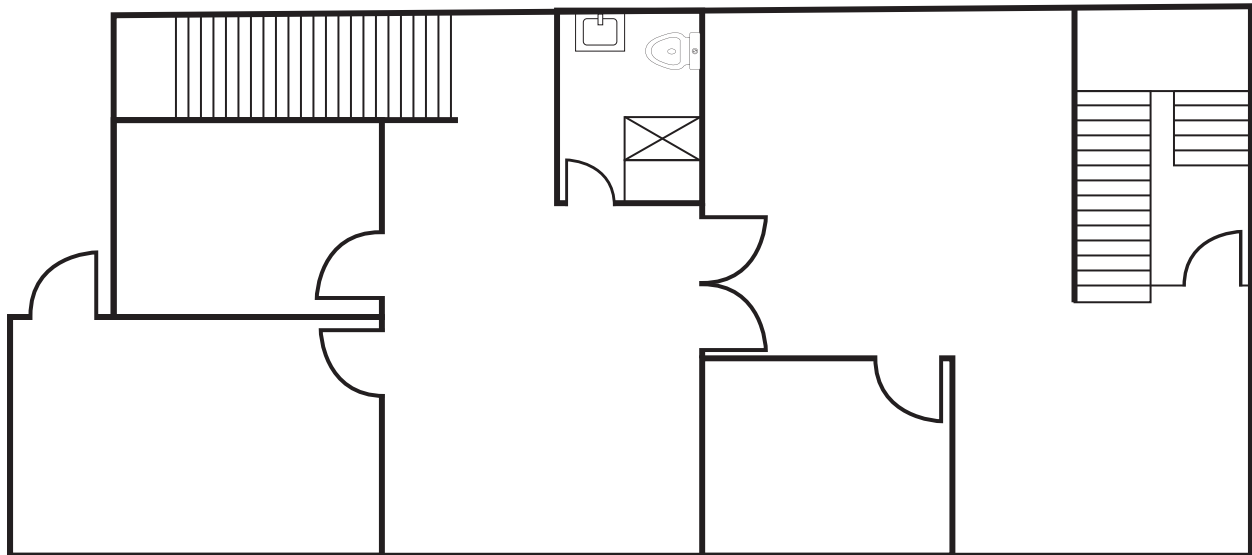
trommel@leeirvine.com

14 HUGHES, IRVINE

BUILDING B

SUITE B-201

1,690 SF



For more information, please contact:

TED ROMMEL

Senior Vice President

License #00830845

949.790.3117

trommel@leeirvine.com

 **LEE &
ASSOCIATES**

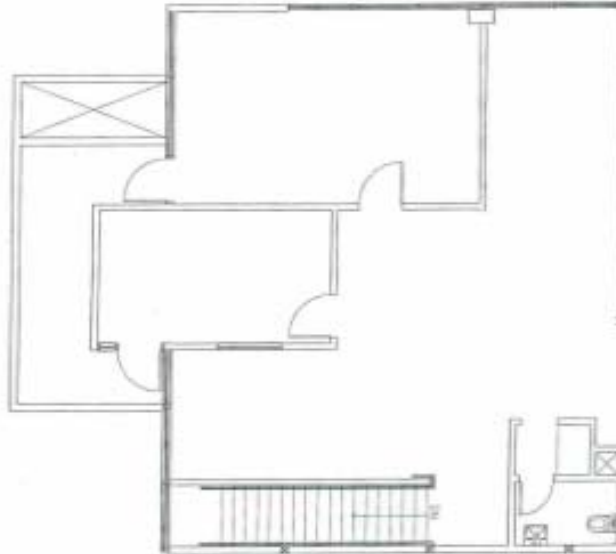
COMMERCIAL REAL ESTATE SERVICES

14 HUGHES, IRVINE

BUILDING B

SUITE B-206

1,250 SF



For more information, please contact:

TED ROMMEL

Senior Vice President

License #00830845

949.790.3117

trommel@leeirvine.com

 **LEE &
ASSOCIATES**

COMMERCIAL REAL ESTATE SERVICES