

PLAZA DE ORO (EXECUTIVE SUITES)

OFFICE FOR LEASE

— 520 N. Brookhurst Street, Anaheim, CA

LEE & ASSOCIATES

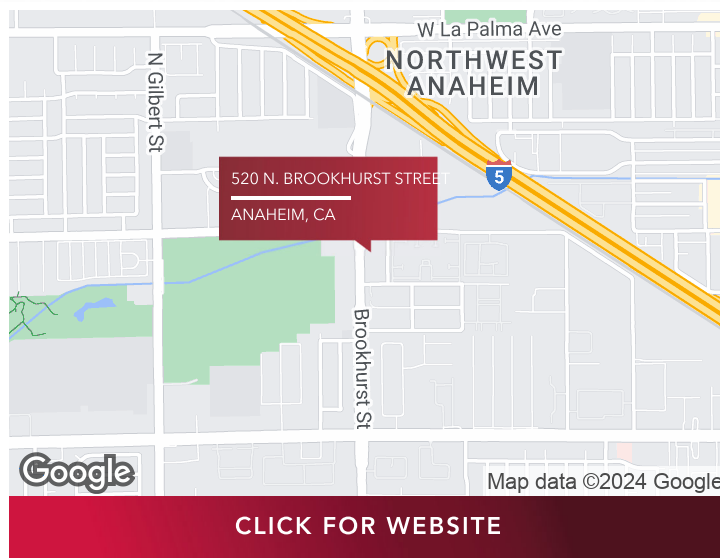
COMMERCIAL REAL ESTATE SERVICES

±28,627 SF



PROPERTY HIGHLIGHTS

- Small Suites
- Competitive Lease
- Great Freeway Access
- Near Amenities
- Covered Parking
- Solar Panel Electrical System
- CUP for Auto Broker Use



[CLICK FOR WEBSITE](#)

Jim Hawkins

PRINCIPAL

+714.564.7126

jhawkins@lee-associates.com

DRE# 00833274

Phil Fridd

PRINCIPAL

+714.564.7124

pfridd@lee-associates.com

DRE# 01000952

1004 West Taft Avenue, Suite 150 | Orange, CA 92865 | 714.647.9100 | lee-associates.com/orange/ | DRE# 01011260



All information furnished regarding property for sale, rental or financing is from sources deemed reliable, but no warranty or representation is made to the accuracy thereof and same is submitted to errors, omissions, change of price, rental or other conditions prior to sale, lease or financing or withdrawal without notice. No liability of any kind is to be imposed on the broker herein.

PLAZA DE ORO (EXECUTIVE SUITES)

ADDITIONAL PHOTOS

— 520 N. Brookhurst Street, Anaheim, CA

LEE & ASSOCIATES
COMMERCIAL REAL ESTATE SERVICES
±28,627 SF



Jim Hawkins

PRINCIPAL
+714.564.7126
jhawkins@lee-associates.com
DRE# 00833274

Phil Fridd

PRINCIPAL
+714.564.7124
pfridd@lee-associates.com
DRE# 01000952

1004 West Taft Avenue, Suite 150 | Orange, CA 92865 | 714.647.9100 | lee-associates.com/orange/ | DRE# 01011260



All information furnished regarding property for sale, rental or financing is from sources deemed reliable, but no warranty or representation is made to the accuracy thereof and same is submitted to errors, omissions, change of price, rental or other conditions prior to sale, lease or financing or withdrawal without notice. No liability of any kind is to be imposed on the broker herein.

PLAZA DE ORO (EXECUTIVE SUITES)

EXECUTIVE SPACES

— 520 N. Brookhurst Street, Anaheim, CA

LEE & ASSOCIATES

COMMERCIAL REAL ESTATE SERVICES

±28,627 SF

LEASE TYPE

| MG

LEASE TERM

| Negotiable

LEASE RATE

| \$500.00 - \$1,400.00 per month



SUITE	TENANT	LEASE TYPE	LEASE RATE
Executive Suite - Suite 134	Available	Modified Gross	\$800 per month
Executive Suite - Suite 132	Available	Modified Gross	\$500 per month
Executive Suite - Suite 135	Available	Modified Gross	\$750 per month
Executive Suite #3	Available	Modified Gross	\$500 per month
Executive Suite #6	Available	Modified Gross	\$1,400 per month

Jim Hawkins

PRINCIPAL

+714.564.7126

jhawkins@lee-associates.com

DRE# 00833274

Phil Fridd

PRINCIPAL

+714.564.7124

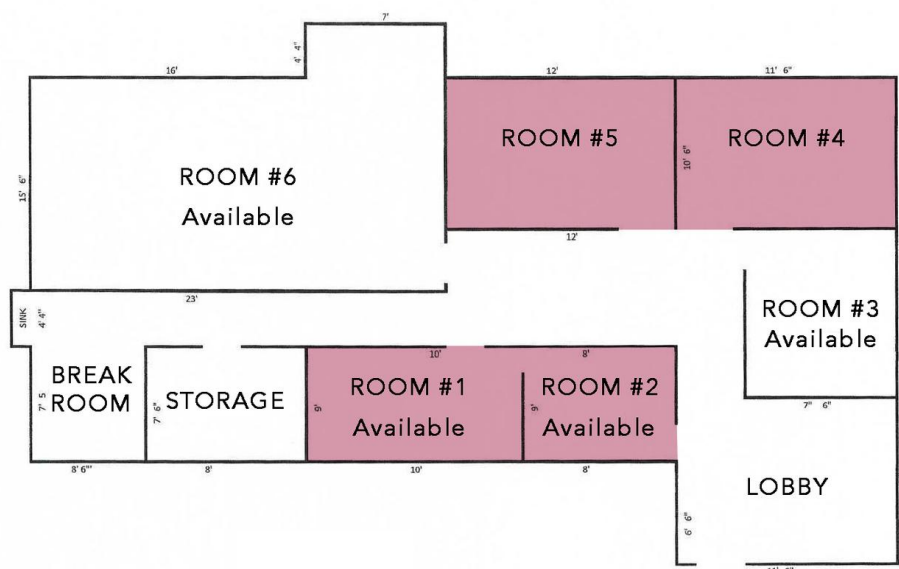
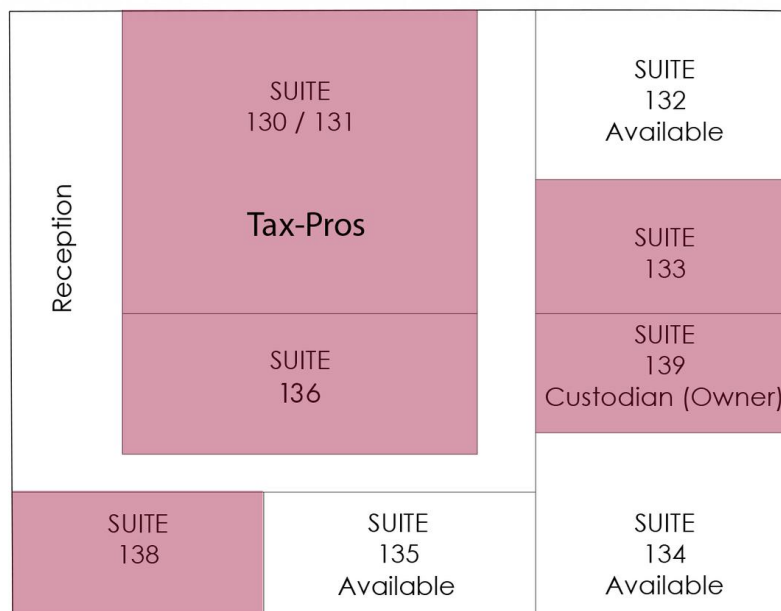
pfridd@lee-associates.com

DRE# 01000952

1004 West Taft Avenue, Suite 150 | Orange, CA 92865 | 714.647.9100 | lee-associates.com/orange/ | DRE# 01011260



All information furnished regarding property for sale, rental or financing is from sources deemed reliable, but no warranty or representation is made to the accuracy thereof and same is submitted to errors, omissions, change of price, rental or other conditions prior to sale, lease or financing or withdrawal without notice. No liability of any kind is to be imposed on the broker herein.

EXECUTIVE SUITE 220 - 1 through 6**EXECUTIVE SUITES - East**

(Not to Scale)

Jim Hawkins**PRINCIPAL**

+714.564.7126

jhawkins@lee-associates.com

DRE# 00833274

Phil Fridd**PRINCIPAL**

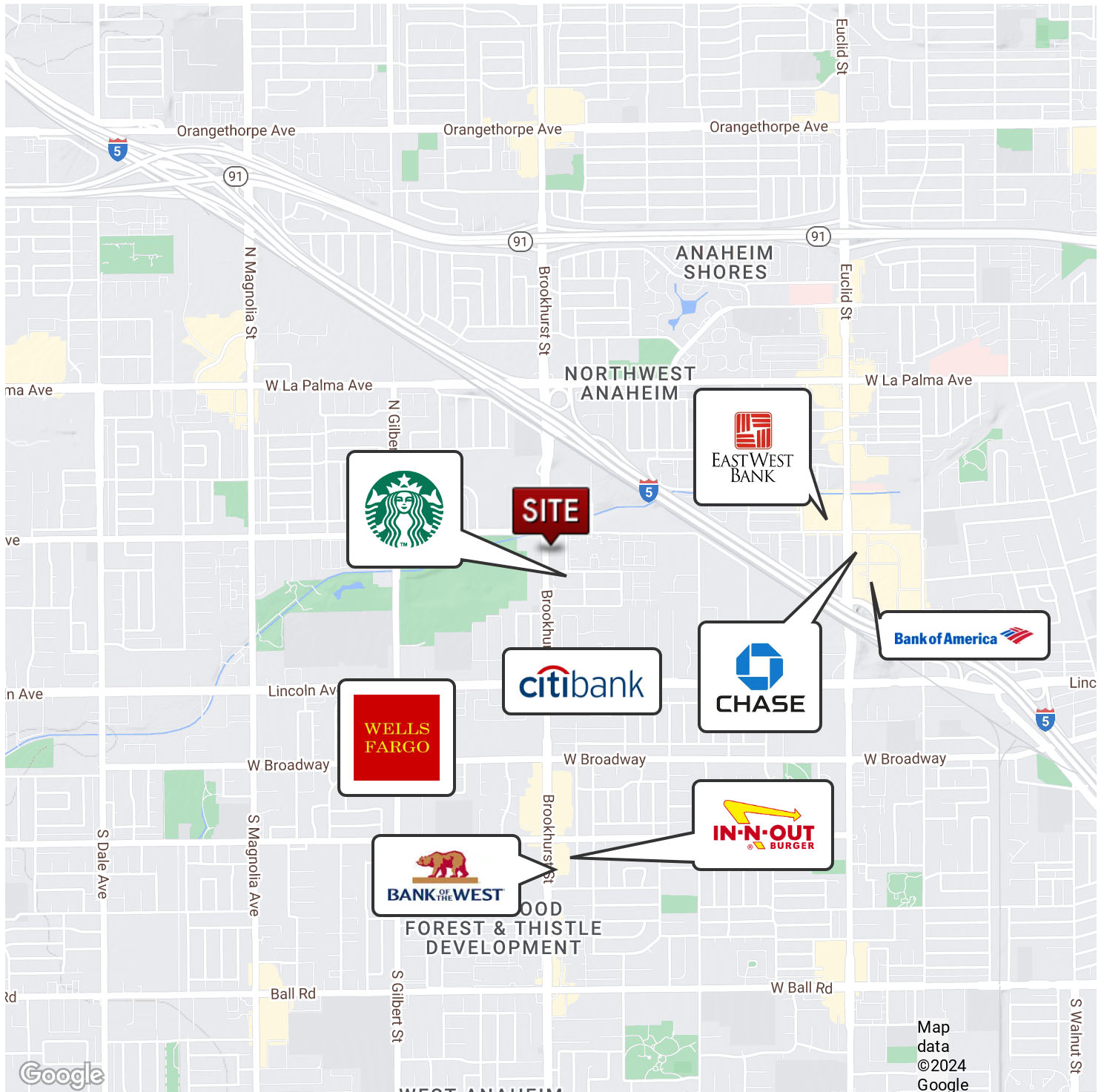
+714.564.7124

pfridd@lee-associates.com

DRE# 01000952

RETAILER MAP

520 N. Brookhurst Street, Anaheim, CA



Jim Hawkins

PRINCIPAL

+714.564.7126

jhawkins@lee-associates.com

DRE# 00833274

Phil Fridd

PRINCIPAL

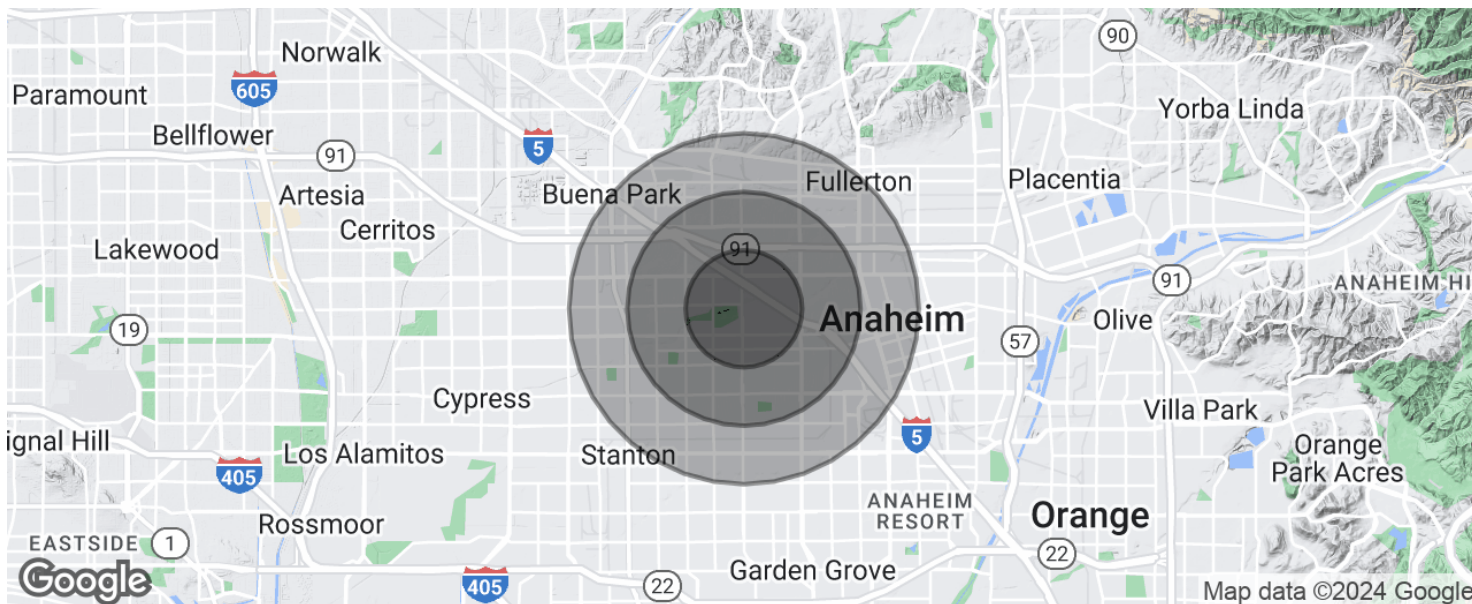
+714.564.7124

pfridd@lee-associates.com

DRE# 01000952

DEMOGRAPHICS MAP & REPORT

520 N. Brookhurst Street, Anaheim, CA



POPULATION	1 MILE	2 MILES	3 MILES
Total population	33,787	130,423	279,108
Median age	31.6	32.6	32.4
Median age (Male)	30.8	31.7	31.6
Median age (Female)	33.0	33.6	33.4
HOUSEHOLDS & INCOME	1 MILE	2 MILES	3 MILES
Total households	9,734	37,862	80,876
# of persons per HH	3.5	3.4	3.5
Average HH income	\$63,318	\$65,421	\$66,701
Average house value	\$443,451	\$464,415	\$474,004

* Demographic data derived from 2020 ACS - US Census

Jim Hawkins

PRINCIPAL

+714.564.7126

jhawkins@lee-associates.com

DRE# 00833274

Phil Fridd

PRINCIPAL

+714.564.7124

pfridd@lee-associates.com

DRE# 01000952