

FOR LEASE >>

±22,585 Square Feet

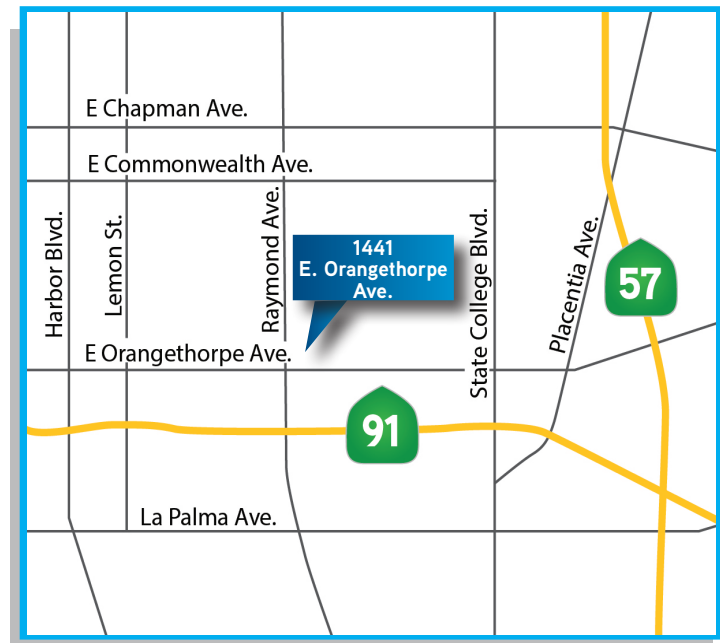


1441 E. ORANGETHORPE AVENUE | Fullerton, CA

Major Street
Visibility

Property Features:

- > Part of a Larger 99,753 SF Manufacturing / Distribution Building
- > ±2,639 SF of HVAC Office Area
- > One (1) Dock High Loading Door
- > One (1) Ground Level Loading Door (18'x20')
- > Power: 1,000 Amps, 277 /480 Volt (verify)
- > Fully Fire Sprinklered (verify calculations)
- > 24' Minimum Warehouse Ceiling Height
- > Energy Efficient Lighting
- > Major Street Visibility on Orangethorpe Avenue
- > Excellent Fullerton Location
- > Immediate Access to the Riverside (91) and Orange (57) Freeways. Close proximity to the Santa Ana (5), Costa Mesa (55), and Garden Grove (22) Freeways.



CHUCK WILSON
949 724 5502
chuck.wilson@colliers.com
License No. 00947221

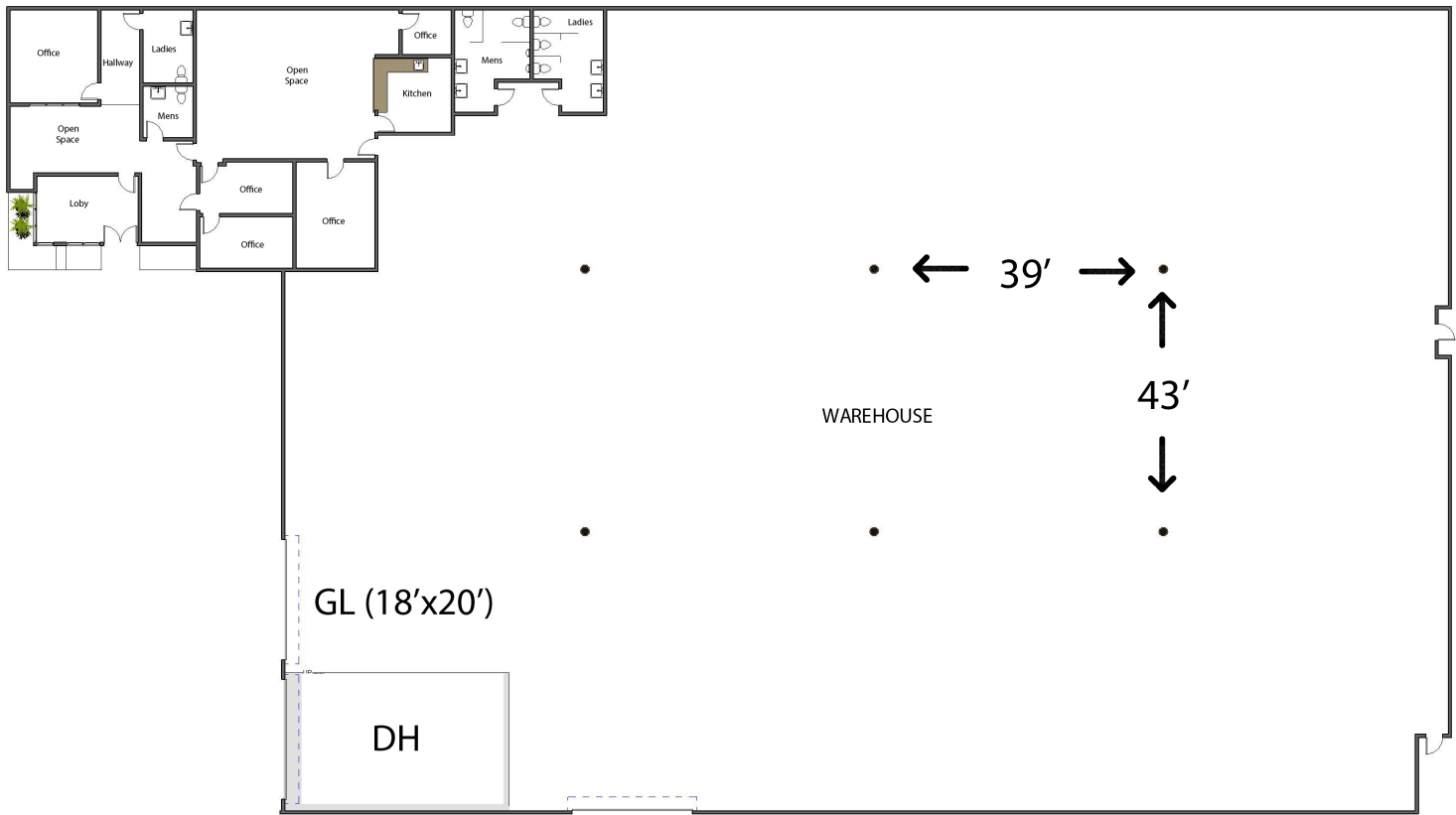
BRIAN CHASTAIN
949 724 5520
brian.chastain@colliers.com
License No. 01835064

COLLIERS INTERNATIONAL
3 Park Plaza, Suite 1200
Irvine, CA 92614
www.colliers.com

FOR LEASE

±22,585 Square Feet

1441 East Orangethorpe Avenue | Fullerton, CA



CHUCK WILSON
949 724 5502
chuck.wilson@colliers.com
License No. 00947221

BRIAN CHASTAIN
949 724 5520
brian.chastain@colliers.com
License No. 01835064

COLLIERS INTERNATIONAL
3 Park Plaza, Suite 1200
Irvine, CA 92614
www.colliers.com