

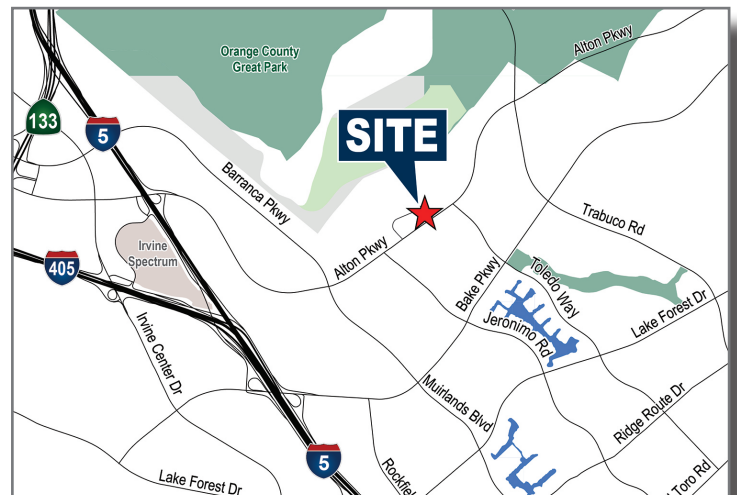
Alton Business Park - 3,272 SF

6 Morgan, Suite 116, Irvine Spectrum, CA



Features:

- High-Image, Multi-Tenant Business Park
- Prominent Exterior Signage
- Flexible Design for Expansion-Oriented Tenants
- Parking Ratio: 3.8:1,000
- Ground Level Loading
- Fully Sprinklered
- Immediate Occupancy
- Nets = \$0.28



SAM OLMSTEAD

Vice President
Lic. #01186543
949.263.5337
solmstead@voitco.com

Property Touring Guidelines >

Voit

REAL ESTATE SERVICES

www.VoitCo.com

2020 Main Street, Suite 100, Irvine, CA 92614 • 949.851.5100 • 949.261.9092 Fax

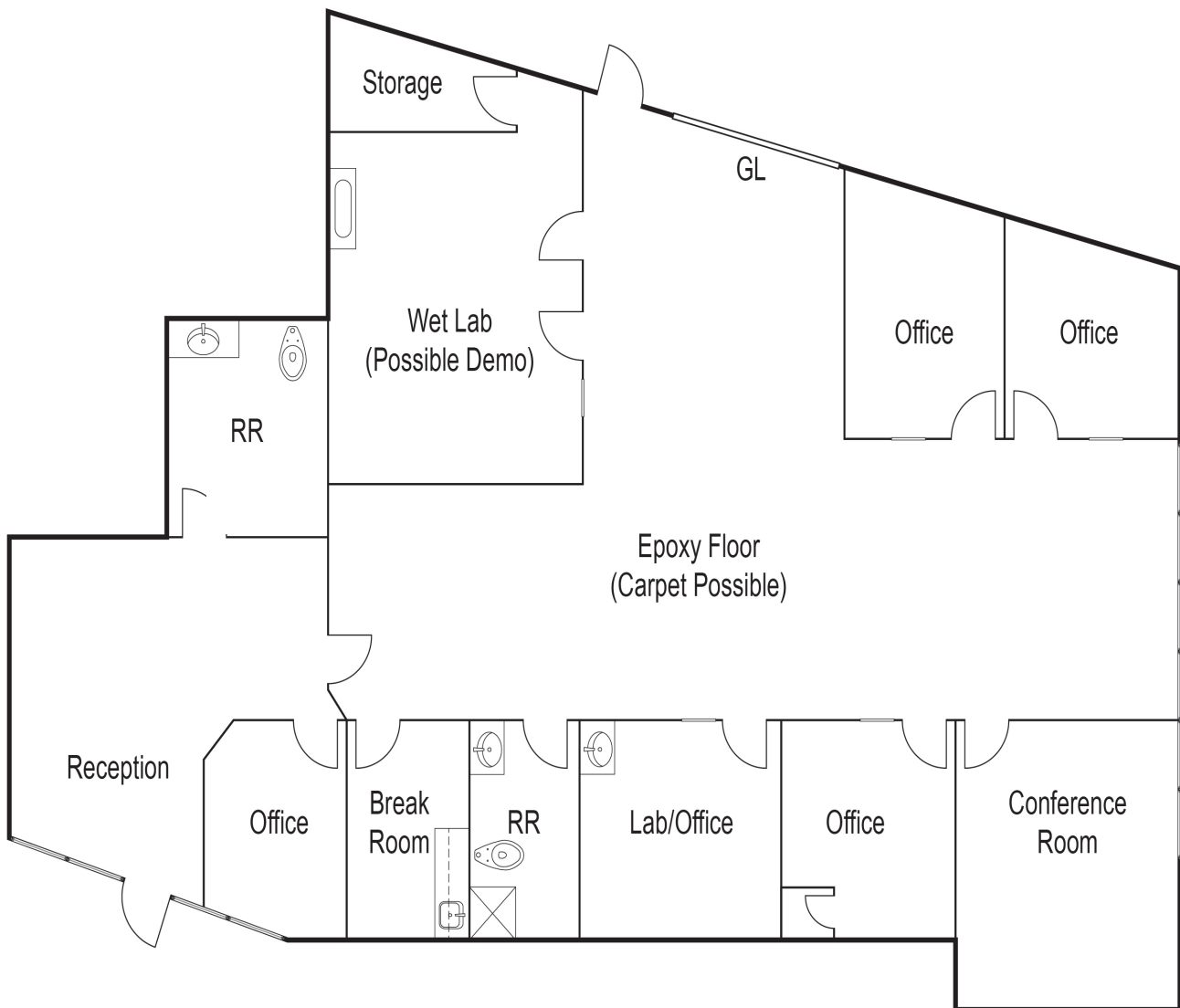
Licensed as a Real Estate Salesperson by the DRE. The information contained herein has been obtained from sources we deem reliable. While we have no reason to doubt its accuracy, we do not guarantee it. ©2019 Voit Real Estate Services, Inc. All Rights Reserved. License #01991785.

Alton Business Park - 3,272 SF

6 Morgan, Suite 116, Irvine Spectrum, CA

6 Morgan, Suite 116

3,272 Square Feet



Reception, Conference Room, 5 Offices, Break Room,
Wet Lab Space and 2 Restrooms

SAM OLMSTEAD

Vice President

Lic. #01186543

949.263.5337

solmstead@voitco.com

Voit

REAL ESTATE SERVICES

www.VoitCo.com

2020 Main Street, Suite 100, Irvine, CA 92614 • 949.851.5100 • 949.261.9092 Fax

Licensed as a Real Estate Salesperson by the DRE. The information contained herein has been obtained from sources we deem reliable.

While we have no reason to doubt its accuracy, we do not guarantee it. ©2019 Voit Real Estate Services, Inc. All Rights Reserved. License #01991785.