

AVAILABILITY

Hoover Business Park

7643-7725 Garden Grove Blvd. & 12600-12714 Hoover Street
Garden Grove, CA 92841

Voit

REAL ESTATE SERVICES

WAREHOUSE UNITS

Address	Total Size ¹	Office Size ¹	Asking Rate PSF	Monthly Rate	Comments
12708 Hoover Street	1,880	±300	\$1.20 Mod Gross	\$2,256.00	Reception, private office, restroom and large warehouse with ground level loading door.
12686-12688 Hoover Street	3,360	±870	\$1.20 Mod. Gross	\$4,032.00	Large open office area, 2 private offices, storage, 2 restrooms and large warehouse with 2 ground level loading doors.

OFFICE UNITS

Address	Total Size ¹	Office Size ¹	Asking Rate PSF	Monthly Rate	Comments
12682 Hoover	897	897	\$1.30 Mod. Gross	\$1,166.10	Large open office area, 3 private offices, storage and restroom.

RETAIL UNITS

Address	Total Size ¹	Office Size ¹	Asking Rate PSF	Monthly Rate	Comments
---------	-------------------------	--------------------------	--------------------	--------------	----------

No Availability

**There is an additional \$0.03 per square foot per month CAM Fee (Common Area Maintenance)*

Property Touring Guidelines >

¹Approximate total and office square footage

Hayden Socci, CCIM

Senior Vice President

714.935.2379

hsocci@voitco.com

Lic #01705038



2400 E. Katella Avenue, Suite 750, Anaheim, CA 92806 • 714.978.7880 • 714.276.0664 Fax • Lic #01991785 | www.voitco.com

The information contained herein has been obtained from sources we deem reliable. While we have no reason to doubt its accuracy, we do not guarantee it.
©2021 Voit Real Estate Services, Inc. All Rights Reserved. Real People. Real Solutions.® is a registered trademark of Voit Real Estate Services.

Real People. Real Solutions.®

Hoover Business Park

7643-7725 Garden Grove Boulevard &
12600-12714 Hoover Street, Garden Grove, CA 92841

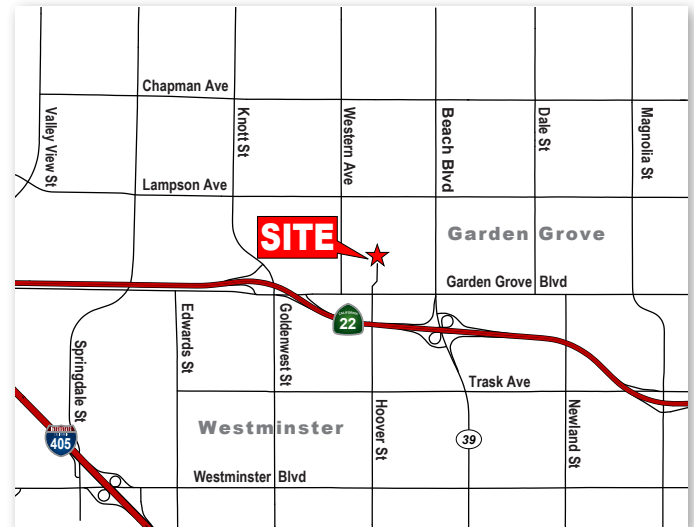
Voit

REAL ESTATE SERVICES



PROPERTY HIGHLIGHTS

- Units Range From 500 To 8,275 SF
- Twelve (12) Multi-Tenant Industrial/Office/Retail Buildings Totaling 189,526 SF
- High Image Business Park
- Over Standard Parking: 3.7:1 Parking Ratio
- Major Garden Grove Boulevard Frontage
- Ground Level Loading
- Excellent Freeway Access
- Close Proximity To The Garden Grove (22), San Diego (405) & Long Beach (605) Freeways



For More Information, Please Contact:

Hayden Socci, CCIM

Senior Vice President

Lic #01705038

714.935.2379

hsocci@voitco.com

2400 E. Katella Ave., Ste. 750, Anaheim, CA 92806 • 714.978.7880 • 714.276.0664 Fax • Lic #01991785 | www.voitco.com



The information contained herein has been obtained from sources we deem reliable. While we have no reason to doubt its accuracy, we do not guarantee it. ©2021 Voit Real Estate Services, Inc. All Rights Reserved. Real People. Real Solutions.® is a registered trademark of Voit Real Estate Services.

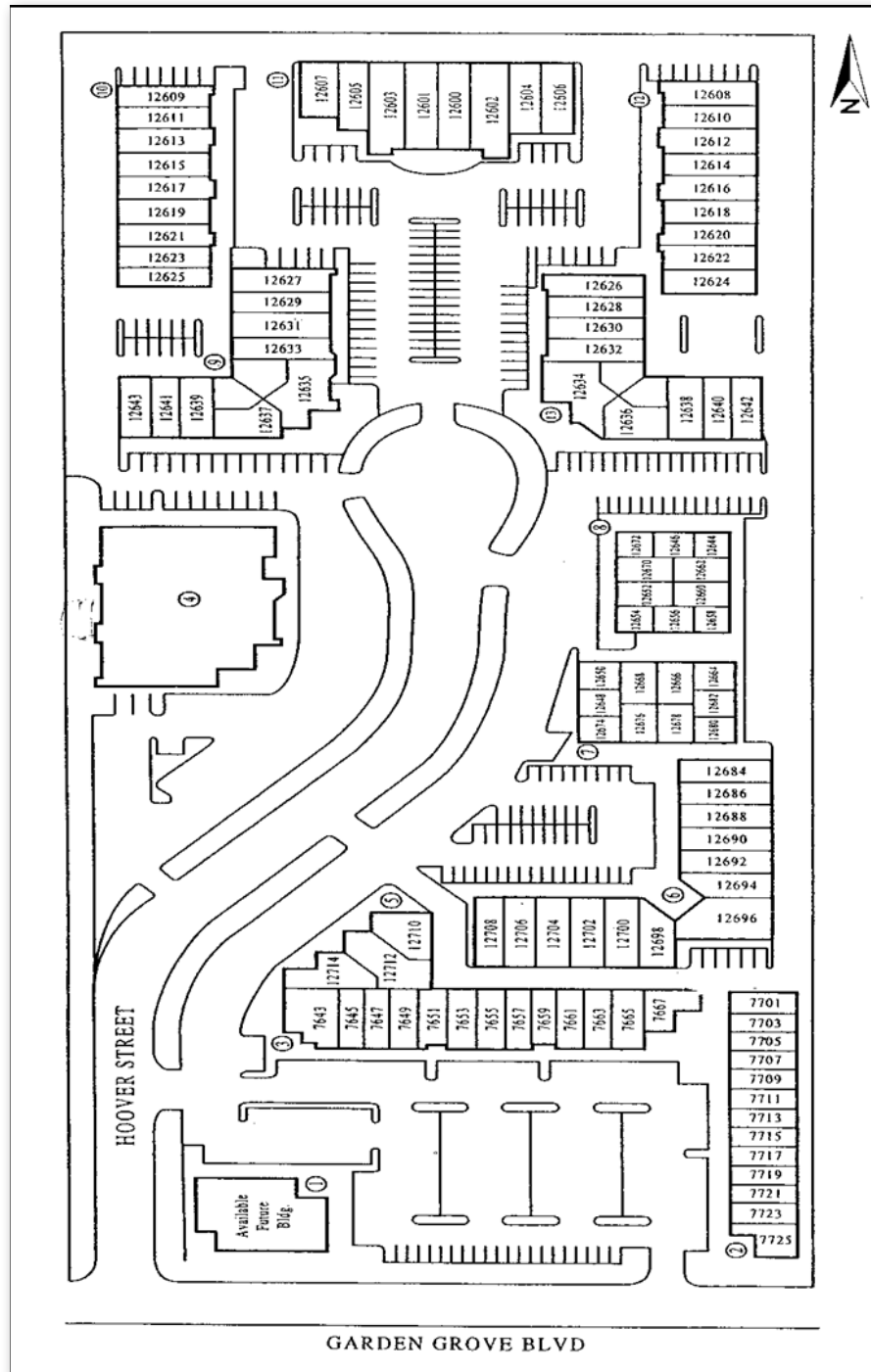
Real People. Real Solutions.®

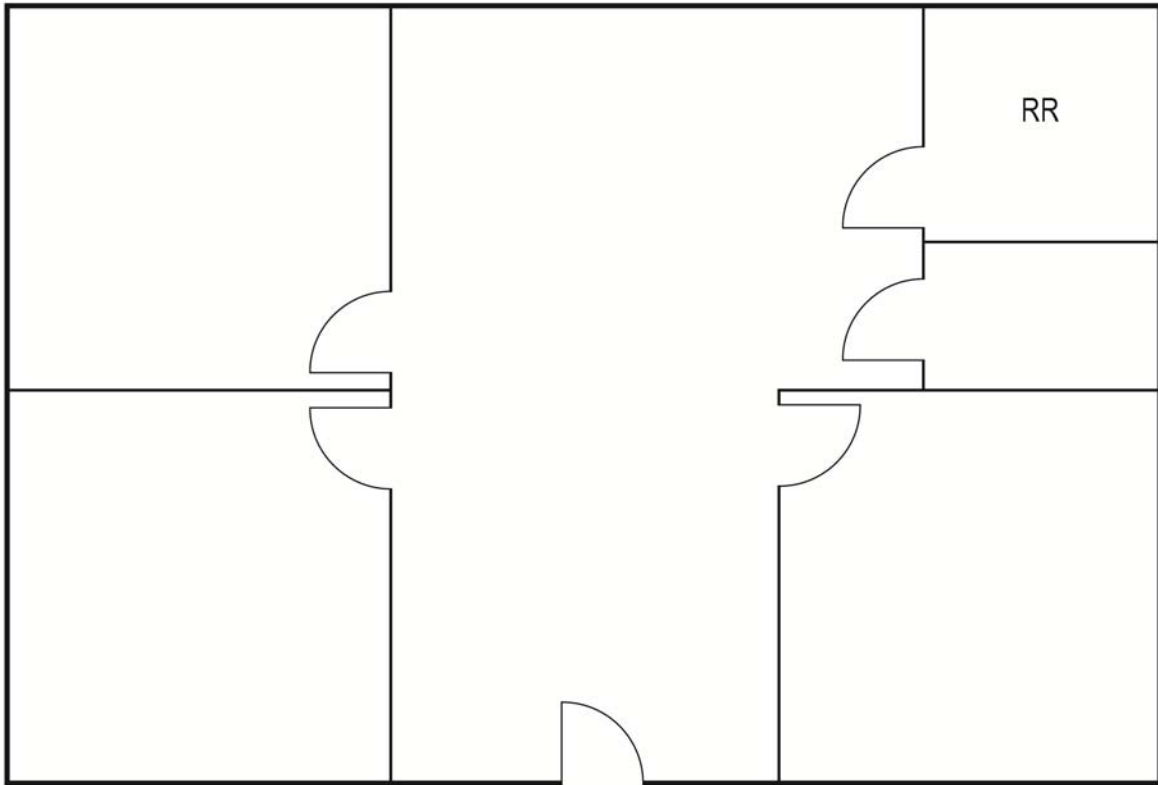
Hoover Business Park

7643-7725 Garden Grove Boulevard &
12600-12714 Hoover Street, Garden Grove, CA 92841

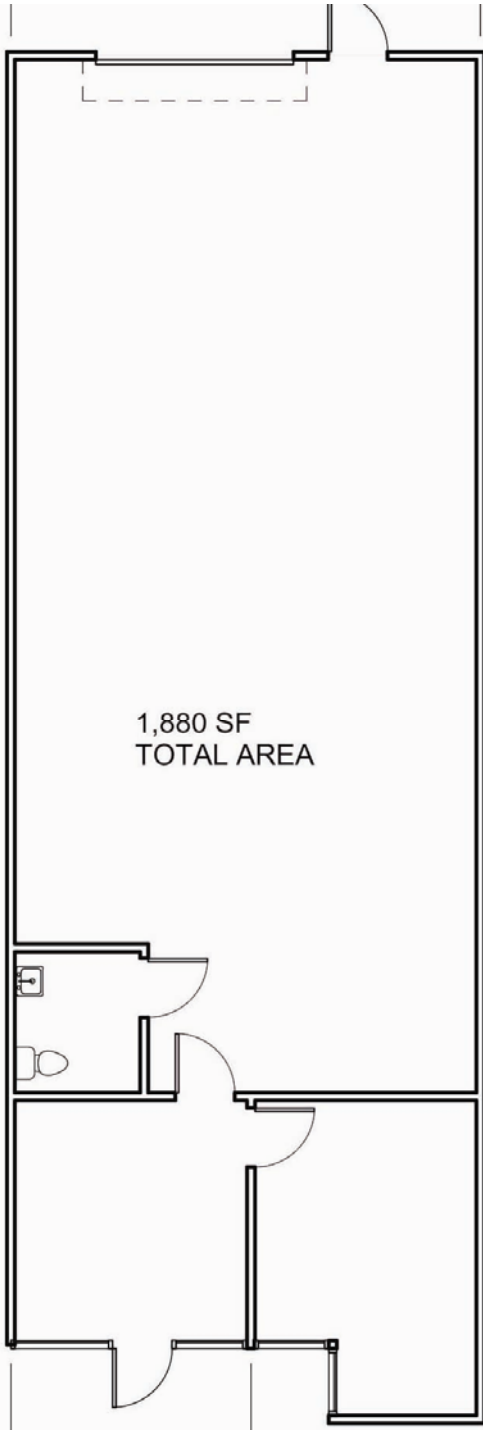
Voit

REAL ESTATE SERVICES

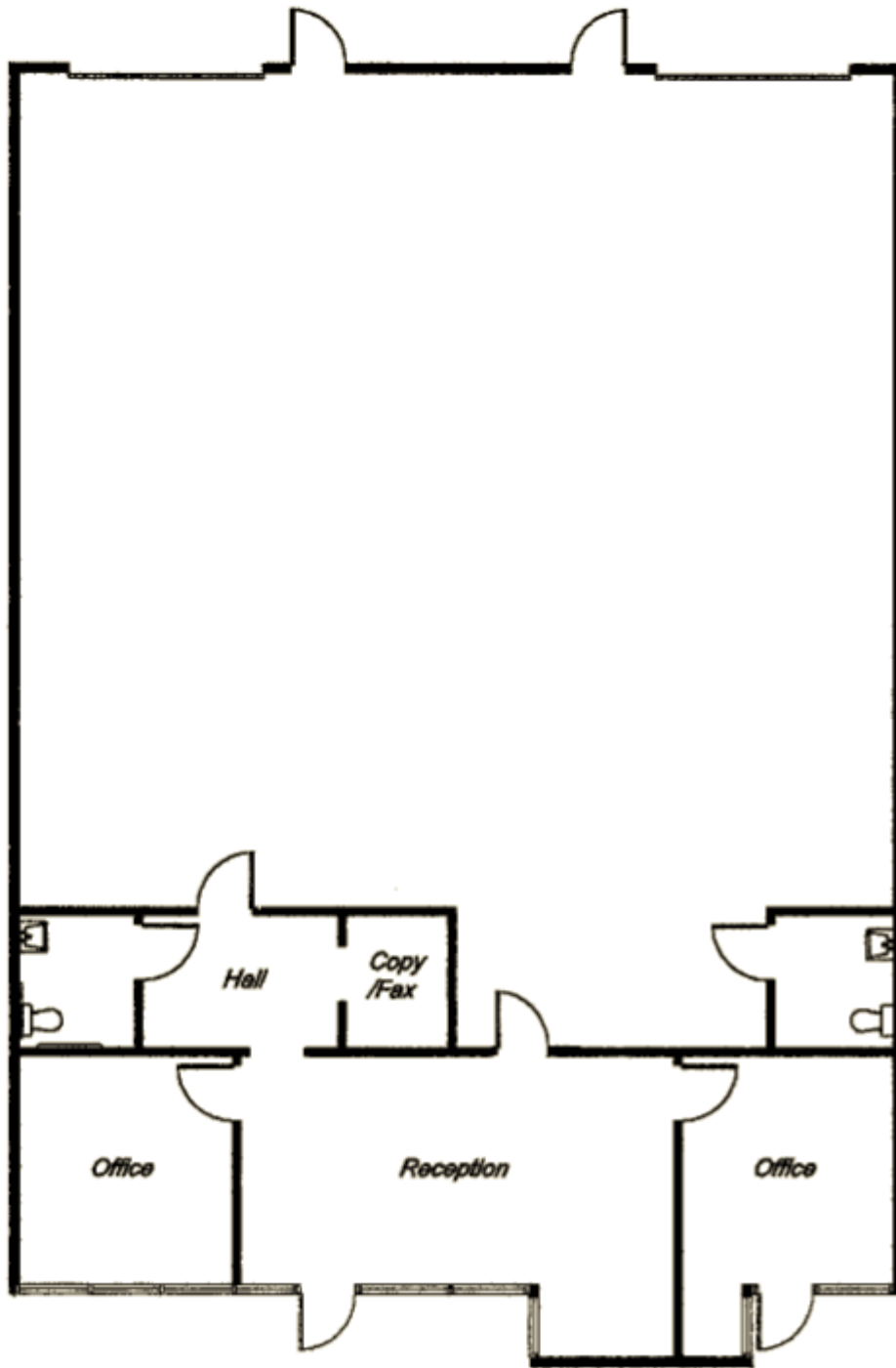




Hoover Business Park
12682 Hoover Street
897 Square Feet



Hoover Business Park
12708 Hoover Street
1,880 Square Feet



Hoover Business Park
12686-12688 Hoover Street
3,360 Square Feet