



AVAILABLE FOR LEASE
±2,440 SF of
R&D/Industrial Space



MASTER PLANNED
Part of the 1,000,000+ SF
Southpark Business Center



ACCESSIBLE
Close Access to the San Diego (405)
and Corona Del Mar/San Joaquin Hills
(73) Transportation Corridor

SOUTHPARK

BUSINESS CENTER

17654 Newhope Street, Suites E-F, Fountain Valley

CONTACTS

NICK SPATAFORE

First Vice President
Lic. 01353378
+1 949 725 8657
nick.spatafore@cbre.com

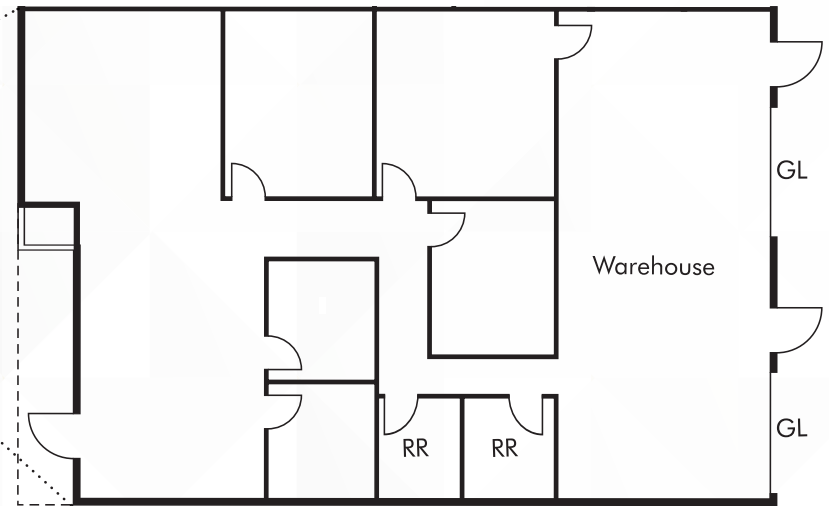
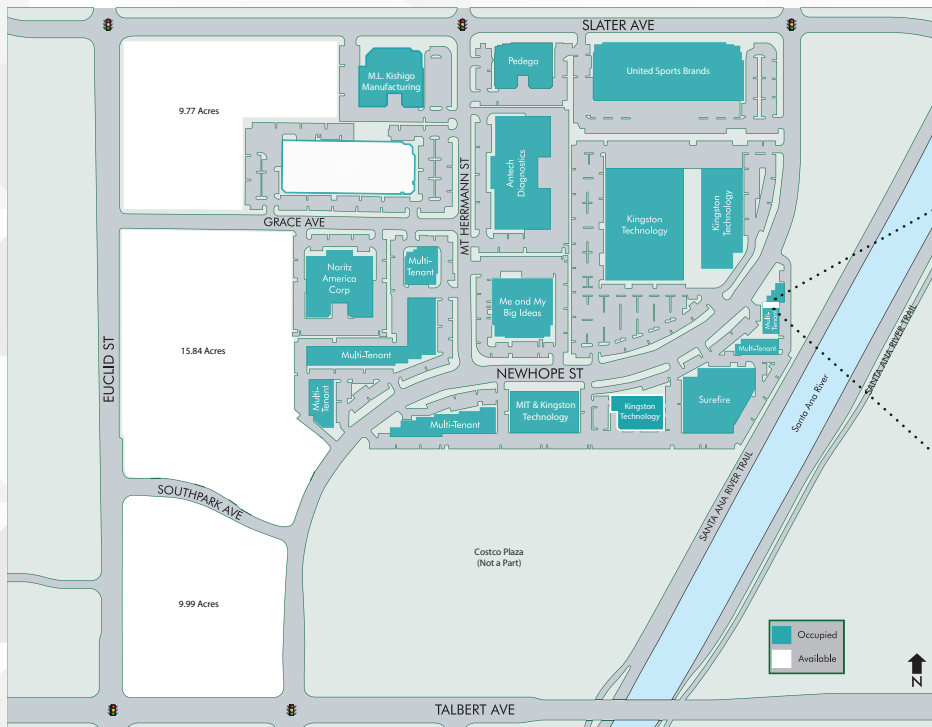
DAVE DESPER

Executive Vice President
Lic. 01094144
+1 949 725 8504
dave.desper@cbre.com

Suite Features

- + **+1,650 SF of Office**
- + **High Image Corporate Environment**
- + **Fully Sprinklered**
- + **Two (2) Ground Level Loading Doors**
- + **3:1,000 SF Parking**
- + **14' Minimum Clearance**

- + **Fiber Optic Services Available**
- + **Adjacent to Costco Retail Center, Kingston Technologies, Pedego and Surefire**
- + **Excellent Access to the San Diego (405) and Corona Del Mar/San Joaquin Hills (73) Transportation Corridor**
- + **Website - properties.cbre.us/southpark/**



© 2019 CBRE, Inc. All rights reserved. This information has been obtained from sources believed reliable, but has not been verified for accuracy or completeness. You should conduct a careful, independent investigation of the property and verify all information. Any reliance on this information is solely at your own risk. CBRE and the CBRE logo are service marks of CBRE, Inc. All other marks displayed on this document are the property of their respective owners. Photos herein are the property of their respective owners. Use of these images without the express written consent of the owner is prohibited.