

SADDLEBACK BUSINESS PARK

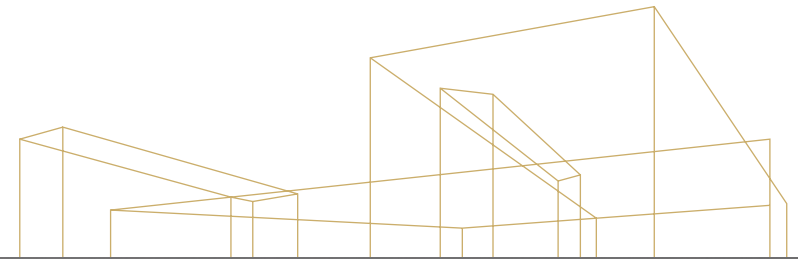
Industrial sublease opportunity, nestled in the
transportation corridor of South Orange County



30346 ESPERANZA, UNIT A | RANCHO SANTA MARGARITA, CA 92688 | FOR SUBLEASE

 **Kidder
Mathews**

SADDLEBACK BUSINESS PARK



Located along the cascading foothills of Orange County, this easy-to-use industrial space is available with a fair rate and flexible future terms. Grow your business today while choosing what's best for tomorrow.



For leasing
information
contact

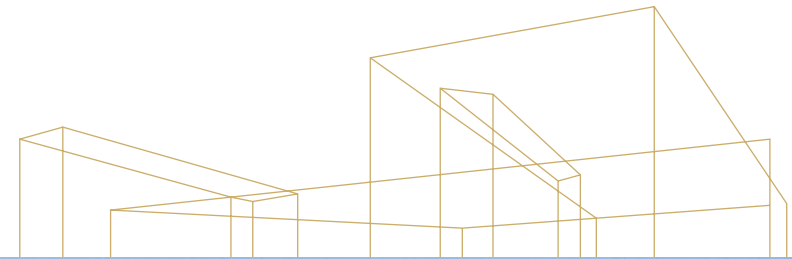
JAMES WYNNE
949.557.5060
jim.wynne@kidder.com
LIC N° 01242705

KIDDER.COM

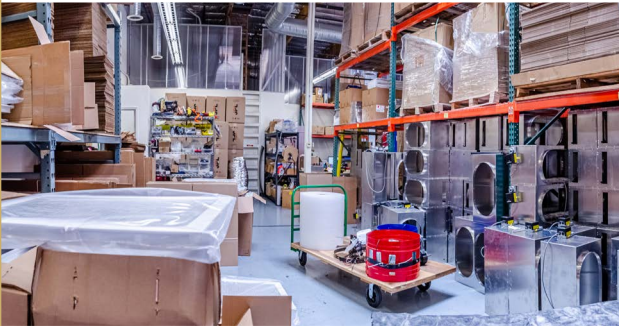
This information supplied herein is from sources we deem reliable. It is provided without any representation, warranty, or guarantee, expressed or implied as to its accuracy. Prospective Buyer or Tenant should conduct an independent investigation and verification of all matters deemed to be material, including, but not limited to, statements of income and expenses. Consult your attorney, accountant, or other professional advisor.



SADDLEBACK BUSINESS PARK



SADDLEBACK



For leasing
information
contact

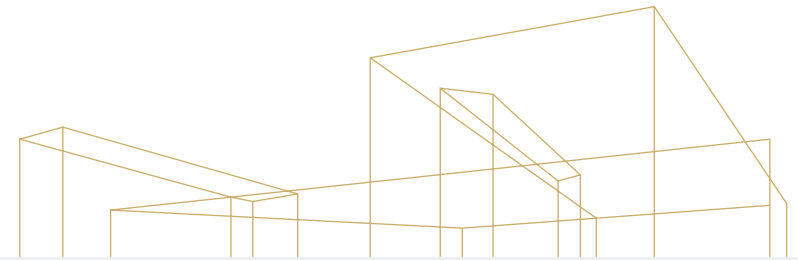
JAMES WYNNE
949.557.5060
jim.wynne@kidder.com
LIC N° 01242705

KIDDER.COM

This information supplied herein is from sources we deem reliable. It is provided without any representation, warranty, or guarantee, expressed or implied as to its accuracy. Prospective Buyer or Tenant should conduct an independent investigation and verification of all matters deemed to be material, including, but not limited to, statements of income and expenses. Consult your attorney, accountant, or other professional advisor.



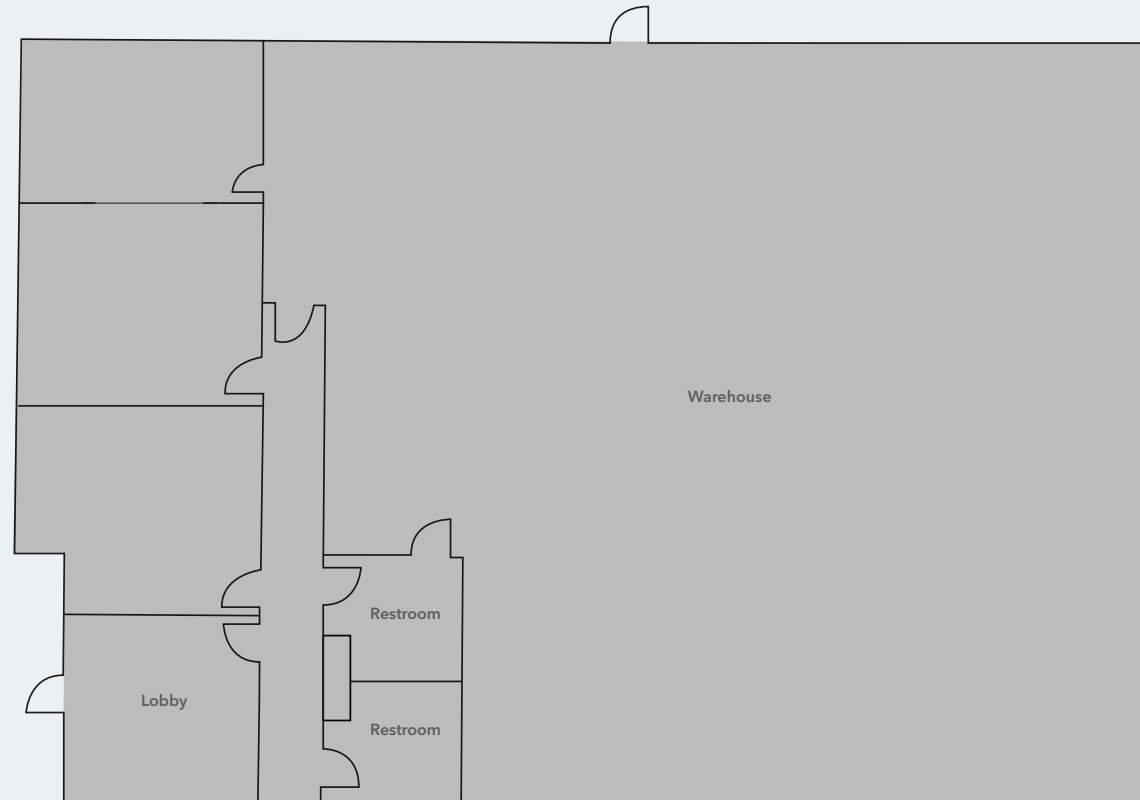
SADDLEBACK BUSINESS PARK



FIRST FLOOR UNIT A

3,804
SQUARE FEET

14
PARKING SPACES



For leasing
information
contact

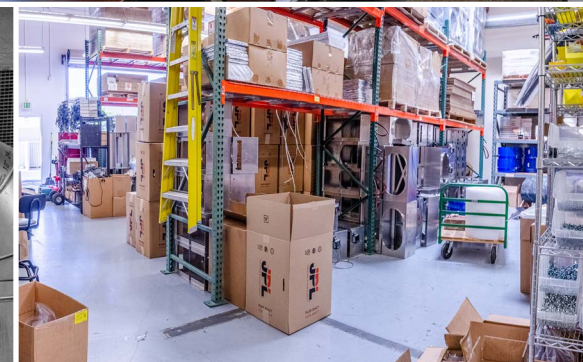
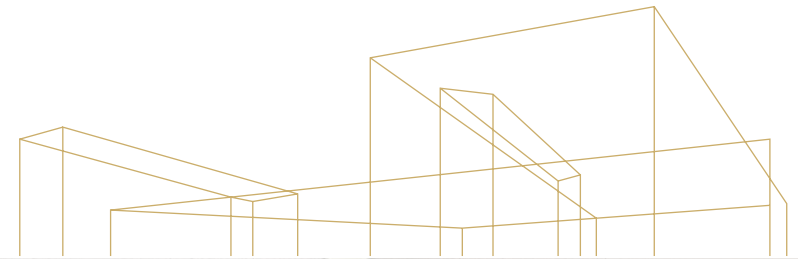
JAMES WYNNE
949.557.5060
jim.wynne@kidder.com
LIC N° 01242705

KIDDER.COM

This information supplied herein is from sources we deem reliable. It is provided without any representation, warranty, or guarantee, expressed or implied as to its accuracy. Prospective Buyer or Tenant should conduct an independent investigation and verification of all matters deemed to be material, including, but not limited to, statements of income and expenses. Consult your attorney, accountant, or other professional advisor.



SADDLEBACK BUSINESS PARK



For leasing
information
contact

JAMES WYNNE
949.557.5060
jim.wynne@kidder.com
LIC N° 01242705

KIDDER.COM

This information supplied herein is from sources we deem reliable. It is provided without any representation, warranty, or guarantee, expressed or implied as to its accuracy. Prospective Buyer or Tenant should conduct an independent investigation and verification of all matters deemed to be material, including, but not limited to, statements of income and expenses. Consult your attorney, accountant, or other professional advisor.



SADDLEBACK BUSINESS PARK



For leasing
information
contact

JAMES WYNNE
949.557.5060
jim.wynne@kidder.com
LIC N° 01242705

KIDDER.COM

This information supplied herein is from sources we deem reliable. It is provided without any representation, warranty, or guarantee, expressed or implied as to its accuracy. Prospective Buyer or Tenant should conduct an independent investigation and verification of all matters deemed to be material, including, but not limited to, statements of income and expenses. Consult your attorney, accountant, or other professional advisor.





For leasing information contact

JAMES WYNNE
949.557.5060
jim.wynne@kidder.com
LIC N° 01242705

Scan for 360 Virtual
Property Tour:



KIDDER.COM

This information supplied herein is from sources we deem reliable. It is provided without any representation, warranty, or guarantee, expressed or implied as to its accuracy. Prospective Buyer or Tenant should conduct an independent investigation and verification of all matters deemed to be material, including, but not limited to, statements of income and expenses. Consult your attorney, accountant, or other professional advisor.

