



FOR LEASE

±2,525 SF Creative Office Building

9211 Research Drive, Irvine | CA

9211 Research in Irvine is a 2,525 square foot, single story office condominium with private offices and high end finishes. The Property's premiere location is only one mile from Los Olivos Marketplace, and two miles from Irvine Spectrum Center, a world-class shopping destination offering more than 130 retail, restaurant and entertainment venues.

FEATURES

- ±2,525 SF Building
- Creative Office Improvements
- Polished Concrete Floors
- Exposed Ceiling & Ducting
- 16' Clear Height
- Major Street Frontage
- Direct Access to 5, 405, 73 Fwys
- Koll Center III

Contact us:

Joe Winkelmann

Executive Vice President

+1 949 724 5704

joe.winkelmann@colliers.com

Lic. No. 01259378

Tony Lochhead

Associate

+1 949 724 5702

tony.lochhead@colliers.com

Lic. No. 02000345



Colliers International

3 Park Plaza | Suite 1200

Irvine, CA 92614

P: +1 949 724 5500

Lic. No. 01908231

This document has been prepared by Colliers International for advertising and general information only. Colliers International makes no guarantees, representations or warranties of any kind, expressed or implied, regarding the information including, but not limited to, warranties of content, accuracy and reliability. Any interested party should undertake their own inquiries as to the accuracy of the information. Colliers International excludes unequivocally all inferred or implied terms, conditions and warranties arising out of this document and excludes all liability for loss and damages arising there from. This publication is the copyrighted property of Colliers International and/or its licensor(s). ©2018. All rights reserved.



Contact us:

Joe Winkelmann

Executive Vice President

+1 949 724 5704

joe.winkelmann@colliers.com

Lic. No. 01259378

Tony Lochhead

Associate

+1 949 724 5702

tony.lochhead@colliers.com

Lic. No. 02000345



Accelerating success.



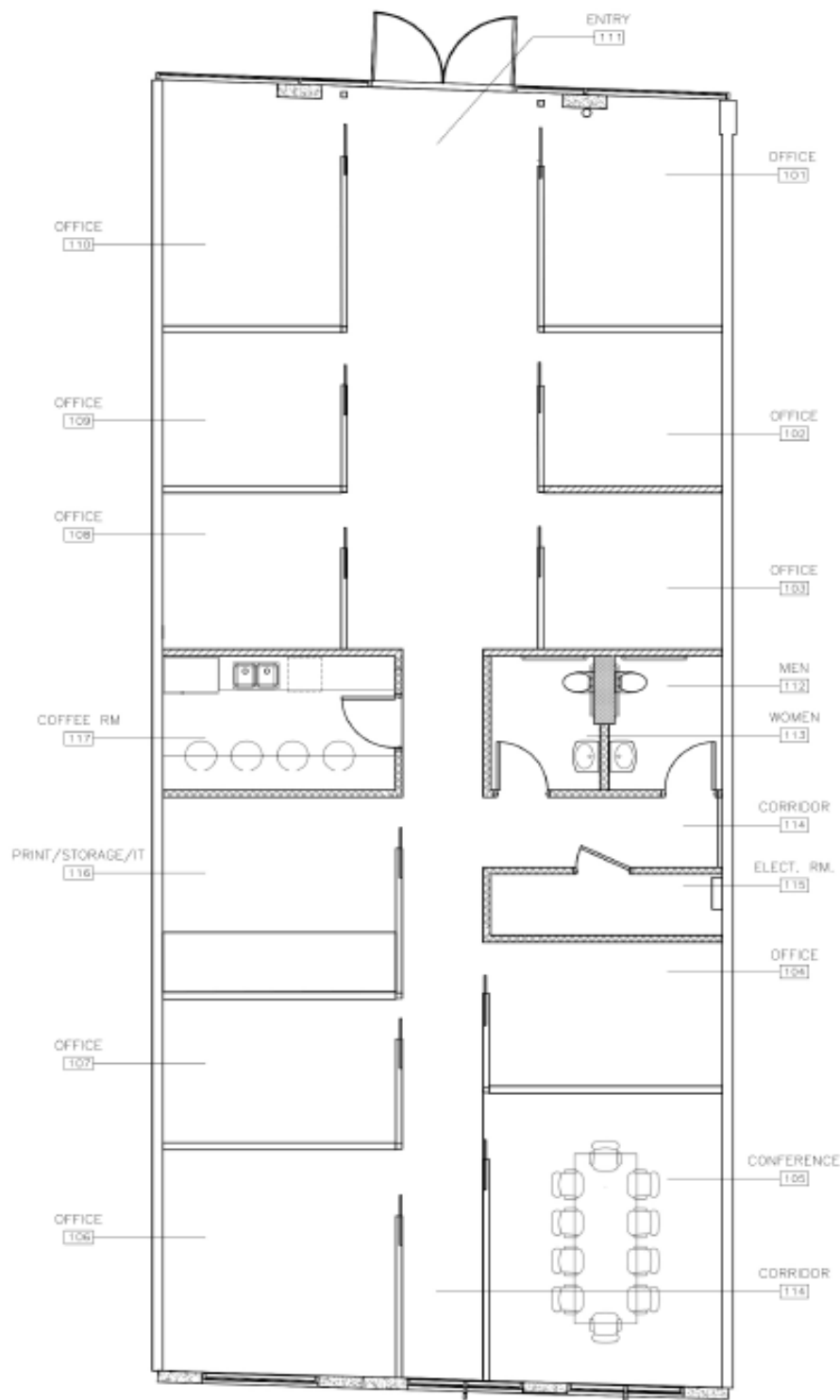
Contact us:

Joe Winkelmann
Executive Vice President
+1 949 724 5704
joe.winkelmann@colliers.com
Lic. No. 01259378

Tony Lochhead
Associate
+1 949 724 5702
tony.lochhead@colliers.com
Lic. No. 02000345



Accelerating success.



Contact us:

Joe Winkelmann

Executive Vice President

+1 949 724 5704

joe.winkelmann@colliers.com

Lic. No. 01259378

Tony Lochhead

Associate

+1 949 724 5702

tony.lochhead@colliers.com

Lic. No. 02000345



Accelerating success.