

FOR LEASE

**±14,773 SF**  
5300 E. LA PALMA AVENUE  
ANAHEIM, CA



## BUILDING HIGHLIGHTS

- + Total Size: ±14,773 SF
- + Part of a Larger ±82,385 SF Building
- + Minimum Clear Height: 16'
- + Three (3) Dock High Doors
- + One (1) Grade Level Door
- + Fully Fire Sprinklered
- + Close Proximity to 55 & 91 Freeways



## CONTACT US

### SEAN WARD

+1 714 371 9222  
sean.ward@cbre.com  
Lic. 01415499

### BEN SEYBOLD

+1 714 371 9233  
ben.seybold@cbre.com  
Lic. 01081310

### KEITH GREER

+1 714 371 9209  
keith.greer@cbre.com  
Lic. 01899022

### KENNY PATRICIA

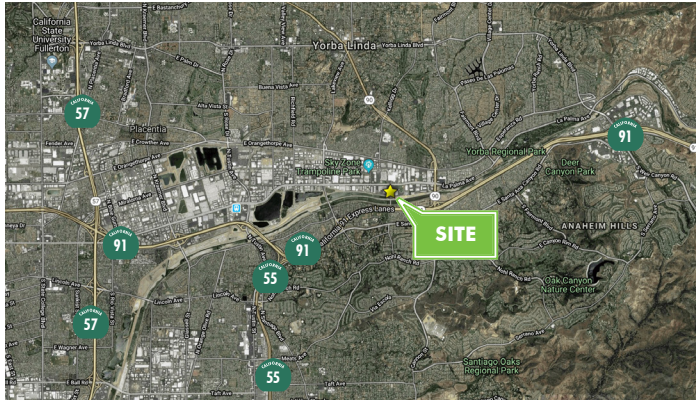
+1 714 371 9221  
kenneth.patricia@cbre.com  
Lic. 01999969

[www.cbre.com](http://www.cbre.com)

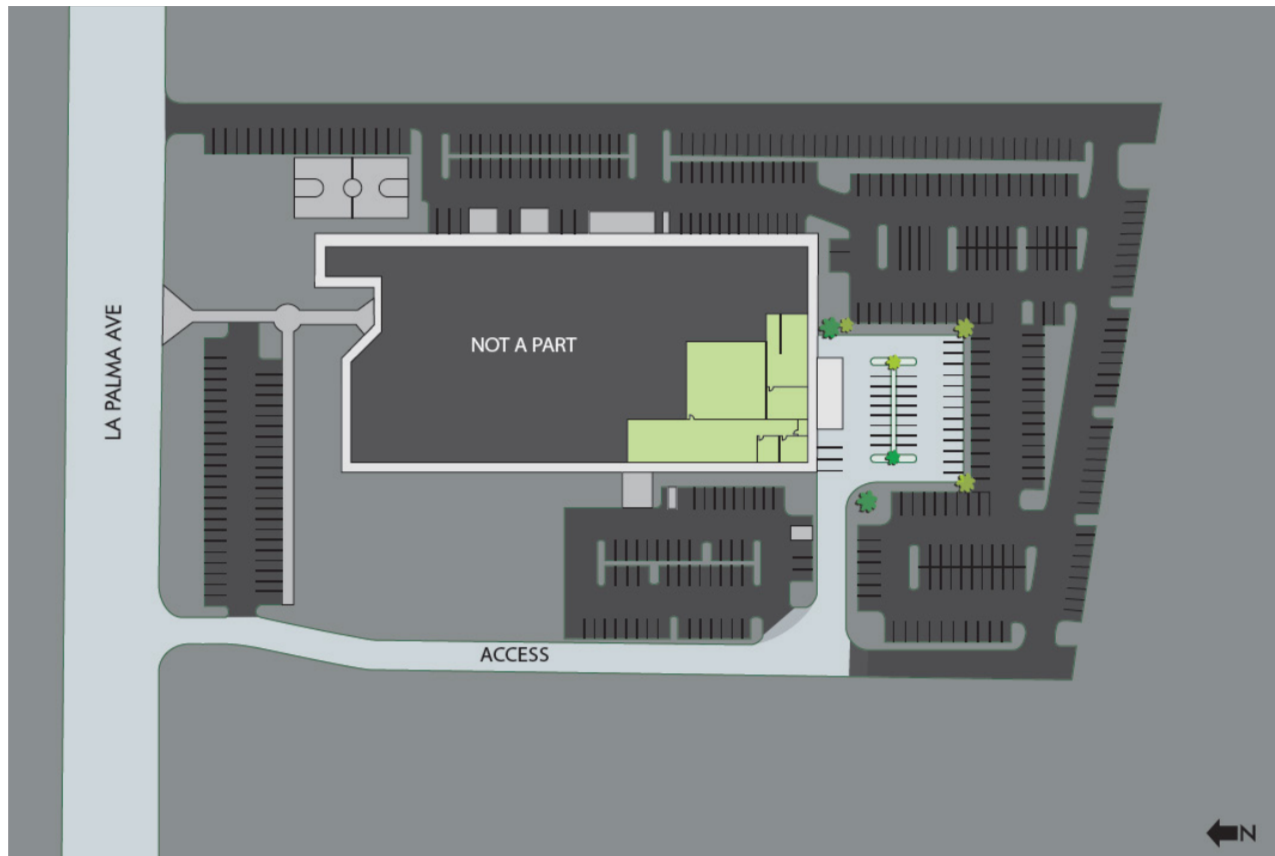
**CBRE**

FOR LEASE  
**±14,773**

**5300 E.  
LA PALMA AVENUE**  
Anaheim, CA



## SITE PLAN



©2020 CBRE, Inc. This information has been obtained from sources believed reliable. We have not verified it and make no guarantee, warranty or representation about it. Any projections, opinions, assumptions or estimates used are for example only and do not represent the current or future performance of the property. You and your advisors should conduct a careful, independent investigation of the property to determine to your satisfaction the suitability of the property for your needs. CBRE and the CBRE logo are service marks of CBRE, Inc. and/or its affiliated or related companies in the United States and other countries. All other marks displayed on this document are the property of their respective owners.

[www.cbre.com](http://www.cbre.com)

**CBRE**