

FOR LEASE



11651 Markon Drive, Garden Grove, CA 92841

FENCED YARD

FEATURES:

- ±12,038 Total Square Feet
- Freestanding Building
- ±3,000 Square Feet of Office
- **FENCED YARD**
- Three (3) Ground Level Loading Doors
- 18' Ft. Warehouse Clear Height
- 2:1 Parking Ratio (2 spaces per 1,000 Sq. Ft.)
- 400 Amps (verify)
- Skylights
- Bonus Office Mezzanine ±1,507 Sq. Ft.
- Close Proximity to the Garden Grove (22), Santa Ana (5), San Diego (405) and San Gabriel (605) Freeways



Hayden Socci, CCIM
Senior Vice President
714.935.2379
Lic. #01705038

Tom Terry
Associate
714.935.2313
Lic. #02069424

Voit
REAL ESTATE SERVICES

2400 E. Katella Ave., Ste. 750, Anaheim, CA 92806
714.978.7880 • 714.276.0664 Fax www.VoitCo.com

Licensed as Real Estate Salespersons by the DRE. The information contained herein has been obtained from sources we deem reliable. While we have no reason to doubt its accuracy, we do not guarantee it. ©2019 Voit Real Estate Services, Inc. All Rights Reserved. Lic. #01991785

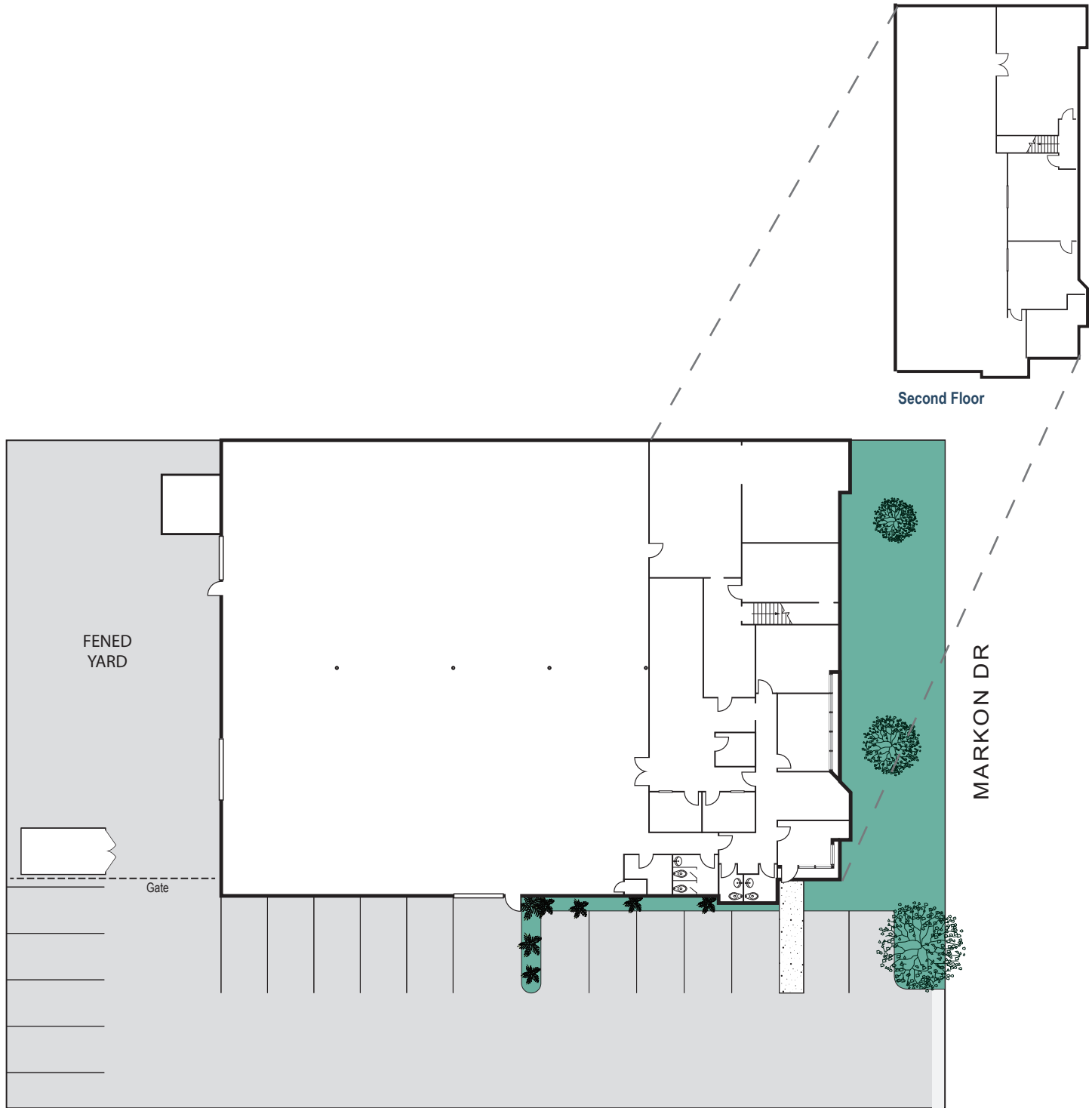
FOR LEASE

±12,038 Square Feet

11651 Markon Drive, Garden Grove, CA 92841

Voit

REAL ESTATE SERVICES



* Site Plan may not be to scale.

Hayden Socci, CCIM
Senior Vice President
714.935.2379
Lic. #01705038

Tom Terry
Associate
714.935.2313
Lic. #02069424

Voit
REAL ESTATE SERVICES

2400 E. Katella Ave., Ste. 750, Anaheim, CA 92806
714.978.7880 • 714.276.0664 Fax www.VoitCo.com

Licensed as Real Estate Salespersons by the DRE. The information contained herein has been obtained from sources we deem reliable. While we have no reason to doubt its accuracy, we do not guarantee it. ©2019 Voit Real Estate Services, Inc. All Rights Reserved. Lic. #01991785