

SUB-LEASE

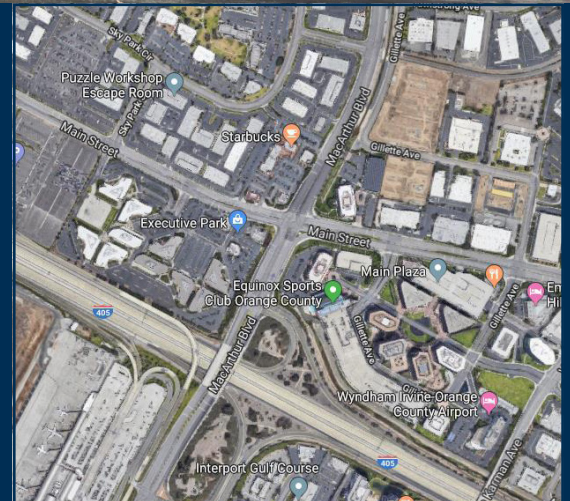
AVAILABLE | 2,664 SF

34 EXECUTIVE PARK, SUITE 270, IRVINE, CALIFORNIA 92614



## Property Features

- Immediate Occupancy
- 5 Offices, Conference Room, Kitchen, Storage and Open Support Area
- Fully Furnished Plug & Play
- Lease Expiration Date June 30, 2021
- Longer Term Available
- Free Surface Parking
- Please Call To Show



**DOUG KILLIAN**  
Senior Vice President | Partner  
949.263.5322  
dkillian@voitco.com  
Lic. #00887784

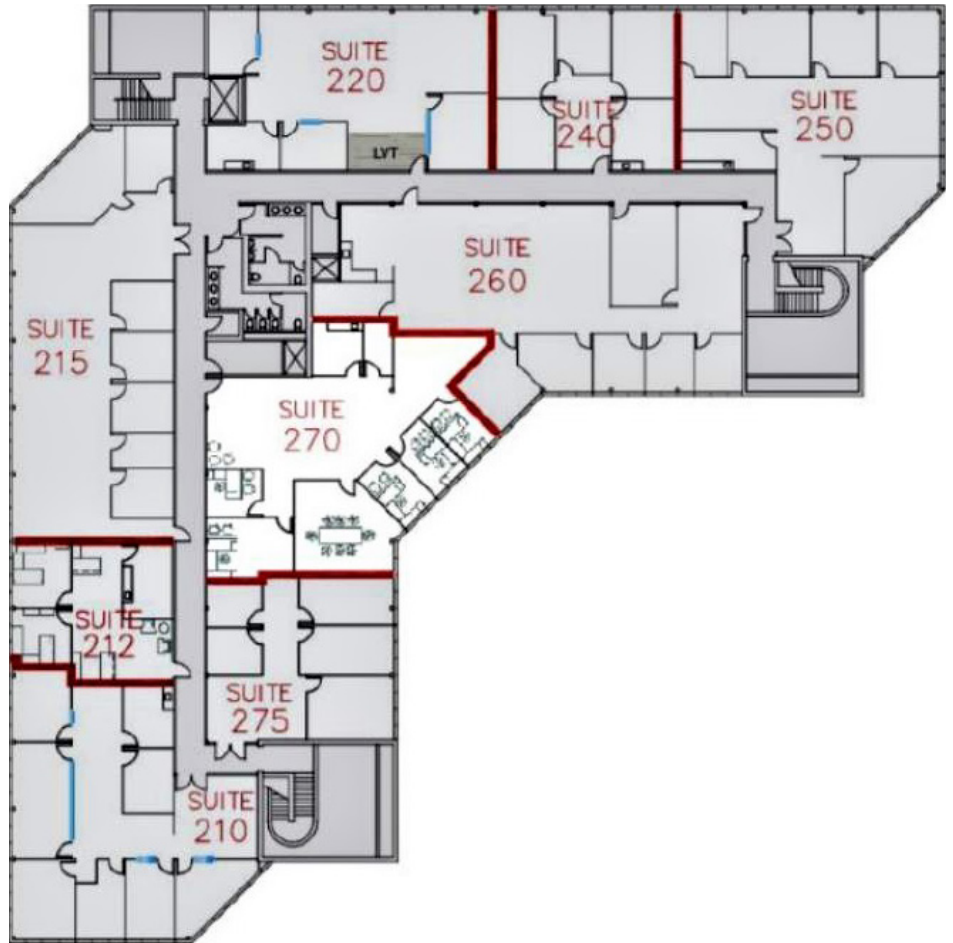
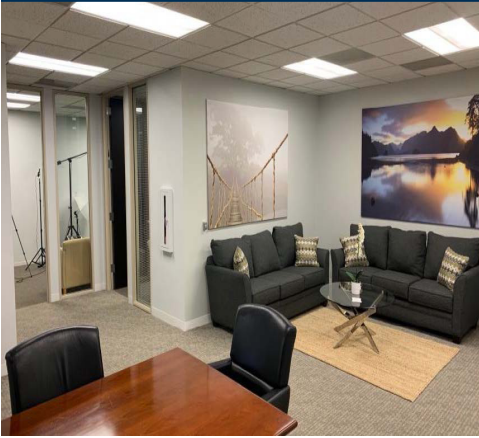
**Voit**  
REAL ESTATE SERVICES



**SUB-LEASE**

**AVAILABLE | 2,664 SF**

34 EXECUTIVE PARK, SUITE 270, IRVINE, CALIFORNIA 92614



**DOUG KILLIAN**  
Senior Vice President | Partner  
949.263.5322  
dkillian@voitco.com  
Lic. #00887784

***Voit***

REAL ESTATE SERVICES