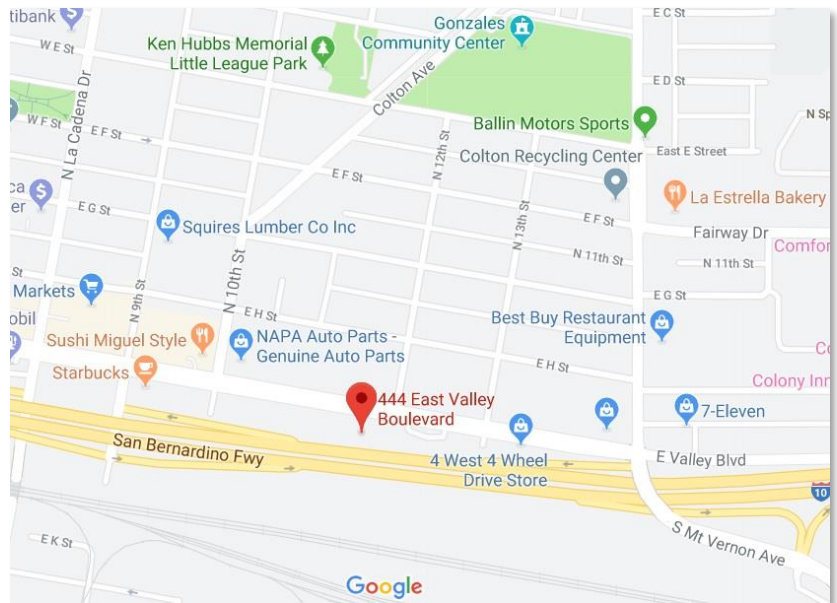


FOR LEASE**2,600 to 17,192 SF****444 E Valley Blvd, Colton Ca,****Property Information:**

- 2,600 SF to 17,192 SF
- 15' Warehouse Clearance
- 5 Grade Level Loading Doors
- Drive through Building
- 10 Freeway Frontage
- Street Frontage / Signage
- CTU Construction
- Immediate 10 Freeway Access
- Call to Tour
- Available Immediately
- See attached Site Plan
- Competitively Priced .75G PSF

***For additional information, please contact:*****NEIL MULLARKY** p: 949.242.1709

neil.mullarky@daumcommercial.com

DRE #01361275

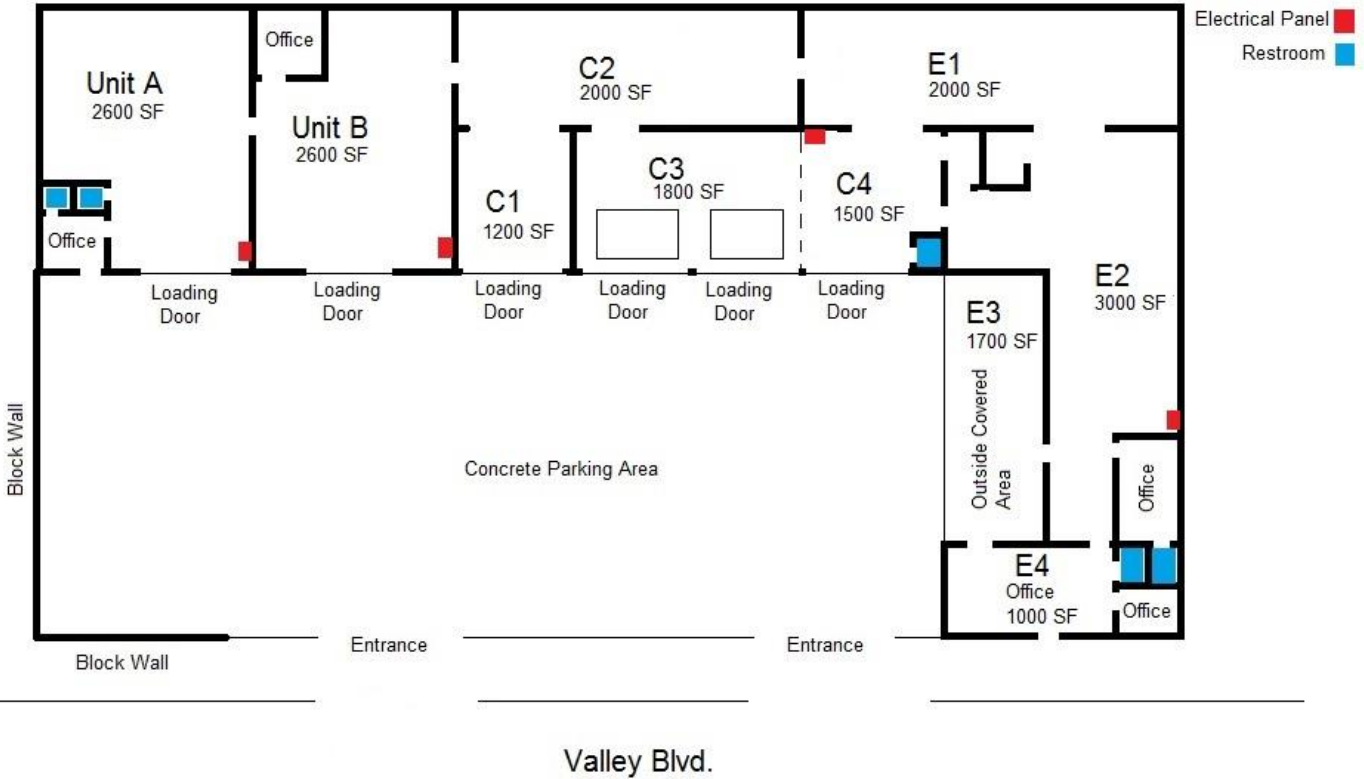
www.daumcommercial.com

DAUM**COMMERCIAL REAL ESTATE SERVICES****ONCOR INTERNATIONAL**

Although all information is furnished regarding sale, rental or financing is from sources deemed reliable, such information has not been verified and no express representation is made nor is any to be implied as to the accuracy thereof, and it is submitted subject to errors, omissions, changes of price, rental or other conditions, prior sale, lease or financing, or withdrawal without notice.

Site Plan

E Valley Blvd. Site Plan *All SF are approximate



*All SF are approximate

For additional information, please contact:

NEIL MULLARKY

neil.mullarky@daumcommercial.com

DRE #01361275

www.daumcommercial.com

p: 949.724.1900 x-2509 | f: 949.474.1771

www.daumcommercial.com

DAUM
COMMERCIAL REAL ESTATE SERVICES
ONCOR INTERNATIONAL

Although all information is furnished regarding sale, rental or financing is from sources deemed reliable, such information has not been verified and no express representation is made nor is any to be implied as to the accuracy thereof, and it is submitted subject to errors, omissions, changes of price, rental or other conditions, prior sale, lease or financing, or withdrawal without notice.