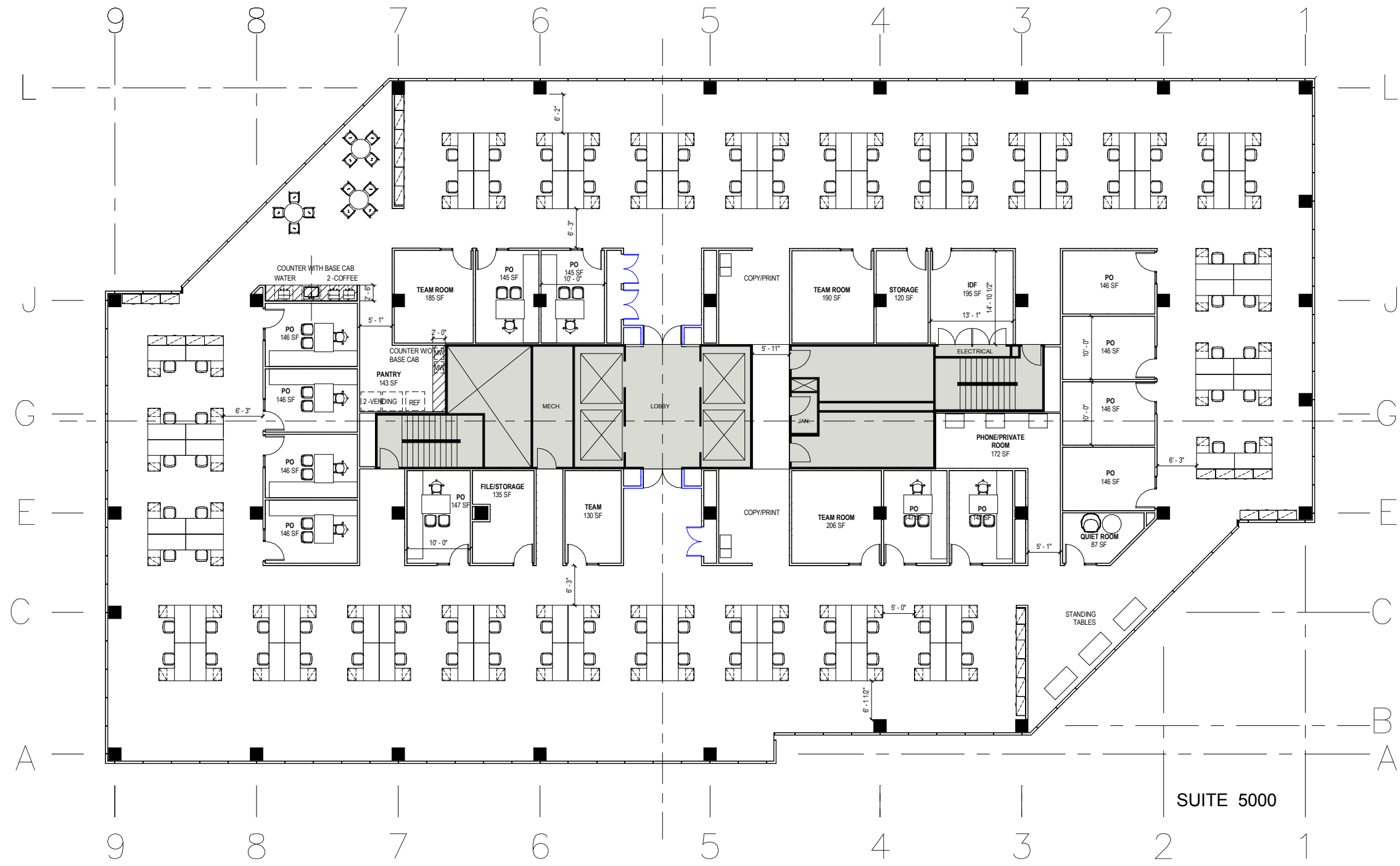


**PROGRAM SUMMARY - 1ST FLOOR TEST FIT**

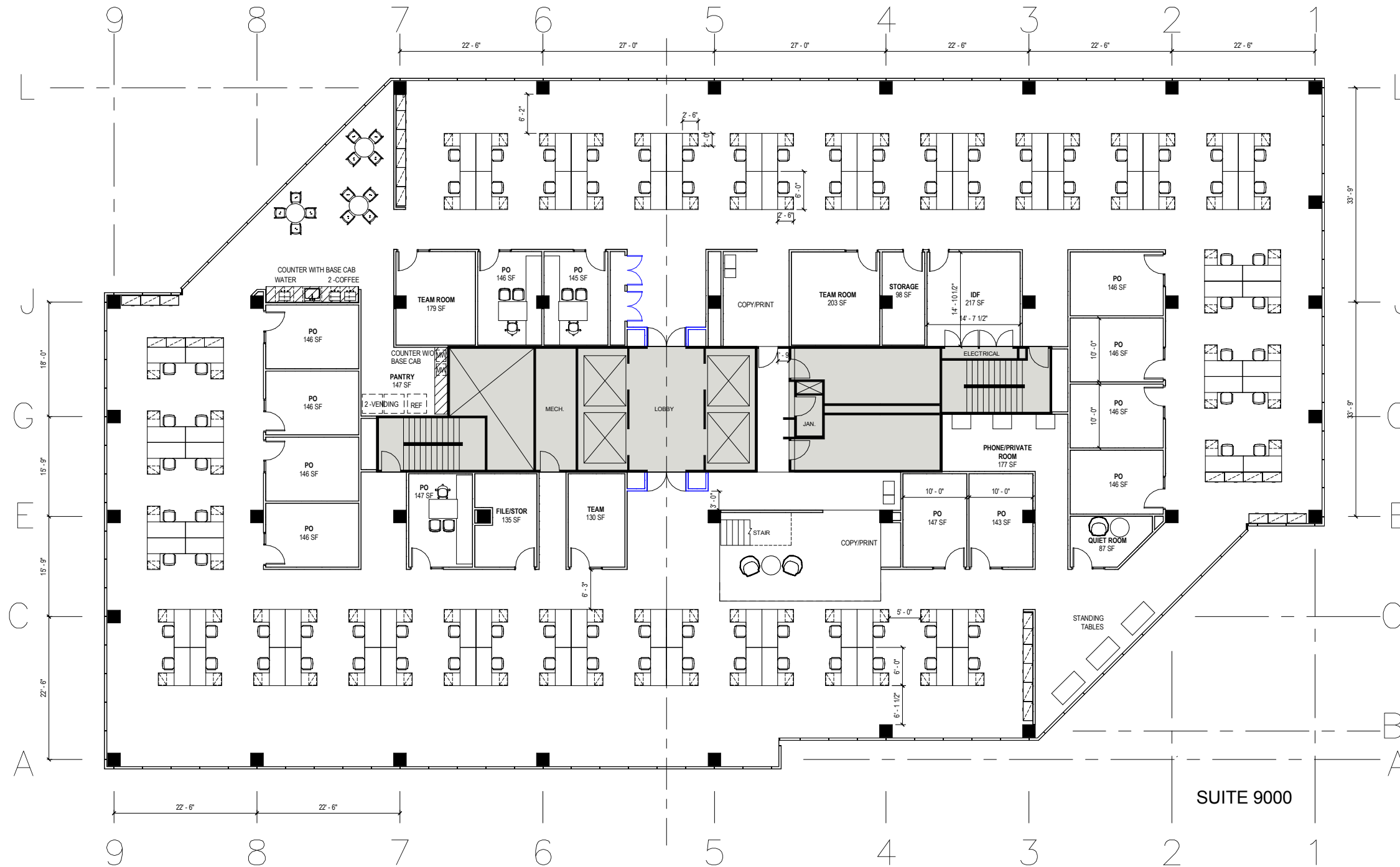
- MULTI-PURPOSE ROOM- 1
- PANTRY- 1
- GAME AREA- 1
- STORAGE- 1
- NEW RESTROOMS- 2



**PROGRAM SUMMARY - 5TH FLOOR ( TYPICAL FOR FLOORS 3-8) TEST FIT**

- PRIVATE OFFICE - 13
- WORKSTATION - 92
- QUIET ROOM- 1
- TEAM ROOM- 4
- IDF-1
- SINK/COFFEE- 1
- PANTRY- 1
- FILE/STORAGE- 2
- COPY/PRINT - 2
- PHONE ROOM- 1

**GENERAL NOTE:**  
 1- BLUE ITEMS ARE ADD ALTERNATE, DOOR ON HOLD  
 OPEN AND CLOSET DOORS

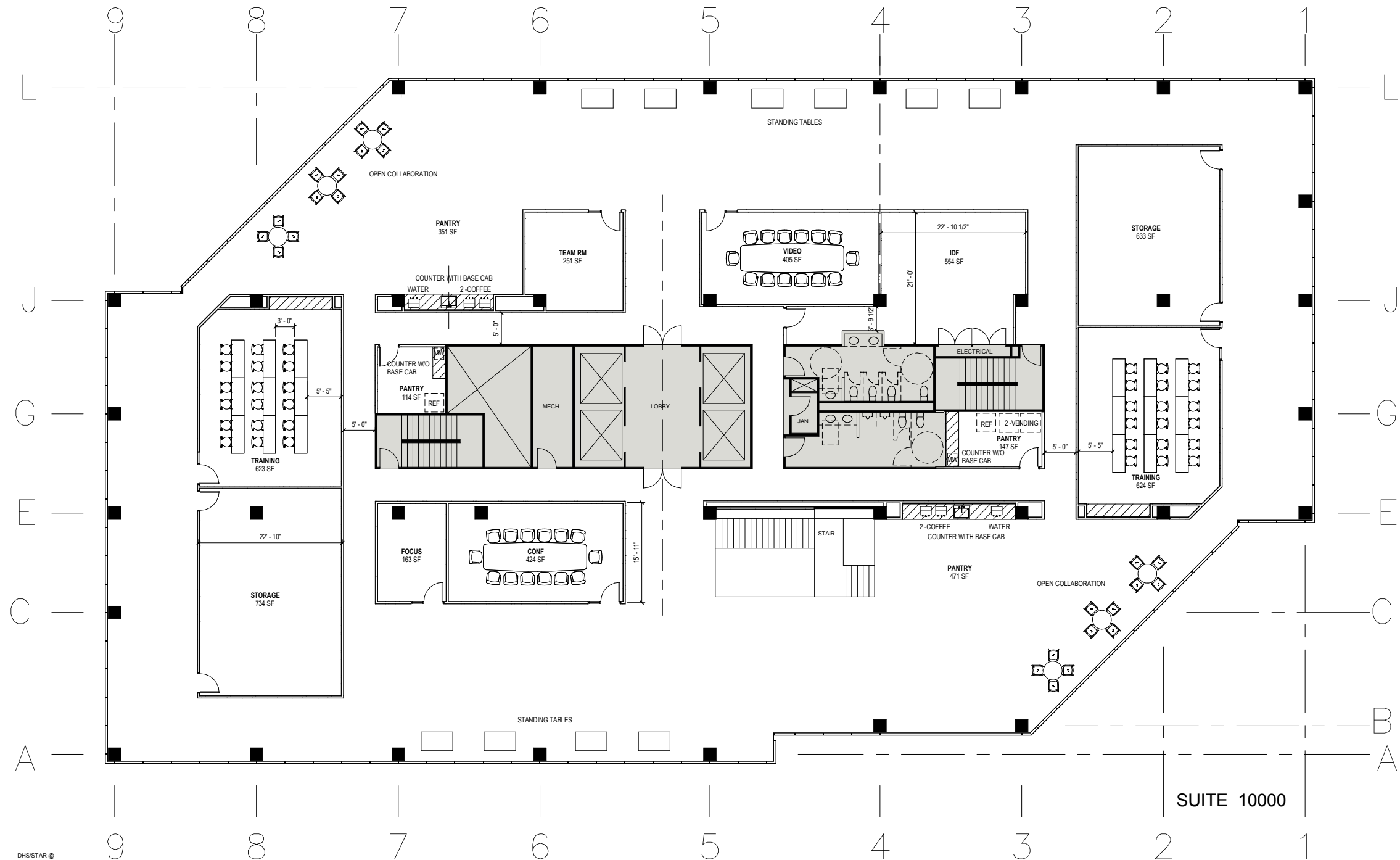


**PROGRAM SUMMARY - 9TH FLOOR TEST FIT**

- PRIVATE OFFICE - 13
- WORKSTATION - 92
- QUIET ROOM- 1
- TEAM ROOM- 3
- IDF-1
- SINK/COFFEE- 1
- PANTRY- 1
- FILE/STORAGE-2
- COPY/PRINT - 2
- PHONE ROOM- 1

**GENERAL NOTE:**

1- BLUE ITEMS ARE ADD ALTERNATE, DOOR ON HOLD  
OPEN AND CLOSET DOORS



DHS/STAR @

**PROGRAM SUMMARY - 10TH FLOOR- TEST FIT**

- TRAINING - 2
- VIDEO CONF - 1
- CONF - 1
- TEAM ROOM-1
- FOCUS ROOM- 1
- PANTRY- 2
- SINK/COFFEE- 2
- COLLARORATION AREA-2
- SIT & STAND DESKS AREA- 2
- STORAGE-2