

FOR SALE AND LEASE ±30,075 SF INDUSTRIAL BUILDING



PROPERTY FEATURES

- ±30,075 SF Industrial Building
- ±63,608 SF Lot Size
- 1st Floor Office: 4,060 SF
- 2nd Floor Office: 3,528 SF
Mezzanine Storage Deck: 732 SF
- 2 Exterior Dock High Doors & 1 Grade Level Door
- 24'-30' Clear Height
- ESFR Sprinkler System (K25)
- Five (5) Restrooms (1st Floor, 2nd Floor, Warehouse)
- M1 Zoning - Light Industrial
- 800 Amps, 277/480 V, 3 Phase
- Large Secured Yard & Truck Court
- 43 Parking Spaces



Shy Assar, MBA
Vice President
direct (909) 545-8091
mobile(949) 981-4494
sassar@voitco.com
Lic. 01964667

John Viscounty
Associate
direct (909) 545-8002
mobile(714) 343-7677
jviscounty@voitco.com
Lic. 02028915

Property Touring Guidelines >

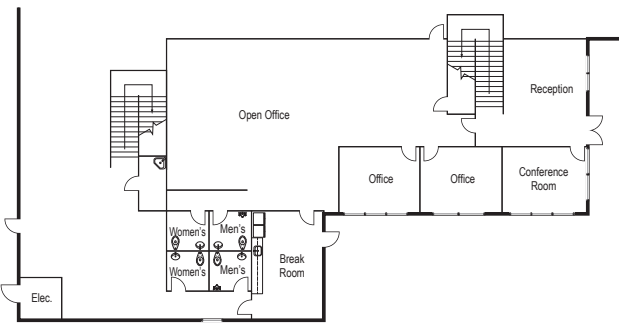
Voit
REAL ESTATE SERVICES

FOR SALE AND LEASE ±30,075 SF INDUSTRIAL BUILDING

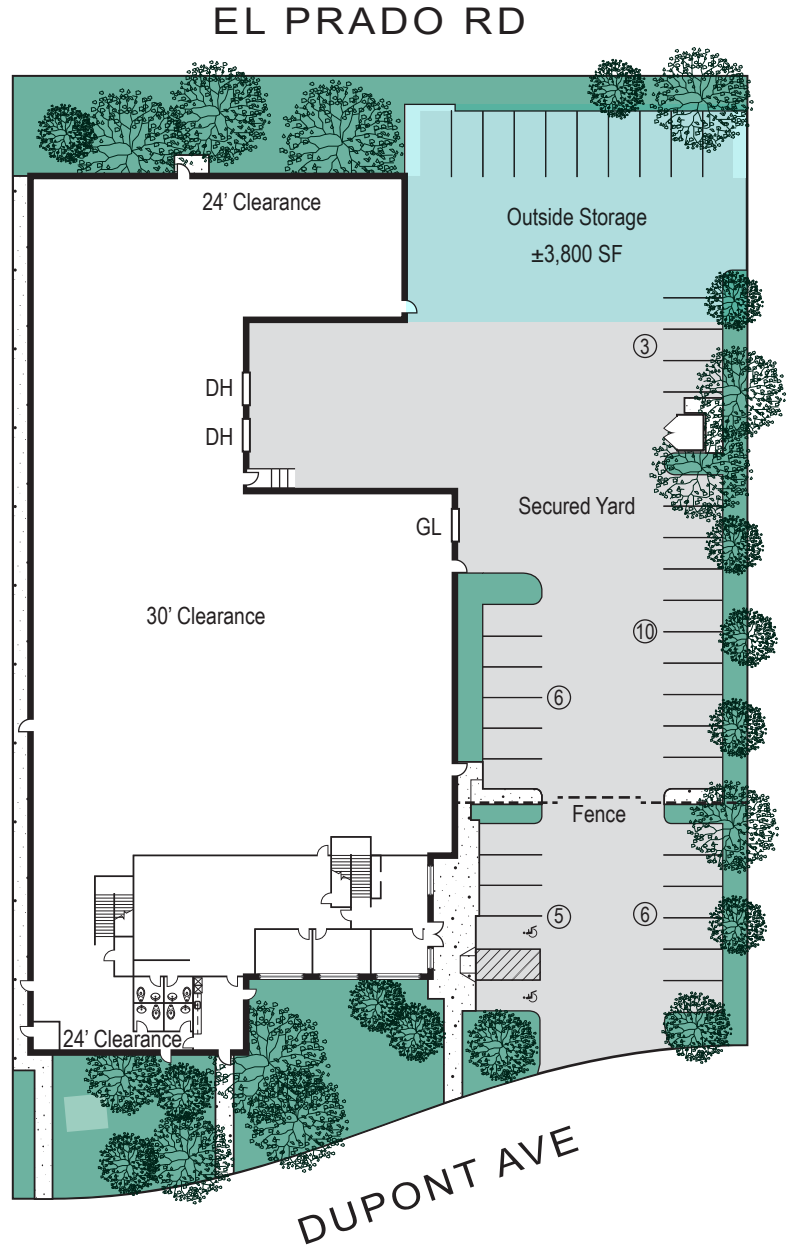
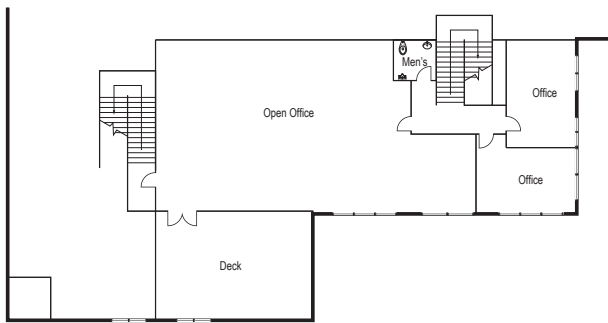
15515 DUPONT AVENUE CHINO, CA



1ST FLOOR OFFICE



2ND FLOOR OFFICE



Shy Assar, MBA
Vice President

direct (909) 545-8091
mobile(949) 981-4494
sassar@voitco.com
Lic. 01964667

John Viscounty
Associate

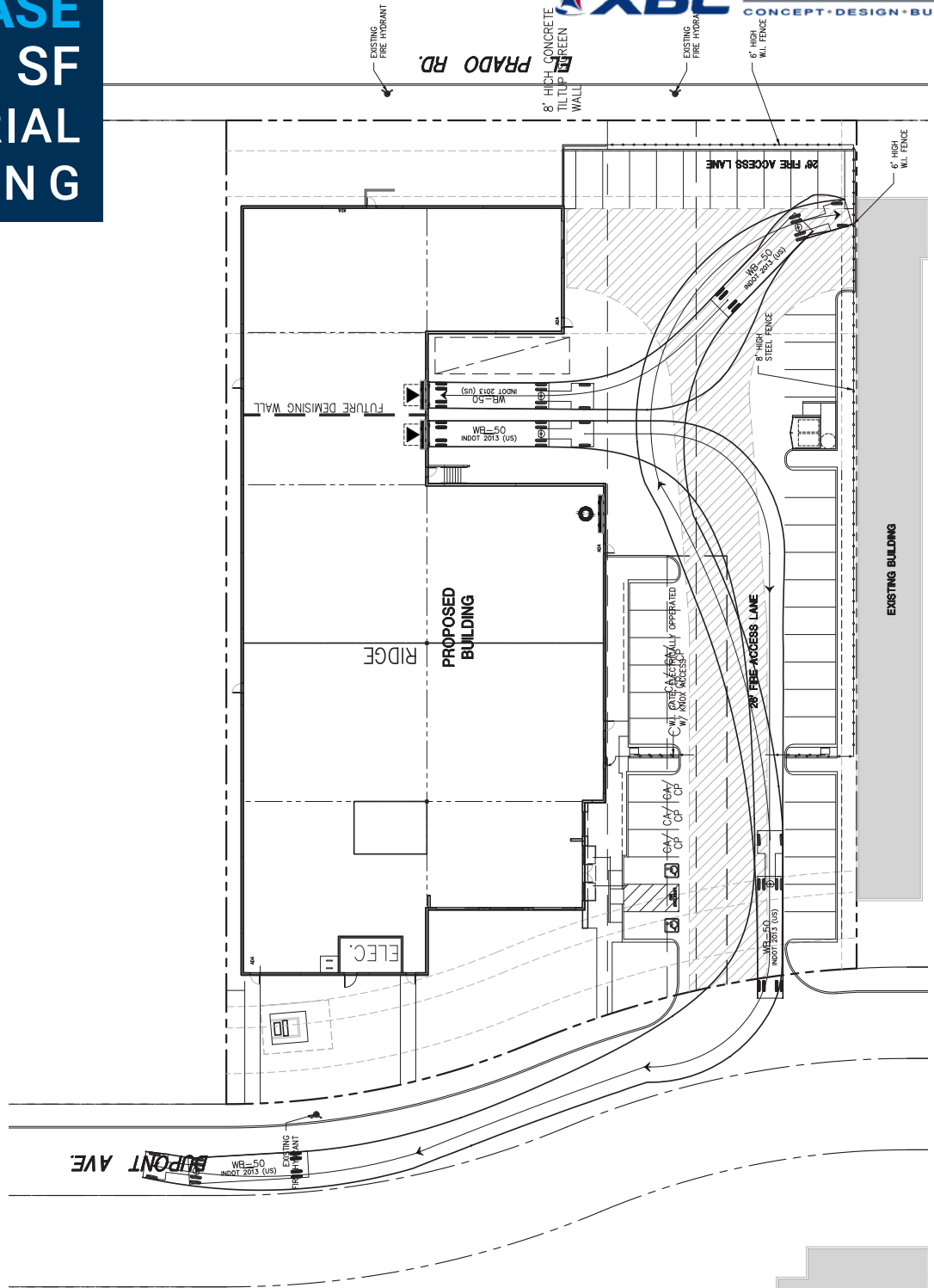
direct (909) 545-8002
mobile(714) 343-7677
jviscounty@voitco.com
Lic. 02028915

Voit

REAL ESTATE SERVICES

**FOR SALE
AND LEASE
±30,075 SF
INDUSTRIAL
BUILDING**

15515 DUPONT AVENUE CHINO, CA



Shy Assar, MBA
Vice President
 direct (909) 545-8091
 mobile(949) 981-4494
 sassar@voitco.com
 Lic. 01964667

John Viscounty
Associate
 direct (909) 545-8002
 mobile(714) 343-7677
 jviscounty@voitco.com
 Lic. 02028915

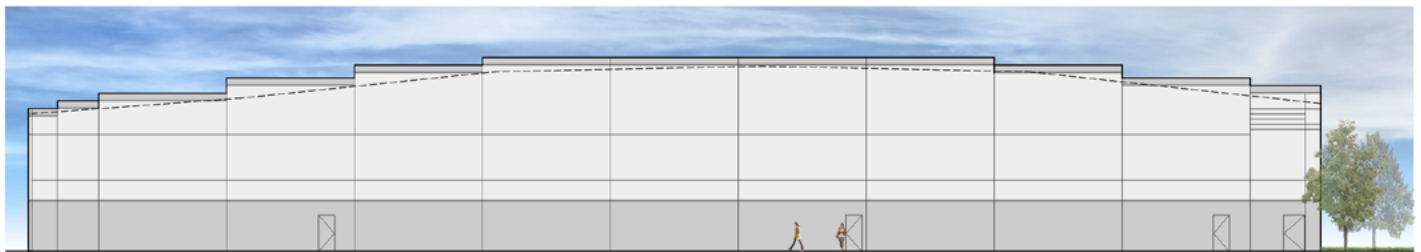
Voit
 REAL ESTATE SERVICES

**FOR SALE
AND LEASE
±30,075 SF
INDUSTRIAL
BUILDING**

15515 DUPONT AVENUE CHINO, CA



EAST ELEVATION | 3/32"=1'-0" | 1 |



NORTH ELEVATION | 3/32"=1'-0" | 2 |



WEST ELEVATION | 3/32"=1'-0" | 3 |



Shy Assar, MBA
Vice President

direct (909) 545-8091
mobile(949) 981-4494
sassar@voitco.com
Lic. 01964667

John Viscounty
Associate

direct (909) 545-8002
mobile(714) 343-7677
jviscounty@voitco.com
Lic. 02028915

Voit

REAL ESTATE SERVICES