

±7,700 SQ. FT OFFICE SPACE FOR LEASE

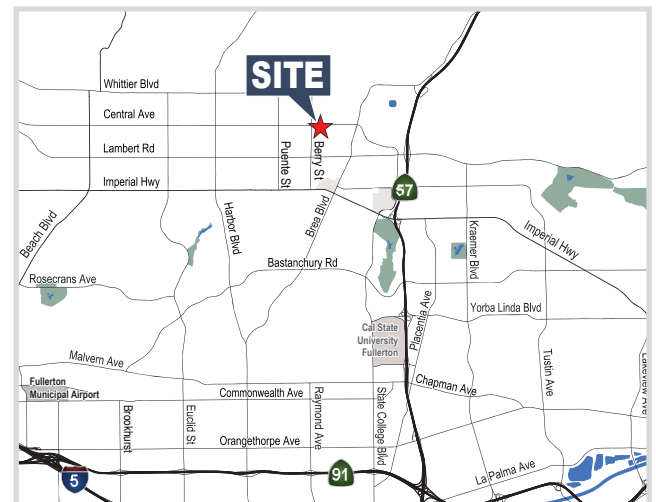
500 W. Central Avenue, Suite A, Brea

Voit
REAL ESTATE SERVICES



PROPERTY FEATURES

- Corporate Image Property
- Monument & Building Signage
- Extensive Glass Line
- Internal Restrooms
- Perimeter Private Offices
- Open Area
- Kitchenette
- Ample Parking
- Professionally Owner & Operated by Deutsche Asset & Wealth Management



STAN KWAK
Senior Vice President
714.935.2327
Lic. #01824776
skwak@voitco.com

BARRY WALSH
Vice President
714.935.2309
Lic. #01213417
bwalshe@voitco.com

SELDEN MCKNIGHT
Associate
714.935.2323
Lic. #02027919
smcknight@voitco.com

Deutsche
Asset Management

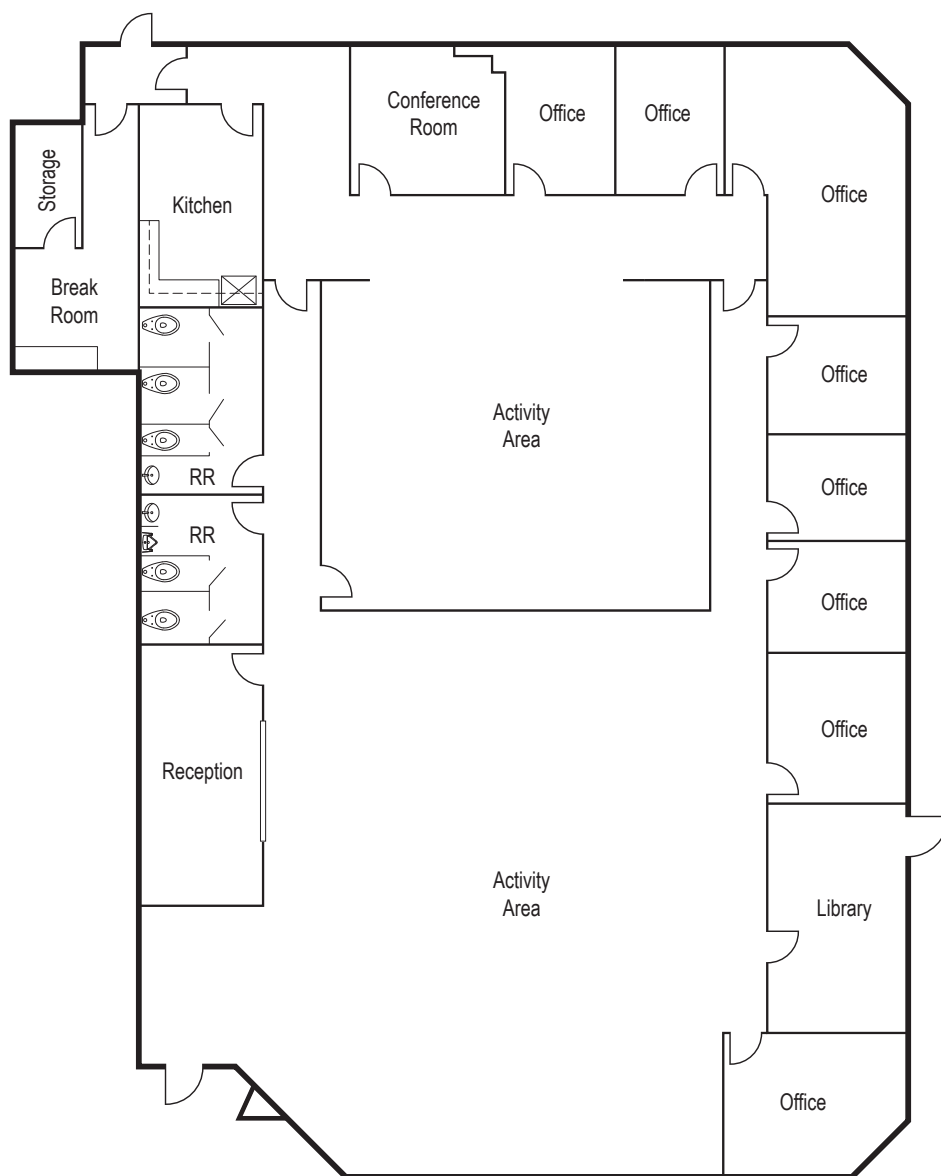


±7,700 SQ. FT OFFICE SPACE FOR LEASE

500 W. Central Avenue, Suite A, Brea

Voit
REAL ESTATE SERVICES

SITE PLAN



STAN KWAK
Senior Vice President
714.935.2327
Lic. #01824776
skwak@voitco.com

BARRY WALSH
Vice President
714.935.2309
Lic. #01213417
bwalshe@voitco.com

SELDEN MCKNIGHT
Associate
714.935.2323
Lic. #02027919
smcknight@voitco.com

Deutsche
Asset Management

