

Sub-Lease

Office: Approximately 9,000 SF

5235 East Hunter Avenue, Anaheim California



Property Details

- Sub-lease term—April 30, 2021 (Longer term available)
- Perimeter private offices
- Open area
- Elevator served
- Ample parking
- Furniture available
- Excellent freeway access
- Immediate occupancy



Voit

REAL ESTATE SERVICES

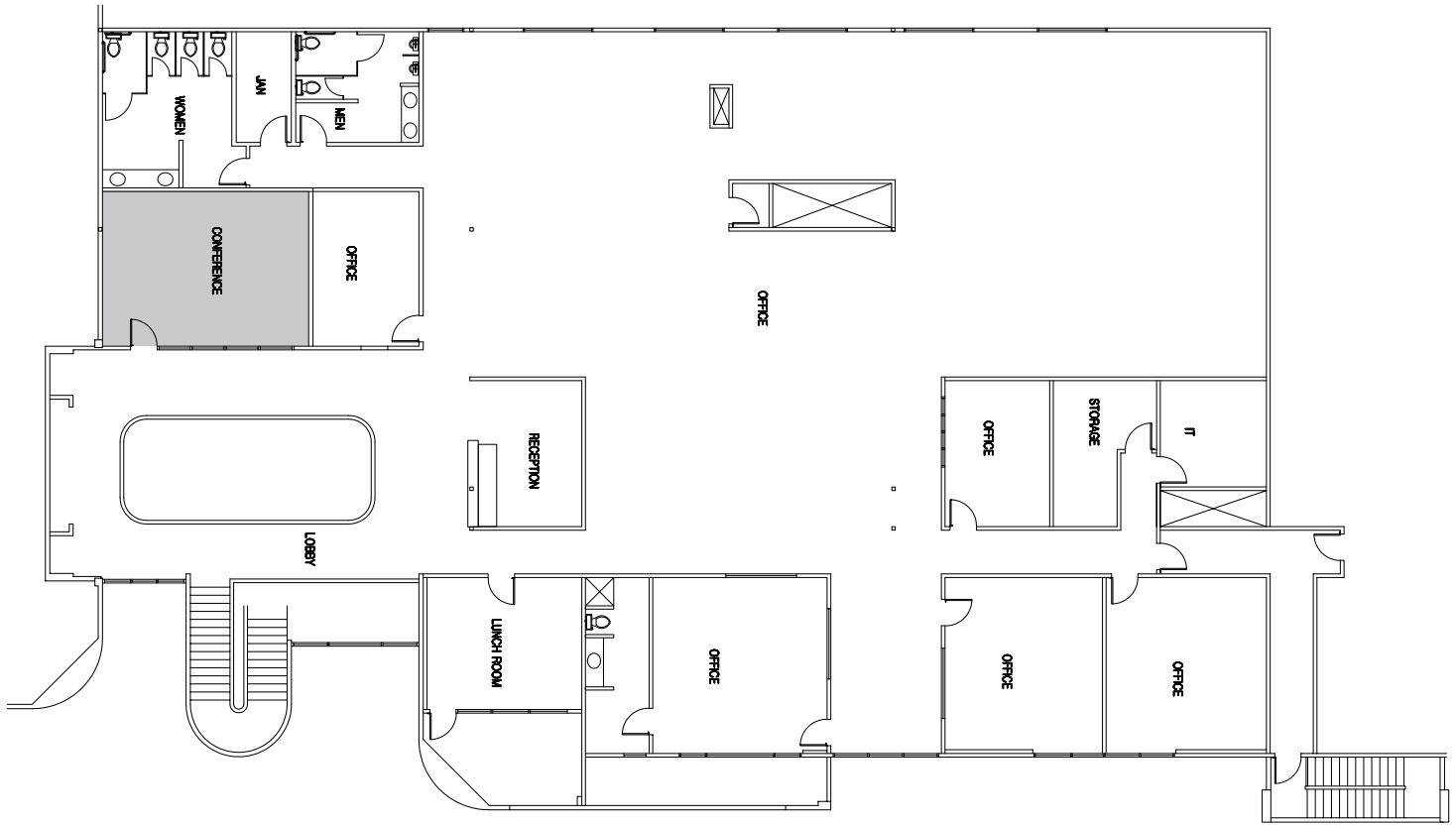
Barry Walshe
Vice President | Partner

(714) 935-2309
(714) 803-8300
bwalshe@voitco.com
#01991785

Sub-Lease

Office: Approximately 9,000 SF

5235 East Hunter Avenue, Anaheim California



Property Details

- Sub-lease term—April 30, 2021 (Longer term available)
- Perimeter private offices
- Open area
- Elevator served
- Ample parking
- Furniture available
- Excellent freeway access
- Immediate occupancy



REAL ESTATE SERVICES

Barry Walshe
Vice President | Partner

(714) 935-2309
(714) 803-8300
bwalshe@voitco.com
#01991785