

# LAKE SIDE CENTER

3720 S. SUSAN STREET  
SANTA ANA, CA 92704



**FOR LEASE**

**3,886 RSF OFFICE SPACE AVAILABLE**

**SHAWN LAWRENCE**  
Managing Director

949.608.2118  
shawn.lawrence@ngkf.com  
CA RE Lic. #01891840

CORPORATE CA RE LIC. #01355491

*The distributor of this communication is performing acts for which a real estate license is required. The information contained herein has been obtained from sources deemed reliable but has not been verified and no guarantee, warranty or representation, either express or implied, is made with respect to such information. Terms of sale or lease and availability are subject to change or withdrawal without notice.*



# LAKE SIDE CENTER

3720 S. SUSAN STREET | SANTA ANA, CA 92704

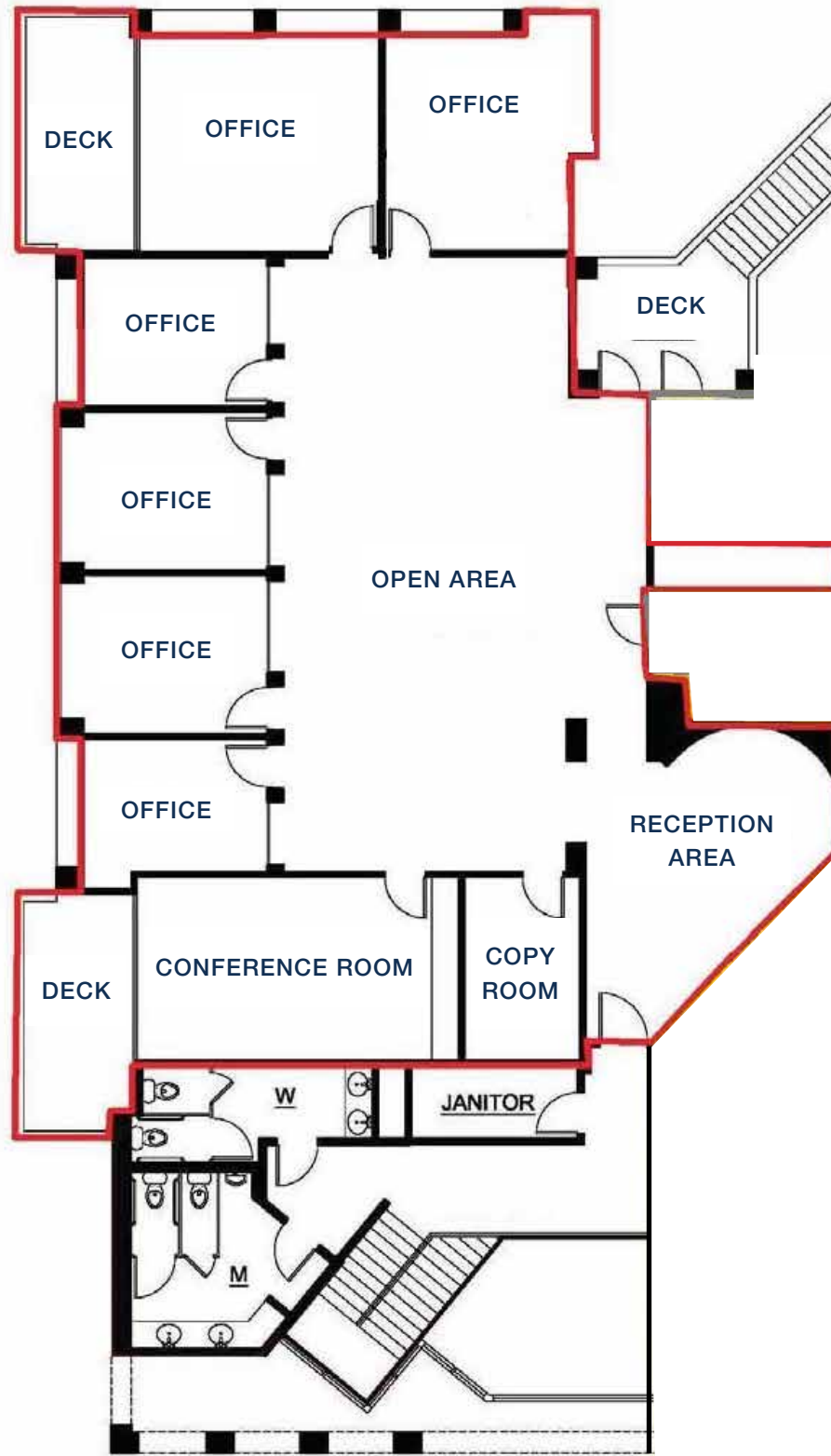


## PROPERTY HIGHLIGHTS

- Suite 200 - 3,886 SF
- Asking \$2.25/SF FSG
- Free surface parking
- Cafe on-site
- Located in the heart of Orange County
- Restaurants, hotels and other amenities nearby
- Less than a mile to SOCO and Metro Pointe
- Great access to 55 and 405 Freeways
- Call to show



**SUITE 200**



**3,886 RSF** AVAILABLE

**\$2.25 FSG** ASKING RATE

**NOW** AVAILABLE