

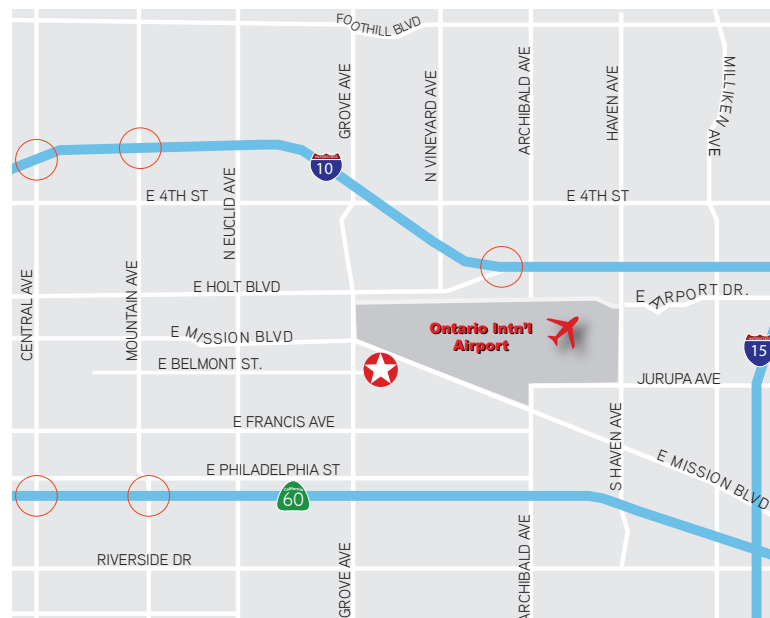
AVAILABLE FOR LEASE | ±23,665 SF



1240 E. BELMONT STREET | ONTARIO, CA

Property Highlights

- › High Image Business Park Environment
- › ±3,472 SF of High End Office Space
- › Built in 2009
- › 24' Minimum Clearance
- › Secured Yard Area
- › 100% Air Conditioned Warehouse with Insulated Walls
- › One (1) 12'x14' Ground Level Door
- › Two (2) Dock High Doors (One w/Pit Load Levelers)
- › 800 Amps, 277/480 Volt Power
- › 63 Parking Stalls
- › Fire Sprinkler System (.60 GPM/3,000 SF)
- › Skylights/Foil/Painted Walls
- › Previous home to JPL (Jet Propulsion Laboratory)



For more information, please contact:

Brad Yates, SIOR
Lic. 01708615
+1 909 937 6315
brad.yates@colliers.com

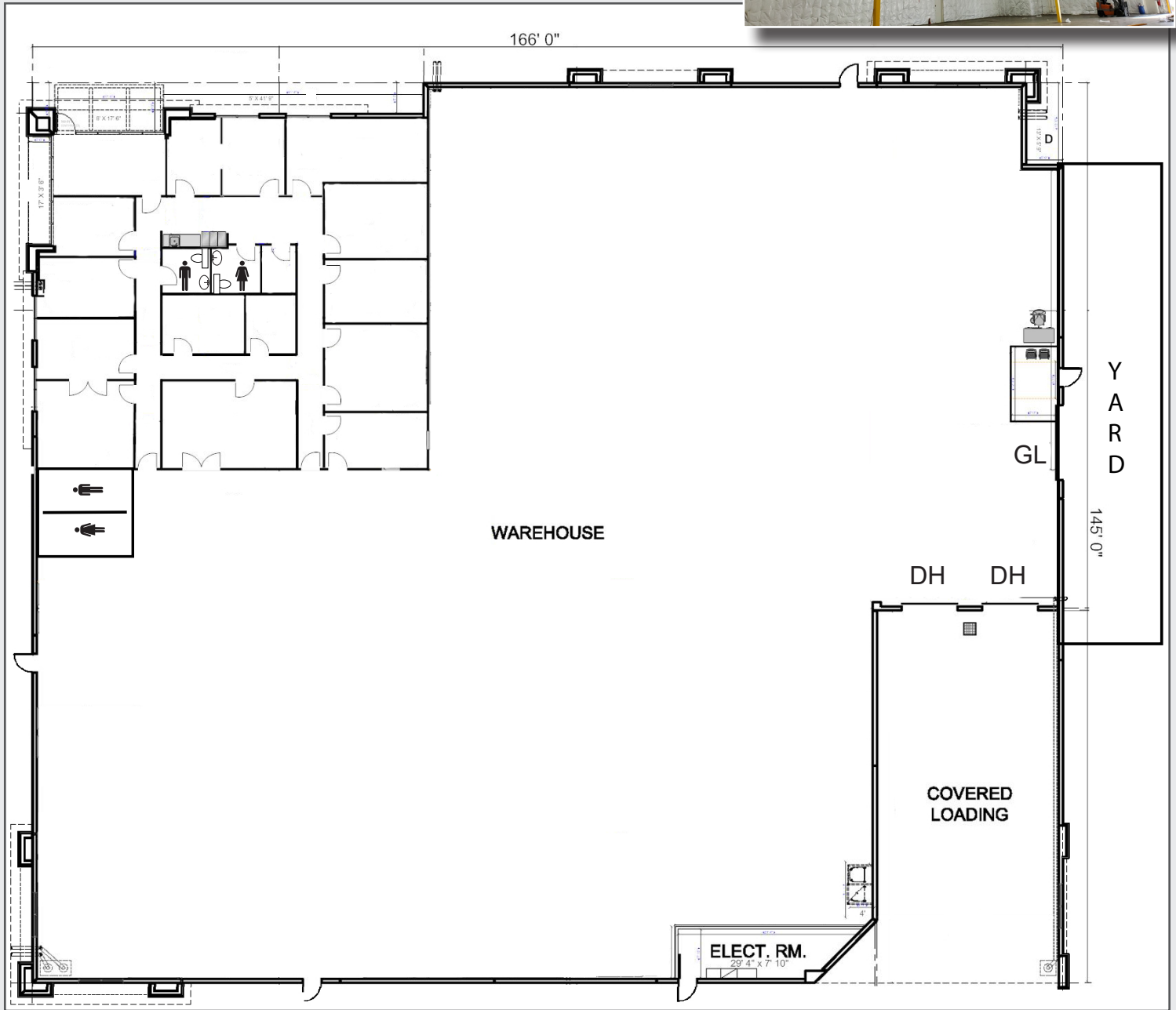
Stefan Pastor
Lic. 01903973
+1 909 937 6341
stefan.pastor@colliers.com

Colliers International
2855 E. Guasti Rd
Suite 401
Ontario, CA 91761



AVAILABLE FOR LEASE | ±23,665 SF

1240 E. Belmont Street | Ontario, CA 91761



For more information, please contact:

Brad Yates, SIOR
Lic. 01708615
+1 909 937 6315
brad.yates@colliers.com

Stefan Pastor
Lic. 01903973
+1 909 937 6341
stefan.pastor@colliers.com

Colliers International
2855 E. Guasti Rd
Suite 401
Ontario, CA 91761

