

FOR LEASE OR SALE

±78,700 SQ. FT.
INDUSTRIAL BUILDING

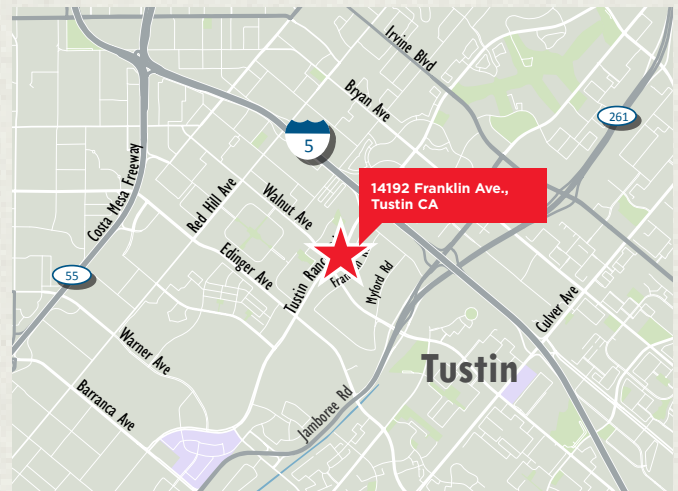
14192

FRANKLIN AVE. / TUSTIN, CA



Property Highlights

- + Office: 16,319 Sq. Ft. of 2 story office with extensive glass line
- + 21' minimum warehouse ceiling clearance
- + 4 dock high loading positions (expandable to 5)
- + 2 ground level loading doors
- + 87 parking spaces (±expandable to 296 parking spaces)
- + 24'x48' column spacing
- + .45 GPM/3,000 Sq. Ft. Sprinkler Calc.
- + 4,000 Amps 277/480 Volt electrical service
- + Secured Yard Area
- + 2 EV charging stations on site
- + 100% HVAC possible (confirm)
- + Includes 3,677 SF Annex building



For more information, please contact:

RICK ELLISON

Executive Managing Director
+1 949 930 9231
rick.ellison@cushwake.com

RANDY ELLISON

Senior Director
+1 949 930 4371
randy.ellison@cushwake.com

KYLE MCGILLEN

Director
+1 949 930 9229
kyle.mcgillem@cushwake.com



18111 Von Karman Avenue, Suite 1000 / Irvine, CA 92612 / cushmanwakefield.com

©2019 Cushman & Wakefield. All rights reserved. The information contained in this communication is strictly confidential. This information has been obtained from sources believed to be reliable but has not been verified. No warranty or representation, express or implied, is made as to the condition of the property (or properties) referenced herein or as to the accuracy or completeness of the information contained herein, and same is submitted subject to errors, omissions, change of price, rental or other conditions, withdrawal without notice, and to any special listing conditions imposed by the property owner(s). Any projections, opinions or estimates are subject to uncertainty and do not signify current or future property performance.

FOR LEASE OR SALE

±78,700 SQ. FT.
INDUSTRIAL BUILDING

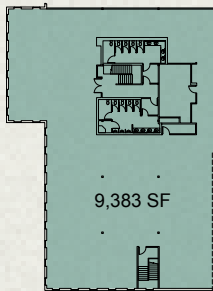
14192

FRANKLIN AVE. / TUSTIN, CA

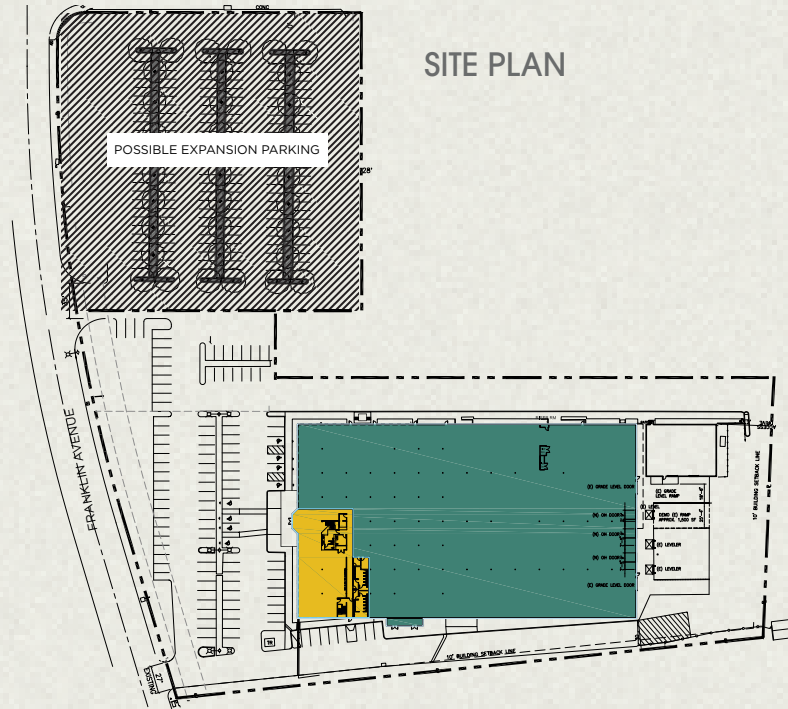
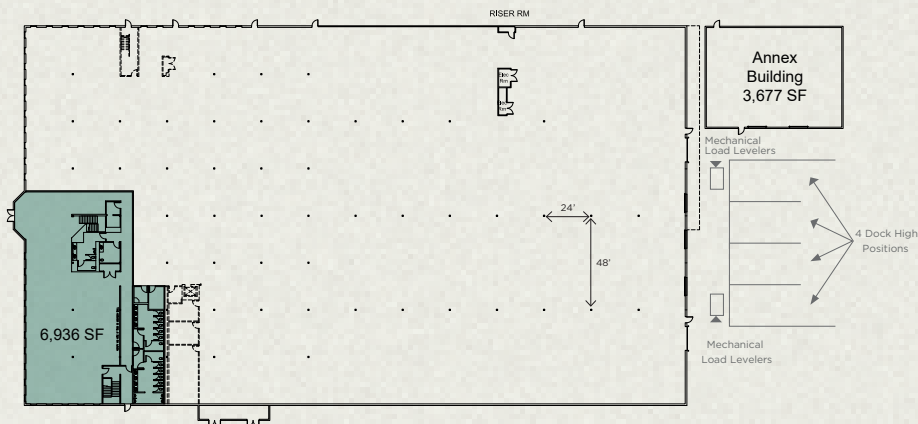
Building Plans

FLOOR PLANS

SECOND FLOOR | 9,383 SF



FIRST FLOOR | 65,640 SF



For more information, please contact:

RICK ELLISON

Executive Managing Director
+1 949 930 9231
rick.ellison@cushwake.com

RANDY ELLISON

Senior Director
+1 949 930 4371
randy.ellison@cushwake.com

KYLE MCGILLEN

Director
+1 949 930 9229
kyle.mcgillem@cushwake.com



18111 Von Karman Avenue, Suite 1000 / Irvine, CA 92612 / cushmanwakefield.com

©2019 Cushman & Wakefield. All rights reserved. The information contained in this communication is strictly confidential. This information has been obtained from sources believed to be reliable but has not been verified. No warranty or representation, express or implied, is made as to the condition of the property (or properties) referenced herein or as to the accuracy or completeness of the information contained herein, and same is submitted subject to errors, omissions, change of price, rental or other conditions, withdrawal without notice, and to any special listing conditions imposed by the property owner(s). Any projections, opinions or estimates are subject to uncertainty and do not signify current or future property performance.