

FOR SUBLEASE | OFFICE SPACE & YARD

11552 Monarch Street, Garden Grove, CA



PROPERTY FEATURES

- ± 4,322 SF 2nd Story Office Space
- Competitive Sublease Rate
- Newly Renovated
- 2 Restrooms
- Kichenette
- Glass Lined Perimeter Offices
- 4:1 Parking Ratio
- Can Combine with 9,800 SF of Secured Fenced Yard
- Signage May Be Available
- Immediate Access to the 22, 405 & 605 Freeways



ERIC SMITH

Vice President
714.935.2310
esmith@voitco.com
Lic. #01940591

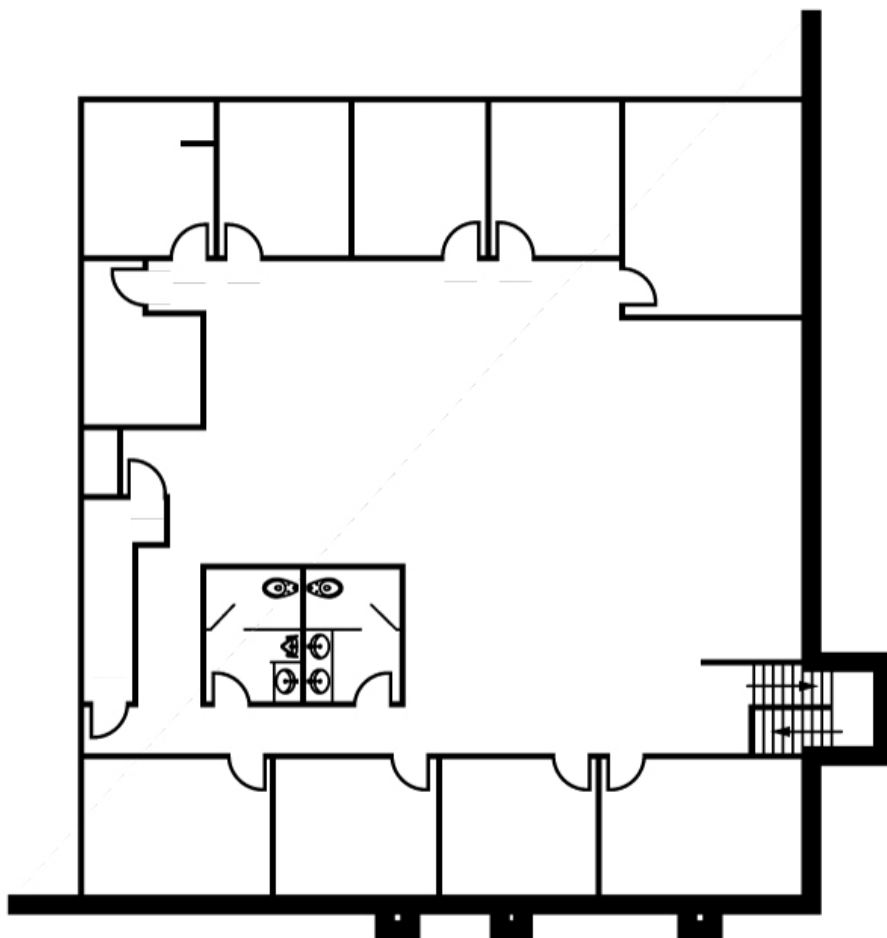
Voit

REAL ESTATE SERVICES

FOR SUBLEASE | OFFICE SPACE & YARD

11552 Monarch Street, Garden Grove, CA

FLOOR PLAN



ERIC SMITH
Vice President
714.935.2310
esmith@voitco.com
Lic. #01940591

Voit
REAL ESTATE SERVICES

2400 E. Katella Ave., Suite 750, Anaheim, CA 92806 • 714.978.7880 • 714.978.9431 Fax • Lic #01991785

www.ericrandolphsmith.com

Licensed as Real Estate Salesperson by the CA Bur of Real Estate. The information contained herein has been obtained from sources we deem reliable. While we have no reason to doubt its accuracy, we do not guarantee it. ©2018 Voit Real Estate Services, Inc. All Rights Reserved. License #01991785.