

±8,000-12,312 SF FREE-STANDING CREATIVE / FLEX BUILDING

1040 West 17th Street, Costa Mesa, CA

AVAILABLE FOR LEASE



FULLY SPRINKLERED / LARGE PRIVATE FENCED YARD

Property Features

- ±12,312 Square Foot Free-Standing Building
- Divisible to ±8,000 SF Office (Modify to Suit)
- Large Private Fenced Yard
- Fully Sprinklered
- 400 AMPS of Power
- Minimum 14' warehouse clearance
- 3.8/1000 Parking Ratio
- Available February 1, 2020
- Great Access to Newport Blvd., 55 Freeway and PCH



MORGAN HILL

Vice President / Partner

949-263-5324

Lic. #01877356

Voit

REAL ESTATE SERVICES

2020 Main Street, Suite 100, Irvine, CA 92614 • 949.851.5100 • 949.261.9092 Fax

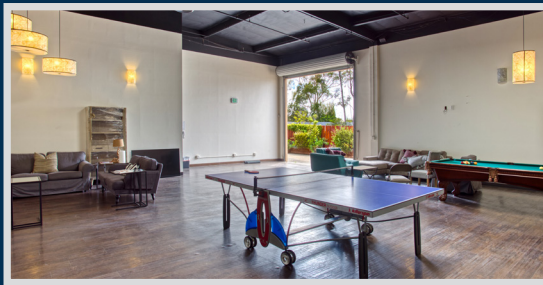
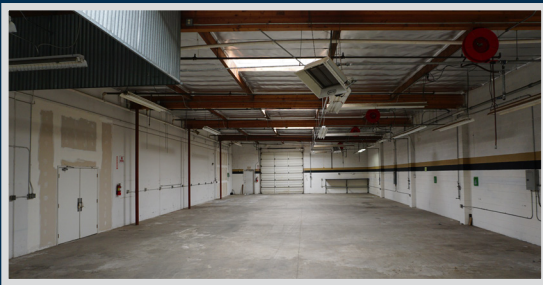
www.VoitCo.com

±8,000-12,312 SF FREE-STANDING CREATIVE / FLEX BUILDING

1040 West 17th Street, Costa Mesa, CA

AVAILABLE FOR LEASE

FLOOR PLAN



MORGAN HILL

Vice President / Partner

949-263-5324

Lic. #01877356

2020 Main Street, Suite 100, Irvine, CA 92614 • 949.851.5100 • 949.261.9092 Fax

Licensed as Real Estate Salespersons by the DRE. The information contained herein has been obtained from sources we deem reliable. While we have no reason to doubt its accuracy, we do not guarantee it. ©2019 Voit Real Estate Services, Inc. All Rights Reserved. License #01991785.

Voit

REAL ESTATE SERVICES

www.VoitCo.com