

HANCOCK MEDICAL CENTER 3,274 SF FULLY IMPROVED MEDICAL SUITE AVAILABLE FOR LEASE

25150 Hancock Ave, Suite 105 | Murrieta, CA



LEE & ASSOCIATES
COMMERCIAL REAL ESTATE SERVICES

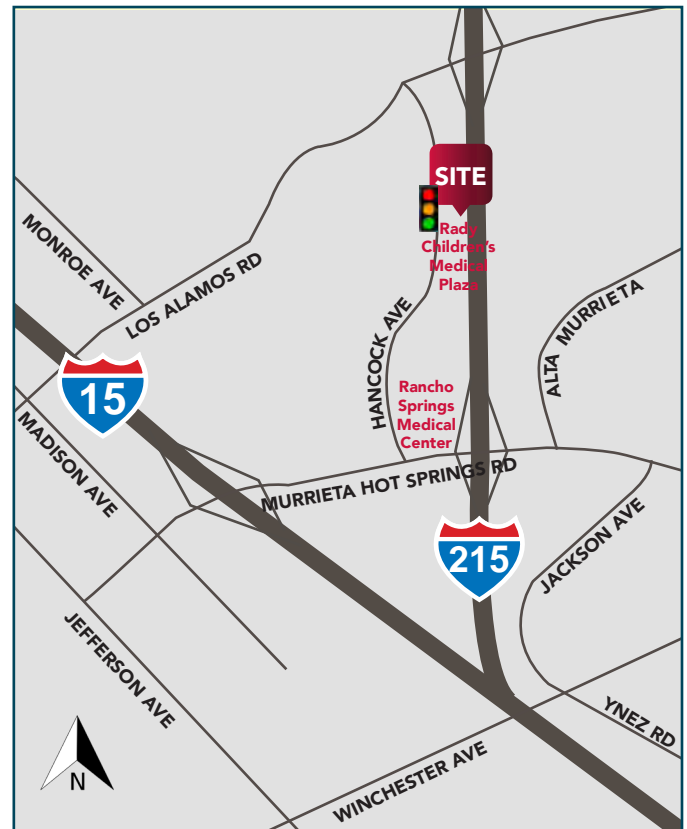


FEATURES:

- Class 'A' Medical Office Building
- Building signage facing 215 freeway
- Monument signage along Hancock Avenue displaying tenants name
- Signalized corner next to Rady's Children's Medical Office Building
- Freeway visible, along I-215 freeway between Murrieta Hot Springs Road and Los Alamos. Easy access to I-15 Fwy
- Available February 1, 2020
- Please do not disturb Tenant, contact Agent to show

LEASE RATE STARTING AT: \$2.40 SF NNN

(NNN estimated at \$0.77/SF)



Sheri Shoemaker
951.445.4510
sshoeemaker@leetemecula.com
DRE #00846946

Mary Piper
951.445.4516
mpiper@leetemecula.com
DRE #01268829

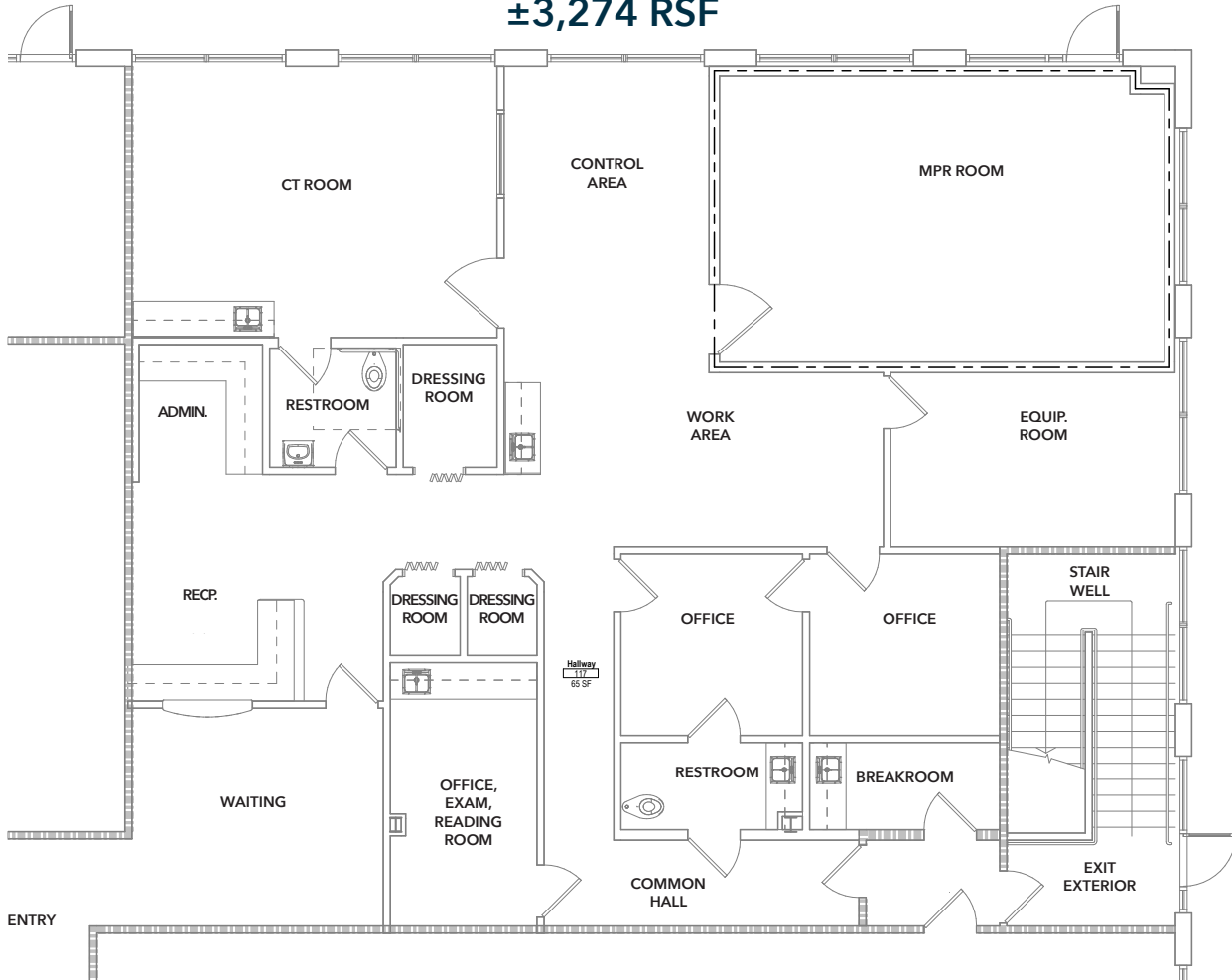
No warranty or representation has been made to the accuracy of the foregoing information. Terms of sale or lease and availability are subject to change or withdrawal without notice. Lee & Associates Commercial Real Estate Services, Inc. - Riverside. 25240 Hancock Avenue, Suite 100 - Murrieta, CA 92562 Corporate ID# 01048055

HANCOCK MEDICAL CENTER 3,274 SF FULLY IMPROVED MEDICAL SUITE AVAILABLE FOR LEASE

25150 Hancock Ave, Suite 105 | Murrieta, CA



SUITE 105 ±3,274 RSF



REV 8/20/19



HANCOCK MEDICAL CENTER 3,274 SF FULLY IMPROVED MEDICAL SUITE AVAILABLE FOR LEASE

25150 Hancock Ave, Suite 105 | Murrieta, CA



**LEE &
ASSOCIATES**
COMMERCIAL REAL ESTATE SERVICES



Sheri Shoemaker
951.445.4510
sshoemaker@leetemecula.com
DRE #00846946

Mary Piper
951.445.4516
mpiper@leetemecula.com
DRE #01268829

No warranty or representation has been made to the accuracy of the foregoing information. Terms of sale or lease and availability are subject to change or withdrawal without notice. Lee & Associates Commercial Real Estate Services, Inc. - Riverside. 25240 Hancock Avenue, Suite 100 - Murrieta, CA 92562 Corporate ID# 01048055

HANCOCK MEDICAL CENTER 3,274 SF FULLY IMPROVED MEDICAL SUITE AVAILABLE FOR LEASE

25150 Hancock Ave, Suite 105 | Murrieta, CA



LEE & ASSOCIATES
COMMERCIAL REAL ESTATE SERVICES



No warranty or representation has been made to the accuracy of the foregoing information. Terms of sale or lease and availability are subject to change or withdrawal without notice. Lee & Associates Commercial Real Estate Services, Inc. - Riverside. 25240 Hancock Avenue, Suite 100 - Murrieta, CA 92562. Corporate ID# 01048055